

# January 2018 – SeaDataCloud catalogues follow-up

All documents used to write this report are available on the extranet of the project under [SeaDataCloud > Follow up](#).

## Statistics on all catalogues

In January 2018, global increases on catalogues :

- **CDI (Data)** : **+7 485,**
- **CSR (Cruises)** : **+221,**
- **EDMO (Marine organisations)** : **+7,**
- **EDMERP (Projects)** : **+6,**
- **EDMED (Data sets)** : **+5**

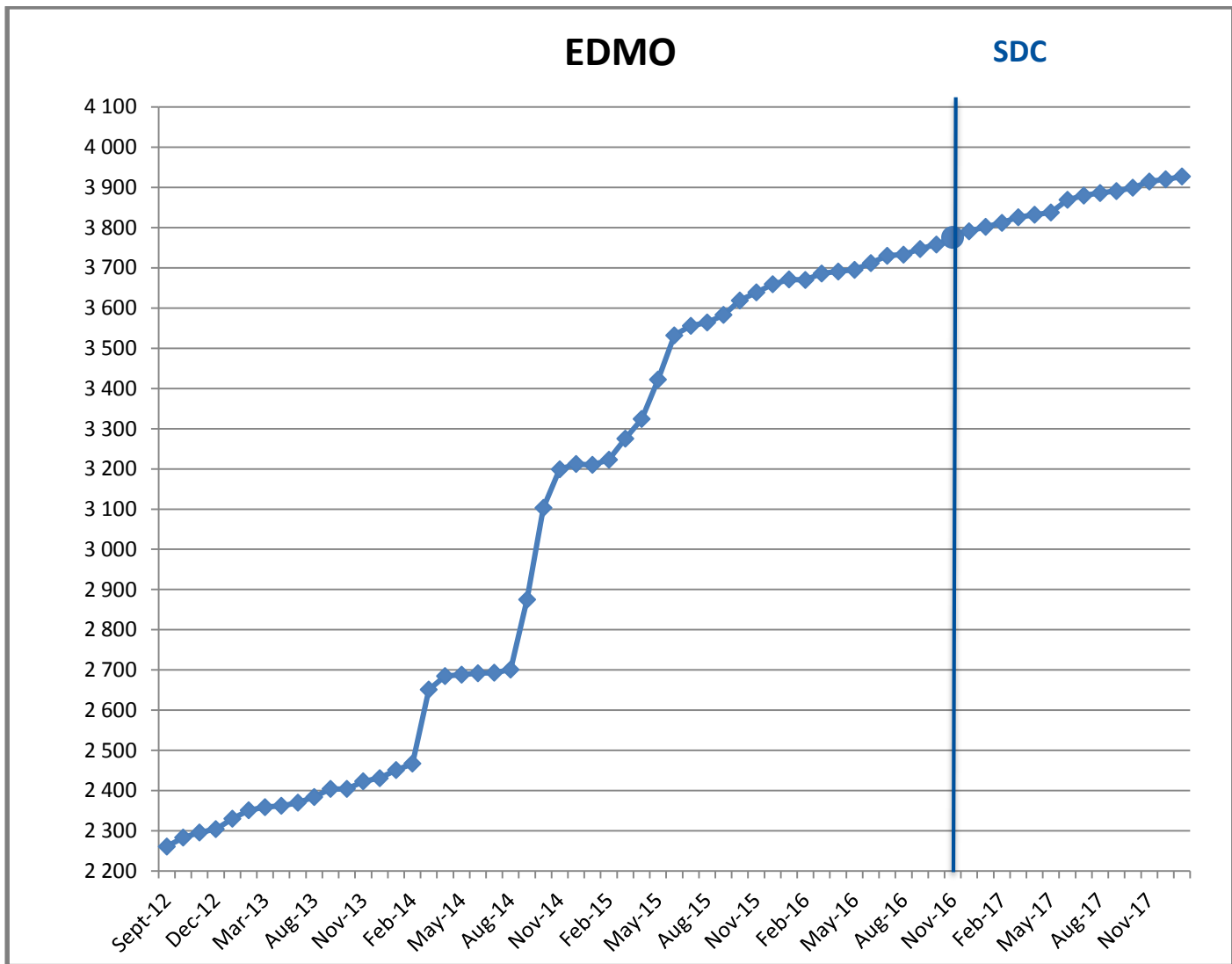
and no change for **EDIOS-PRG (Programmes)**.

## Since the beginning of SeaDataCloud :

Catalogue	Jan-17	Dec-17	Nov-17	Oct-17	Sep-17	Aug-17	Jul-17	Jun-17	May-17	Apr-17	Mars-17	Beginning	Increase (*)
EDMO	3 927	3 920	3 915	3 899	3 891	3 886	3 880	3 869	3 838	3 832	3 826	3 758	169
EDMED	4 154	4 149	4 142	4 135	4 131	4 108	4 101	4 101	4 099	4 096	4 084	4 077	77
EDMERP	3 042	3 036	3 026	3 020	3 018	3 016	3 000	2 993	2 992	2 990	2 990	2 975	67
EDIOS-PRG	362	362	362	362	362	362	362	362	362	362	362	362	0
CSR	47 905	47 684	47 558	47 455	47 301	46 893	46 756	46 723	46 724	46 681	46 480	45 990	1 915
CDI	2 101 090	2 093 605	2 081 618	2 063 832	2 000 402	1 980 818	1 977 738	1 974 509	1 971 285	1 968 060	1 955 483	1 873 823	227 267

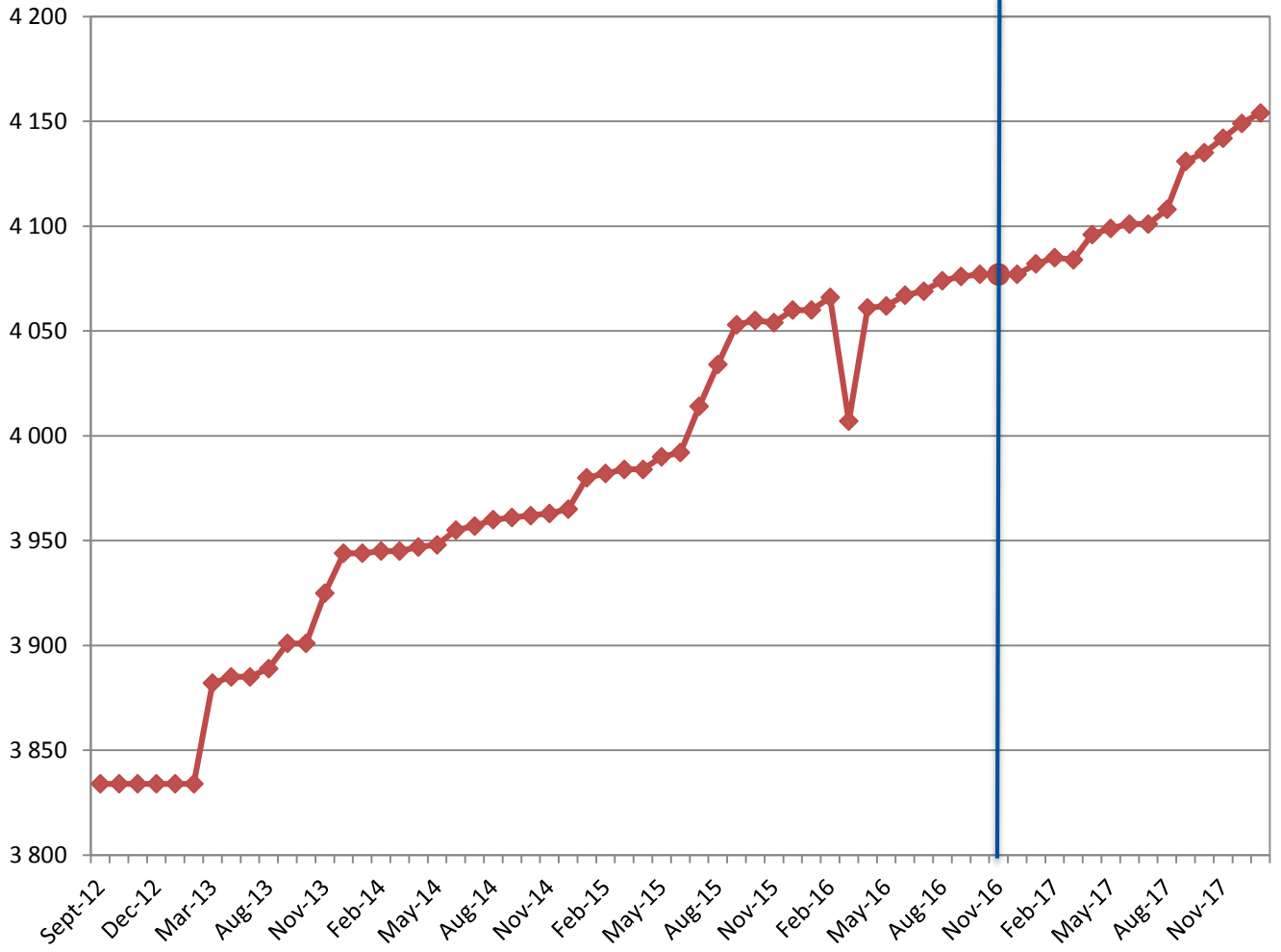
(\*) Increase since beginning of SeaDataCloud (01/11/2016)

Nb of EDMO, EDMED, EDMERP, EDIOS, CSR and CDI per month



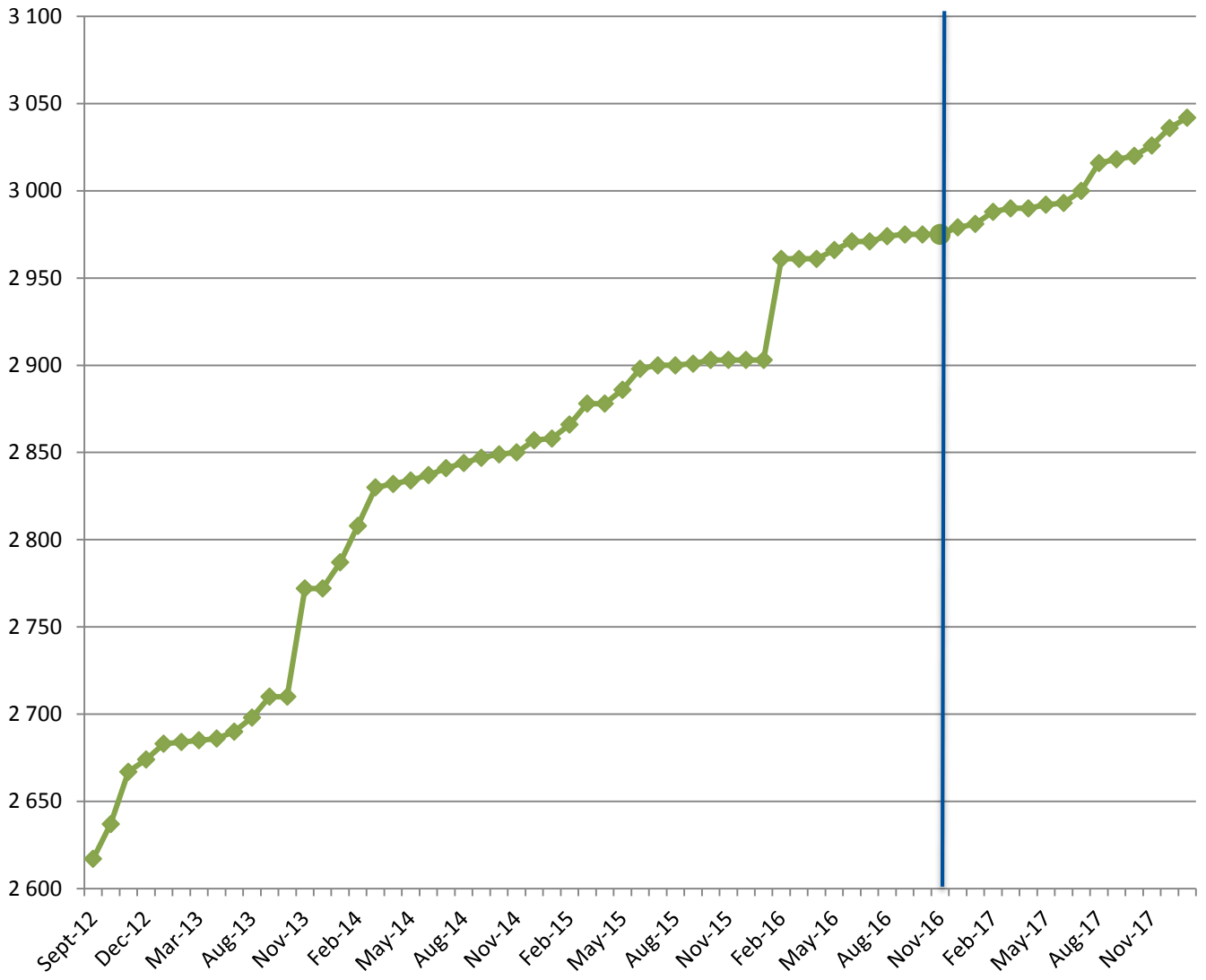
EDMED

SDC



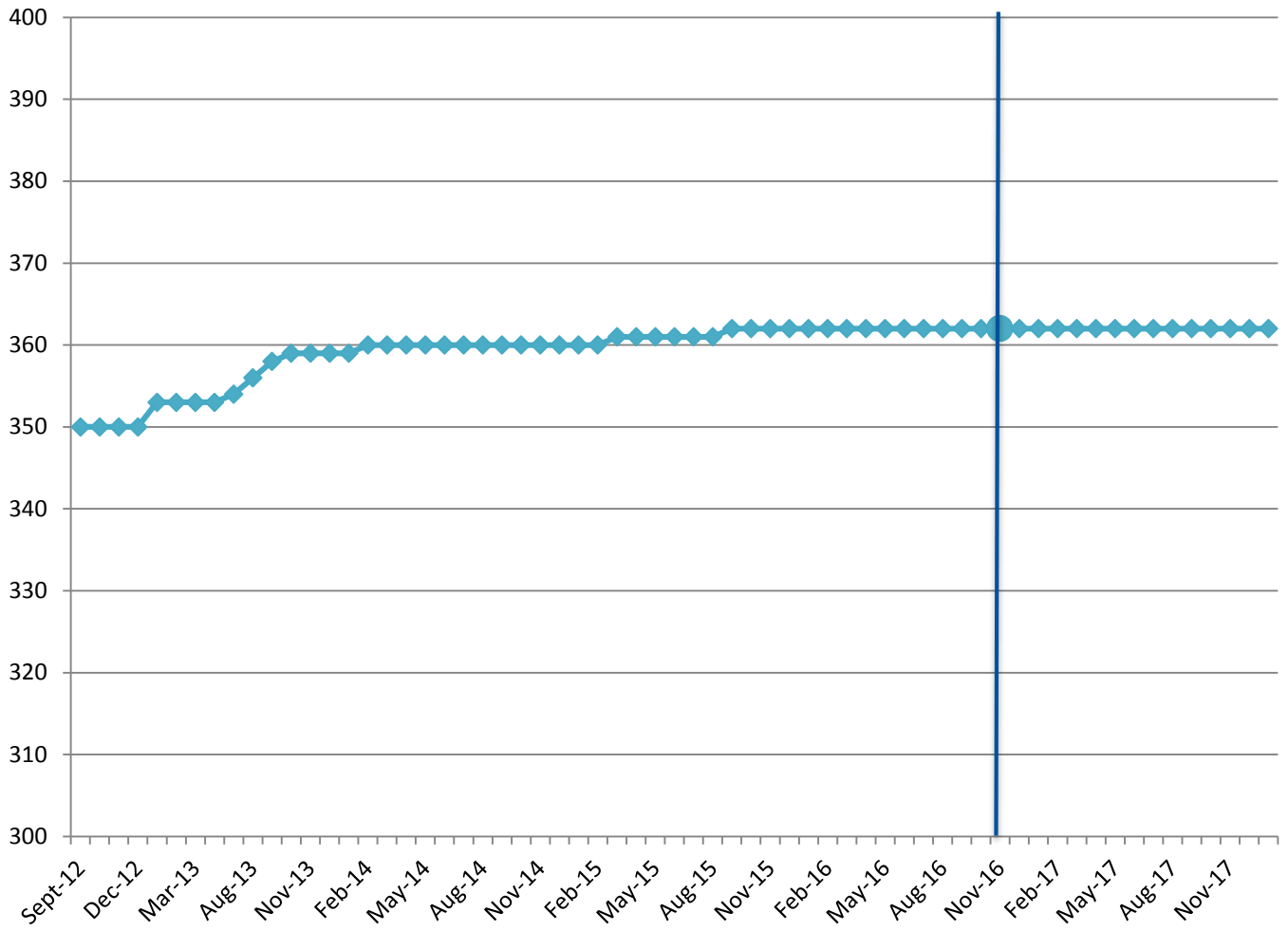
# EDMERP

SDC



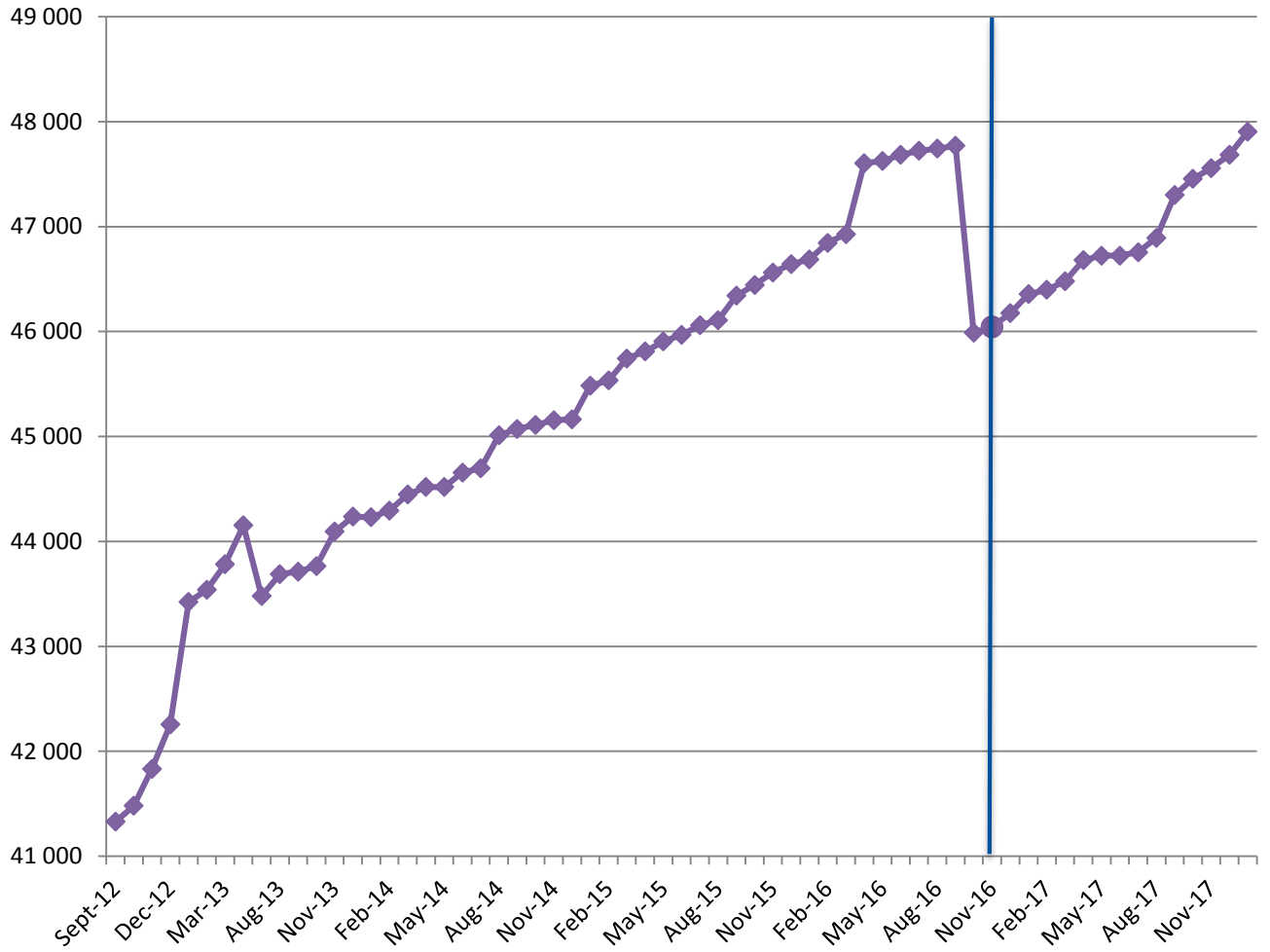
# EDIOS-PRG

SDC



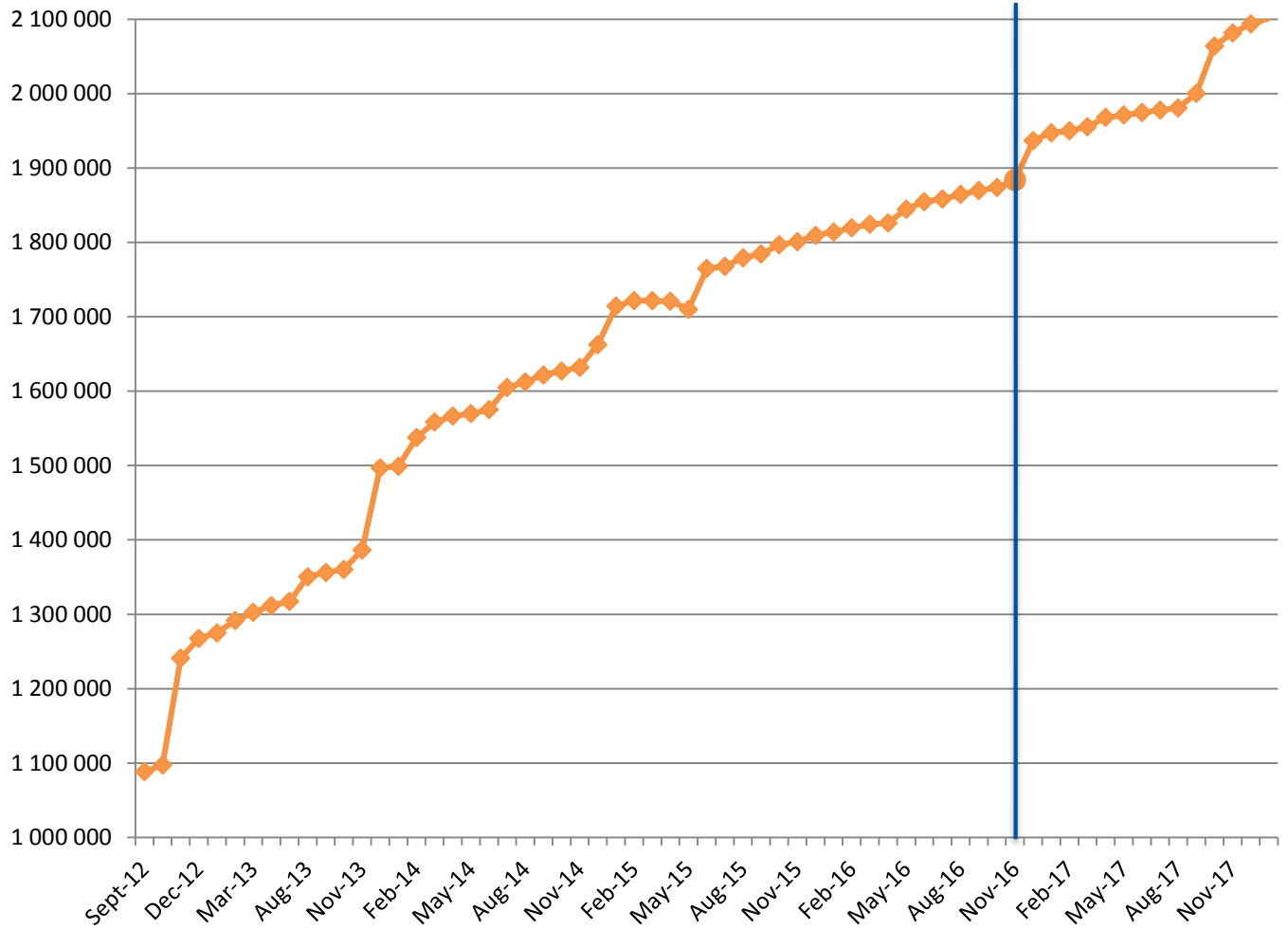
CSR

SDC



CDI

SDC



## Statistics on CDI catalogue

Details of last month upgrades per partners are the following:

CDI partner	Country	Last increase
CSIC	Spain	-2
IEO	Spain	3 111
IFREMER	France	3 856
IHPT	Portugal	69
IO-BAS	Bulgaria	138
NIB	Slovenia	72
NIMRD	Romania	168
NIOZ	Netherlands	33
RIHMI-WDC	Russian Federation	10
TSU-DNA	Georgia	12
<b>TOTAL</b>		<b>7 467</b>

- 10 SeaDataCloud partners have input data in the CDI catalogue, for a total increase of **+7 467 records**.
- 5 other partners, not in the SeaDataCloud consortium, have worked for a increase of **+18 records**, including a new partner which belongs to EMODnet High Resolution Seabed Mapping project :
  - Geodetic Institute of Slovenia, EDMO 4666, Slovenia



Since the beginning of the follow-up reports (October 2012), the increase in CDI since start SDC (November 2016), between end SDN2 (September 2015) and start SDC, increase since SDN2, per partner, is the following: Note that for SMHI and SIO-RAS the negative increase since start SDN2 is due to the change in their time series management (SMHI), the change of data owner and the remove of incorrect records (SIO-RAS). The new owner is SOI, not in the SeaDataCloud consortium).

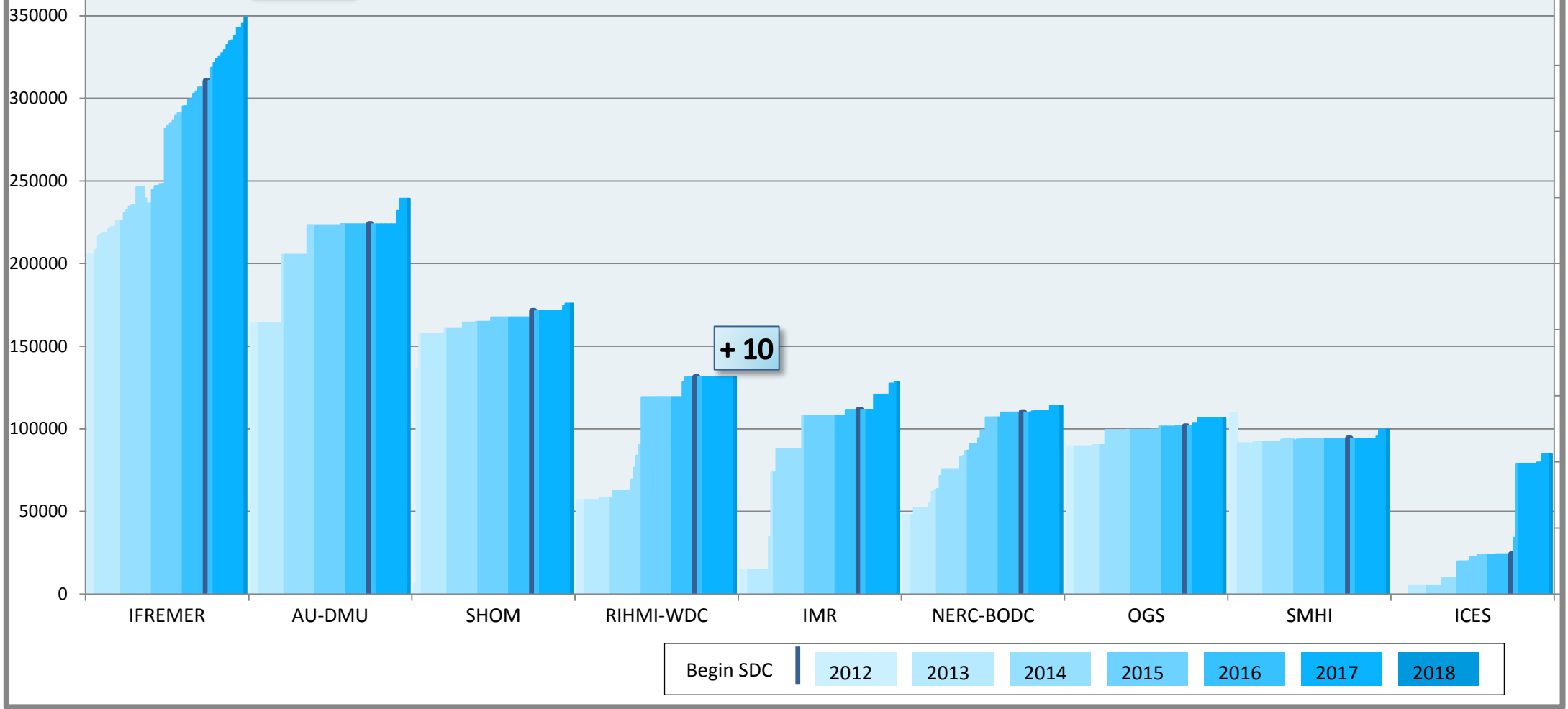
CDI partner	Name of partner	Country	Nb 02/02/2018	Increase since start SDC	Increase between SDN2 and SDC	Increase since start SDN2
<b>CNRS</b>	French National Center for Scientific Research	France	0	0	0	-
<b>GEOMAR</b>	Helmholtz Centre for Ocean Research Kiel	Germany	0	0	0	-
<b>IOPAN</b>	IOPAN	Poland	18	0	0	18
<b>ORION/OC-UCY</b>	Cyprus Oceanography Center	Cyprus	3 520	0	19	1 965
<b>IMGW</b>	Instytut Meteorologii i Gosodarki Wodnej	Poland	13 110	0	1 770	13 110
<b>INSTM</b>	Institut National des Sciences et Technologies de la Mer	Tunisia	952	-17	0	952
<b>CSIC</b>	Consejo Superior de Investigaciones Cientificas	Spain	4	-1	1	4
<b>IOLR</b>	Israel Oceanographic and Limnological Research (IOLR)	Israel	5 734	2	333	661
<b>SIO-RAS</b>	P.P.Shirshov Institute of Oceanology-RAS	Russian Federation	10 471	30	482	-28 352
<b>NIOZ</b>	NIOZ Royal Netherlands Institute for Sea Research	Netherlands	6 190	60	46	1 561
<b>TSU-DNA</b>	Iv.Javakhishvili Tbilisi State University	Georgia	1 017	65	34	122
<b>IOF</b>	Institute of Oceanography and Fisheries	Croatia	2 320	87	490	744
<b>IHPT</b>	IHPT, Hydrographic institute	Portugal	6 422	89	1 713	5 517
<b>UOM</b>	University Of Malta	Malta	1 121	96	393	493
<b>VLIZ</b>	Flanders Marine Institute	Belgium	3 683	111	74	2 064
<b>IMBK</b>	Institute of Marine Biology (IMBK)	Montenegro	887	181	647	865
<b>ENEA</b>	ENEA Centro Ricerche Ambiente Marino - La Spezia	Italy	9 279	190	284	1 205
<b>CNR</b>	CNR - Institute of Atmospheric Sciences and Climate (ISAC) (Rome)	Italy	552	299	0	552
<b>NIB</b>	National Institute of Biology - NIBMarine Biology Station	Slovenia	8 087	425	287	3 967
<b>RIHMI-WDC</b>	All-Russia Research Institute of Hydrometeorological Information - World Data Centre	Russian Federation	131 767	435	12 003	74 642
<b>IO-BAS</b>	Bulgarian National Oceanographic Data Centre(BGODC)	Bulgaria	3 948	469	273	1 640
<b>UkrSCES</b>	Ukrainian scientific center of Ecology of Sea (UkrSCES)	Ukraine	6 114	470	267	6 114
<b>METU-IMS</b>	Institute of Marine Sciences, Middle East Technical University	Turkey	28 513	496	2 222	25 431
<b>LHEI</b>	Latvian Institute of Aquatic Ecology	Latvia	4 047	563	536	3 740
<b>BSH-DOD</b>	German Oceanographic Datacentre (NODC)	Germany	40 195	748	465	22 917
<b>MSI</b>	Marine Systems Institute at Tallinn University of Technology	Estonia	27 374	900	-3	14 377

<b>RBINS</b>	Royal Belgian Institute of Natural Sciences	Belgium	13 596	1 267	0	2 063
<b>HCMR</b>	Hellenic Centre for Marine Research	Greece	17 348	1 359	260	5 324
<b>NIMRD</b>	National Institute for Marine Research and Development Grigore Antipa	Romania	8 256	1 366	602	4 002
<b>MRI</b>	Marine Research Institute (MRI)	Iceland	7 911	1 997	0	4 087
<b>NERC-BODC</b>	British Oceanographic Data Centre	United Kingdom	114 147	4 144	2 973	66 090
<b>SHOM</b>	Shom	France	175 957	4 623	3 754	169 534
<b>OGS</b>	OGS (Istituto Nazionale di Oceanografia e di Geofisica Sperimentale)	Italy	106 488	4 941	1 922	16 890
<b>SYKE</b>	Finnish Environment Institute	Finland	11 535	5 328	5 162	11 535
<b>SMHI</b>	Swedish Meteorological and Hydrological Institute	Sweden	99 691	5 405	0	-9 836
<b>IEO</b>	IEO/Spanish Oceanographic Institute	Spain	47 119	6 763	4 265	15 704
<b>MI</b>	Marine Institute	Ireland	18 356	10 107	0	13 655
<b>AU-DMU</b>	Aarhus University	Denmark	239 319	15 364	609	75 165
<b>IMR</b>	Institute of Marine Research - Norwegian Marine Data Centre (NMD)	Norway	128 587	16 950	3 808	113 794
<b>FMI</b>	Finnish Meteorological Institute	Finland	30 682	17 182	0	28 471
<b>IFREMER</b>	IFREMER / IDM/SISMER	France	349 252	38 495	24 240	143 053
<b>ICES</b>	International Council for the Exploration of the Sea (ICES)	Denmark	84 722	60 551	369	84 722
		<b>TOTAL</b>	<b>1 768 291</b>	<b>201 540</b>	<b>70 300</b>	<b>898 562</b>

## Partners with more than 50 000 CDIs

+ 3 856

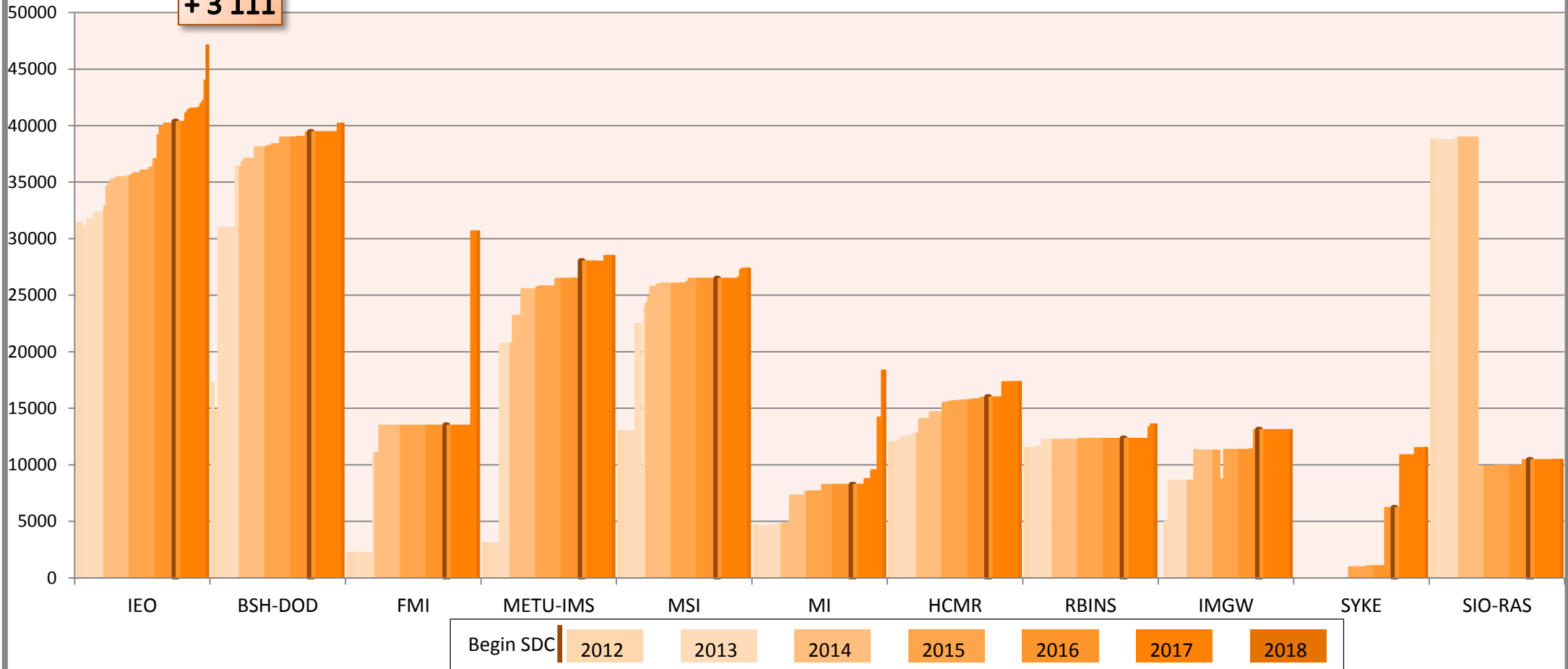
+ 10



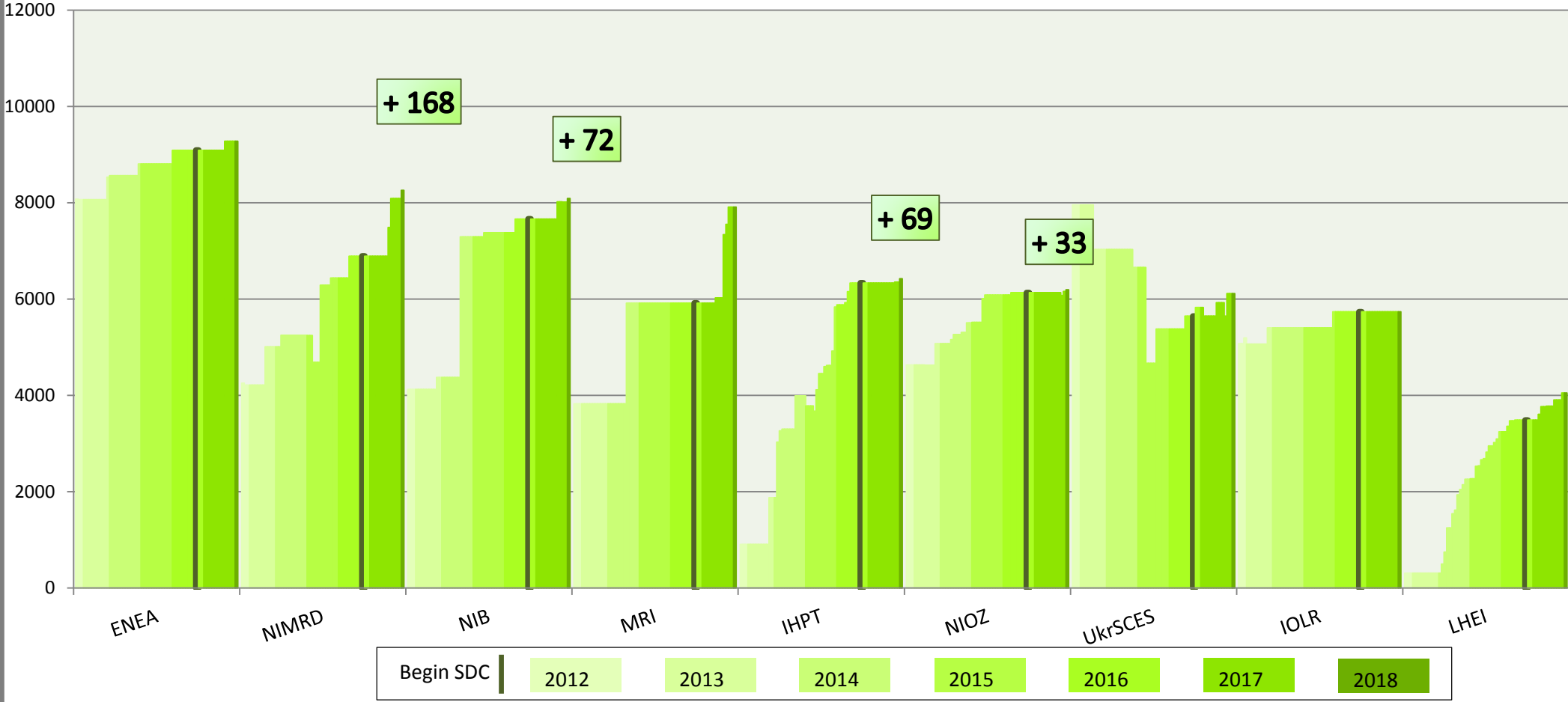
Begin SDC | 2012 | 2013 | 2014 | 2015 | 2016 | 2017 | 2018

## Partners with 10 000 < CDIs < 50 000

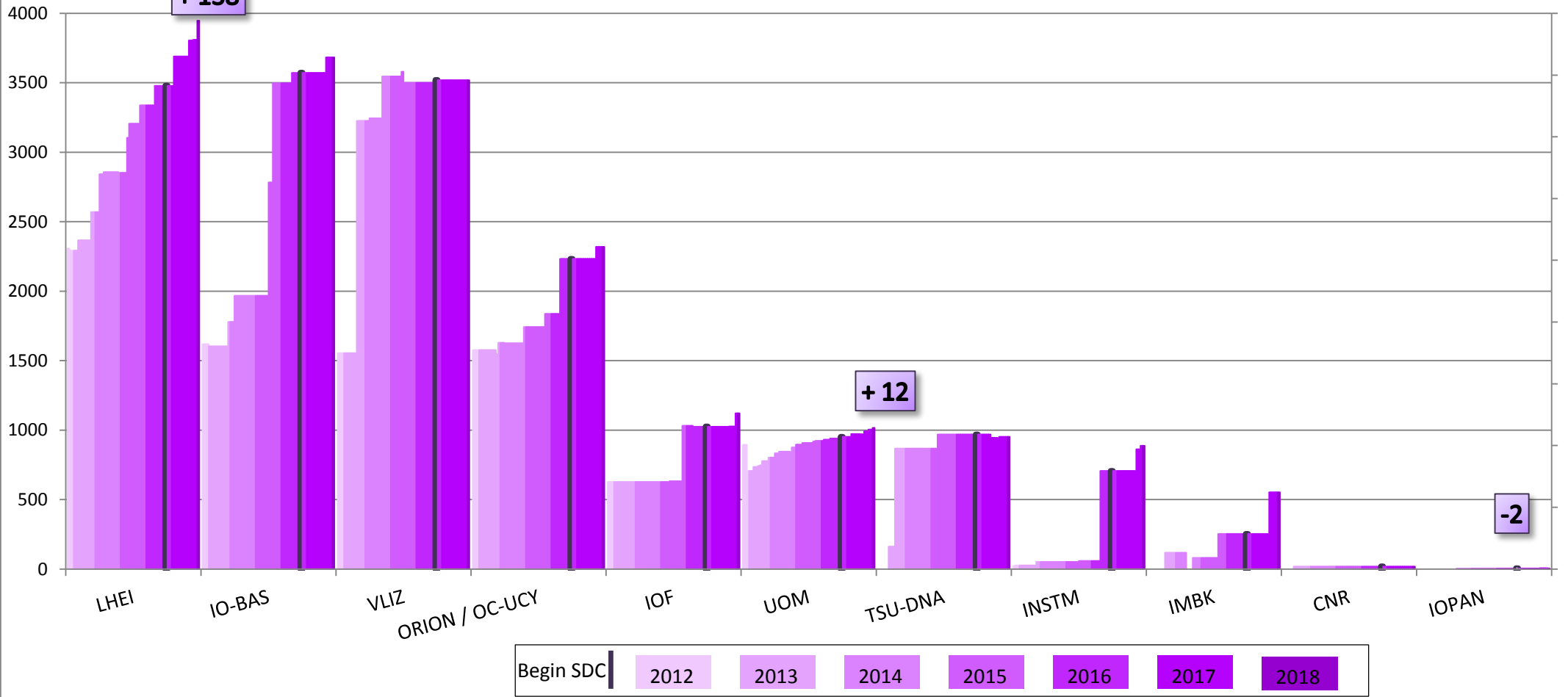
+ 3 111



### Partners with 4 000 < CDI entries < 10 000



# Partners with less than 4 000 CDI entries



## Statistics on CSR harvesting

The CSR automatic harvesting result for this month is 28 new records and 24 updates .

Details of harvesting per centre are the following:

Centre	Date	New	Update
<b>IEO (353)</b>	02/01/2018	1	
<b>IFREMER (486)</b>	09/01/2018		5
<b>IFREMER (486)</b>	16/01/2018	9	5
<b>IEO (353)</b>	23/01/2018	11	
<b>IFREMER (486)</b>	30/01/2018	7	14
<b>Total</b>		<b>28</b>	<b>24</b>

HCMR and OGS had no CSR creations or updates during this month.





## History

### Global counts on all catalogues in 2017

Catalogue	Jan-17	Feb-17	Mar-17	Apr-17	May-17	Jun-17	Jul-17	Aug-17	Sep-17	Oct-17	Nov-17	Dec-17
EDMO	3 802	3 812	3 826	3 832	3 838	3 869	3 880	3 886	3 891	3 899	3 915	3 920
EDMED	4 082	4 085	4 084	4 096	4 099	4 101	4 101	4 108	4 131	4 135	4 142	4 149
EDMERP	2 981	2 988	2 990	2 990	2 992	2 993	3 000	3 016	3 018	3 020	3 026	3 036
EDIOS-PRG	362	362	362	362	362	362	362	362	362	362	362	362
CSR	46 356	46 398	46 480	46 681	46 724	46 723	46 756	46 893	47 301	47 455	47 558	47 684
CDI	1 947 452	1 949 991	1 955 483	1 968 060	1 971 285	1 974 509	1 977 738	1 980 818	2 000 402	2 063 832	2 081 618	2 093 605

### Global counts on all catalogues in 2016

Catalogue	Jan-16	Feb-16	Mar-16	Apr-16	May-16	Jun-16	Jul-16	Aug-16	Sep-16	Oct-16	Nov-16	Dec-16
EDMO	3 671	3 670	3 686	3 691	3 695	3 712	3 730	3 733	3 747	3 758	3 775	3 791
EDMED	4 060	4 066	4 007	4 061	4 062	4 067	4 069	4 074	4 076	4 077	4 077	4 077
EDMERP	2 903	2 961	2 961	2 961	2 966	2 971	2 971	2 974	2 975	2 975	2 975	2 979
EDIOS-PRG	362	362	362	362	362	362	362	362	362	362	362	362
CSR	46 688	46 845	46 928	47 606	47 625	47 684	47 722	47 744	47 770	45 990	46 043	46 175
CDI	1 813 947	1 819 492	1 824 402	1 825 957	1 844 660	1 854 787	1 858 162	1 864 378	1 869 790	1 873 823	1 884 034	1 936 759

## Global counts on all catalogues in 2015

Catalogue	Jan-15	Feb-15	Mar-15	Apr-15	May-15	Jun-15	Jul-15	Aug-15	Sep-15	Oct-15	Nov-15	Dec-15
EDMO	3 210	3 223	3 275	3 324	3 422	3 532	3 556	3 564	3 583	3 619	3 639	3 659
EDMED	3 980	3 982	3 984	3 984	3 990	3 992	4 014	4 034	4 053	4 055	4 054	4 060
EDMERP	2 858	2 866	2 878	2 878	2 886	2 898	2 900	2 900	2 901	2 903	2 903	2 903
EDIOS-PRG	360	360	361	361	361	361	361	361	362	362	362	362
CSR	45 483	45 534	45 744	45 810	45 906	45 969	46 059	46 108	46 342	46 444	46 563	46 641
CDI	1 714 285	1 721 708	1 721 604	1 720 724	1 709 958	1 764 762	1 767 715	1 779 199	1 784 327	1 796 791	1 800 648	1 809 541

## Global counts on all catalogues in 2014

Catalogue	Jan-14	Feb-14	Mar-14	Apr-14	May-14	Jun-14	Jul-14	Aug-14	Sep-14	Oct-14	Nov-14	Dec-14
EDMO	2 451	2 467	2 651	2 685	2 688	2 692	2 693	2 701	2 875	3 103	3 199	3 212
EDMED	3 944	3 945	3 945	3 947	3 948	3 955	3 957	3 960	3 961	3 962	3 963	3 965
EDMERP	2 787	2 808	2 830	2 832	2 834	2 837	2 841	2 844	2 847	2 849	2 850	2 857
EDIOS-PRG	359	360	360	360	360	360	360	360	360	360	360	360
CSR	44 230	44 294	44 447	44 518	44 518	44 657	44 696	45 012	45 072	45 109	45 156	45 163
CDI	1 498 793	1 537 556	1 558 428	1 566 528	1 569 847	1 575 035	1 604 916	1 612 514	1 621 749	1 626 904	1 631 984	1 662 548

## Global counts on all catalogues in 2012/2013

Catalogue	Sept-12	Oct-12	Nov-12	Dec-12	Jan-13	Feb-13	Mar-13	Apr-13	May-13	Aug-13	Sep-13	Oct-13	Nov-13	Dec-13
EDMO	2 261	2 283	2 296	2 304	2 330	2 351	2 359	2 362	2 370	2 384	2 404	2 404	2 423	2 431
EDMED	3 834	3 834	3 834	3 834	3 834	3 834	3 882	3 885	3 885	3 889	3 901	3 901	3 925	3 944
EDMERP	2 617	2 637	2 667	2 674	2 683	2 684	2 685	2 686	2 690	2 698	2 710	2 710	2 772	2 772
EDIOS-PRG	350	350	350	350	353	353	353	353	354	356	358	359	359	359
CSR	41 330	41 481	41 832	42 256	43 423	43 539	43 782	44 153	43 479	43 687	43 713	43 765	44 094	44 236
CDI	1 088 322	1 097 399	1 241 010	1 267 669	1 274 982	1 291 491	1 302 629	1 311 827	1 317 191	1 350 455	1 356 245	1 360 236	1 386 446	1 496 950