

Dear colleagues,

Here are the graphs for monitoring the SeaDataNet catalogues content (all documents are available on the extranet of the project under [SeaDataNet II> Follow up](#)).

You can see that there are **increases** on: EDMO (+19), EDMED (+24), EDMERP (+62), CSR (+329) and CDI (+26210) whereas EDIOS has the same content than last month.

For November 2013, the changes in the CDI catalogue are the following, 17 partners have input or deleted data in the CDI:

Data centre	Country	Number of new records
IMR	Norway	+19927
NERC-BODC	United Kingdom	+7086
BSH-DOD	Germany	+5390
IFREMER	France	+3758
IHPT	Portugal	+966
NIOZ	Netherlands	+450
IOLR	Israel	+336
NIB	Slovenia	+250
SMHI	Sweden	+238
HCMR	Greece	+219
IO-BAS	Bulgaria	+204
MI	Ireland	+54
IEO	Spain	+39
IMBK	Montenegro	+24
METU-IMS	Turkey	-3
IOF	Croatia	-28
MSI	Estonia	-12700
Total		+26210

Catalogue	Catalogue	Sept-12	Oct-12	Nov-12	Dec-12	Jan-13	Feb-13	Mar-13	Apr-13	May-13	Aug-13	Sep-13	Oct-13	Nov-13
EDMO : Marine organisations	EDMO	2 261	2 283	2 296	2 304	2 330	2 351	2 359	2 362	2 370	2 384	2 404	2 404	2 423
EDMED : Data sets	EDMED	3 834	3 834	3 834	3 834	3 834	3 834	3 882	3 885	3 885	3 889	3 901	3 901	3 925
EDMERP : Projects	EDMERP	2 617	2 637	2 667	2 674	2 683	2 684	2 685	2 686	2 690	2 698	2 710	2 710	2 772
EDIOS : Programmes	EDIOS-PRG	350	350	350	350	353	353	353	353	354	356	358	359	359
CSR : Cruises	CSR	41 330	41 481	41 832	42 256	43 423	43 539	43 782	44 153	43 479	43 687	43 713	43 765	44 094
CDI : Data	CDI	1 088 322	1 097 399	1 241 010	1 267 669	1 274 982	1 291 491	1 302 629	1 311 827	1 317 191	1 350 455	1 356 245	1 360 236	1 386 110
Number of SeaDataNet connected nodes			39	39	39	39	39	42	43	45	47	47	48	48
Number of missing SDN nodes			9	9	9	9	9	6	5	3	1	1	0	0

Figure 1 - Global counts on all catalogues

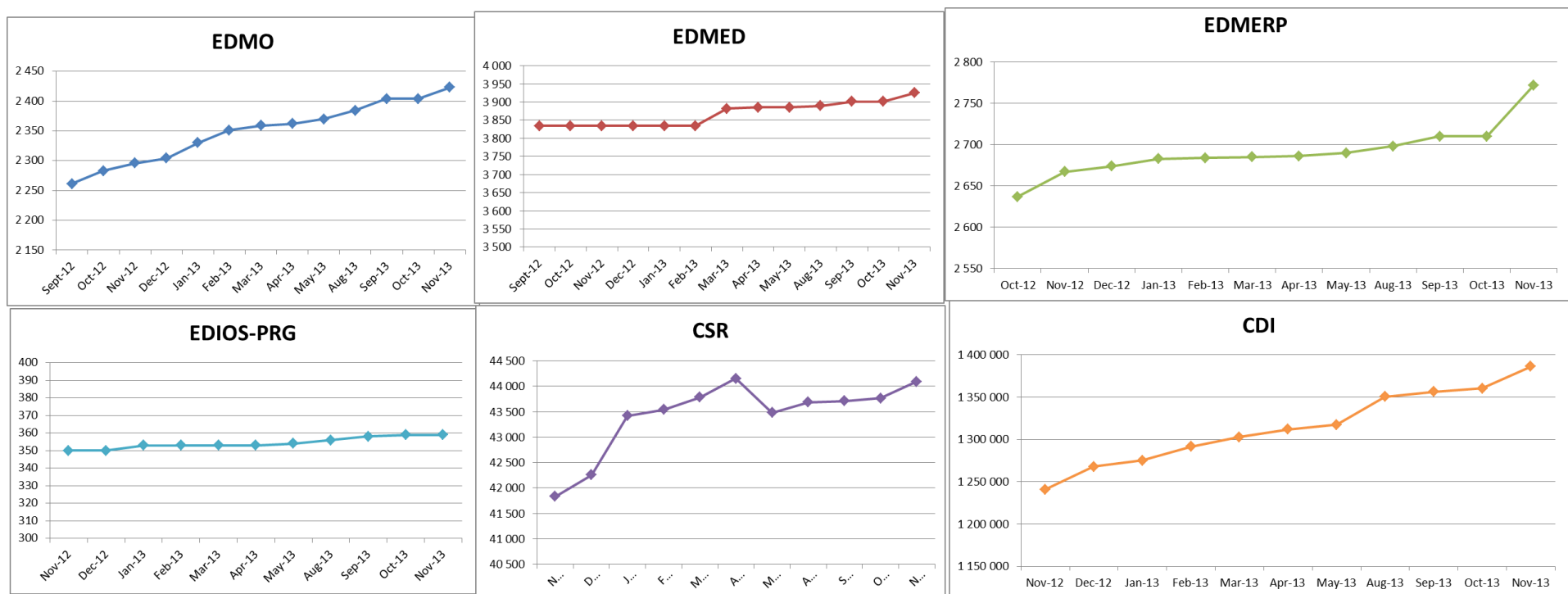


Figure 2 - Nb of CDI per partner, data centres with new data in November 2013

