

January 2014 – SeaDataNet catalogues follow-up

Here are the graphs for monitoring the SeaDataNet catalogues content (all documents are available on the extranet of the project under [SeaDataNet II> Follow up](#)).

In January 2014, we can note increases on: EDMO (+20), EDMERP(+15) and CDI (+1 843) whereas EDMED and EDIOS have the same content than last month, and CSR a small decrease of 6 records.

5 partners have input data in the CDI catalogue, for a total increase of 1 844 records. Which gives a total of almost 1.5 Million records in the CDI catalogue.

Details per partners are the following:

| Data centre | Country | Number of new records |
|--------------------|----------------|------------------------------|
| NERC-BODC | United Kingdom | +1 064 |
| IEO | Spain | +477 |
| MSI | Estonia | +256 |
| ENEA | Italy | +28 |
| SMHI | Sweden | +27 |
| Total | | +1 844 |

| Catalogue | Sept-12 | Oct-12 | Nov-12 | Dec-12 | Jan-13 | Feb-13 | Mar-13 | Apr-13 | May-13 | Aug-13 | Sep-13 | Oct-13 | Nov-13 | Dec-13 | Jan-14 |
|-----------|-----------|-----------|-----------|-----------|-----------|-----------|-----------|-----------|-----------|-----------|-----------|-----------|-----------|-----------|-----------|
| EDMO | 2 261 | 2 283 | 2 296 | 2 304 | 2 330 | 2 351 | 2 359 | 2 362 | 2 370 | 2 384 | 2 404 | 2 404 | 2 423 | 2 431 | 2 451 |
| EDMED | 3 834 | 3 834 | 3 834 | 3 834 | 3 834 | 3 834 | 3 882 | 3 885 | 3 885 | 3 889 | 3 901 | 3 901 | 3 925 | 3 944 | 3 944 |
| EDMERP | 2 617 | 2 637 | 2 667 | 2 674 | 2 683 | 2 684 | 2 685 | 2 686 | 2 690 | 2 698 | 2 710 | 2 710 | 2 772 | 2 772 | 2 787 |
| EDIOS-PRG | 350 | 350 | 350 | 350 | 353 | 353 | 353 | 353 | 354 | 356 | 358 | 359 | 359 | 359 | 359 |
| CSR | 41 330 | 41 481 | 41 832 | 42 256 | 43 423 | 43 539 | 43 782 | 44 153 | 43 479 | 43 687 | 43 713 | 43 765 | 44 094 | 44 236 | 44 230 |
| CDI | 1 088 322 | 1 097 399 | 1 241 010 | 1 267 669 | 1 274 982 | 1 291 491 | 1 302 629 | 1 311 827 | 1 317 191 | 1 350 455 | 1 356 245 | 1 360 236 | 1 386 446 | 1 496 950 | 1 498 793 |

Figure 1 - Global counts on all catalogues

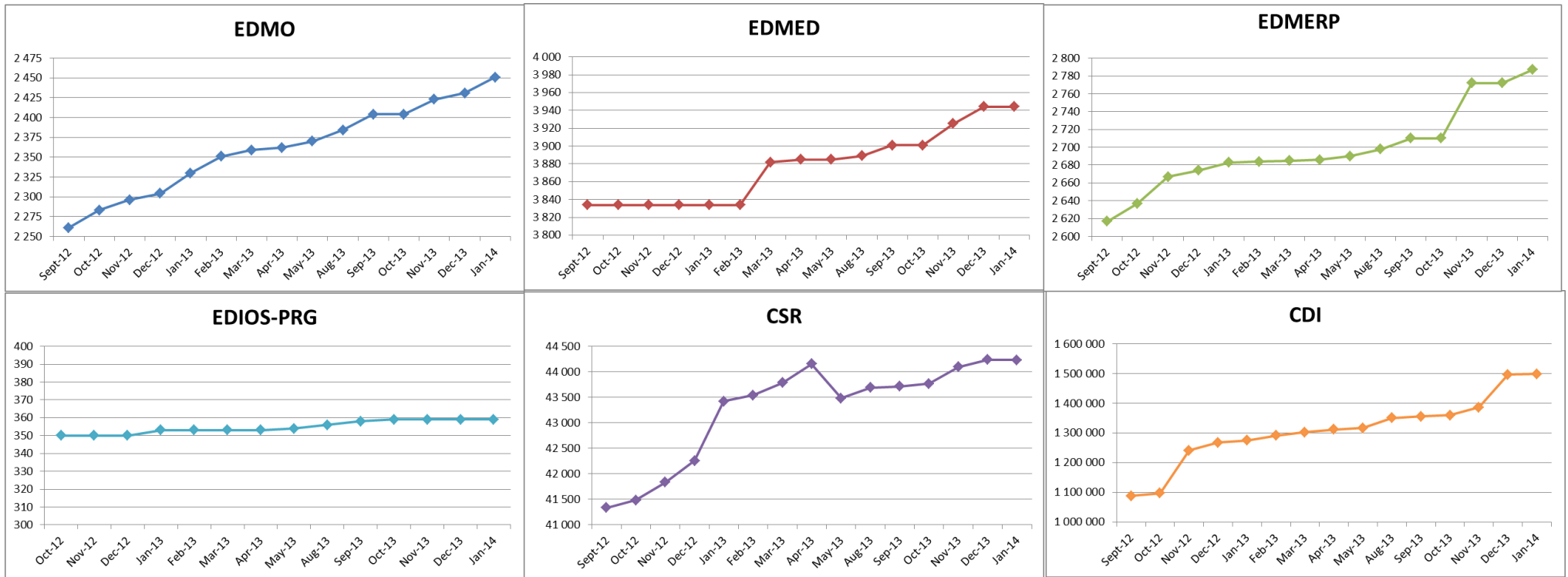


Figure 2 - Nb of CDI per partner, data centres with new data in January 2014

