

April 2020 – SeaDataCloud catalogues follow-up

All documents used to write this report are available on the extranet of the project under [SeaDataCloud > Follow up](#).

Statistics on all catalogues

In April 2020, global increases on catalogues :

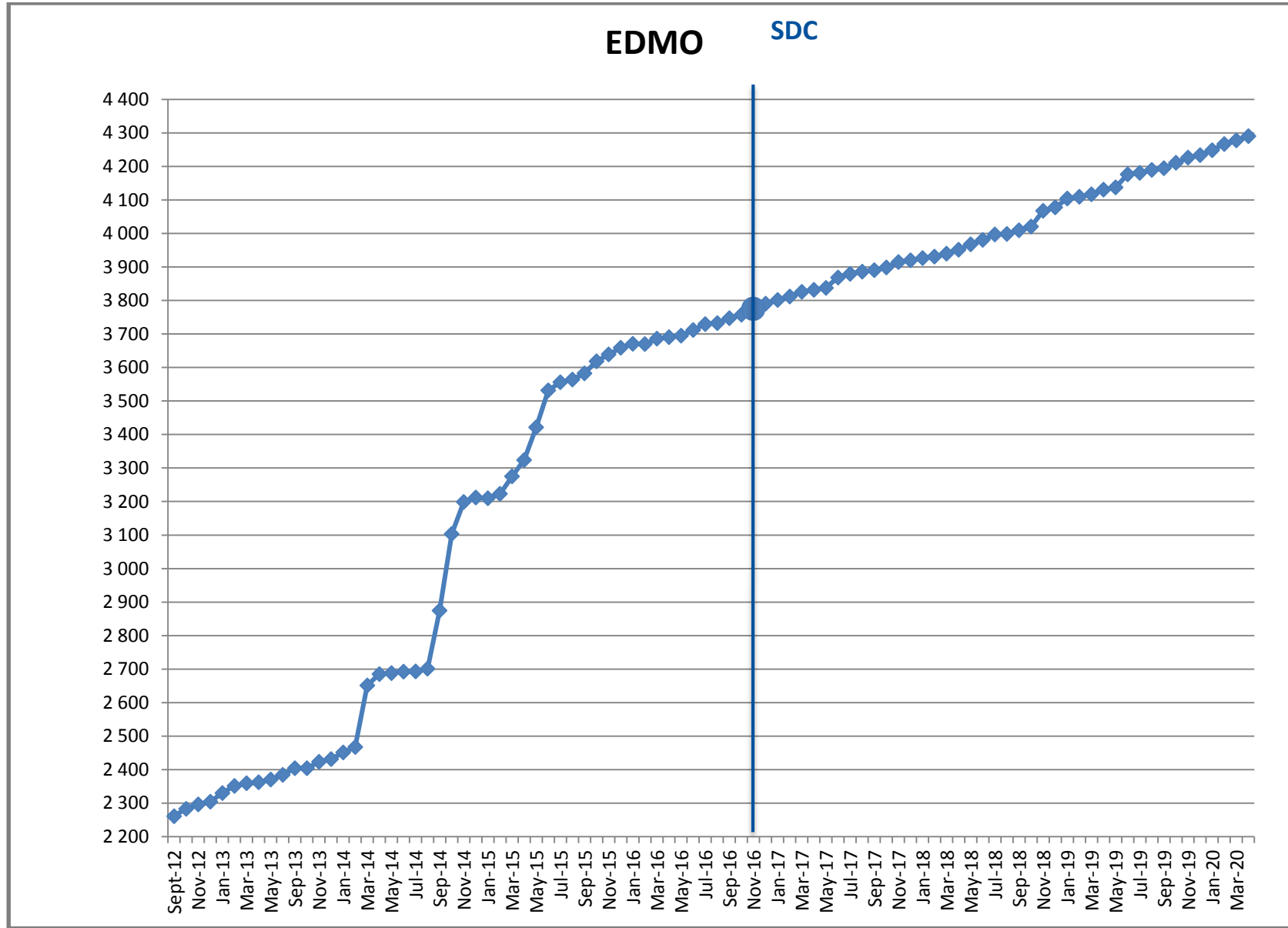
- **EDMO (Marine organisations)** : **+13** - Total : **4 291**
- **EDMED (Data sets)** : **+4** - Total : **4 232**
- **EDMERP (Projects)** : **+13** - Total : **3 190**
- **EDIOS-PRG**
 - Programmes : - Total : **370**
 - Series : - Total : **16 645**
- **CSR (Cruises)** : **+84** - Total : **58 261**
- **CDI (Data)** : **+15 854** - Total : **2 349 773**

Since the beginning of SeaDataCloud :

Catalogue	Apr-20	Mar-20	Feb-20	Jan-20	Dec-19	Nov-19	Oct-19	Sep-19	Aug-19	Jul-19	Jun-19	May-19	Oct-16	Increase*
EDMO	4 291	4 278	4 267	4 249	4 234	4 227	4 211	4 195	4 190	4 181	4 177	4 138	3 758	533
EDMED	4 232	4 228	4 227	4 225	4 223	4 213	4 210	4 209	4 206	4 205	4 205	4 207	4 077	155
EDMERP	3 190	3 177	3 170	3 166	3 164	3 163	3 159	3 149	3 144	3 144	3 138	3 135	2 975	215
EDIOS-PRG	370	370	370	368	367	367	367	367	363	363	363	363	362	8
EDIOS-Series	16 645	16 645	16 645	16 645	16 635	16 635	16 635	16 625	16 625	16 623	16 623	16 623	16 613	32
CSR	58 261	58 177	58 062	57 920	57 866	57 749	57 637	57 537	57 474	57 437	57 331	57 267	53 484	4 777
CDI	2 349 773	2 333 919	2 311 070	2 289 624	2 288 566	2 283 087	2 281 710	2 316 610	2 316 610	2 316 610	2 316 223	2 306 093	1 873 823	475 950

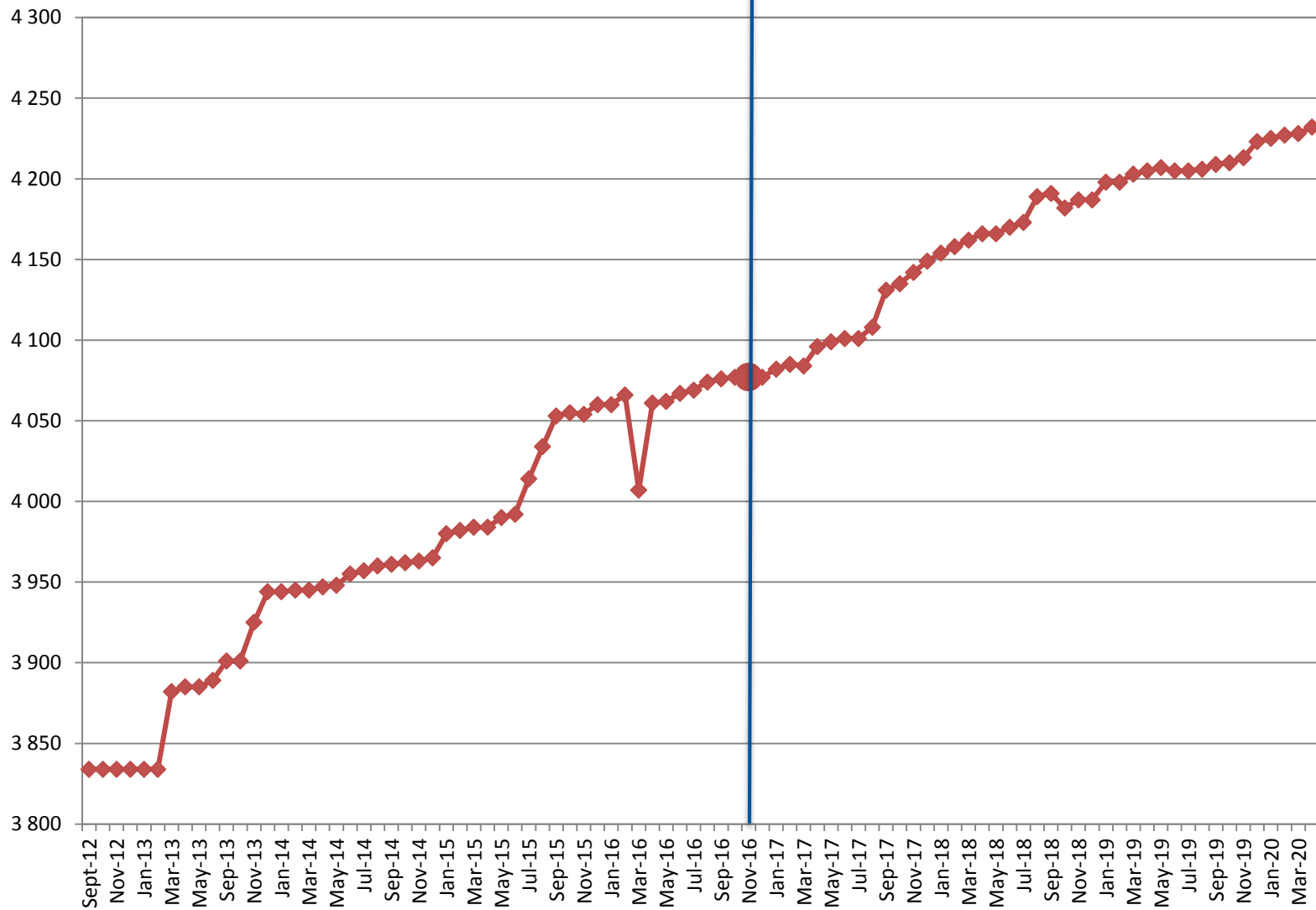
(*) Increase since beginning of SeaDataCloud (01/11/2016)

Nb of EDMO, EDMED, EDMERP, EDIOS, CSR and CDI per month

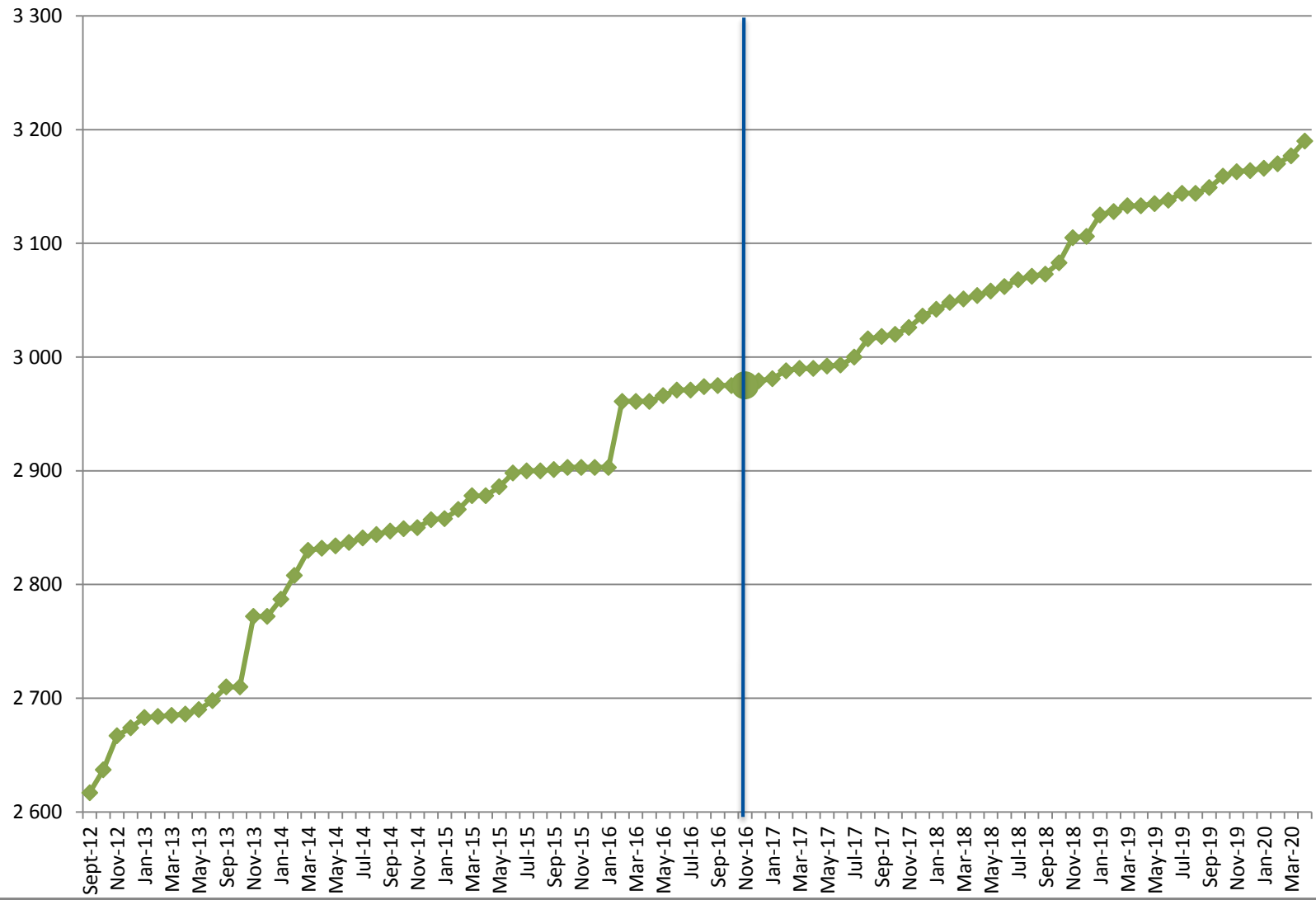


EDMED

SDC



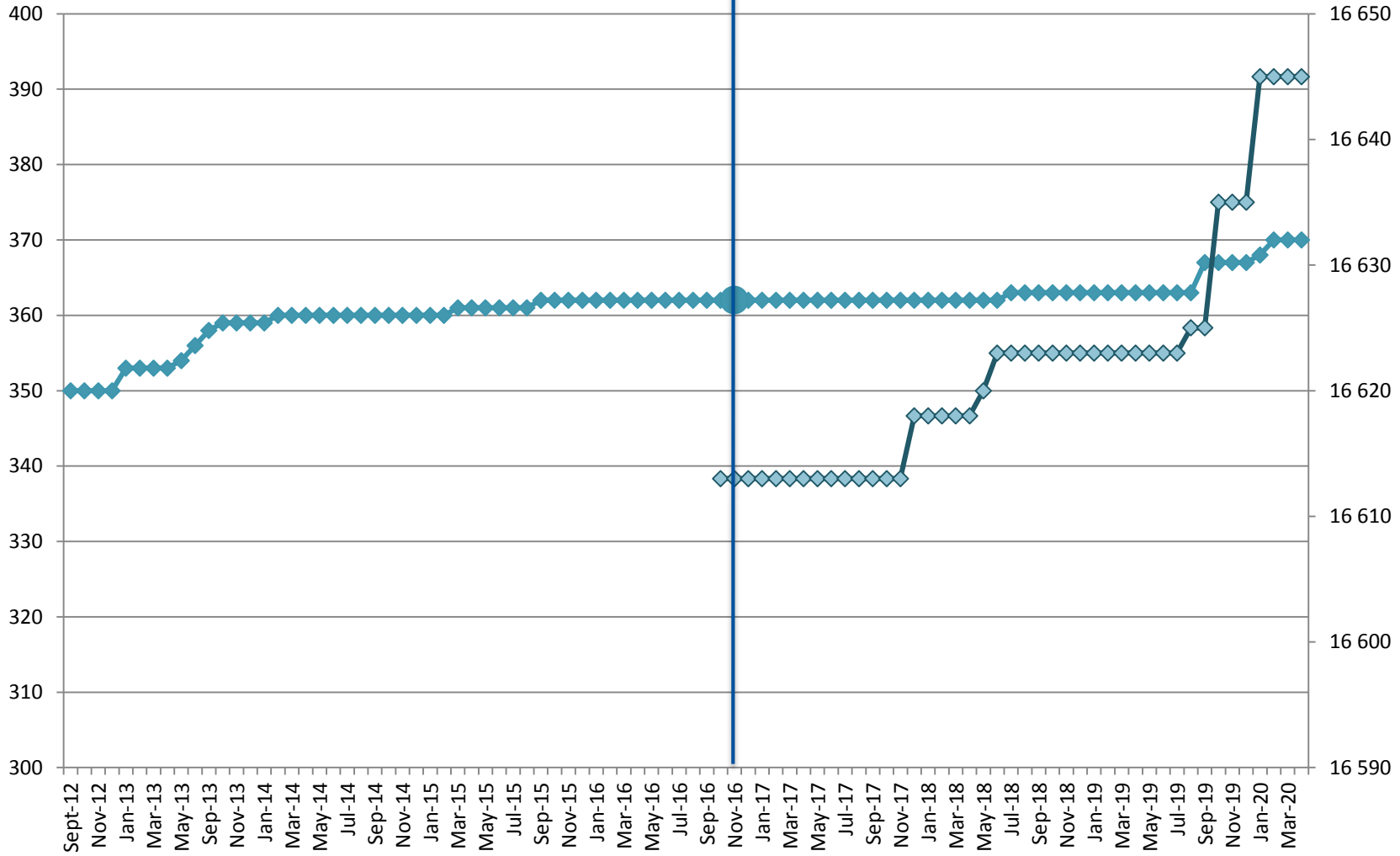
EDMERP SDC



EDIOS

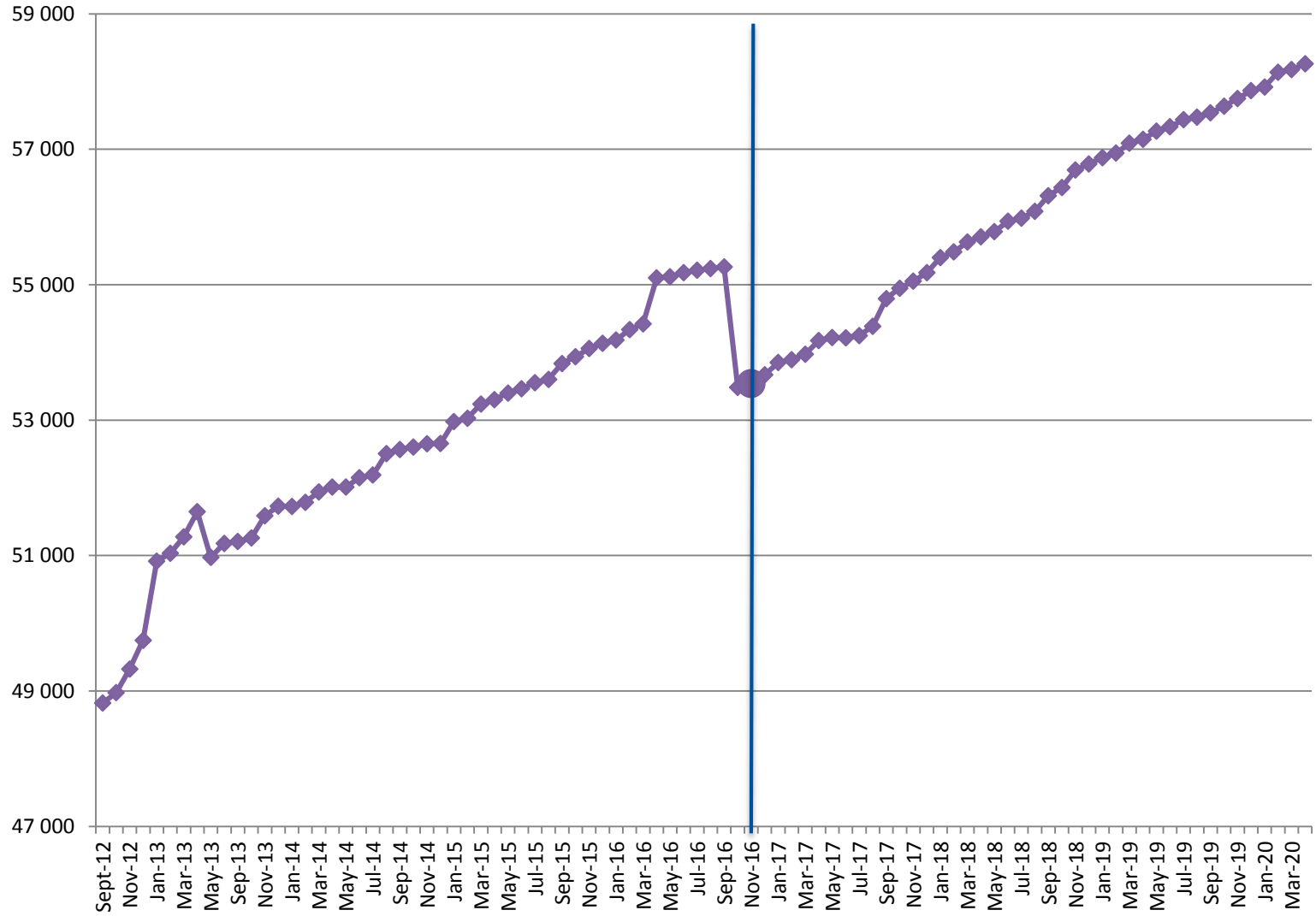
◆ Programmes ◆ Series

SDC



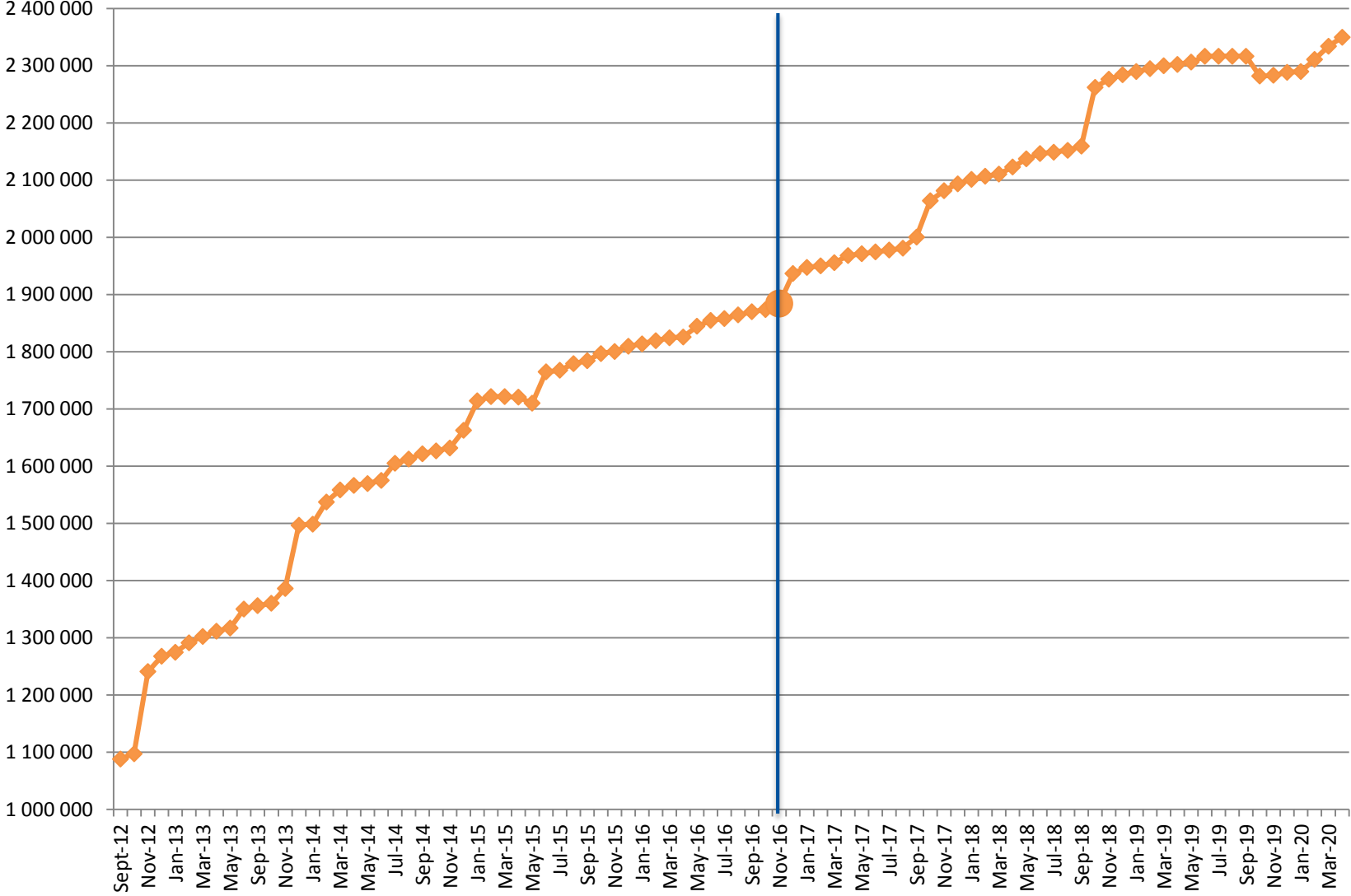
CSR

SDC



CDI

SDC



Statistics on CDI catalogue

Details of last month upgrades per partners are the following:

CDI partner	Country	Last increase as distributor	Last increase as custodian
BSH	Germany	0	+5 791
CNRS/OASU	France	+430	+430
HCMR	Greece	+53	+53
IEO	Spain	-470	-470
GEOMAR	Germany	0	+9 341
IMGW	Poland	+1 158	+1 158
IFREMER	France	+15 132	0
MI	Ireland	-236	-236
NIMRD	Romania	+38	+38
OGS	Italy	+485	+485
SMHI	Sweden	+275	+275
SYKE	Finland	+506	+506
TOTAL		+17 371	+17 371

- 10 SeaDataCloud partners had input or decrease data in the CDI catalogue, for a total increase of **+17 371 records**.
- 4 others partners, not in the SeaDataCloud consortium, have worked for a decrease of **-1 517 records**.

There are 113 partners (as distributor) with CDIs :

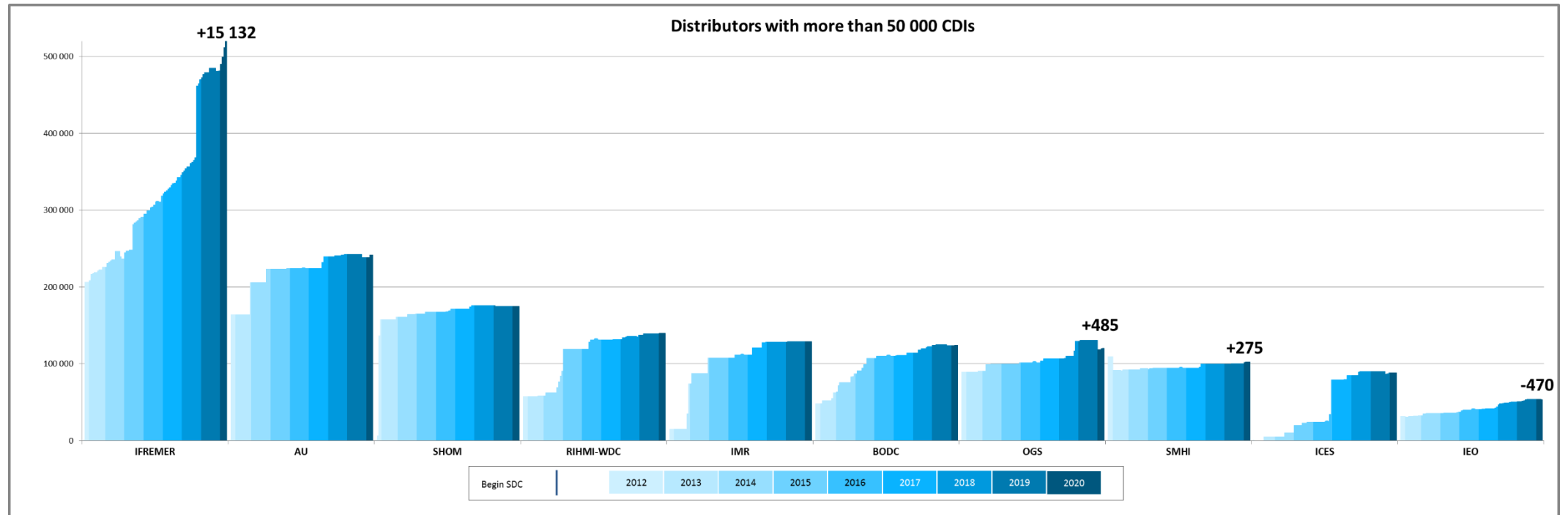
- 43 SeaDataCloud partners and
- 70 other partners.

Since the beginning of the follow-up reports (October 2012), the increase in CDI since start SDC (November 2016), between end SDN2 (September 2015) and start SDC, increase since SDN2, per partner, is the following: Note that for SMHI and SIO-RAS the negative increase since start SDN2 is due to the change in their time series management (SMHI), the change of data owner and the remove of incorrect records (SIO-RAS). The new owner is SOI, not in the SeaDataCloud consortium).

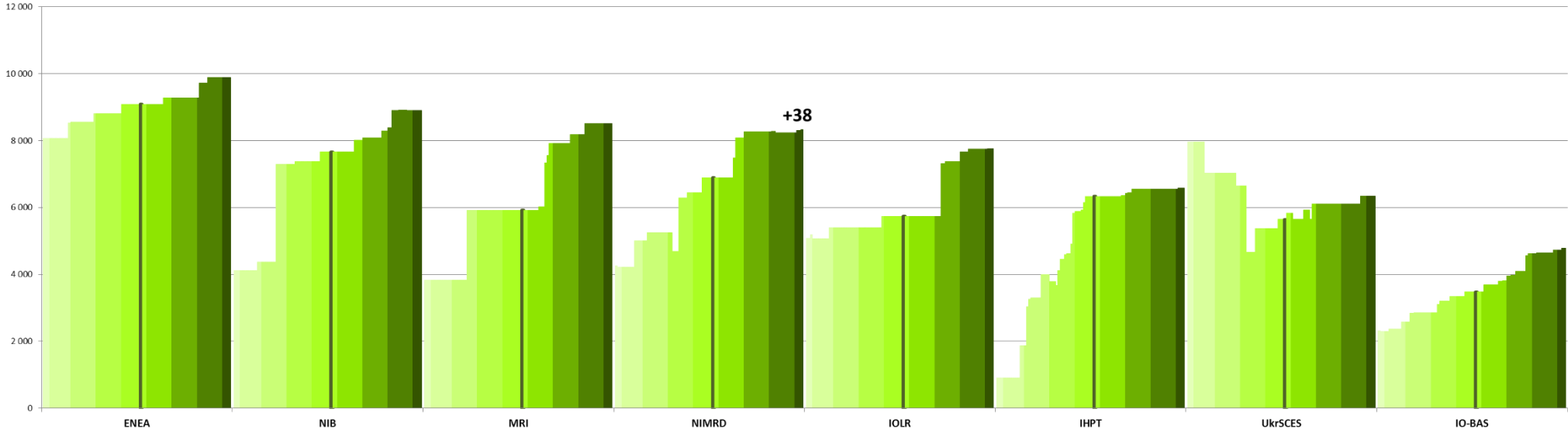
CDI partner	Name of partner	Country	Nb as distributor 04/05/2020	Nb as Custodian 04/05/2020	Increase as distributor since start SDC	Increase as custodian since start SDC	Increase as distributor between SDN2 and SDC	Increase as distributor since start SDN2
GEOMAR	Helmholtz Centre for Ocean Research Kiel	Germany	0	11 293	0	11 293	0	-
IOPAN	IOPAN	Poland	18	18	0	0	0	18
IMGW	Instytut Meteorologii i Gosodarki Wodnej	Poland	13 110	13 110	0	0	1 770	13 110
CNRS/OSU-SBR	Roscoff Marine Station, Sorbonne Universités, UPMC Univ Paris 06 and CNRS	France	2	735	2	735	0	2
CNRS/MIO	CNRS/Mediterranean Institute of Oceanography-LUMINY (MIO)-UMR 7294/235/110	France	67	67	67	67	0	67
UTM-CSIC	UTM-CSIC/Marine Technology Unit	Spain	582	603	576	597	0	582
CNR	CNR - Institute of Atmospheric Sciences and Climate (ISAC) (Rome)	Italy	874	874	621	621	0	874
INSTM	Institut National des Sciences et Technologies de la Mer	Tunisia	973	973	4	4	0	973
IMBK	Institute of Marine Biology (IMBK)	Montenegro	974	982	268	276	647	952
TSU-DNA	Iv.Javakhishvili Tbilisi State University	Georgia	1 127	1 130	175	178	34	232
UOM	University Of Malta	Malta	1 922	1 922	897	897	393	1 294
IOF	Institute of Oceanography and Fisheries	Croatia	2 770	2 770	537	537	490	1 194
LHEI	Latvian Institute of Aquatic Ecology	Latvia	3 248	3 486	-236	2	536	2 941
ORION	ORION Joint Research and Development Center	Cyprus	3 593	3 593	3 593	3 593	0	3 593
VLIZ	Flanders Marine Institute	Belgium	3 779	3 779	207	207	74	2 160
CNRS/OASU	Aquitaine Observatory of Sciences of the Universe - University of Bordeaux (OASU)	France	3 913	3 913	3 913	3 913	1	3 913
IO-BAS	Bulgarian National Oceanographic Data Centre(BGODC)	Bulgaria	4 789	4 789	1 310	1 310	273	2 481
UkrSCES	Ukrainian scientific center of Ecology of Sea (UkrSCES)	Ukraine	6 339	6 339	695	695	267	6 339
IHPT	IHPT, Hydrographic institute	Portugal	6 578	6 578	245	245	1 713	5 673
IOLR	Israel Oceanographic and Limnological Research (IOLR)	Israel	7 755	7 755	2 023	2 023	333	2 682
NIMRD	National Institute for Marine Research and Development Grigore Antipa	Romania	8 337	8 560	1 447	1 670	602	4 083
MRI	Marine Research Institute (MRI)	Iceland	8 511	8 511	2 597	2 597	0	4 687
NIB	National Institute of Biology - NIBMarine Biology Station	Slovenia	8 908	8 908	1 246	1 246	287	4 788

ENEA	ENEA Centro Ricerche Ambiente Marino - La Spezia	Italy	9 887	9 887	798	798	284	1 813
SIO-RAS	P.P.Shirshov Institute of Oceanology-RAS	Russian Federation	12 384	12 384	1 943	1 943	482	-26 439
RBINS	Royal Belgian Institute of Natural Sciences	Belgium	12 913	12 913	584	584	0	1 380
SYKE	Finnish Environment Institute	Finland	15 072	15 388	8 865	9 181	5 162	15 072
NIOZ	NIOZ Royal Netherlands Institute for Sea Research	Netherlands	16 897	6 341	10 767	211	46	12 268
MI	Marine Institute	Ireland	18 123	20 639	9 874	12 390	0	13 422
HCMR	Hellenic Centre for Marine Research	Greece	23 655	25 965	7 666	9 976	260	11 631
MSI	Marine Systems Institute at Tallinn University of Technology	Estonia	27 506	27 397	1 032	923	-3	14 509
METU-IMS	Institute of Marine Sciences, Middle East Technical University	Turkey	32 902	32 965	4 885	4 948	2 222	29 820
FMI	Finnish Meteorological Institute	Finland	33 351	33 351	19 851	19 851	0	31 140
BSH	German Oceanographic Datacentre (NODC)	Germany	40 482	105 524	1 035	66 077	465	23 204
IEO	IEO/Spanish Oceanographic Institute	Spain	53 090	53 057	12 734	12 701	4 265	21 675
ICES	International Council for the Exploration of the Sea (ICES)	Denmark	88 110	80 564	63 939	56 393	369	88 110
SMHI	Swedish Meteorological and Hydrological Institute	Sweden	102 666	104 449	8 380	10 163	0	-6 861
OGS	OGS (Istituto Nazionale di Oceanografia e di Geofisica Sperimentale)	Italy	120 413	119 007	18 866	17 460	1 922	30 815
BODC	British Oceanographic Data Centre	United Kingdom	124 531	124 531	14 528	14 528	2 973	76 474
IMR	Institute of Marine Research - Norwegian Marine Data Centre (NMD)	Norway	129 022	129 022	17 385	17 385	3 808	114 229
RIHMI-WDC	All-Russia Research Institute of Hydrometeorological Information - World Data Centre	Russian Federation	139 619	139 619	8 287	8 287	12 003	82 494
SHOM	Shom	France	175 036	190 225	3 702	18 891	3 754	168 613
AU	Aarhus University	Denmark	242 106	242 106	18 151	18 151	609	77 952
IFREMER	IFREMER / IDM/SISMER	France	527 087	433 703	216 330	122 946	24 240	320 888
		TOTAL	2 033 021	2 019 725	469 789	456 493	70 281	1 164 847

CDIs number per month and per distributors

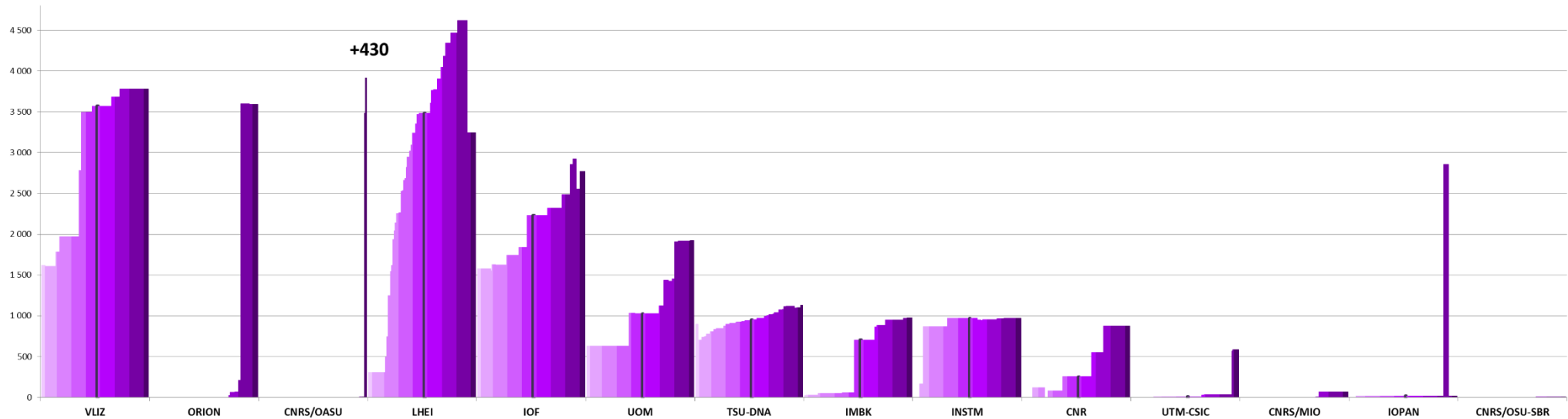


Distributors with 4 000 < CDI entries < 10 000

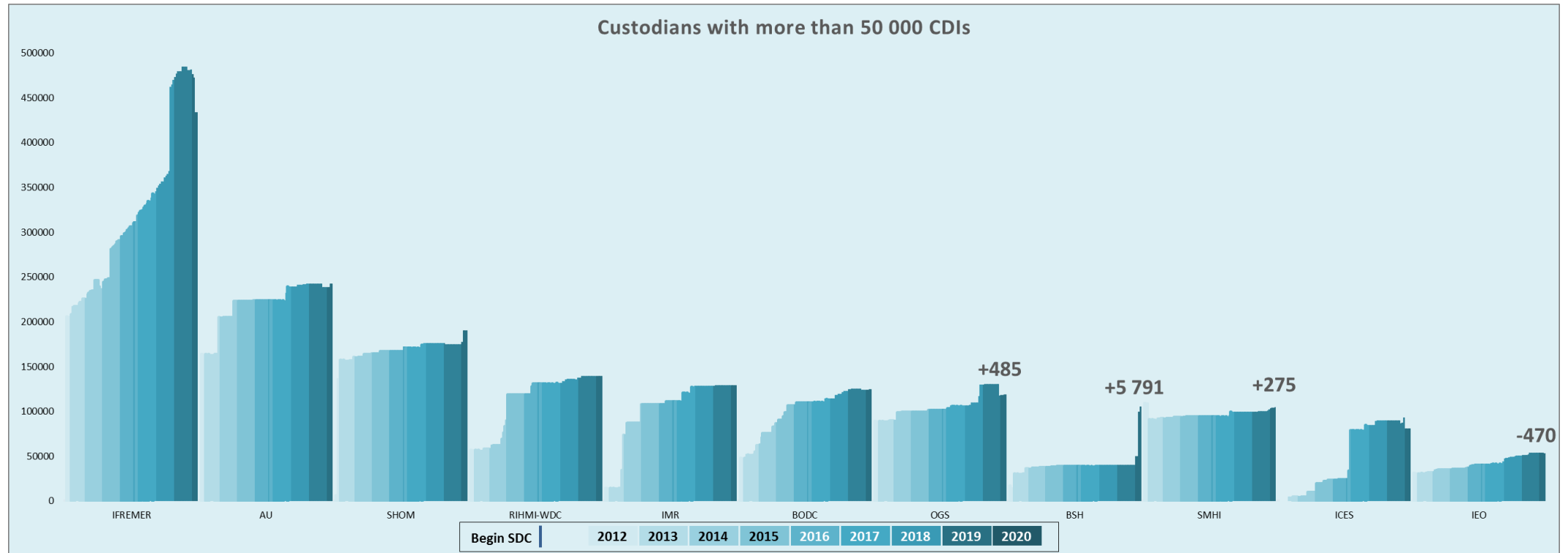


BeginSDC	2012	2013	2014	2015	2016	2017	2018	2019	2020
----------	------	------	------	------	------	------	------	------	------

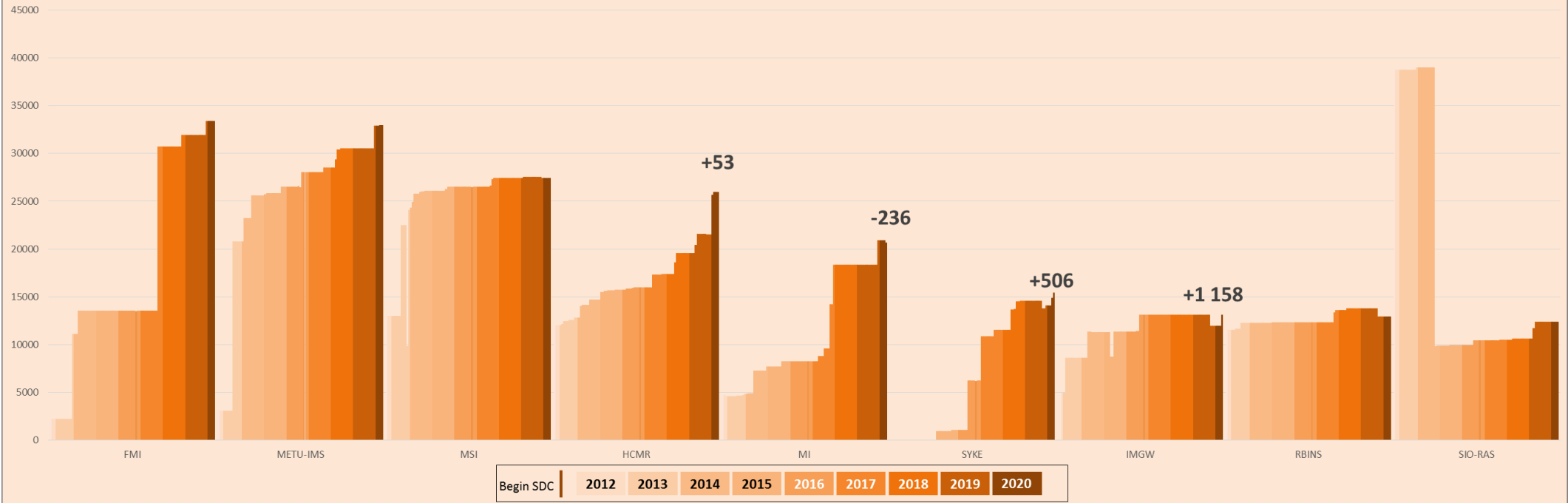
Distributors with less than 4 000 CDI entries



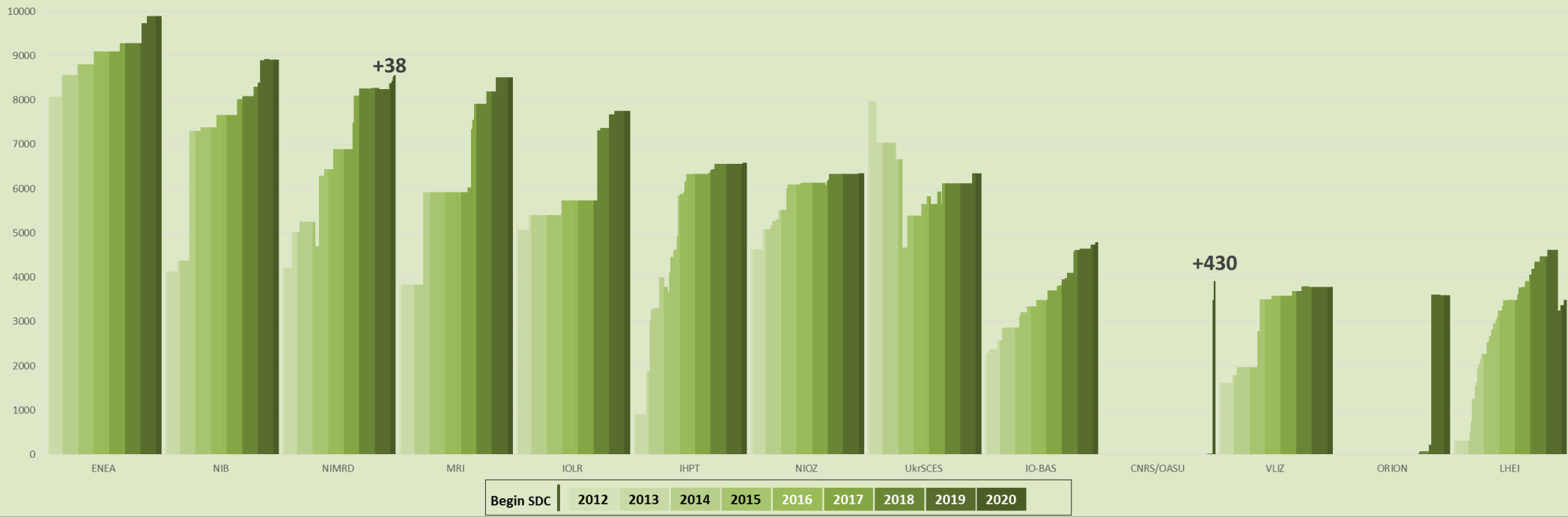
CDIs number per month and per custodians



Custodians with 10 000 < CDIs < 50 000



Custodians with 3 000 < CDI entries < 10 000



Statistics on CSR harvesting

The CSR automatic harvesting result for this month is 10 new records and 60 updates .

Details of harvesting per centre are the following:

Centre	Date	New	Update
IFREMER (486)	07/04/2020	6	3
IFREMER (486)	14/04/2020	3	7
IFREMER (486)	21/04/2020		17
IFREMER (486)	28/04/2020	1	33
Total		10	60

OGS and UTM-CSIC had no CSR creations or updates during this month.

The graph below shows the CSR harvesting inputs since beginning of 2015:

History

Global counts on all catalogues in 2019

Catalogue	Jan-19	Feb-19	Mar-19	Apr-19	May-19	Jun-19	Jul-19	Aug-19	Sep-19	Oct-19	Nov-19	Dec-19
EDMO	4 105	4 110	4 117	4 131	4 138	4 177	4 181	4 190	4 195	4 211	4 227	4 234
EDMED	4 198	4 198	4 203	4 205	4 207	4 205	4 205	4 206	4 209	4 210	4 213	4 223
EDMERP	3 125	3 128	3 133	3 133	3 135	3 138	3 144	3 144	3 149	3 159	3 163	3 164
EDIOS-PRG	363	363	363	363	363	363	363	363	367	367	367	367
CSR	56 877	56 943	57 089	57 148	57 267	57 331	57 437	57 474	57 537	57 637	57 749	57 866
CDI	2 289 929	2 294 771	2 299 924	2 302 286	2 306 093	2 316 223	2 316 610	2 316 610	2 316 610	2 281 710	2 283 087	2 288 566

Global counts on all catalogues in 2018

Catalogue	Jan-18	Feb-18	Mar-18	Apr-18	May-18	Jun-18	Jul-18	Aug-18	Sep-18	Oct-18	Nov-18	Dec-18
EDMO	3 927	3 931	3 940	3 952	3 968	3 981	3 997	3 999	4 010	4 021	4 068	4 078
EDMED	4 154	4 158	4 162	4 166	4 166	4 170	4 173	4 189	4 191	4 182	4 187	4 187
EDMERP	3 042	3 048	3 051	3 054	3 058	3 062	3 068	3 071	3 073	3 083	3 105	3 106
EDIOS-PRG	362	362	362	362	362	362	363	363	363	363	363	363
CSR	55 399	55 485	55 630	55 709	55 783	55 937	55 982	56 085	56 316	56 436	56 694	56 783
CDI	2 101 090	2 106 680	2 110 688	2 122 824	2 137 067	2 146 266	2 148 856	2 152 074	2 159 216	2 262 108	2 276 264	2 283 986

Global counts on all catalogues in 2017

Catalogue	Jan-17	Feb-17	Mar-17	Apr-17	May-17	Jun-17	Jul-17	Aug-17	Sep-17	Oct-17	Nov-17	Dec-17
EDMO	3 802	3 812	3 826	3 832	3 838	3 869	3 880	3 886	3 891	3 899	3 915	3 920
EDMED	4 082	4 085	4 084	4 096	4 099	4 101	4 101	4 108	4 131	4 135	4 142	4 149

EDMERP	2 981	2 988	2 990	2 990	2 992	2 993	3 000	3 016	3 018	3 020	3 026	3 036
EDIOS-PRG	362	362	362	362	362	362	362	362	362	362	362	362
CSR	53 850	53 892	53 974	54 175	54 218	54 217	54 250	54 387	54 795	54 949	55 052	55 178
CDI	1 947 452	1 949 991	1 955 483	1 968 060	1 971 285	1 974 509	1 977 738	1 980 818	2 000 402	2 063 832	2 081 618	2 093 605

Global counts on all catalogues in 2016

Catalogue	Jan-16	Feb-16	Mar-16	Apr-16	May-16	Jun-16	Jul-16	Aug-16	Sep-16	Oct-16	Nov-16	Dec-16
EDMO	3 671	3 670	3 686	3 691	3 695	3 712	3 730	3 733	3 747	3 758	3 775	3 791
EDMED	4 060	4 066	4 007	4 061	4 062	4 067	4 069	4 074	4 076	4 077	4 077	4 077
EDMERP	2 903	2 961	2 961	2 961	2 966	2 971	2 971	2 974	2 975	2 975	2 975	2 979
EDIOS-PRG	362	362	362	362	362	362	362	362	362	362	362	362
CSR	54 182	54 339	54 422	55 100	55 119	55 178	55 216	55 238	55 264	53 484	53 537	53 669
CDI	1 813 947	1 819 492	1 824 402	1 825 957	1 844 660	1 854 787	1 858 162	1 864 378	1 869 790	1 873 823	1 884 034	1 936 759

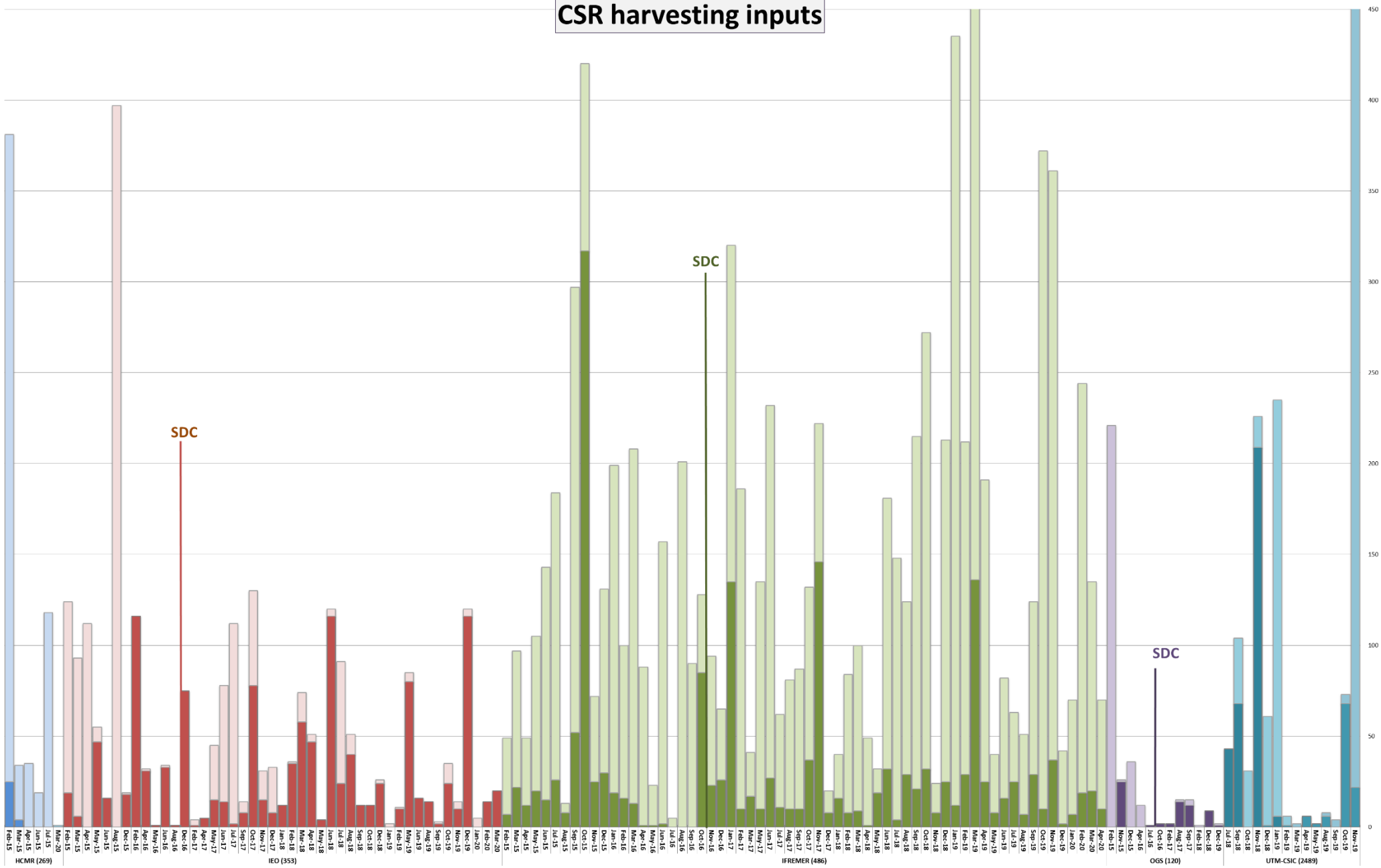
Global counts on all catalogues in 2015

Catalogue	Jan-15	Feb-15	Mar-15	Apr-15	May-15	Jun-15	Jul-15	Aug-15	Sep-15	Oct-15	Nov-15	Dec-15
EDMO	3 210	3 223	3 275	3 324	3 422	3 532	3 556	3 564	3 583	3 619	3 639	3 659
EDMED	3 980	3 982	3 984	3 984	3 990	3 992	4 014	4 034	4 053	4 055	4 054	4 060
EDMERP	2 858	2 866	2 878	2 878	2 886	2 898	2 900	2 900	2 901	2 903	2 903	2 903
EDIOS-PRG	360	360	361	361	361	361	361	361	362	362	362	362
CSR	52 977	53 028	53 238	53 304	53 400	53 463	53 553	53 602	53 836	53 938	54 057	54 135
CDI	1 714 285	1 721 708	1 721 604	1 720 724	1 709 958	1 764 762	1 767 715	1 779 199	1 784 327	1 796 791	1 800 648	1 809 541

Global counts on all catalogues in 2014

Catalogue	Jan-14	Feb-14	Mar-14	Apr-14	May-14	Jun-14	Jul-14	Aug-14	Sep-14	Oct-14	Nov-14	Dec-14
EDMO	2 451	2 467	2 651	2 685	2 688	2 692	2 693	2 701	2 875	3 103	3 199	3 212
EDMED	3 944	3 945	3 945	3 947	3 948	3 955	3 957	3 960	3 961	3 962	3 963	3 965
EDMERP	2 787	2 808	2 830	2 832	2 834	2 837	2 841	2 844	2 847	2 849	2 850	2 857
EDIOS-PRG	359	360	360	360	360	360	360	360	360	360	360	360
CSR	51 724	51 788	51 941	52 012	52 012	52 151	52 190	52 506	52 566	52 603	52 650	52 657
CDI	1 498 793	1 537 556	1 558 428	1 566 528	1 569 847	1 575 035	1 604 916	1 612 514	1 621 749	1 626 904	1 631 984	1 662 548

CSR harvesting inputs



■ updates ■ new

Global counts on all catalogues in 2012/2013

Catalogue	Sept-12	Oct-12	Nov-12	Dec-12	Jan-13	Feb-13	Mar-13	Apr-13	May-13	Aug-13	Sep-13	Oct-13	Nov-13	Dec-13
EDMO	2 261	2 283	2 296	2 304	2 330	2 351	2 359	2 362	2 370	2 384	2 404	2 404	2 423	2 431
EDMED	3 834	3 834	3 834	3 834	3 834	3 834	3 882	3 885	3 885	3 889	3 901	3 901	3 925	3 944
EDMERP	2 617	2 637	2 667	2 674	2 683	2 684	2 685	2 686	2 690	2 698	2 710	2 710	2 772	2 772
EDIOS-PRG	350	350	350	350	353	353	353	353	354	356	358	359	359	359
CSR	48 824	48 975	49 326	49 750	50 917	51 033	51 276	51 647	50 973	51 181	51 207	51 259	51 588	51 730
CDI	1 088 322	1 097 399	1 241 010	1 267 669	1 274 982	1 291 491	1 302 629	1 311 827	1 317 191	1 350 455	1 356 245	1 360 236	1 386 446	1 496 950