

September 2020 – SeaDataCloud catalogues follow-up

All documents used to write this report are available on the extranet of the project under [SeaDataCloud > Follow up](#).

Statistics on all catalogues

In September 2020, global increases on catalogues :

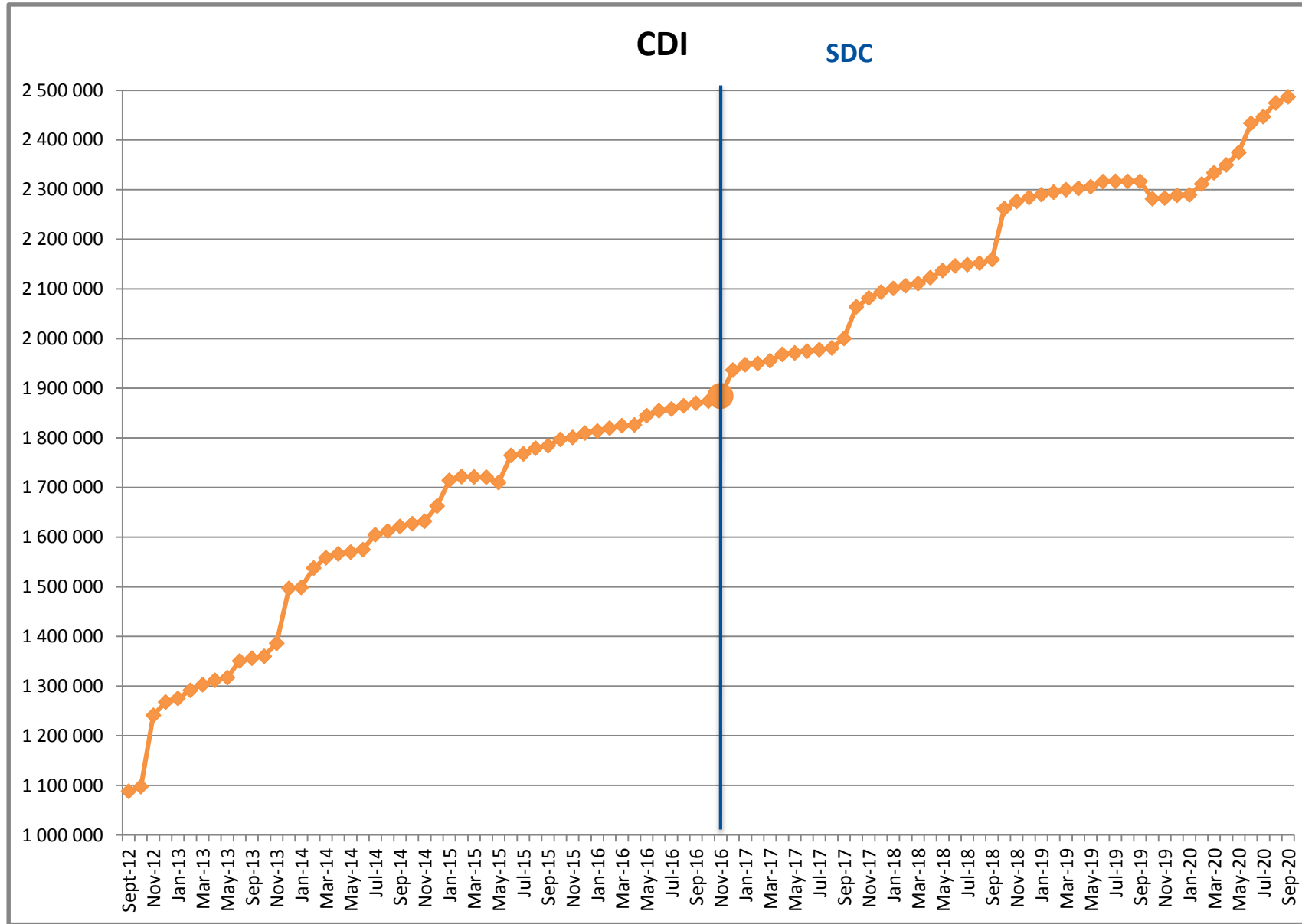
- **EDMO (Marine organisations)** : **+18** - Total : **4 349**
- **EDMED (Data sets)** : **+1** - Total : **4 250**
- **EDMERP (Projects)** : **+11** - Total : **3 289**
- **EDIOS-PRG**
 - Programmes : - Total : **370**
 - Series : **+1** - Total : **16 652**
- **CSR (Cruises)** : **+745** - Total : **60 159**
- **CDI (Data)** : **+12 345** - Total : **2 487 180**

Since the beginning of SeaDataCloud :

Catalogue	Sep-20	Aug-20	Jul-20	Jun-20	May-20	Apr-20	Mar-20	Feb-20	Jan-20	Dec-19	Nov-19	Oct-19	Oct-16	Increase*
EDMO	4 349	4 331	4 320	4 316	4 298	4 291	4 278	4 267	4 249	4 234	4 227	4 211	3 758	591
EDMED	4 250	4 249	4 247	4 245	4 234	4 232	4 228	4 227	4 225	4 223	4 213	4 210	4 077	173
EDMERP	3 289	3 278	3 254	3 239	3 205	3 190	3 177	3 170	3 166	3 164	3 163	3 159	2 975	314
EDIOS-PRG	370	370	370	370	370	370	370	370	368	367	367	367	362	8
EDIOS-Series	16 652	16 651	16 645	16 645	16 645	16 645	16 645	16 645	16 645	16 635	16 635	16 635	16 613	39
CSR	60 159	59 414	58 935	58 560	58 315	58 261	58 177	58 062	57 920	57 866	57 749	57 637	53 484	6 675
CDI	2 487 180	2 474 835	2 447 194	2 433 487	2 375 117	2 349 773	2 333 919	2 311 070	2 289 624	2 288 566	2 283 087	2 281 710	1 873 823	613 357

(*) Increase since beginning of SeaDataCloud (01/11/2016)

Nb of EDMO, EDMED, EDMERP, EDIOS, CSR and CDI per month

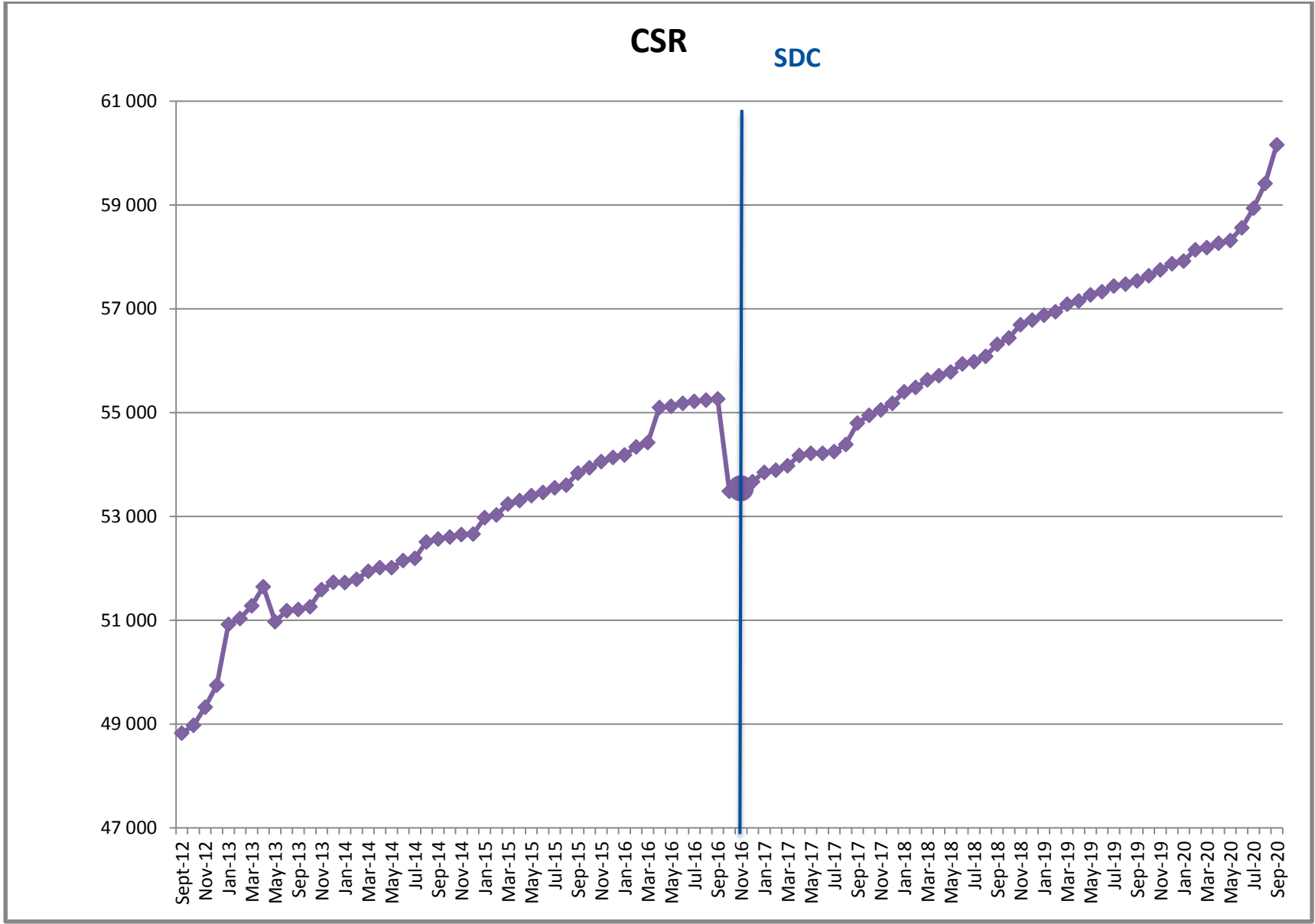


CSR

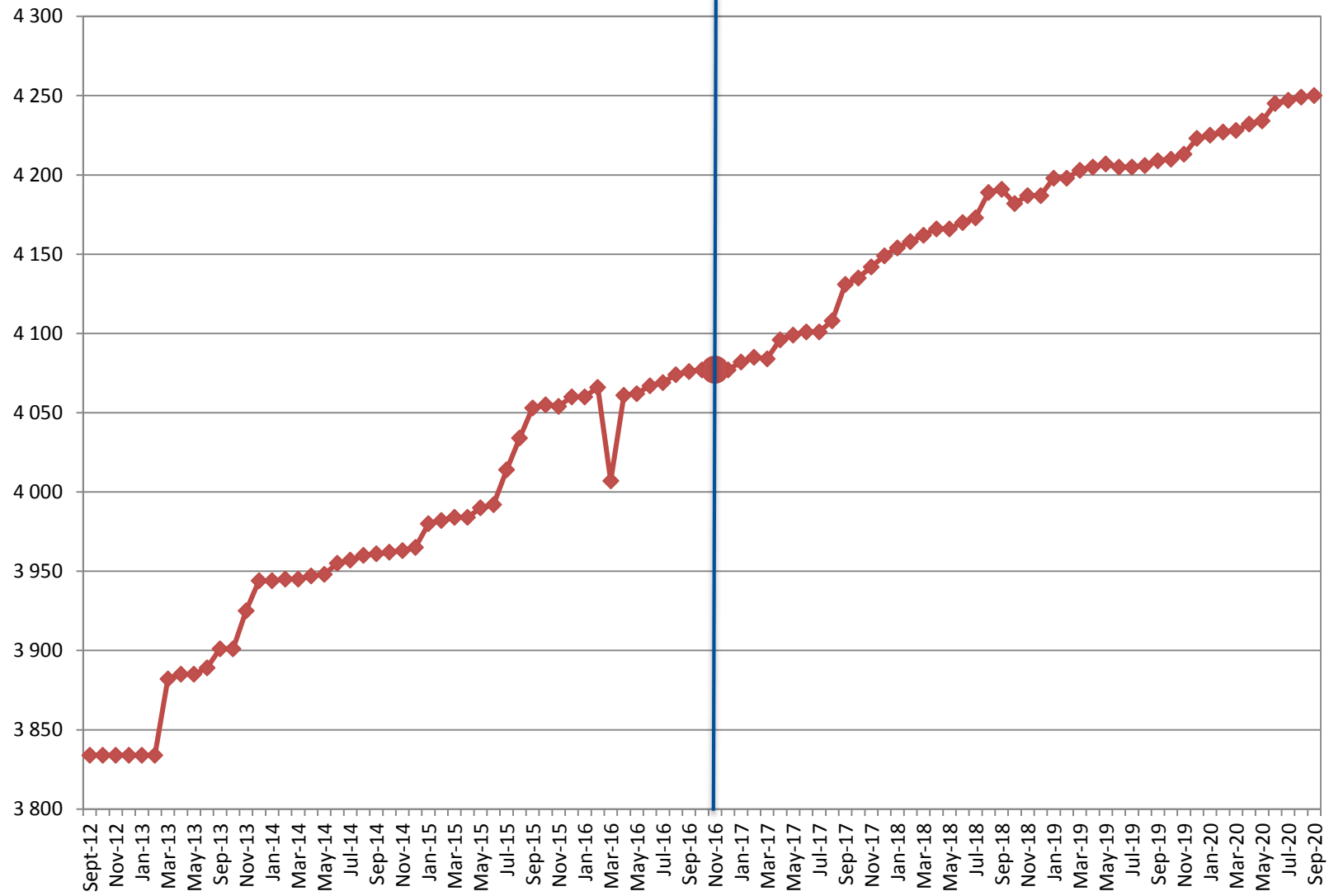
SDC

61 000
59 000
57 000
55 000
53 000
51 000
49 000
47 000

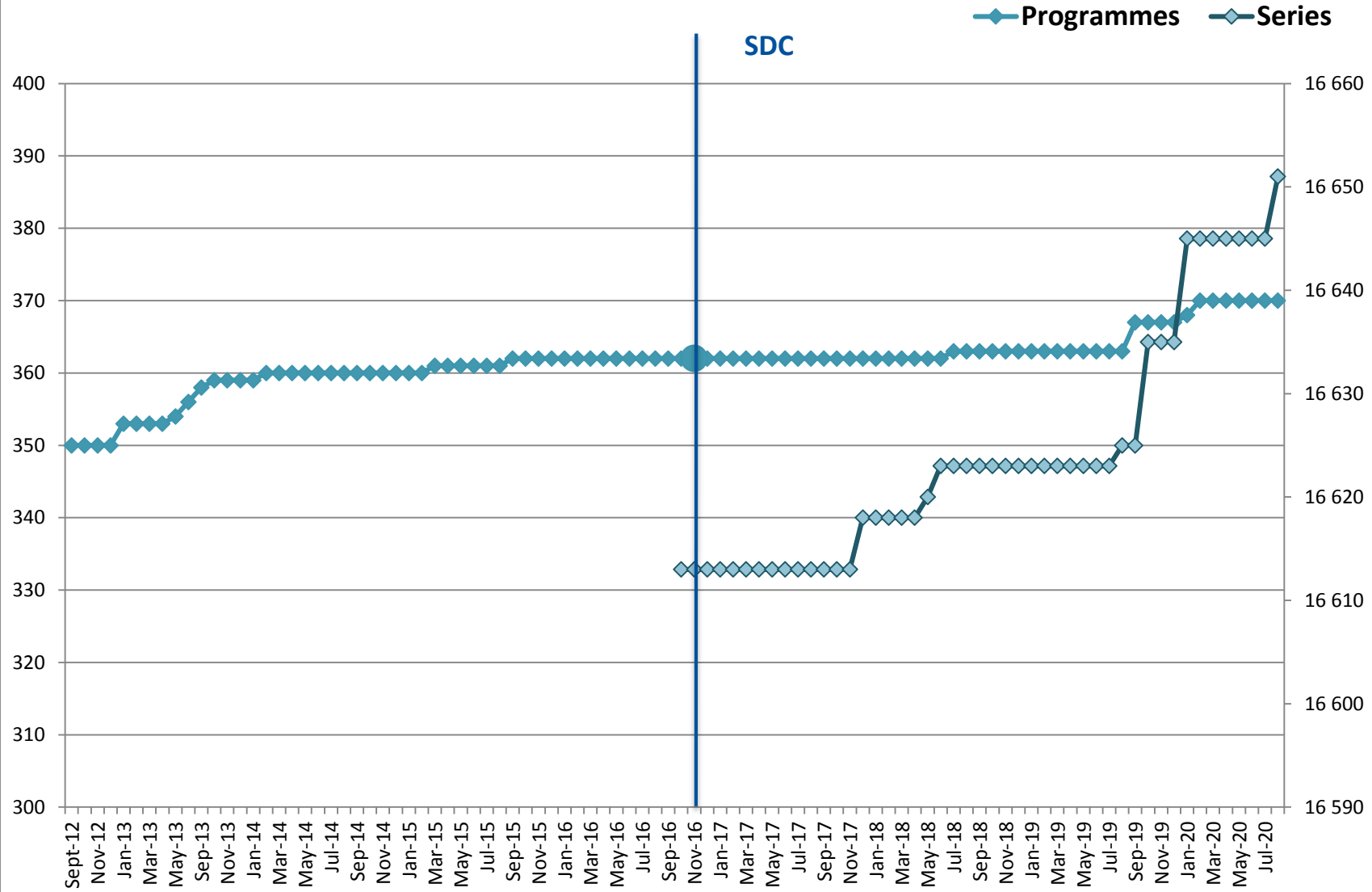
Sept-12 Nov-12 Jan-13 Mar-13 May-13 Sep-13 Nov-13 Jan-14 Mar-14 May-14 Jul-14 Sep-14 Nov-14 Jan-15 Mar-15 May-15 Jul-15 Sep-15 Nov-15 Jan-16 Mar-16 May-16 Jul-16 Sep-16 Nov-16 Jan-17 Mar-17 May-17 Jul-17 Sep-17 Nov-17 Jan-18 Mar-18 May-18 Jul-18 Sep-18 Nov-18 Jan-19 Mar-19 May-19 Jul-19 Sep-19 Nov-19 Jan-20 Mar-20 May-20 Jul-20 Sep-20



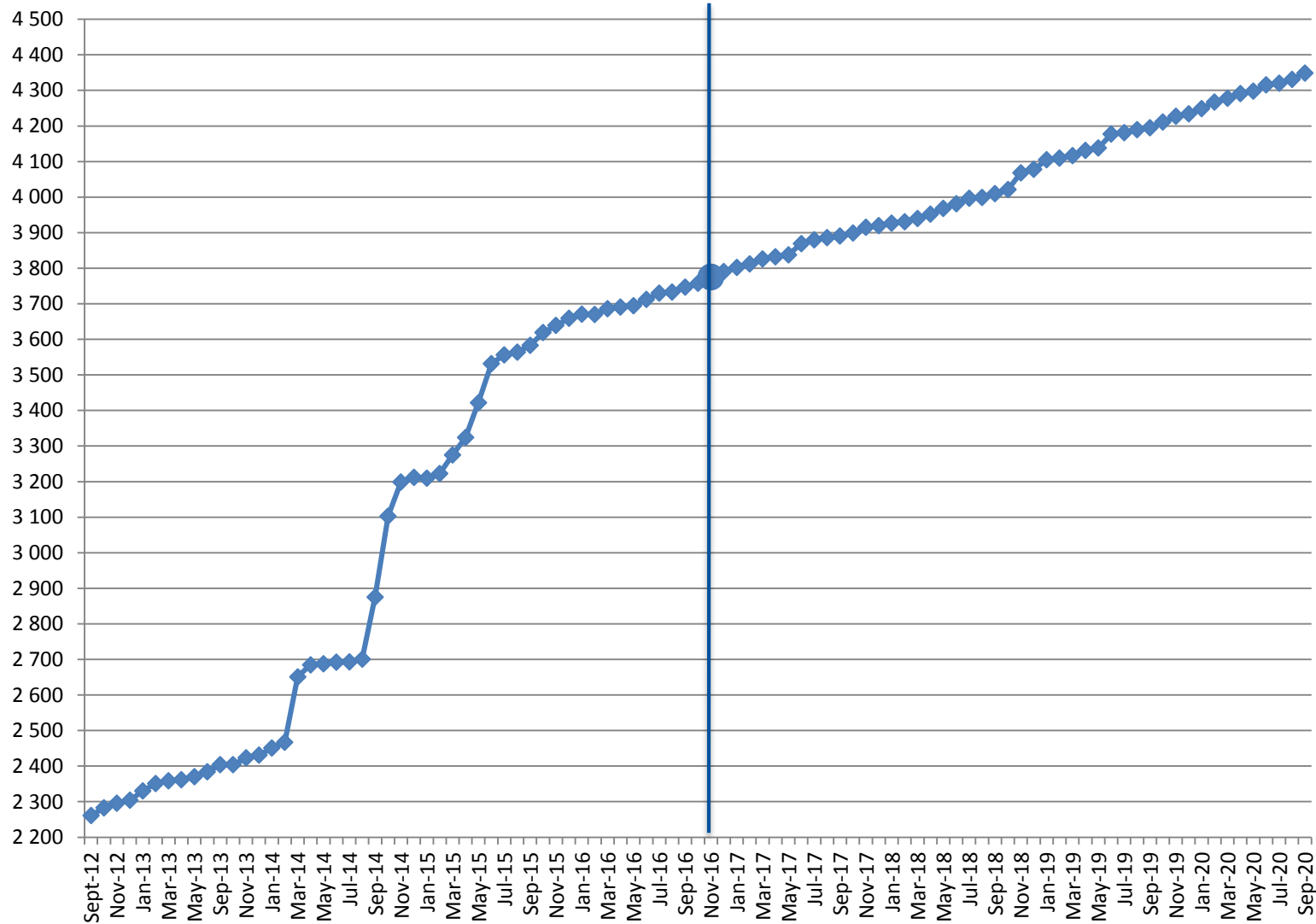
EDMED SDC



EDIOS



EDMO SDC



Statistics on CDI catalogue

Details of last month upgrades per partners are the following:

CDI partner	Country	Last increase as distributor	Last increase as custodian
AU	Denmark	+1 677	+1 677
BODC	United Kingdom	+6 926	+6 926
BSH	Germany	0	+125
ICES	Denmark	+1 392	0
IEO	Spain	+80	+3 118
IFREMER	France	-2 099	-5 137
IMBK	Montenegro	+2	+2
IMGW	Poland	0	+120
IO-BAS	Bulgaria	+2	+2
IOF	Croatia	+2	+2
IOLR	Israel	+31	+31
LHEI	Latvia	+565	+565
METU-IMS	Turkey	+433	+433
MI	Ireland	+1 013	+1 361
MRI	Iceland	+466	+466
MSI	Estonia	+42	+42
NIMRD	Romania	+85	+87
OGS	Italy	+792	+545
RBINS	Belgium	+355	+355
SHOM	France	+2	+2
TSU-DNA	Georgia	+16	+16
UkrSCES	Ukraine	+101	+101
TOTAL		+11 883	+10 839

- 20 SeaDataCloud partners (as distributor) had input or decrease data in the CDI catalogue, for a total increase of **+11 883 records**.
- 3 other partners, not in the SeaDataCloud consortium, have worked for a total increase of **462 records**.

There are 113 partners (as distributor) with CDIs :

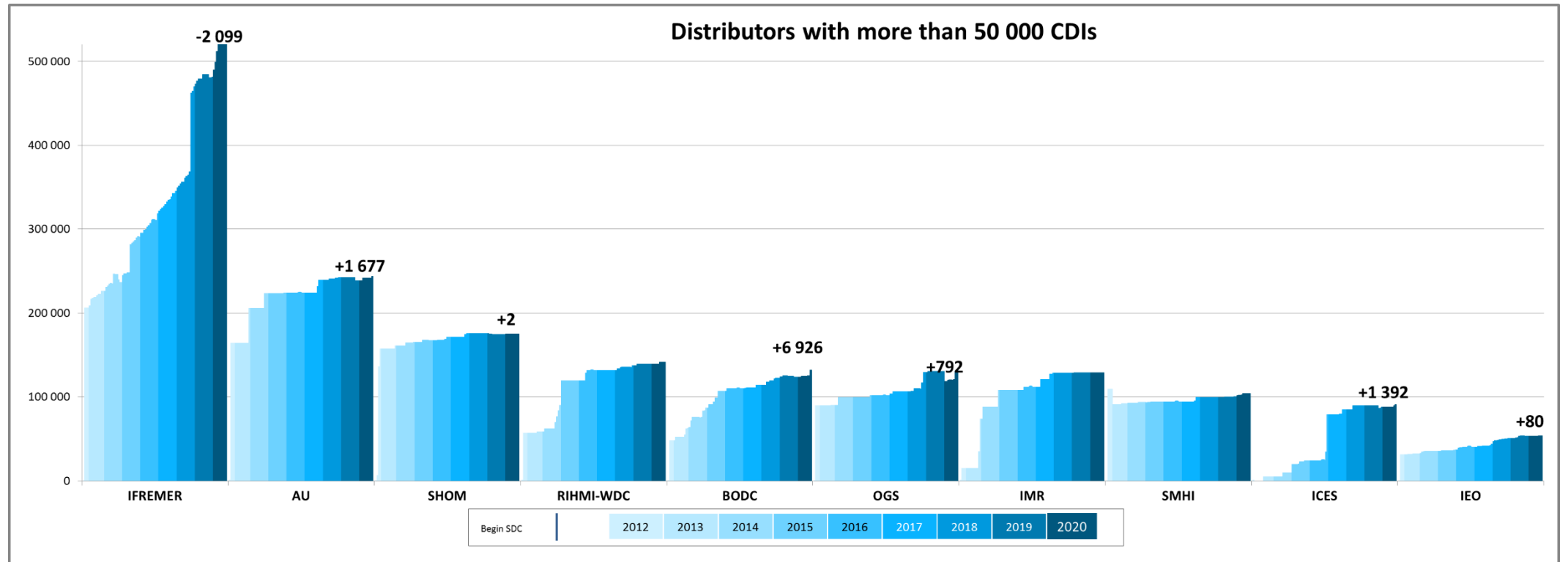
- 43 SeaDataCloud partners and
- 70 other partners.

Since the beginning of the follow-up reports (October 2012), the increase in CDI since start SDC (November 2016), between end SDN2 (September 2015) and start SDC, increase since SDN2, per partner, is the following: Note that for SMHI and SIO-RAS the negative increase since start SDN2 is due to the change in their time series management (SMHI), the change of data owner and the remove of incorrect records (SIO-RAS). The new owner is SOI, not in the SeaDataCloud consortium).

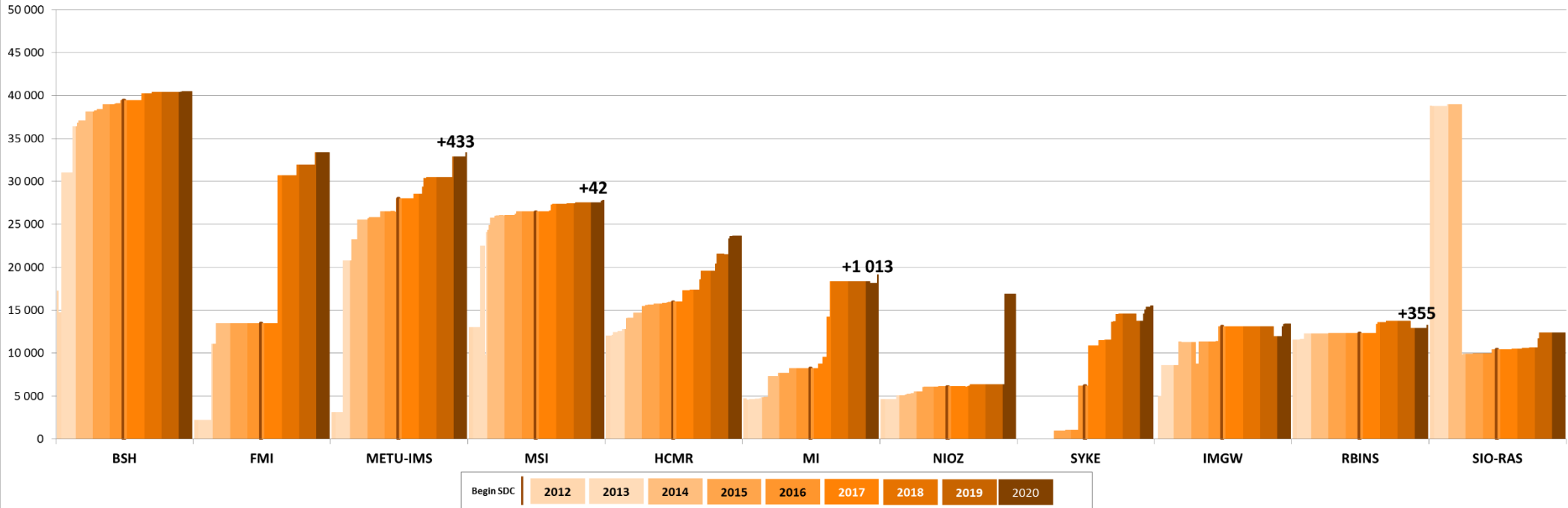
CDI partner	Name of partner	Country	Nb as distributor 05/10/2020	Nb as Custodian 05/10/2020	Increase as distributor since start SDC	Increase as custodian since start SDC	Increase as distributor between SDN2 and SDC	Increase as distributor since start SDN2
GEOMAR	Helmholtz Centre for Ocean Research Kiel	Germany	0	13 406	0	13 406	0 -	
IOPAN	IOPAN	Poland	18	18	0	0	0	18
CNRS/OSU-SBR	Roscoff Marine Station, Sorbonne Universités, UPMC Univ Paris 06 and CNRS	France	2	735	2	735	0	2
CNRS/MIO	CNRS/Mediterranean Institute of Oceanography-LUMINY (MIO)-UMR 7294/235/110	France	67	67	67	67	0	67
UTM-CSIC	UTM-CSIC/Marine Technology Unit	Spain	582	603	576	597	0	582
CNR	CNR - Institute of Atmospheric Sciences and Climate (ISAC) (Rome)	Italy	874	874	621	621	0	874
INSTM	Institut National des Sciences et Technologies de la Mer	Tunisia	973	973	4	4	0	973
IMBK	Institute of Marine Biology (IMBK)	Montenegro	982	990	276	284	647	960
TSU-DNA	Iv.Javakhishvili Tbilisi State University	Georgia	1 161	1 164	209	212	34	266
UOM	University Of Malta	Malta	1 922	1 922	897	897	393	1 294
IOF	Institute of Oceanography and Fisheries	Croatia	2 968	2 968	735	735	490	1 392
ORION	ORION Joint Research and Development Center	Cyprus	3 593	3 594	3 593	3 594	0	3 593
VLIZ	Flanders Marine Institute	Belgium	3 779	3 779	207	207	74	2 160
LHEI	Latvian Institute of Aquatic Ecology	Latvia	3 813	4 122	329	638	536	3 506
CNRS/OASU	Aquitaine Observatory of Sciences of the Universe - University of Bordeaux (OASU)	France	3 913	3 913	3 913	3 913	6	3 913
IO-BAS	Bulgarian National Oceanographic Data Centre(BGODC)	Bulgaria	4 792	6 204	1 313	2 725	273	2 484
UkrSCES	Ukrainian scientific center of Ecology of Sea (UkrSCES)	Ukraine	6 440	6 440	796	796	267	6 440
IHPT	IHPT, Hydrographic institute	Portugal	6 583	6 583	250	250	1 713	5 678
IOLR	Israel Oceanographic and Limnological Research (IOLR)	Israel	8 073	8 073	2 341	2 341	333	3 000
NIMRD	National Institute for Marine Research and Development Grigore Antipa	Romania	8 522	8 747	1 632	1 857	602	4 268
NIB	National Institute of Biology - NIBMarine Biology Station	Slovenia	8 908	8 908	1 246	1 246	287	4 788
MRI	Marine Research Institute (MRI)	Iceland	8 977	8 977	3 063	3 063	0	5 153

ENEA	ENEA Centro Ricerche Ambiente Marino - La Spezia	Italy	9 887	9 887	798	798	284	1 813
SIO-RAS	P.P.Shirshov Institute of Oceanology-RAS	Russian Federation	12 384	12 384	1 943	1 943	482	-26 439
RBINS	Royal Belgian Institute of Natural Sciences	Belgium	13 268	13 268	939	939	0	1 735
IMGW	Instytut Meteorologii i Gosodarki Wodnej	Poland	13 420	13 540	310	430	1 770	13 420
SYKE	Finnish Environment Institute	Finland	15 513	15 904	9 306	9 697	5 162	15 513
NIOZ	NIOZ Royal Netherlands Institute for Sea Research	Netherlands	16 896	6 340	10 766	210	46	12 267
MI	Marine Institute	Ireland	19 136	28 693	10 887	20 444	0	14 435
HCMR	Hellenic Centre for Marine Research	Greece	23 657	26 020	7 668	10 031	260	11 633
MSI	Marine Systems Institute at Tallinn University of Technology	Estonia	27 774	27 665	1 300	1 191	-3	14 777
METU-IMS	Institute of Marine Sciences, Middle East Technical University	Turkey	33 333	33 396	5 316	5 379	2 222	30 251
FMI	Finnish Meteorological Institute	Finland	33 351	36 774	19 851	23 274	0	31 140
BSH	German Oceanographic Datacentre (NODC)	Germany	40 482	105 665	1 035	66 218	465	23 204
IEO	IEO/Spanish Oceanographic Institute	Spain	53 897	63 868	13 541	23 512	4 265	22 482
ICES	International Council for the Exploration of the Sea (ICES)	Denmark	91 079	89 921	66 908	65 750	369	91 079
SMHI	Swedish Meteorological and Hydrological Institute	Sweden	104 343	106 216	10 057	11 930	0	-5 184
IMR	Institute of Marine Research - Norwegian Marine Data Centre (NMD)	Norway	129 022	134 890	17 385	23 253	3 808	114 229
OGS	OGS (Istituto Nazionale di Oceanografia e di Geofisica Sperimentale)	Italy	131 662	118 634	30 115	17 087	1 922	42 064
BODC	British Oceanographic Data Centre	United Kingdom	132 007	210 976	22 004	100 973	2 973	83 950
RIHMI-WDC	All-Russia Research Institute of Hydrometeorological Information - World Data Centre	Russian Federation	141 756	141 756	10 424	10 424	12 003	84 631
SHOM	Shom	France	175 038	192 105	3 704	20 771	3 754	168 615
AU	Aarhus University	Denmark	243 783	244 153	19 828	20 198	609	79 629
IFREMER	IFREMER / IDM/SISMER	France	639 488	436 800	328 731	126 043	24 240	433 289
		TOTAL	2 178 118	2 161 915	614 886	598 683	70 286	1 309 944

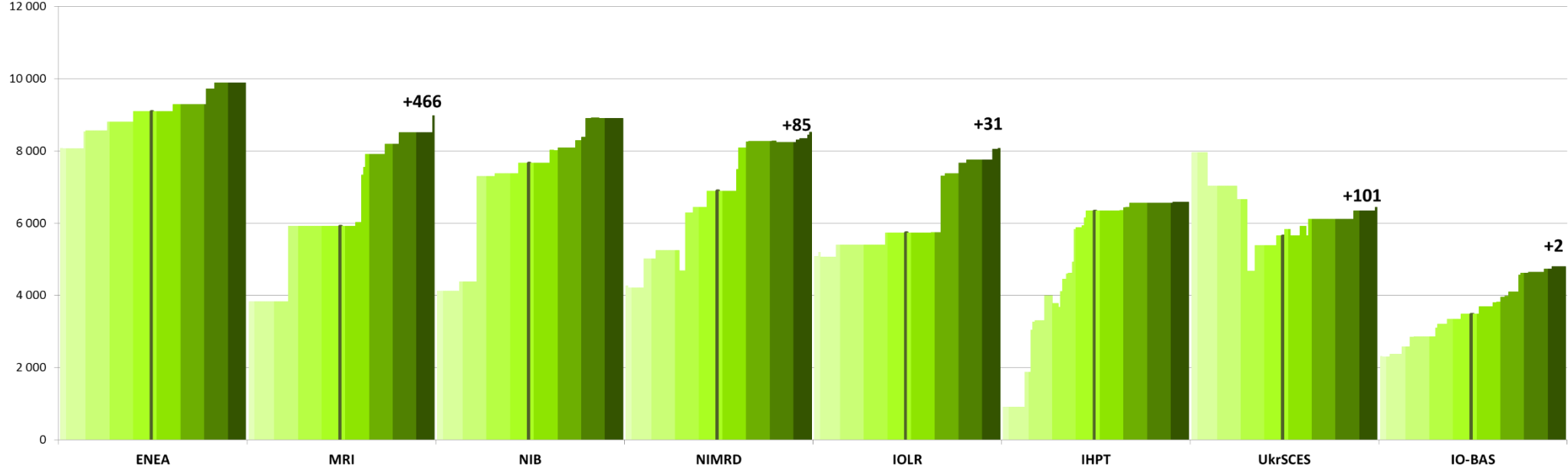
CDIs number per month and per distributors



Distributors with 10 000 < CDIs < 50 000

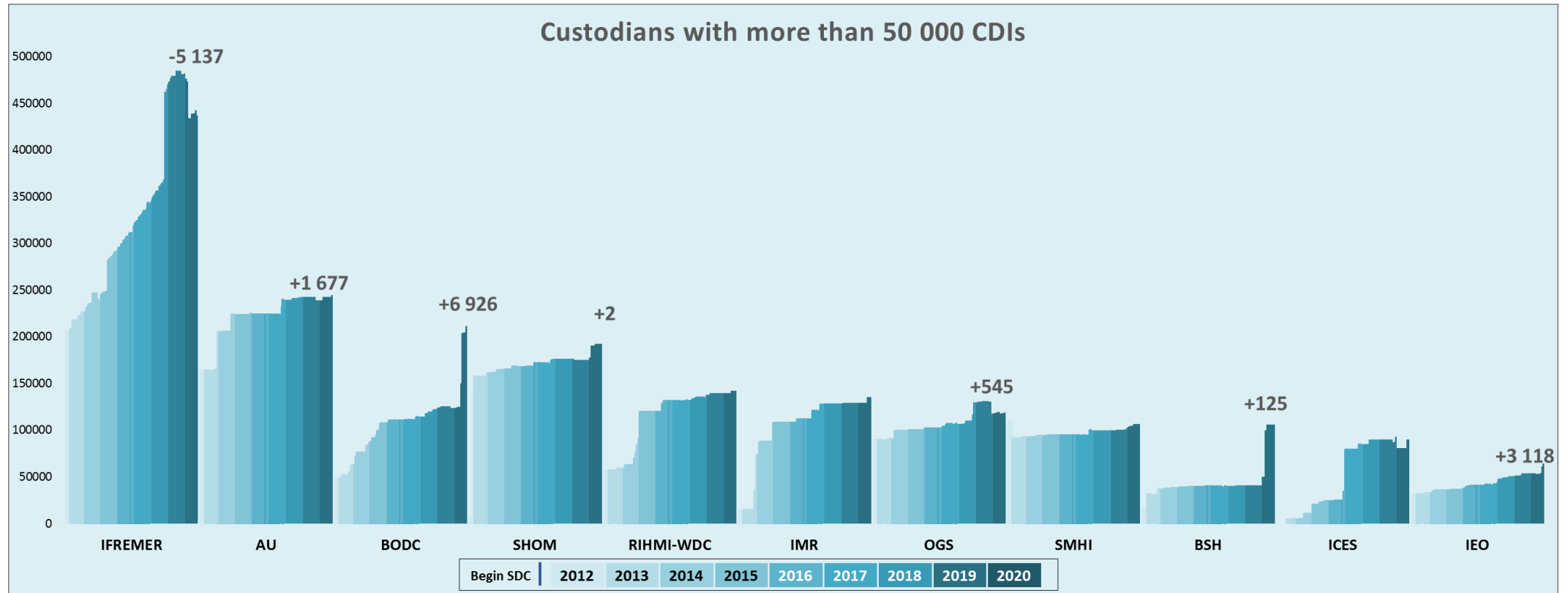


Distributors with 4 000 < CDI entries < 10 000

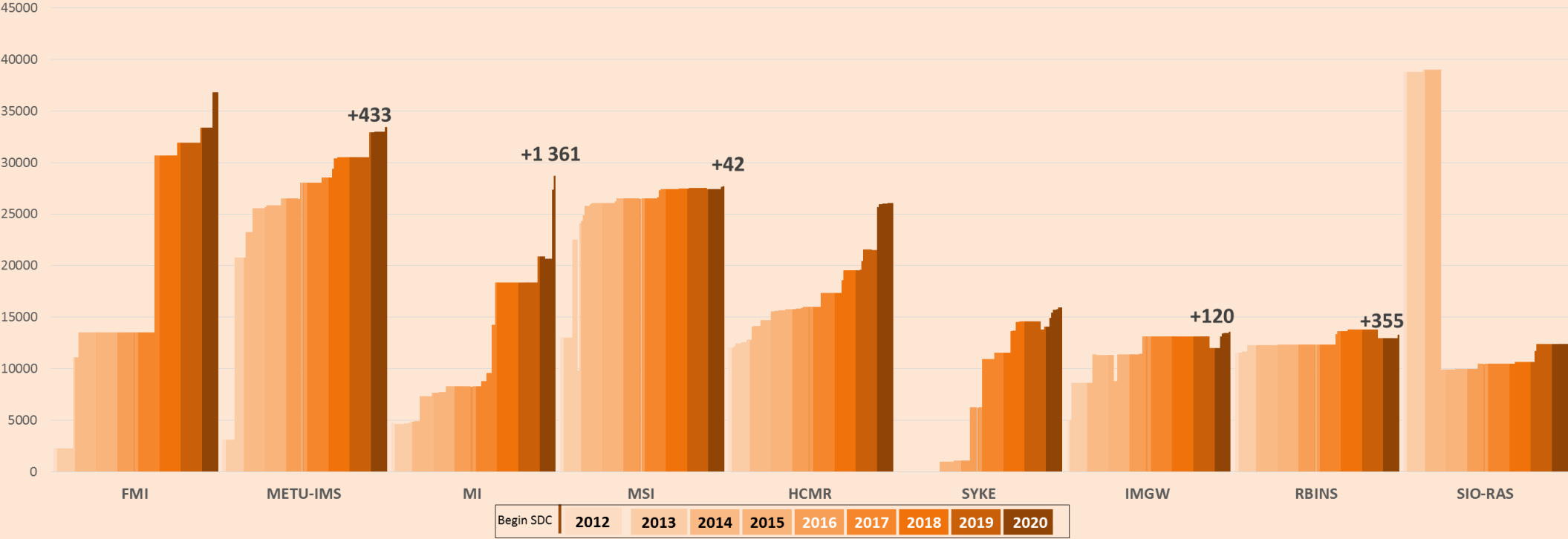


Begin SDC	2012	2013	2014	2015	2016	2017	2018	2019	2020
-----------	------	------	------	------	------	------	------	------	------

CDIs number per month and per custodians



Custodians with 10 000 < CDIs < 50 000



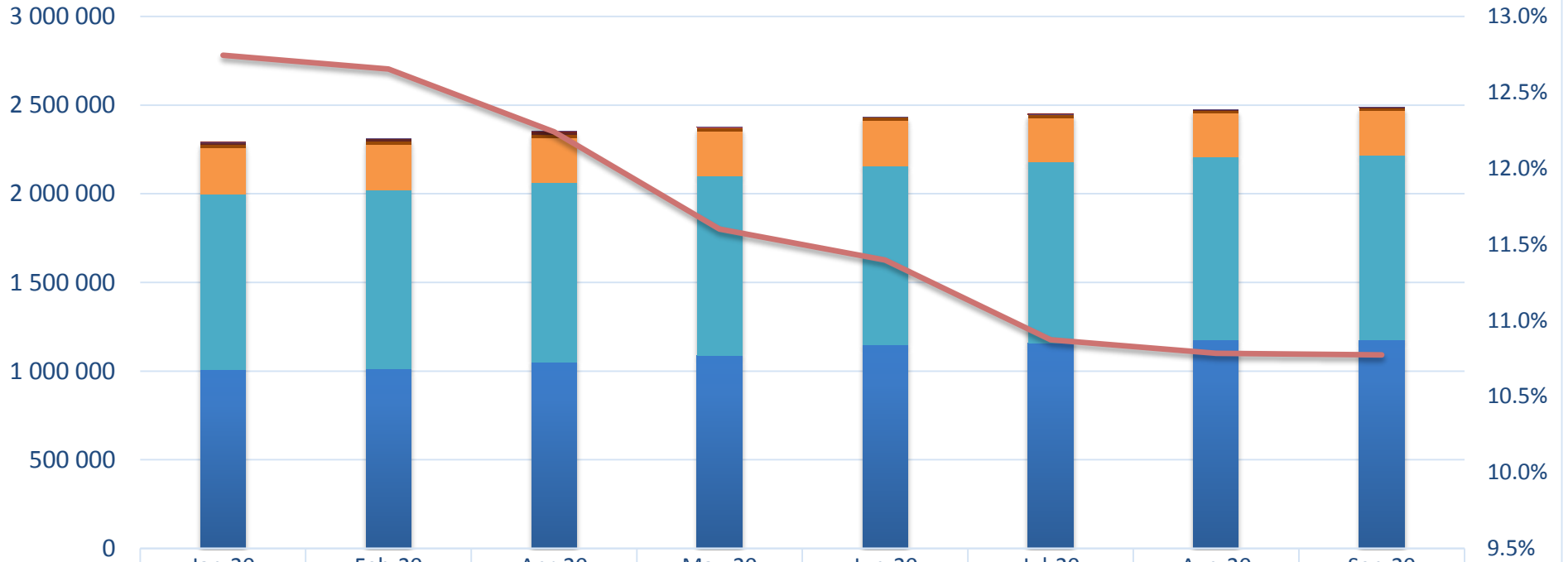
Custodians with 3 000 < CDI entries < 10 000



CDIs number per acces type

Since January, the number of CDIs with restricted access decrease from 291 820 CDIs to 267 949 CDIs : 23 871 less.

Number of Restricted data per Acces type



	Jan-20	Feb-20	Apr-20	May-20	Jun-20	Jul-20	Aug-20	Sep-20
commercial charge	110	110	110	110	110	108	108	108
organisation	247	246	246	246	246	246	246	246
moratorium	828	828	828	781	781	493	493	493
licence	847	848	847	847	847	720	720	720
no access	11 814	12 781	12 884	2 135	2 135	2 135	2 069	2 069
academic	18 427	18 427	18 427	18 344	18 344	17 567	17 355	17 393
by negotiation	259 547	259 206	254 304	253 067	254 911	244 823	245 897	246 920
SeaDataNet licence	992 762	1 003 549	1 012 089	1 010 855	1 010 303	1 023 690	1 034 912	1 044 059
unrestricted	1 005 042	1 015 075	1 050 038	1 088 732	1 145 810	1 157 412	1 173 035	1 175 172
% of restricted	12.75%	12.65%	12.24%	11.60%	11.40%	10.87%	10.78%	10.77%

Statistics on CSR harvesting

The CSR automatic harvesting result for this month is 692 new records and 469 updates .

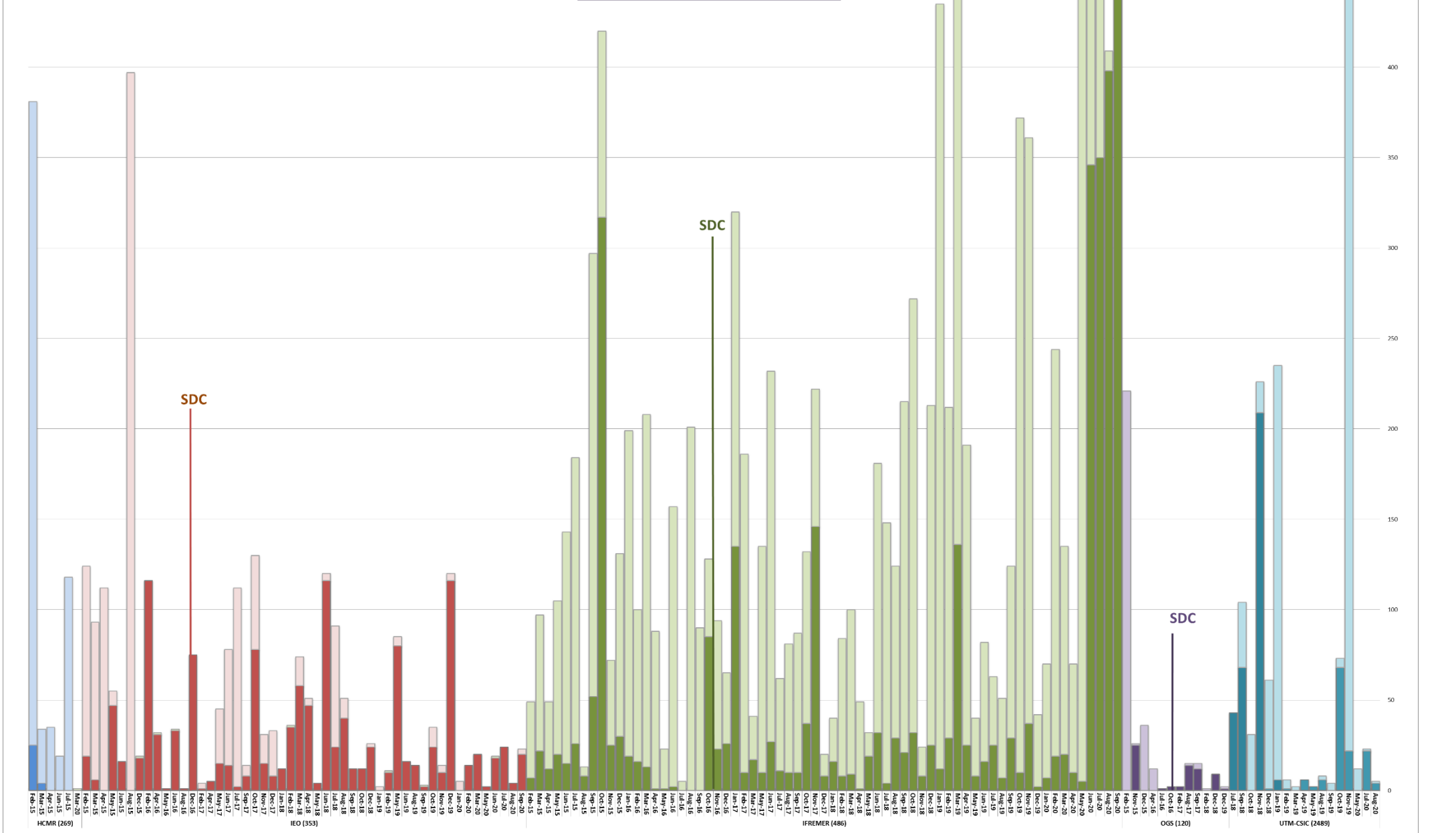
Details of harvesting per centre are the following:

Centre	Date	New	Update
IFREMER (486)	01/09/2020		4
IEO (353)	08/09/2020	16	
IFREMER (486)	08/09/2020	2	
IEO (353)	15/09/2020	4	
IFREMER (486)	15/09/2020	669	100
IEO (353)	22/09/2020		2
IFREMER (486)	22/09/2020		269
IEO (353)	29/09/2020		1
IFREMER (486)	29/09/2020	1	93
Total		692	469

OGS and HCMR had no CSR creations or updates during this month.

The graph below shows the CSR harvesting inputs since beginning of 2015:

CSR harvesting inputs



■ updates
 ■ new

History

Global counts on all catalogues in 2019

Catalogue	Jan-19	Feb-19	Mar-19	Apr-19	May-19	Jun-19	Jul-19	Aug-19	Sep-19	Oct-19	Nov-19	Dec-19
EDMO	4 105	4 110	4 117	4 131	4 138	4 177	4 181	4 190	4 195	4 211	4 227	4 234
EDMED	4 198	4 198	4 203	4 205	4 207	4 205	4 205	4 206	4 209	4 210	4 213	4 223
EDMERP	3 125	3 128	3 133	3 133	3 135	3 138	3 144	3 144	3 149	3 159	3 163	3 164
EDIOS-PRG	363	363	363	363	363	363	363	363	367	367	367	367
CSR	56 877	56 943	57 089	57 148	57 267	57 331	57 437	57 474	57 537	57 637	57 749	57 866
CDI	2 289 929	2 294 771	2 299 924	2 302 286	2 306 093	2 316 223	2 316 610	2 316 610	2 316 610	2 281 710	2 283 087	2 288 566

Global counts on all catalogues in 2018

Catalogue	Jan-18	Feb-18	Mar-18	Apr-18	May-18	Jun-18	Jul-18	Aug-18	Sep-18	Oct-18	Nov-18	Dec-18
EDMO	3 927	3 931	3 940	3 952	3 968	3 981	3 997	3 999	4 010	4 021	4 068	4 078
EDMED	4 154	4 158	4 162	4 166	4 166	4 170	4 173	4 189	4 191	4 182	4 187	4 187
EDMERP	3 042	3 048	3 051	3 054	3 058	3 062	3 068	3 071	3 073	3 083	3 105	3 106
EDIOS-PRG	362	362	362	362	362	362	363	363	363	363	363	363
CSR	55 399	55 485	55 630	55 709	55 783	55 937	55 982	56 085	56 316	56 436	56 694	56 783
CDI	2 101 090	2 106 680	2 110 688	2 122 824	2 137 067	2 146 266	2 148 856	2 152 074	2 159 216	2 262 108	2 276 264	2 283 986

Global counts on all catalogues in 2017

Catalogue	Jan-17	Feb-17	Mar-17	Apr-17	May-17	Jun-17	Jul-17	Aug-17	Sep-17	Oct-17	Nov-17	Dec-17
EDMO	3 802	3 812	3 826	3 832	3 838	3 869	3 880	3 886	3 891	3 899	3 915	3 920
EDMED	4 082	4 085	4 084	4 096	4 099	4 101	4 101	4 108	4 131	4 135	4 142	4 149
EDMERP	2 981	2 988	2 990	2 990	2 992	2 993	3 000	3 016	3 018	3 020	3 026	3 036
EDIOS-PRG	362	362	362	362	362	362	362	362	362	362	362	362
CSR	53 850	53 892	53 974	54 175	54 218	54 217	54 250	54 387	54 795	54 949	55 052	55 178
CDI	1 947 452	1 949 991	1 955 483	1 968 060	1 971 285	1 974 509	1 977 738	1 980 818	2 000 402	2 063 832	2 081 618	2 093 605

Global counts on all catalogues in 2016

Catalogue	Jan-16	Feb-16	Mar-16	Apr-16	May-16	Jun-16	Jul-16	Aug-16	Sep-16	Oct-16	Nov-16	Dec-16
EDMO	3 671	3 670	3 686	3 691	3 695	3 712	3 730	3 733	3 747	3 758	3 775	3 791
EDMED	4 060	4 066	4 007	4 061	4 062	4 067	4 069	4 074	4 076	4 077	4 077	4 077
EDMERP	2 903	2 961	2 961	2 961	2 966	2 971	2 971	2 974	2 975	2 975	2 975	2 979
EDIOS-PRG	362	362	362	362	362	362	362	362	362	362	362	362
CSR	54 182	54 339	54 422	55 100	55 119	55 178	55 216	55 238	55 264	53 484	53 537	53 669
CDI	1 813 947	1 819 492	1 824 402	1 825 957	1 844 660	1 854 787	1 858 162	1 864 378	1 869 790	1 873 823	1 884 034	1 936 759

Global counts on all catalogues in 2015

Catalogue	Jan-15	Feb-15	Mar-15	Apr-15	May-15	Jun-15	Jul-15	Aug-15	Sep-15	Oct-15	Nov-15	Dec-15
EDMO	3 210	3 223	3 275	3 324	3 422	3 532	3 556	3 564	3 583	3 619	3 639	3 659
EDMED	3 980	3 982	3 984	3 984	3 990	3 992	4 014	4 034	4 053	4 055	4 054	4 060
EDMERP	2 858	2 866	2 878	2 878	2 886	2 898	2 900	2 900	2 901	2 903	2 903	2 903
EDIOS-PRG	360	360	361	361	361	361	361	361	362	362	362	362
CSR	52 977	53 028	53 238	53 304	53 400	53 463	53 553	53 602	53 836	53 938	54 057	54 135
CDI	1 714 285	1 721 708	1 721 604	1 720 724	1 709 958	1 764 762	1 767 715	1 779 199	1 784 327	1 796 791	1 800 648	1 809 541

Global counts on all catalogues in 2014

Catalogue	Jan-14	Feb-14	Mar-14	Apr-14	May-14	Jun-14	Jul-14	Aug-14	Sep-14	Oct-14	Nov-14	Dec-14
EDMO	2 451	2 467	2 651	2 685	2 688	2 692	2 693	2 701	2 875	3 103	3 199	3 212
EDMED	3 944	3 945	3 945	3 947	3 948	3 955	3 957	3 960	3 961	3 962	3 963	3 965
EDMERP	2 787	2 808	2 830	2 832	2 834	2 837	2 841	2 844	2 847	2 849	2 850	2 857
EDIOS-PRG	359	360	360	360	360	360	360	360	360	360	360	360
CSR	51 724	51 788	51 941	52 012	52 012	52 151	52 190	52 506	52 566	52 603	52 650	52 657
CDI	1 498 793	1 537 556	1 558 428	1 566 528	1 569 847	1 575 035	1 604 916	1 612 514	1 621 749	1 626 904	1 631 984	1 662 548

Global counts on all catalogues in 2012/2013

Catalogue	Sept-12	Oct-12	Nov-12	Dec-12	Jan-13	Feb-13	Mar-13	Apr-13	May-13	Aug-13	Sep-13	Oct-13	Nov-13	Dec-13
EDMO	2 261	2 283	2 296	2 304	2 330	2 351	2 359	2 362	2 370	2 384	2 404	2 404	2 423	2 431
EDMED	3 834	3 834	3 834	3 834	3 834	3 834	3 882	3 885	3 885	3 889	3 901	3 901	3 925	3 944
EDMERP	2 617	2 637	2 667	2 674	2 683	2 684	2 685	2 686	2 690	2 698	2 710	2 710	2 772	2 772
EDIOS-PRG	350	350	350	350	353	353	353	353	354	356	358	359	359	359
CSR	48 824	48 975	49 326	49 750	50 917	51 033	51 276	51 647	50 973	51 181	51 207	51 259	51 588	51 730
CDI	1 088 322	1 097 399	1 241 010	1 267 669	1 274 982	1 291 491	1 302 629	1 311 827	1 317 191	1 350 455	1 356 245	1 360 236	1 386 446	1 496 950

