

# May 2023 – SeaDataNet catalogues follow-up

All documents used to write this report are available on the extranet of the project under [SeaDataCloud > Follow up](#).

In May 2023, global increases on catalogues :

- **EDMO (Marine organisations)** : **+22** - Total : **4 785**
- **EDMED (Data sets)** : **+1** - Total : **4 332**
- **EDMERP (Projects)** : **+8** - Total : **3 442**
- **EDIOS-PRG**
  - Programmes : - Total : **372**
  - Series : - Total : **17 020**
- **CSR (Cruises)** : **+131** - Total : **66 264**
- **CDI (Data)** : **+5 860** - Total : **2 880 666**

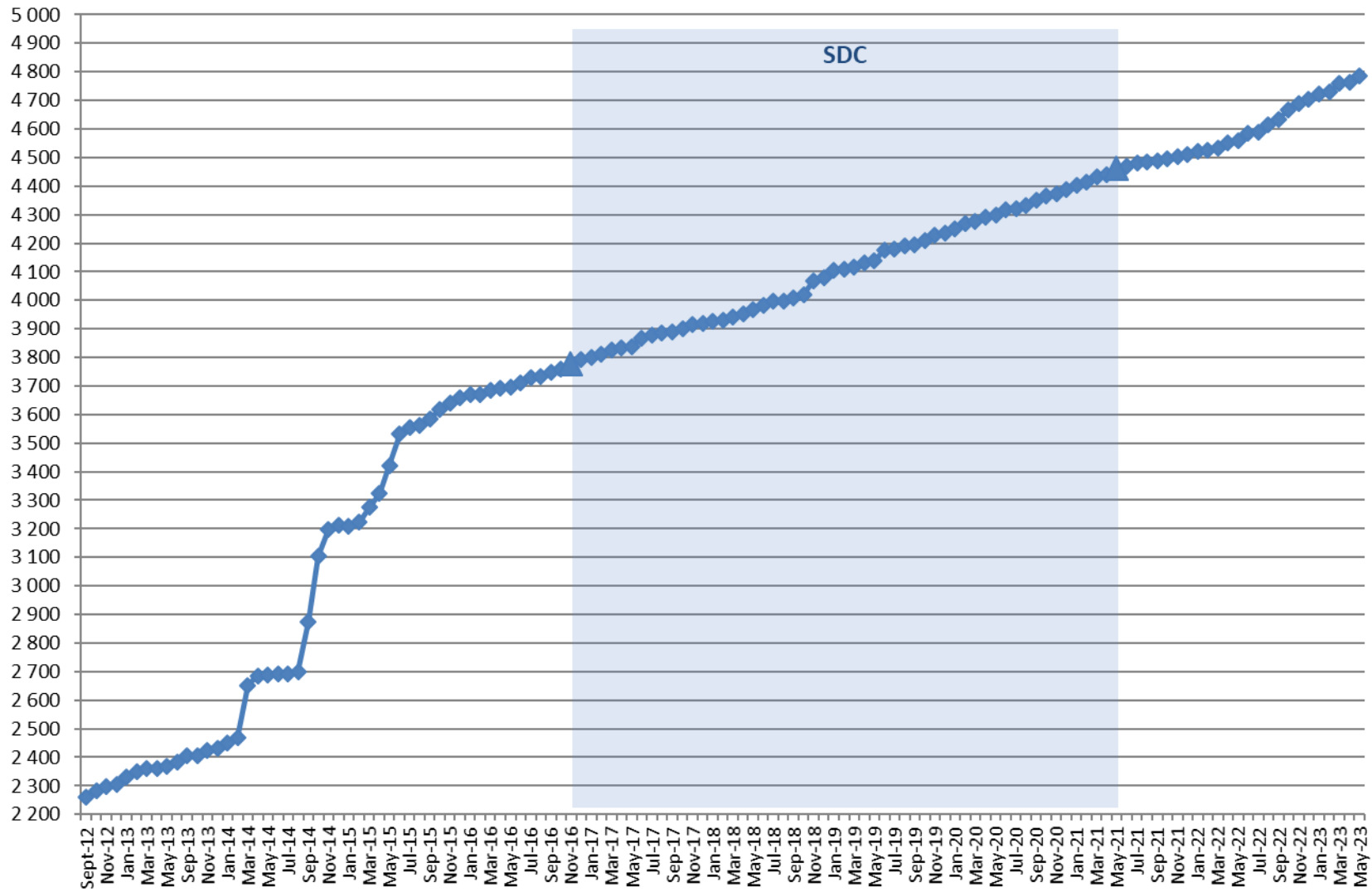
## Since the beginning of SeaDataCloud :

Catalogue	May-23	Apr-23	Mar-23	Feb-23	Jan-23	Dec-22	Nov-22	Oct-22	Sep-22	Aug-22	Jul-22	Jun-22	Oct-16	Increase*
<b>EDMO</b>	<b>4 785</b>	4 763	4 758	4 731	4 723	4 703	4 691	4 667	4 634	4 616	4 588	4 584	<b>3 758</b>	<b>1 027</b>
<b>EDMED</b>	<b>4 332</b>	4 331	4 328	4 328	4 327	4 324	4 322	4 321	4 309	4 309	4 307	4 306	<b>4 077</b>	<b>255</b>
<b>EDMERP</b>	<b>3 442</b>	3 434	3 433	3 431	3 427	3 423	3 413	3 406	3 401	3 397	3 395	3 374	<b>2 975</b>	<b>467</b>
<b>EDIOS-PRG</b>	<b>372</b>	372	372	372	372	372	372	372	372	372	371	371	<b>362</b>	<b>10</b>
<b>EDIOS-Series</b>	<b>17 020</b>	17 020	17 020	17 020	17 020	17 020	17 020	16 667	16 667	16 667	16 666	16 666	<b>16 613</b>	<b>407</b>
<b>CSR</b>	<b>66 264</b>	66 133	66 049	65 804	65 231	64 363	64 141	63 032	62 512	62 226	62 096	61 820	<b>53 484</b>	<b>12 780</b>
<b>CDI</b>	<b>2 880 666</b>	2 874 806	2 865 680	2 851 301	2 837 353	2 831 011	2 826 367	2 819 264	2 813 360	2 806 350	2 801 184	2 777 414	<b>1 873 823</b>	<b>1 006 843</b>

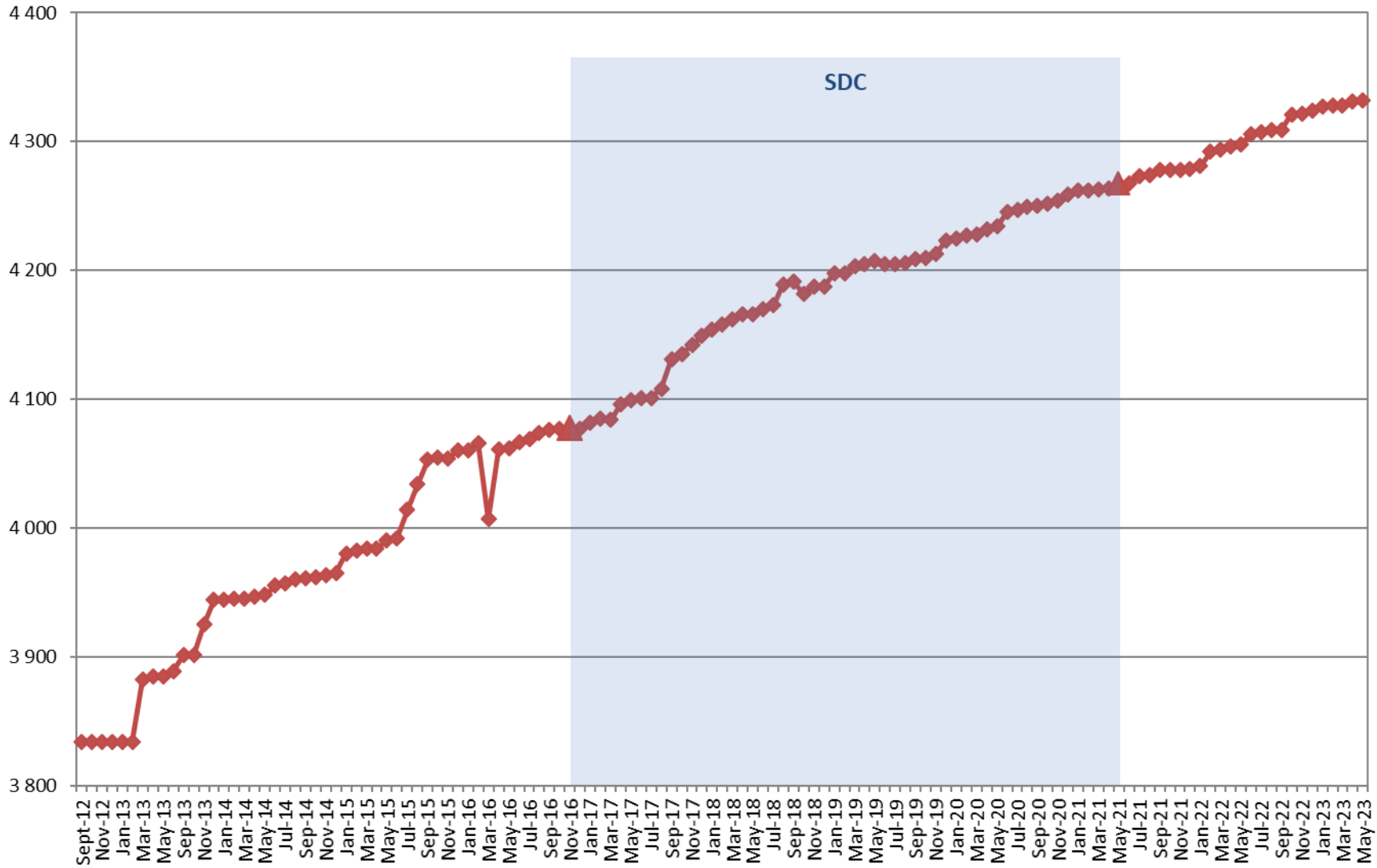
(\*) Increase since beginning of SeaDataCloud (01/11/2016)

# Nb of EDMO, EDMED, EDMERP, EDIOS, CSR and CDI per month

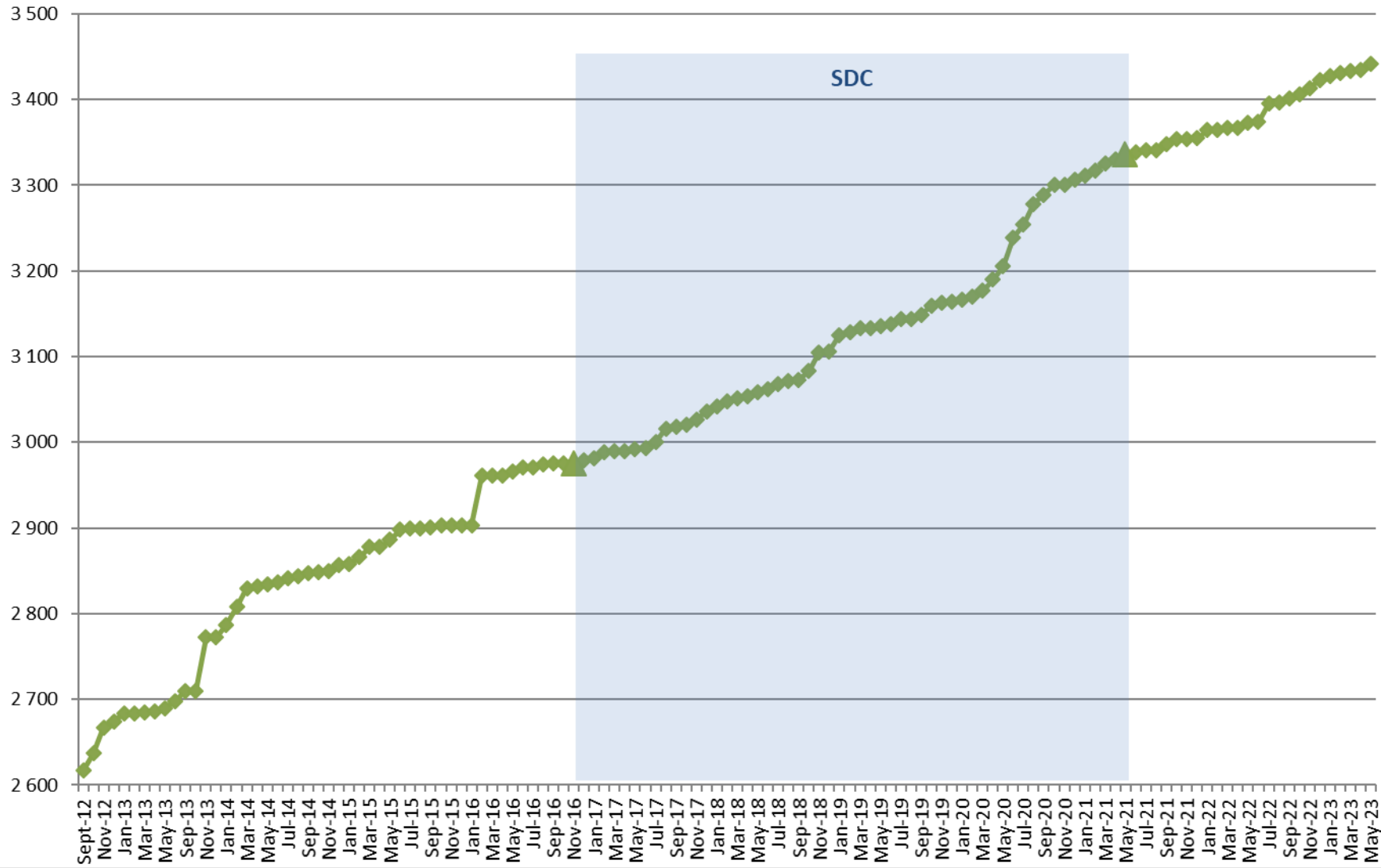
## EDMO



# EDMED

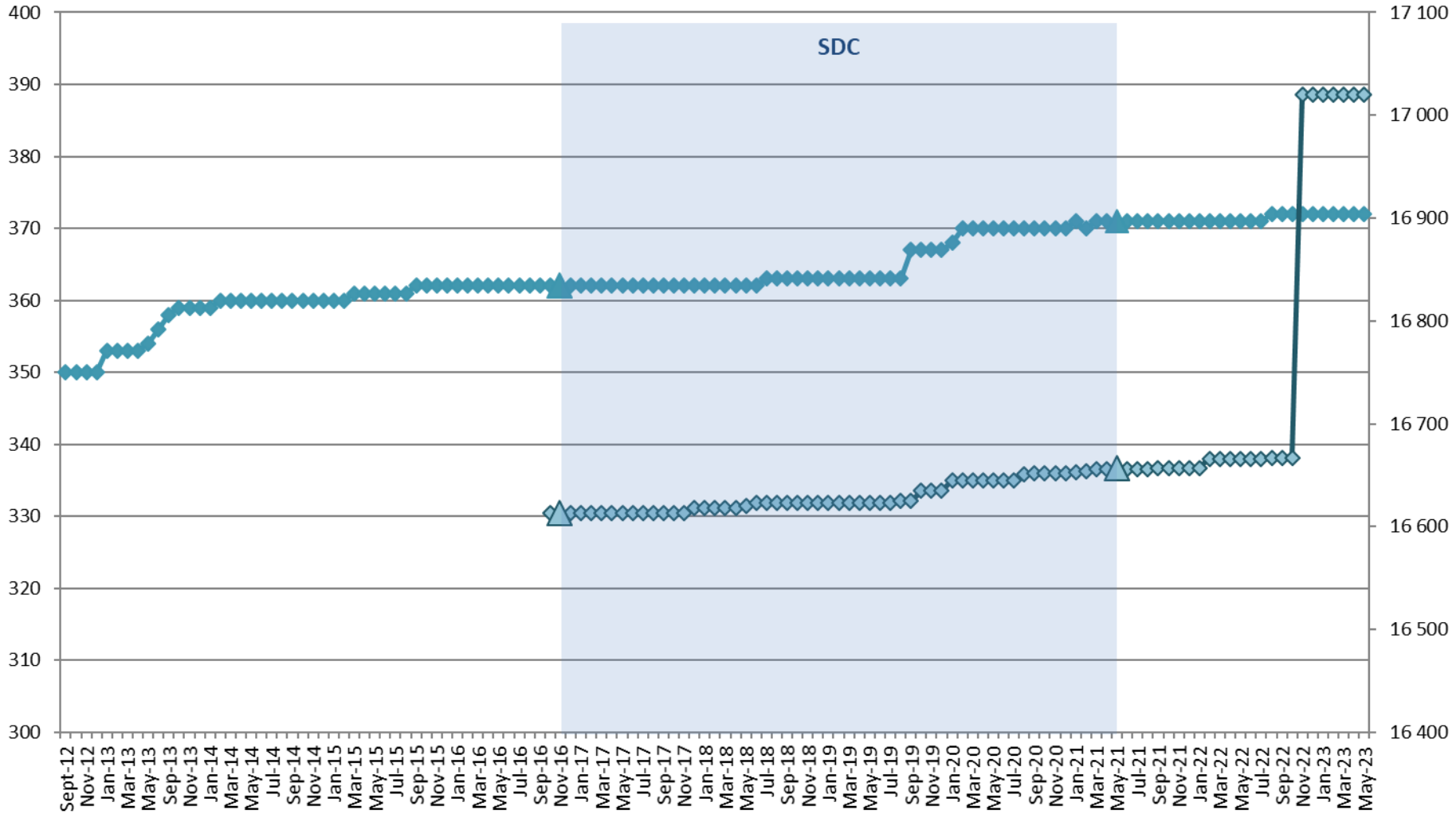


# EDMERP

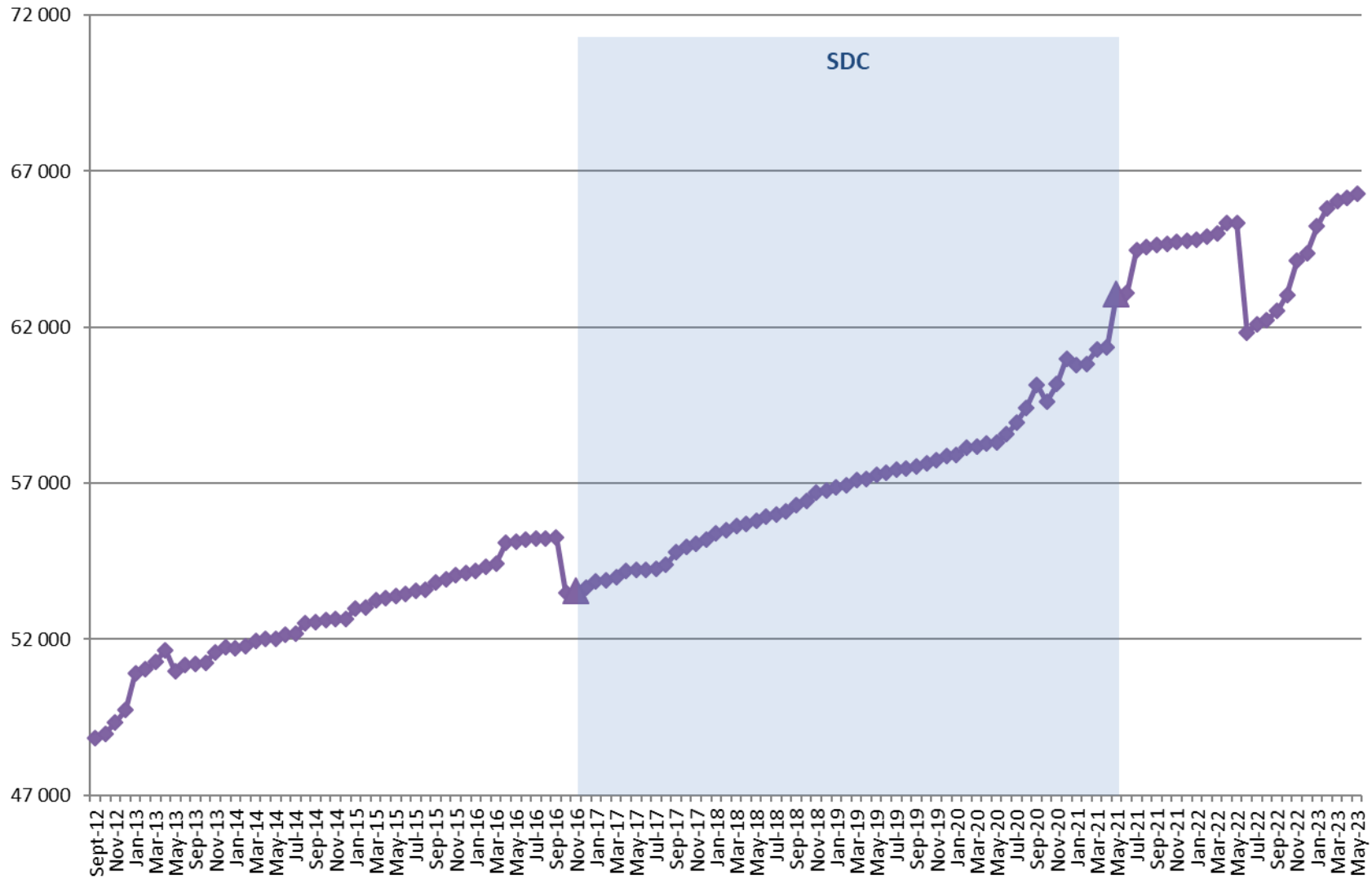


# EDIOS

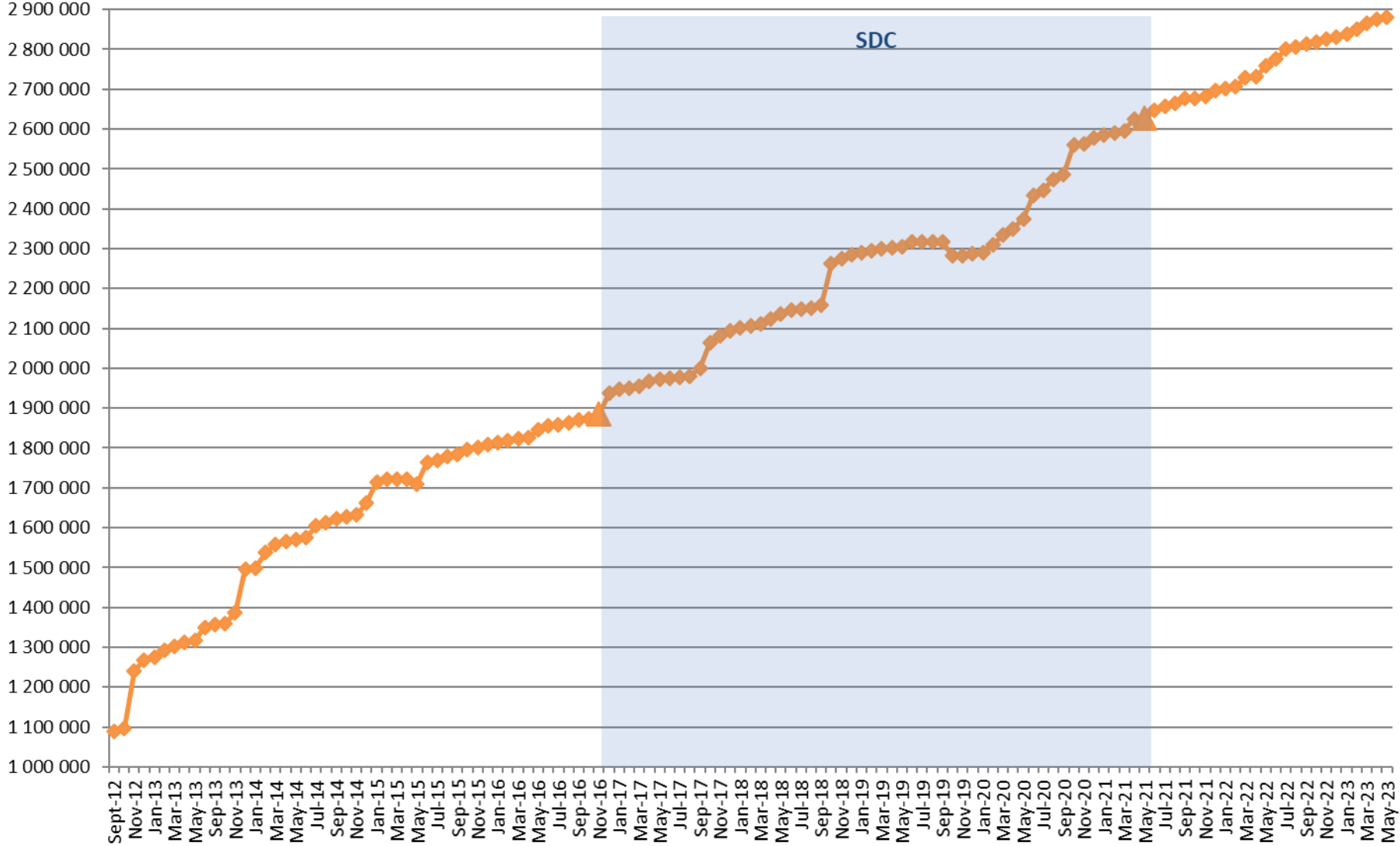
◆ Programmes    ◆ Series



# CSR



# CDI



## Statistics on CDI catalogue

AISBL members	CDI partner	Country	Last increase as distributor	Last increase as custodian
*	ENEA	Italy	+1	+1
*	HCMR	Greece	+9	+9
	ICES	Denmark	+4 177	-2 193
*	IFREMER	France	+1 649	+1 441
*	IMR	Norway	+30	+30
*	IO-BAS	Bulgaria	0	+80
*	LHEI	Latvia	+79	+79
*	MI	Ireland	-87	+36
*	MSI-TALTECH	Estonia	+27	+27
*	NIMRD	Romania	0	+9
*	OGS	Italy	-2 521	+142
*	RBINS	Belgium	+80	+80
	SHOM	France	0	+208
*	SMHI	Sweden	+2 209	+2 239
	SYKE	Finland	+14	+54
*	TSU-DNA	Georgia	+11	+11
*	UTM-CSIC	Spain	+108	+108
	<b>TOTAL</b>	<b>17</b>	<b>+5 786</b>	<b>+2 361</b>
	<b>For AISBL members</b>	<b>12</b>	<b>+1 595</b>	<b>+4 292</b>

Details of last month upgrades per SeaDataNet AISBL members are the following:

- 12 SeaDataNet AISBL members (as distributor) have added data in the CDI catalogue, for a total increase of **+1 595** records.
- 4 others partners, not in the SeaDataNet AISBL, have worked for a increase of **4265** records.

There are 117 distributor of CDIs :

- 29 SeaDataNet AISBL members and
- 88 other partners.



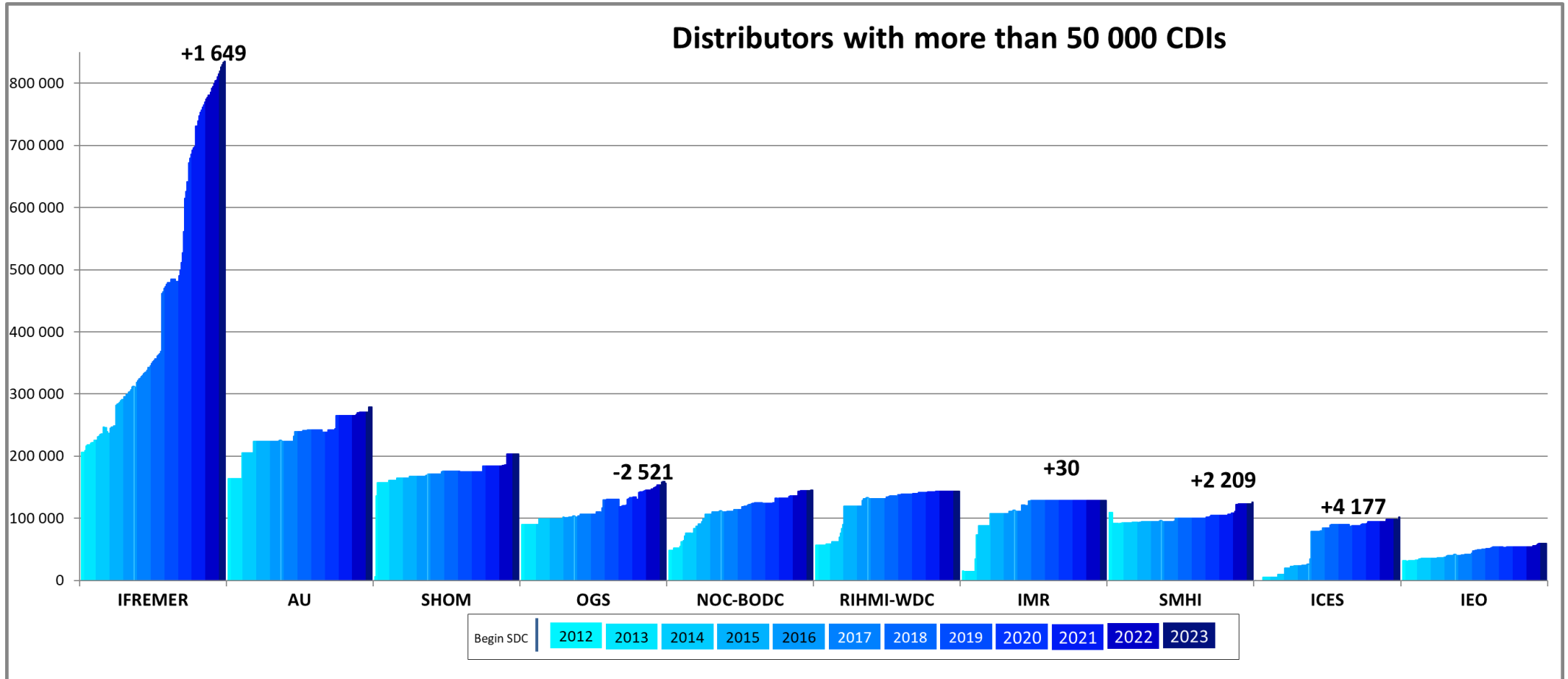
Since the beginning of the follow-up reports (October 2012), the increase in CDI since start SDC (November 2016), between end SDN2 (September 2015) and start SDC, increase since SDN2, per partner, is the following:

**\* Members of SeaDataNet AISBL**

* CDI partner	Name of partner	Country	Nb as distributor 30/05/2023	Nb as Custodian 30/05/2023	Increase as distributor since start SDC	Increase as custodian since start SDC	Increase as distributor between SDN2 and SDC	Increase as distributor since start SDN2
GEOMAR	Helmholtz Centre for Ocean Research Kiel	Germany	0	15 757	0	15 757	0	-
CNRS/OSU-SBR	Roscoff Marine Station, Sorbonne Universités, UPMC Univ Paris 06 and CNRS	France	2	735	2	735	0	2
CNRS/MIO	CNRS/Mediterranean Institute of Oceanography-LUMINY (MIO)-UMR 7294/235/110	France	70	70	70	70	0	70
CNR	CNR - Institute of Atmospheric Sciences and Climate (ISAC) (Rome)	Italy	874	874	621	621	0	874
* INSTM	Institut National des Sciences et Technologies de la Mer	Tunisia	973	973	4	4	0	973
* UTM-CSIC	UTM-CSIC/Marine Technology Unit	Spain	1 133	1 147	1 127	1 141	0	1 133
* IMB-MNE	Institute of Marine Biology - University of Montenegro	Montenegro	1 198	1 894	492	1 188	647	1 176
* TSU-DNA	Iv.Javakhishvili Tbilisi State University	Georgia	1 316	1 319	364	367	34	421
* UM	University Of Malta	Malta	1 941	2 098	916	1 073	393	1 313
* IOPAN	IOPAN	Poland	2 856	9 779	2 838	9 761	0	2 856
* IOF	Institute of Oceanography and Fisheries	Croatia	3 163	3 205	930	972	490	1 587
* ORION	ORION Joint Research and Development Center	Cyprus	3 666	3 775	3 666	3 775	0	3 666
CNRS/OASU	Aquitaine Observatory of Sciences of the Universe - University of Bordeaux (OASU)	France	3 933	3 933	3 933	3 933	38	3 933
* VLIZ	Flanders Marine Institute	Belgium	4 431	4 451	859	879	74	2 812
* IO-BAS	Bulgarian National Oceanographic Data Centre(BGODC)	Bulgaria	5 029	7 705	1 550	4 226	273	2 721
* LHEI	Latvian Institute of Aquatic Ecology	Latvia	5 217	5 650	1 733	2 166	536	4 910
UkrSCES	Ukrainian scientific center of Ecology of Sea (UkrSCES)	Ukraine	6 612	6 612	968	968	267	6 612
* IHPT	IHPT, Hydrographic institute	Portugal	7 451	7 451	1 118	1 118	1 713	6 546
* IOLR	Israel Oceanographic and Limnological Research (IOLR)	Israel	8 572	8 572	2 840	2 840	333	3 499
* NIMRD	National Institute for Marine Research and Development Grigore Antipa	Romania	9 070	9 593	2 180	2 703	602	4 816
* MFRI	Marine and Freshwater Research Institute (MFRI)	Iceland	9 861	9 861	3 947	3 947	0	6 037
* ENEA	ENEA Centro Ricerche Ambiente Marino - La Spezia	Italy	9 888	9 888	799	799	284	1 814

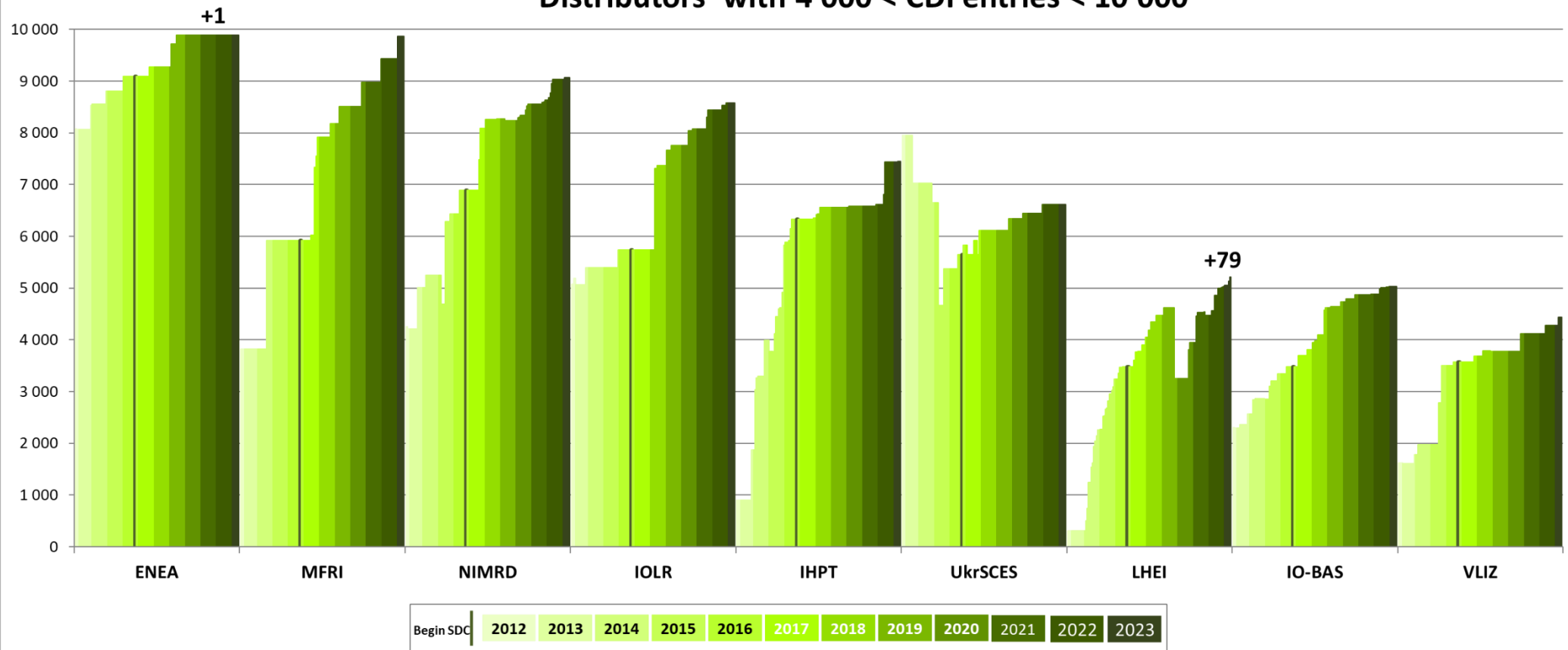
* <b>NIB</b>	National Institute of Biology - NIBMarine Biology Station	Slovenia	10 262	10 306	<b>2 600</b>	<b>2 644</b>	287	6 142
SIO-RAS	P.P.Shirshov Institute of Oceanology-RAS	Russian Federation	13 668	13 668	<b>3 227</b>	<b>3 227</b>	482	-25 155
IMGW	Instytut Meteorologii i Gosodarki Wodnej	Poland	14 668	14 968	<b>1 558</b>	<b>1 858</b>	1 770	14 668
* <b>RBINS</b>	Royal Belgian Institute of Natural Sciences	Belgium	16 599	16 599	<b>4 270</b>	<b>4 270</b>	0	5 066
SYKE	Finnish Environment Institute	Finland	18 131	18 696	<b>11 924</b>	<b>12 489</b>	5 162	18 131
* <b>MI</b>	Marine Institute	Ireland	23 081	35 589	<b>14 832</b>	<b>27 340</b>	0	18 380
* <b>NIOZ</b>	NIOZ Royal Netherlands Institute for Sea Research	Netherlands	23 223	12 667	<b>17 093</b>	<b>6 537</b>	46	18 594
* <b>HCMR</b>	Hellenic Centre for Marine Research	Greece	24 725	27 821	<b>8 736</b>	<b>11 832</b>	260	12 701
* <b>MSI-TALTECH</b>	Marine Systems Institute at Tallinn University of Technology	Estonia	32 081	31 972	<b>5 607</b>	<b>5 498</b>	-3	19 084
* <b>FMI</b>	Finnish Meteorological Institute	Finland	34 641	39 786	<b>21 141</b>	<b>26 286</b>	0	32 430
METU-IMS	Institute of Marine Sciences, Middle East Technical University	Turkey	34 767	34 854	<b>6 750</b>	<b>6 837</b>	2 222	31 685
BSH	German Oceanographic Datacentre (NODC)	Germany	40 633	132 694	<b>1 186</b>	<b>93 247</b>	465	23 355
IEO	IEO/Spanish Oceanographic Institute	Spain	59 611	73 157	<b>19 255</b>	<b>32 801</b>	4 265	28 196
ICES	International Council for the Exploration of the Sea (ICES)	Denmark	101 817	109 029	<b>77 646</b>	<b>84 858</b>	369	101 817
* <b>SMHI</b>	Swedish Meteorological and Hydrological Institute	Sweden	125 488	127 553	<b>31 202</b>	<b>33 267</b>	0	15 961
* <b>IMR</b>	Institute of Marine Research - Norwegian Marine Data Centre (NMD)	Norway	129 158	141 708	<b>17 521</b>	<b>30 071</b>	3 808	114 365
* <b>RIHMI-WDC</b>	All-Russia Research Institute of Hydrometeorological Information - World Data Centre	Russian Federation	143 693	143 693	<b>12 361</b>	<b>12 361</b>	12 003	86 568
* <b>NOC-BODC</b>	British Oceanographic Data Centre	United Kingdom	145 207	244 000	<b>35 204</b>	<b>133 997</b>	2 973	97 150
* <b>OGS</b>	OGS (Istituto Nazionale di Oceanografia e di Geofisica Sperimentale)	Italy	156 614	165 704	<b>55 067</b>	<b>64 157</b>	1 922	67 016
SHOM	Shom	France	203 510	232 503	<b>32 176</b>	<b>61 169</b>	3 754	197 087
AU	Aarhus University	Denmark	279 265	279 636	<b>55 310</b>	<b>55 681</b>	609	115 111
* <b>IFREMER</b>	IFREMER / IDM/SISMER	France	835 582	496 519	<b>524 825</b>	<b>185 762</b>	24 240	629 383
		<b>TOTAL</b>	<b>2 553 680</b>	<b>2 518 464</b>	<b>990 448</b>	<b>955 232</b>	<b>70 318</b>	<b>1 685 506</b>

## CDIs number per month and per distributors



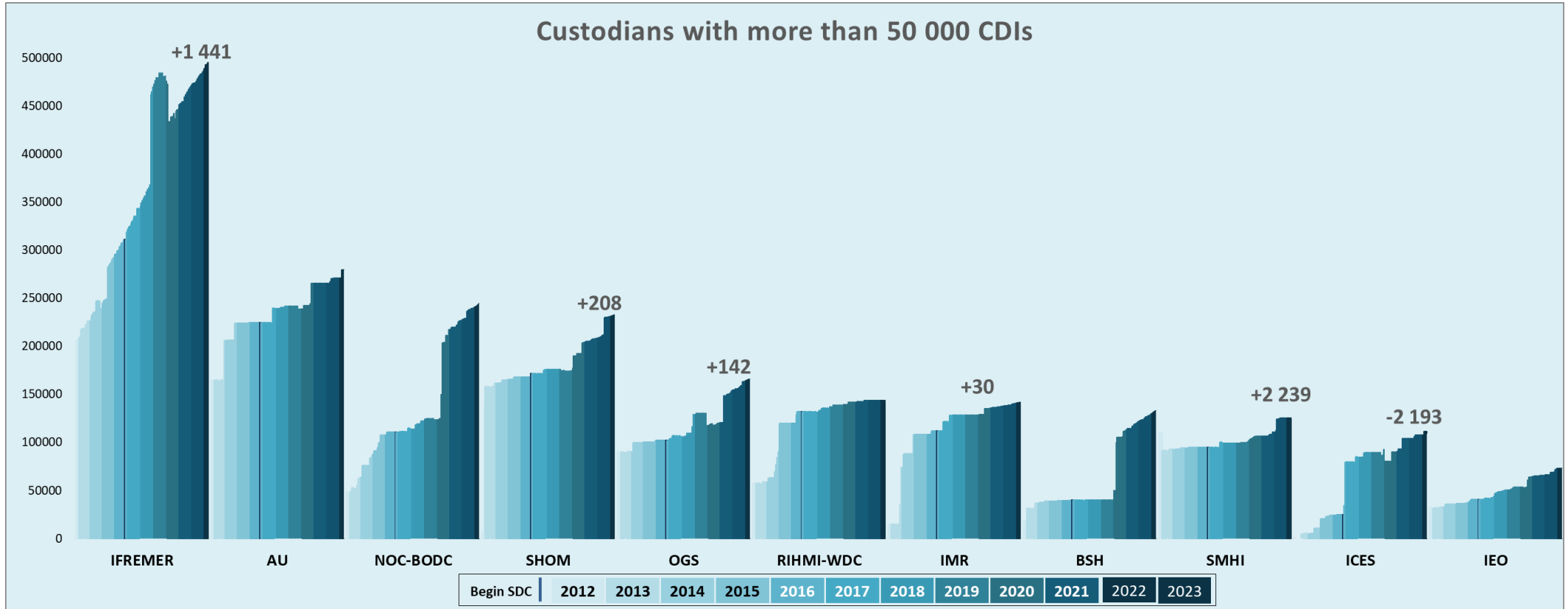


### Distributors with 4 000 < CDI entries < 10 000





## CDIs number per month and per custodians







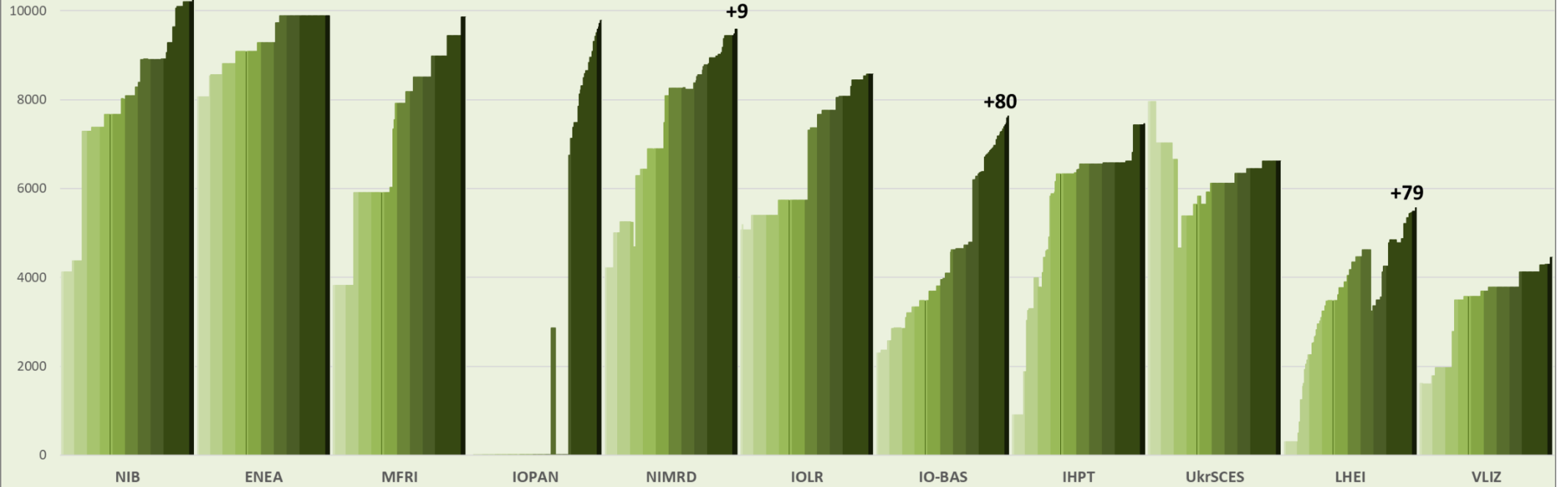
### Custodians with 4 000 < CDI entries < 10 000

+1

+9

+80

+79



Begin SDC | 2012 | 2013 | 2014 | 2015 | 2016 | 2017 | 2018 | 2019 | 2020 | 2021 | 2022 | 2023

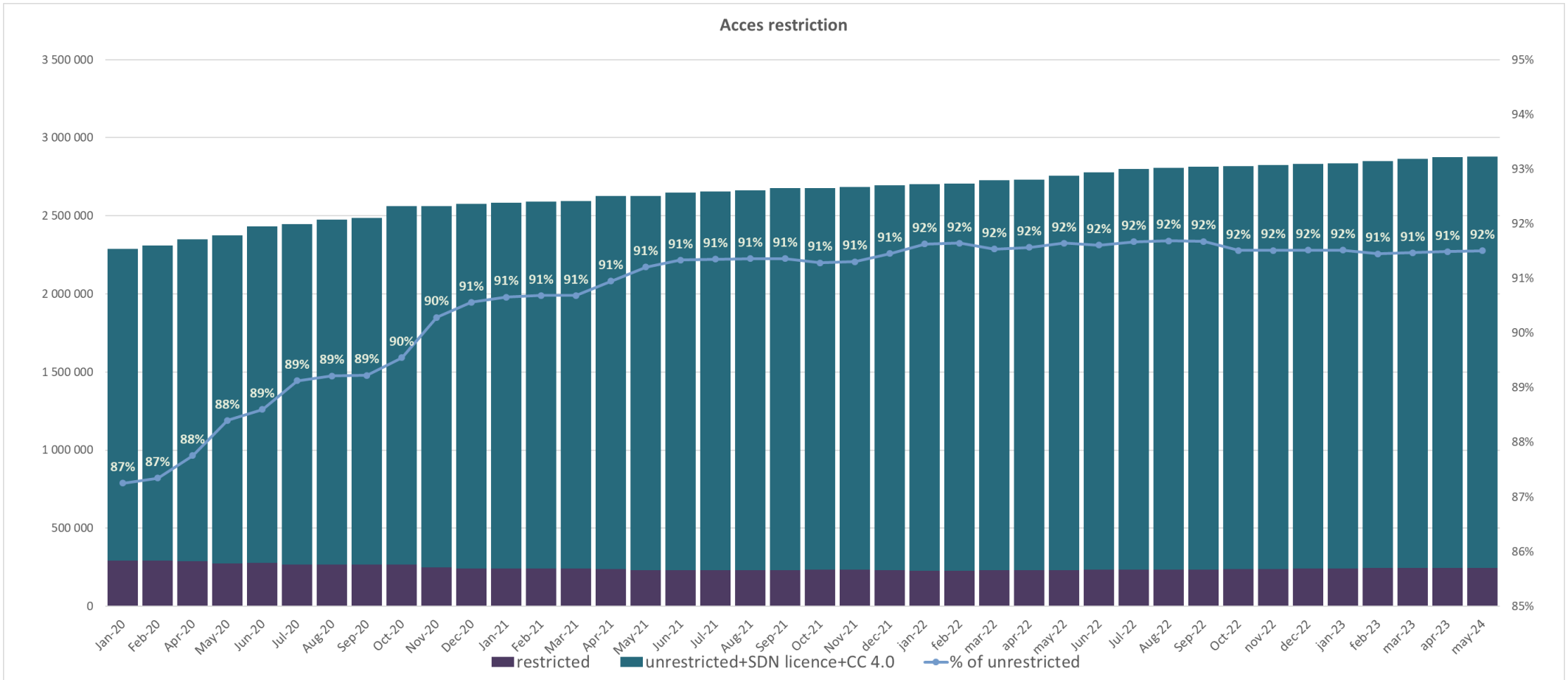


## CDIs number per acces type

Since January 2020, the number of CDIs with restricted access decrease from 291 820 CDIs to 244 790 CDIs : 47 030 less.

Since July 2021 all access restrictions moved to only 2 differents access codes :

- 1) 'unrestricted', 'SeaDataNet licence' => '**Creative Commons Attribution 4.0 International**'
- 2) 'Commercial charge', 'moratorium', 'organisation', 'licence', 'no access', 'academic', 'by negotiation' => '**by negotiation**'



## Statistics on CSR back office

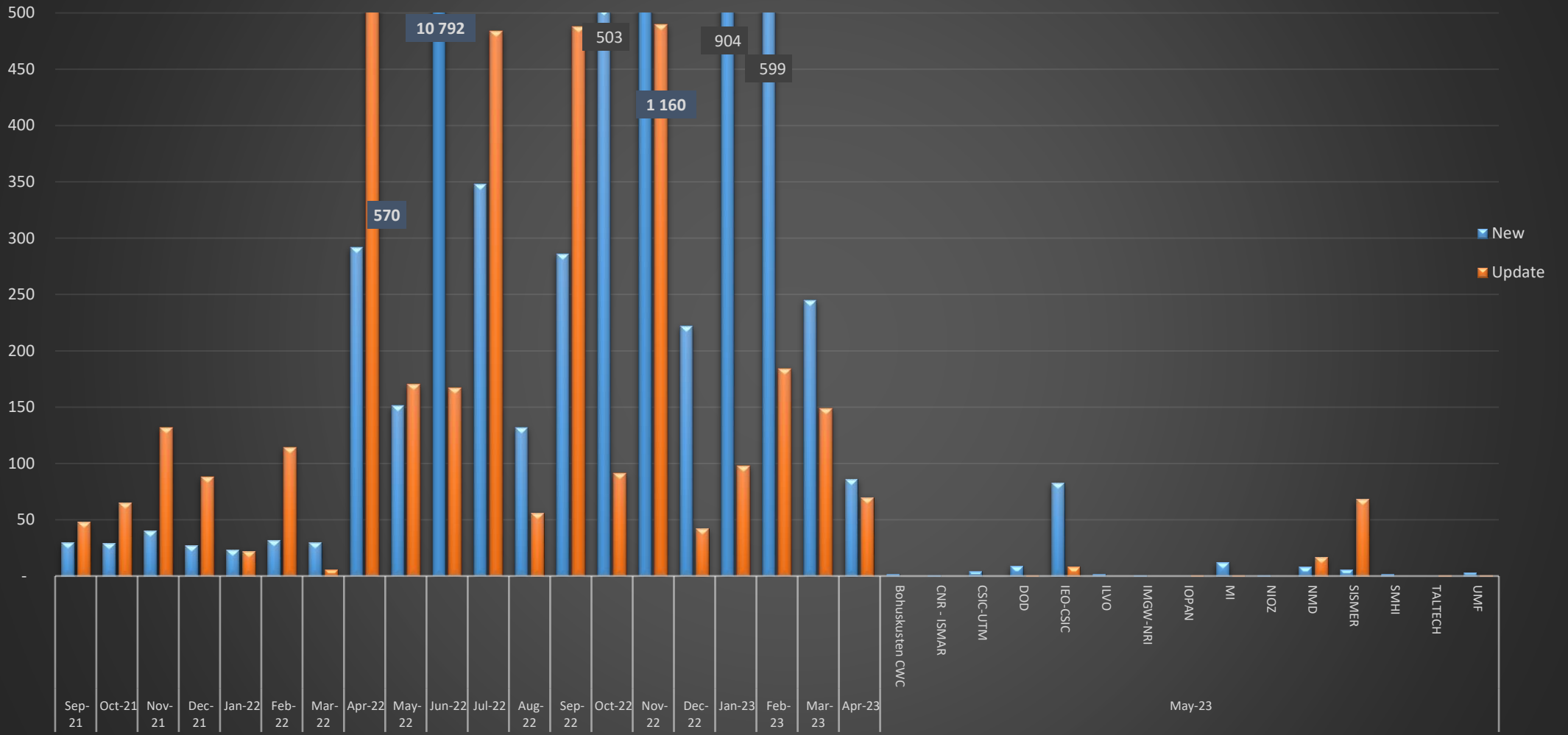
This are the statistics from the new CSR back office allowing all partners to upload their CSR reports in the central catalogue.

This month, 134 new CSRs and 98 updates have been uploaded by 15 partners . Detail of CSR delivery per centre is the following :

CSR workflow Sept 2021 – May 2023		
Nb CSRs	New	Update
Sep-21	30	48
Oct-21	29	65
Nov-21	40	132
Dec-21	27	88
Jan-22	23	22
Feb-22	32	114
May-22	151	170
Jun-22	10 792	167
Jul-22	348	484
Aug-22	132	56
Sep-22	286	488
Oct-22	503	91
Nov-22	1 160	490
Dec-22	222	42
Jan-23	904	98
Feb-23	599	184
Mar-23	245	149
Apr 23	86	70
May 23	134	98
<b>Total</b>	<b>17 826</b>	<b>3 563</b>

March Details		
Nb CSRs	New	Update
Bohuskusten CWC	2	
CNR - ISMAR	1	
CSIC-UTM	4	
DOD	9	1
IEO-CSIC	83	8
ILVO	2	
IMGW-NRI	1	
IOPAN		17
MI	12	1
NIOZ	1	
NMD	8	17
SISMER	6	68
SMHI	2	
TALTECH		1
UMF	3	1

# CSR workflow



## History

### Global counts on all catalogues in 2022

Catalogue	Jan-22	Feb-22	Mar-22	Apr-22	May-22	Jun-22	Jul-22	Aug-22	Sep-22	Oct-22	Nov-22	Dec-22
EDMO	4 521	4 526	4 533	4 551	4 560	4 584	4 588	4 616	4 634	4 667	4 691	4 703
EDMED	4 281	4 292	4 294	4 296	4 298	4 306	4 307	4 309	4 309	4 321	4 322	4 324
EDMERP	3 364	3 365	3 367	3 367	3 373	3 374	3 395	3 397	3 401	3 406	3 413	3 423
EDIOS-PRG	371	371	371	371	371	371	371	372	372	372	372	372
-Series	16 657	16 666	16 666	16 666	16 666	16 666	16 666	16 667	16 667	16 667	17 020	17 020
CSR	64 815	64 895	65 009	65 328	65 354	61 820	62 096	62 226	62 512	63 032	64 141	64 363
CDI	2 702 535	2 708 033	2 728 713	2 731 329	2 758 139	2 777 414	2 801 184	2 806 350	2 813 360	2 819 264	2 826 367	2 831 011

### Global counts on all catalogues in 2021

Catalogue	Jan-21	Feb-21	Mar-21	Apr-21	May-21	Jun-21	Jul-21	Aug-21	Sep-21	Oct-21	Nov-21	Dec-21
EDMO	4 403	4 413	4 434	4 441	4 460	4 470	4 481	4 486	4 487	4 497	4 502	4 509
EDMED	4 262	4 262	4 263	4 264	4 267	4 268	4 273	4 274	4 278	4 278	4 278	4 279
EDMERP	3 311	3 317	3 326	3 330	3 335	3 339	3 341	3 341	3 348	3 354	3 354	3 355
EDIOS-PRG	371	370	371	371	371	371	371	371	371	371	371	371
-Series	16 653	16 654	16 656	16 656	16 656	16 656	16 656	16 656	16 657	16 657	16 657	16 657
CSR	60 783	60 822	61 276	61 343	63 030	63 079	64 458	64 567	64 624	64 667	64 722	64 764
CDI	2 584 536	2 591 431	2 596 096	2 625 498	2 626 427	2 646 959	2 656 975	2 663 701	2 676 060	2 676 121	2 683 271	2 697 131

### Global counts on all catalogues in 2020

Catalogue	Jan-20	Feb-20	Mar-20	Apr-20	May-20	Jun-20	Jul-20	Aug-20	Sep-20	Oct-20	Nov-20	Dec-20
EDMO	4 249	4 267	4 278	4 291	4 298	4 316	4 320	4 331	4 349	4 365	4 374	4 388
EDMED	4 225	4 227	4 228	4 232	4 234	4 245	4 247	4 249	4 250	4 252	4 254	4 259
EDMERP	3 166	3 170	3 177	3 190	3 205	3 239	3 254	3 278	3 289	3 300	3 300	3 307
EDIOS-PRG	368	370	370	370	370	370	370	370	370	370	370	370
-Series	16 645	16 645	16 645	16 645	16 645	16 645	16 645	16 651	16 652	16 652	16 652	16 652
CSR	57 920	58 136	58 177	58 261	58 315	58 560	58 935	59 414	60 159	59 599	60 167	60 995
CDI	2 289 624	2 311 070	2 333 919	2 349 773	2 375 117	2 433 487	2 447 194	2 474 835	2 487 180	2 561 271	2 563 223	2 576 807

## Global counts on all catalogues in 2019

Catalogue	Jan-19	Feb-19	Mar-19	Apr-19	May-19	Jun-19	Jul-19	Aug-19	Sep-19	Oct-19	Nov-19	Dec-19
EDMO	4 105	4 110	4 117	4 131	4 138	4 177	4 181	4 190	4 195	4 211	4 227	4 234
EDMED	4 198	4 198	4 203	4 205	4 207	4 205	4 205	4 206	4 209	4 210	4 213	4 223
EDMERP	3 125	3 128	3 133	3 133	3 135	3 138	3 144	3 144	3 149	3 159	3 163	3 164
EDIOS-PRG	363	363	363	363	363	363	363	363	367	367	367	367
CSR	56 877	56 943	57 089	57 148	57 267	57 331	57 437	57 474	57 537	57 637	57 749	57 866
CDI	2 289 929	2 294 771	2 299 924	2 302 286	2 306 093	2 316 223	2 316 610	2 316 610	2 316 610	2 281 710	2 283 087	2 288 566

## Global counts on all catalogues in 2018

Catalogue	Jan-18	Feb-18	Mar-18	Apr-18	May-18	Jun-18	Jul-18	Aug-18	Sep-18	Oct-18	Nov-18	Dec-18
EDMO	3 927	3 931	3 940	3 952	3 968	3 981	3 997	3 999	4 010	4 021	4 068	4 078
EDMED	4 154	4 158	4 162	4 166	4 166	4 170	4 173	4 189	4 191	4 182	4 187	4 187
EDMERP	3 042	3 048	3 051	3 054	3 058	3 062	3 068	3 071	3 073	3 083	3 105	3 106
EDIOS-PRG	362	362	362	362	362	362	363	363	363	363	363	363
CSR	55 399	55 485	55 630	55 709	55 783	55 937	55 982	56 085	56 316	56 436	56 694	56 783
CDI	2 101 090	2 106 680	2 110 688	2 122 824	2 137 067	2 146 266	2 148 856	2 152 074	2 159 216	2 262 108	2 276 264	2 283 986

## Global counts on all catalogues in 2017

Catalogue	Jan-17	Feb-17	Mar-17	Apr-17	May-17	Jun-17	Jul-17	Aug-17	Sep-17	Oct-17	Nov-17	Dec-17
EDMO	3 802	3 812	3 826	3 832	3 838	3 869	3 880	3 886	3 891	3 899	3 915	3 920
EDMED	4 082	4 085	4 084	4 096	4 099	4 101	4 101	4 108	4 131	4 135	4 142	4 149
EDMERP	2 981	2 988	2 990	2 990	2 992	2 993	3 000	3 016	3 018	3 020	3 026	3 036
EDIOS-PRG	362	362	362	362	362	362	362	362	362	362	362	362
CSR	53 850	53 892	53 974	54 175	54 218	54 217	54 250	54 387	54 795	54 949	55 052	55 178
CDI	1 947 452	1 949 991	1 955 483	1 968 060	1 971 285	1 974 509	1 977 738	1 980 818	2 000 402	2 063 832	2 081 618	2 093 605

## Global counts on all catalogues in 2016

Catalogue	Jan-16	Feb-16	Mar-16	Apr-16	May-16	Jun-16	Jul-16	Aug-16	Sep-16	Oct-16	Nov-16	Dec-16
EDMO	3 671	3 670	3 686	3 691	3 695	3 712	3 730	3 733	3 747	3 758	3 775	3 791
EDMED	4 060	4 066	4 007	4 061	4 062	4 067	4 069	4 074	4 076	4 077	4 077	4 077
EDMERP	2 903	2 961	2 961	2 961	2 966	2 971	2 971	2 974	2 975	2 975	2 975	2 979
EDIOS-PRG	362	362	362	362	362	362	362	362	362	362	362	362
CSR	54 182	54 339	54 422	55 100	55 119	55 178	55 216	55 238	55 264	53 484	53 537	53 669
CDI	1 813 947	1 819 492	1 824 402	1 825 957	1 844 660	1 854 787	1 858 162	1 864 378	1 869 790	1 873 823	1 884 034	1 936 759

### Global counts on all catalogues in 2015

Catalogue	Jan-15	Feb-15	Mar-15	Apr-15	May-15	Jun-15	Jul-15	Aug-15	Sep-15	Oct-15	Nov-15	Dec-15
<b>EDMO</b>	3 210	3 223	3 275	3 324	3 422	3 532	3 556	3 564	3 583	3 619	3 639	3 659
<b>EDMED</b>	3 980	3 982	3 984	3 984	3 990	3 992	4 014	4 034	4 053	4 055	4 054	4 060
<b>EDMERP</b>	2 858	2 866	2 878	2 878	2 886	2 898	2 900	2 900	2 901	2 903	2 903	2 903
<b>EDIOS-PRG</b>	360	360	361	361	361	361	361	361	362	362	362	362
<b>CSR</b>	52 977	53 028	53 238	53 304	53 400	53 463	53 553	53 602	53 836	53 938	54 057	54 135
<b>CDI</b>	1 714 285	1 721 708	1 721 604	1 720 724	1 709 958	1 764 762	1 767 715	1 779 199	1 784 327	1 796 791	1 800 648	1 809 541

### Global counts on all catalogues in 2014

Catalogue	Jan-14	Feb-14	Mar-14	Apr-14	May-14	Jun-14	Jul-14	Aug-14	Sep-14	Oct-14	Nov-14	Dec-14
<b>EDMO</b>	2 451	2 467	2 651	2 685	2 688	2 692	2 693	2 701	2 875	3 103	3 199	3 212
<b>EDMED</b>	3 944	3 945	3 945	3 947	3 948	3 955	3 957	3 960	3 961	3 962	3 963	3 965
<b>EDMERP</b>	2 787	2 808	2 830	2 832	2 834	2 837	2 841	2 844	2 847	2 849	2 850	2 857
<b>EDIOS-PRG</b>	359	360	360	360	360	360	360	360	360	360	360	360
<b>CSR</b>	51 724	51 788	51 941	52 012	52 012	52 151	52 190	52 506	52 566	52 603	52 650	52 657
<b>CDI</b>	1 498 793	1 537 556	1 558 428	1 566 528	1 569 847	1 575 035	1 604 916	1 612 514	1 621 749	1 626 904	1 631 984	1 662 548

### Global counts on all catalogues in 2012/2013

Catalogue	Sept-12	Oct-12	Nov-12	Dec-12	Jan-13	Feb-13	Mar-13	Apr-13	May-13	Aug-13	Sep-13	Oct-13	Nov-13	Dec-13
<b>EDMO</b>	2 261	2 283	2 296	2 304	2 330	2 351	2 359	2 362	2 370	2 384	2 404	2 404	2 423	2 431
<b>EDMED</b>	3 834	3 834	3 834	3 834	3 834	3 834	3 882	3 885	3 885	3 889	3 901	3 901	3 925	3 944
<b>EDMERP</b>	2 617	2 637	2 667	2 674	2 683	2 684	2 685	2 686	2 690	2 698	2 710	2 710	2 772	2 772
<b>EDIOS-PRG</b>	350	350	350	350	353	353	353	353	354	356	358	359	359	359
<b>CSR</b>	48 824	48 975	49 326	49 750	50 917	51 033	51 276	51 647	50 973	51 181	51 207	51 259	51 588	51 730
<b>CDI</b>	1 088 322	1 097 399	1 241 010	1 267 669	1 274 982	1 291 491	1 302 629	1 311 827	1 317 191	1 350 455	1 356 245	1 360 236	1 386 446	1 496 950





BODC	2	
CSIC-UTM	8	
DOD	25	
ETH Zürich	1	
Faroe MRI	1	
GEOMAR	3	
ICES (managed by Ifremer)	1 721	
IEO-CSIC	52	
ILVO	1	
IMGW-NRI	2	
LHEI	10	
MBA	1	
MI	2	
MRI	2	
NIMRD	4	
NMD	32	1
RBINS (IRScNB/KBIN)	3	
SISMER	12	27
SLF	1	
SMHI	8	
SOCIB	1	
TALTECH	1	
UMF	1	1
VLIZ	1	