

# January 2024 – SeaDataNet catalogues follow-up

All documents used to write this report are available on the extranet of the project under [SeaDataCloud > Follow up](#).

In January 2024, global increases on catalogues :

- **EDMO (Marine organisations)** : **+13** - Total : **4 909**
- **EDMED (Data sets)** : - Total : **4 347**
- **EDMERP (Projects)** : **+2** - Total : **3 474**
- **EDIOS-PRG**
  - Programmes : - Total : **373**
  - Series : - Total : **17 040**
- **CSR (Cruises)** : **+70** - Total : **67 844**
- **CDI (Data)** : **-42 007** - Total : **2 872 833**

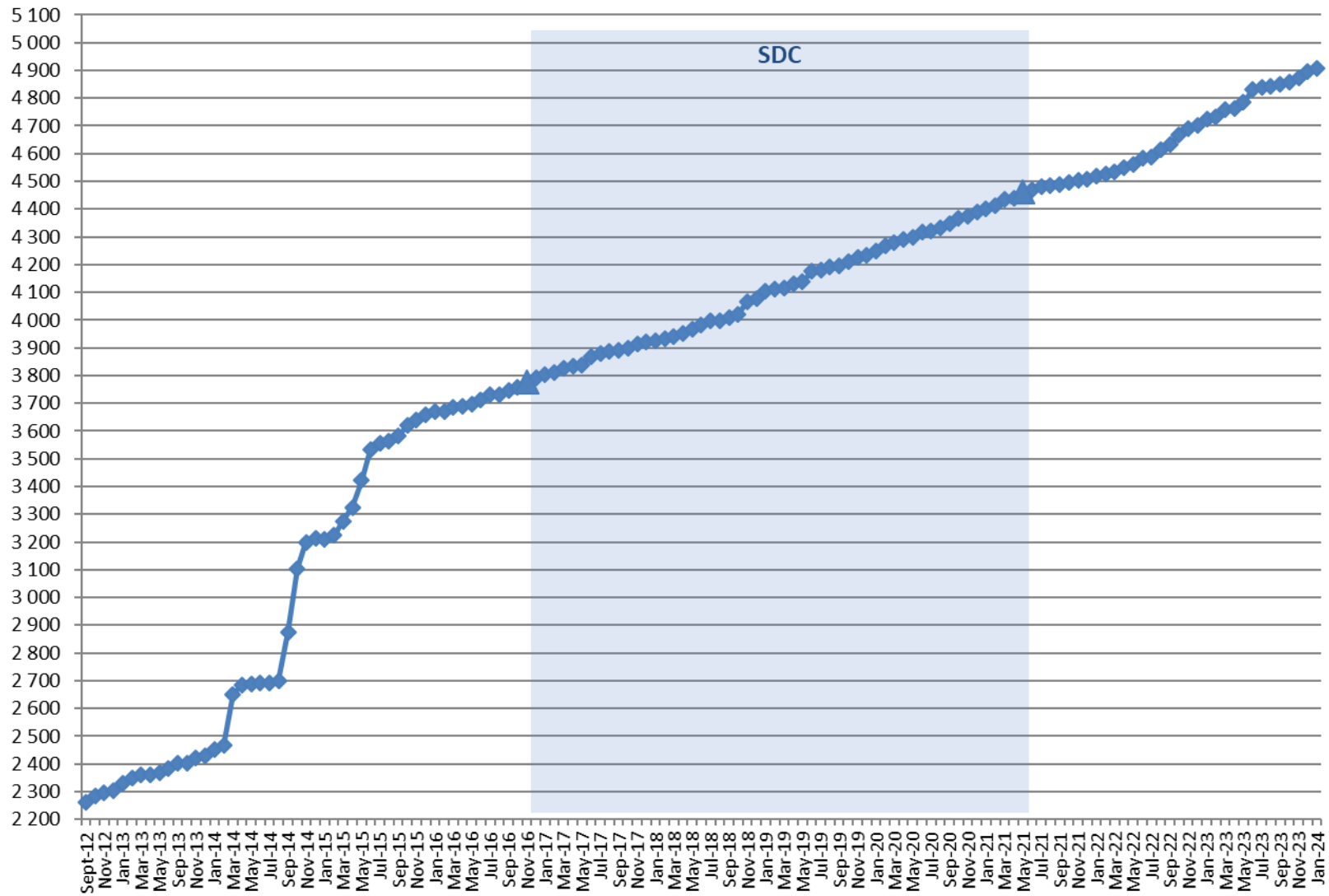
## Since the beginning of SeaDataCloud :

Catalogue	Jan-24	Dec-23	Nov-23	Oct-23	Sep-23	Aug-23	Jul-23	Jun-23	May-23	Apr-23	Mar-23	Feb-23	Oct-16	Increase*
<b>EDMO</b>	<b>4 909</b>	4 896	4 873	4 858	4 852	4 841	4 838	4 833	4 785	4 763	4 758	4 731	<b>3 758</b>	<b>1 151</b>
<b>EDMED</b>	<b>4 347</b>	4 347	4 345	4 339	4 337	4 333	4 333	4 333	4 332	4 331	4 328	4 328	<b>4 077</b>	<b>270</b>
<b>EDMERP</b>	<b>3 474</b>	3 472	3 470	3 466	3 462	3 454	3 454	3 446	3 442	3 434	3 433	3 431	<b>2 975</b>	<b>499</b>
<b>EDIOS-PRG</b>	<b>373</b>	373	373	373	372	372	372	372	372	372	372	372	<b>362</b>	<b>11</b>
<b>EDIOS-Series</b>	<b>17 040</b>	17 040	17 040	17 040	17 038	17 020	17 020	17 020	17 020	17 020	17 020	17 020	<b>16 613</b>	<b>427</b>
<b>CSR</b>	<b>67 844</b>	67 774	67 720	67 647	67 477	66 538	66 457	66 408	66 264	66 133	66 049	65 804	<b>53 484</b>	<b>14 360</b>
<b>CDI</b>	<b>2 872 823</b>	2 914 830	2 909 377	2 900 312	2 896 333	2 897 449	2 894 186	2 887 335	2 880 666	2 874 806	2 865 680	2 851 301	<b>1 873 823</b>	<b>999 000</b>

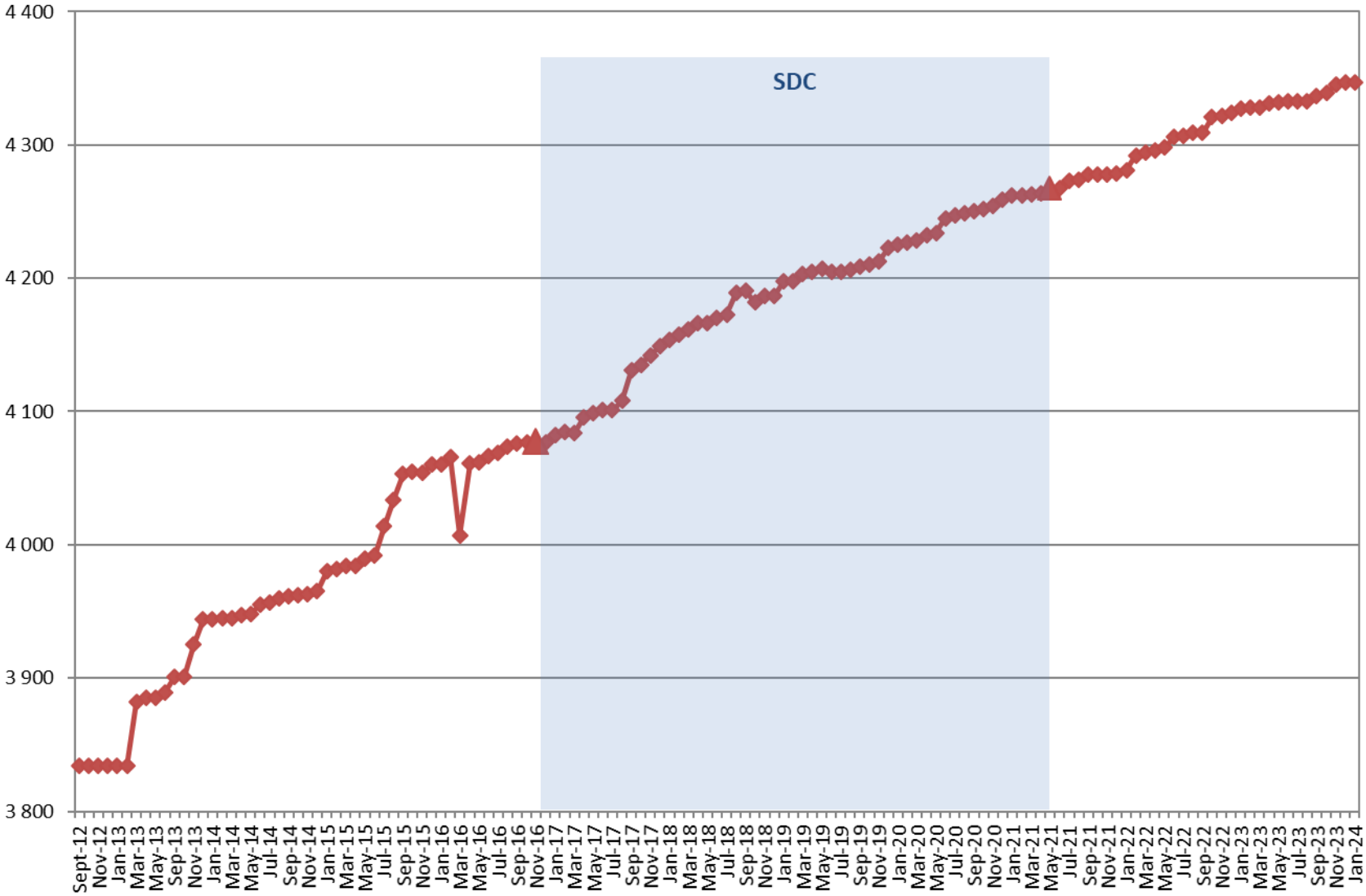
(\*) Increase since beginning of SeaDataCloud (01/11/2016)

# Nb of EDMO, EDMED, EDMERP, EDIOS, CSR and CDI per month

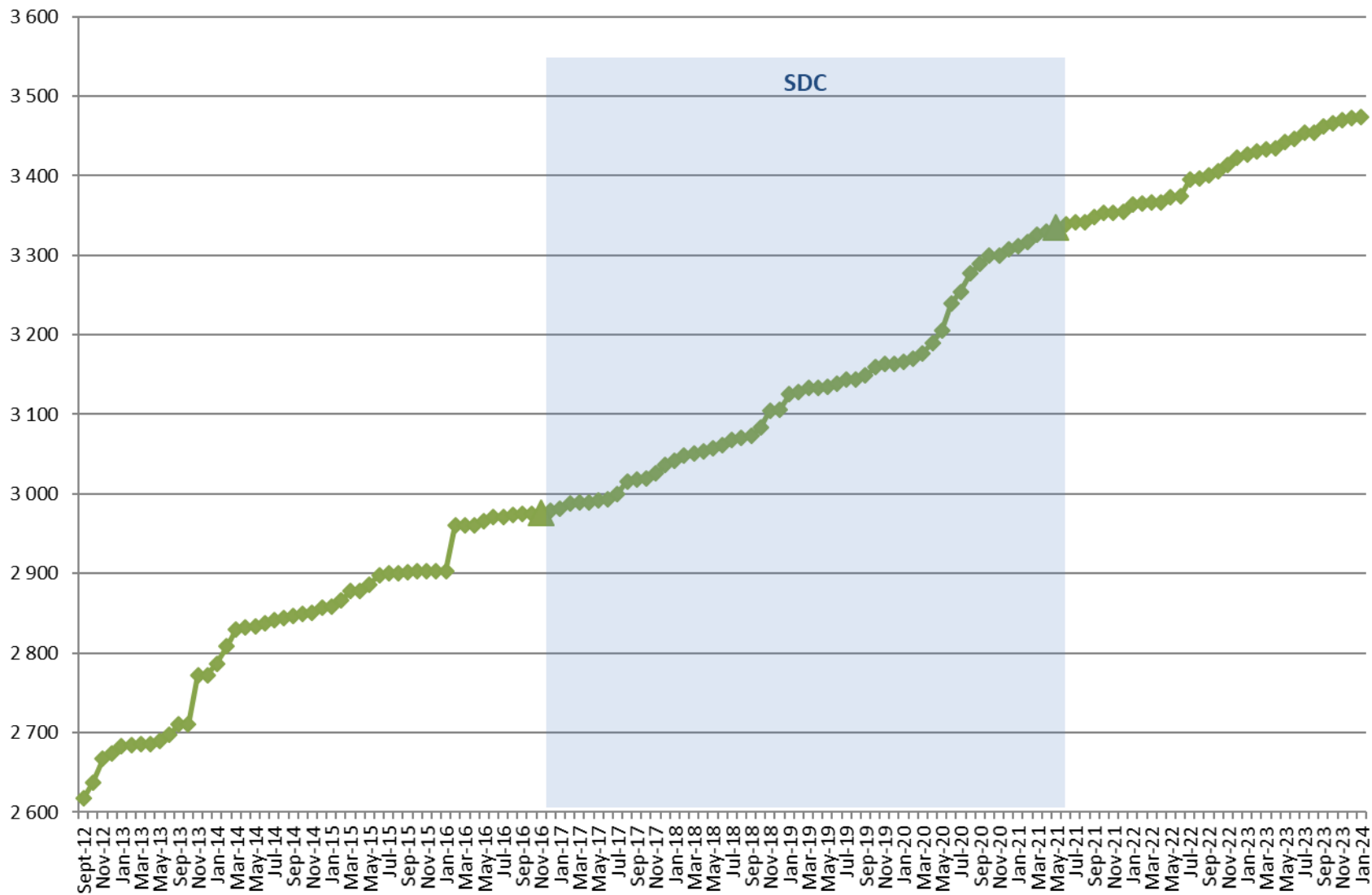
## EDMO



# EDMED

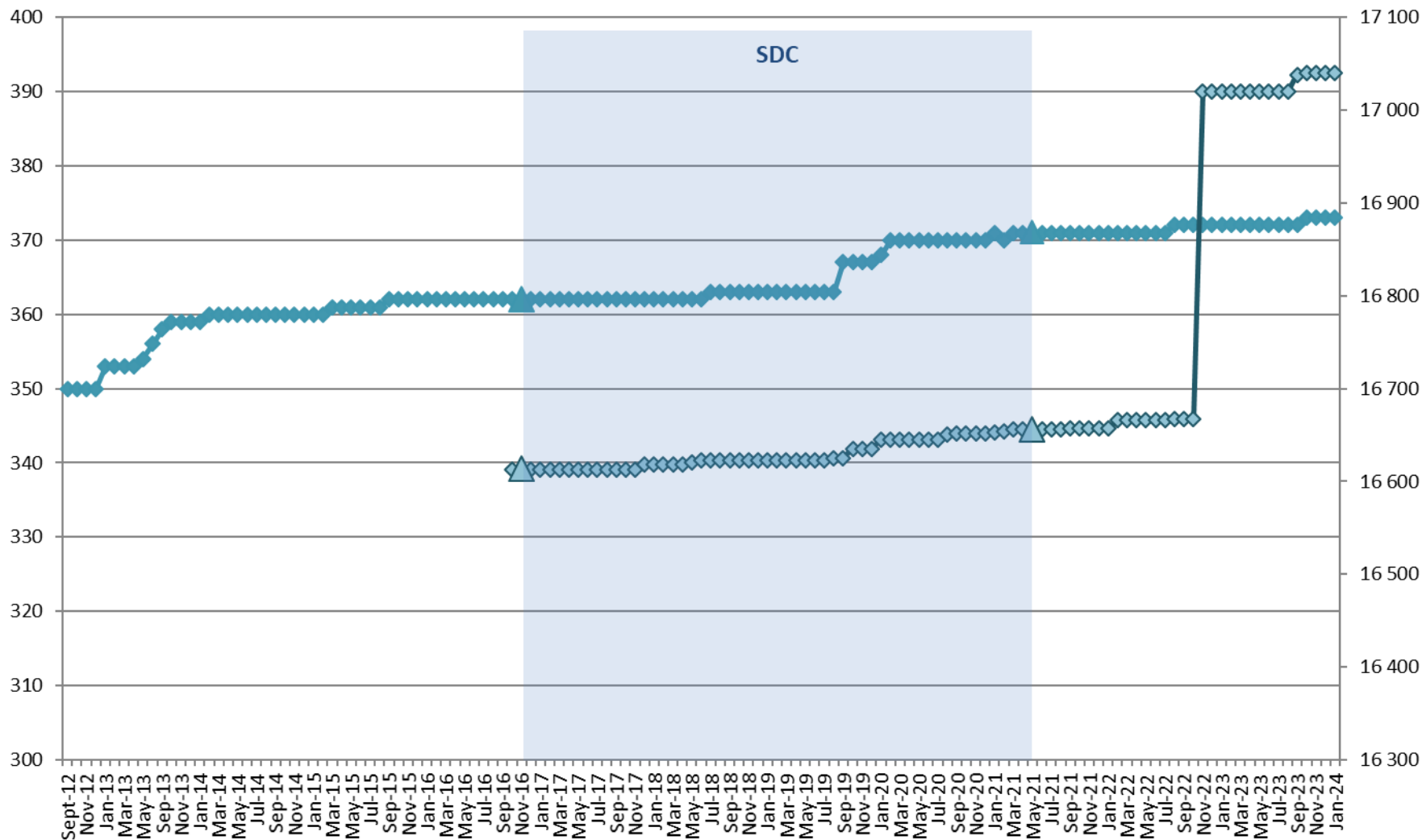


# EDMERP

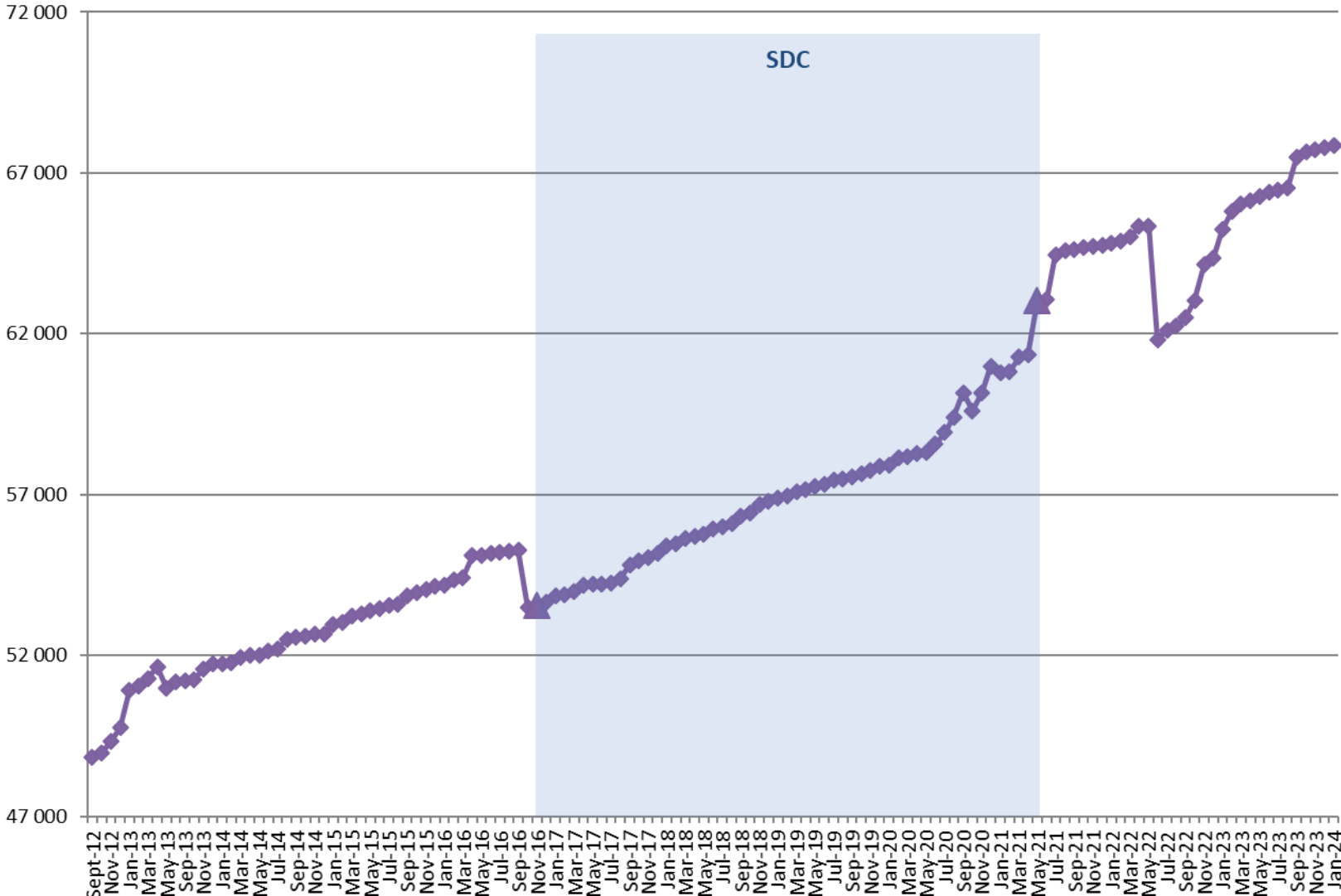


# EDIOS

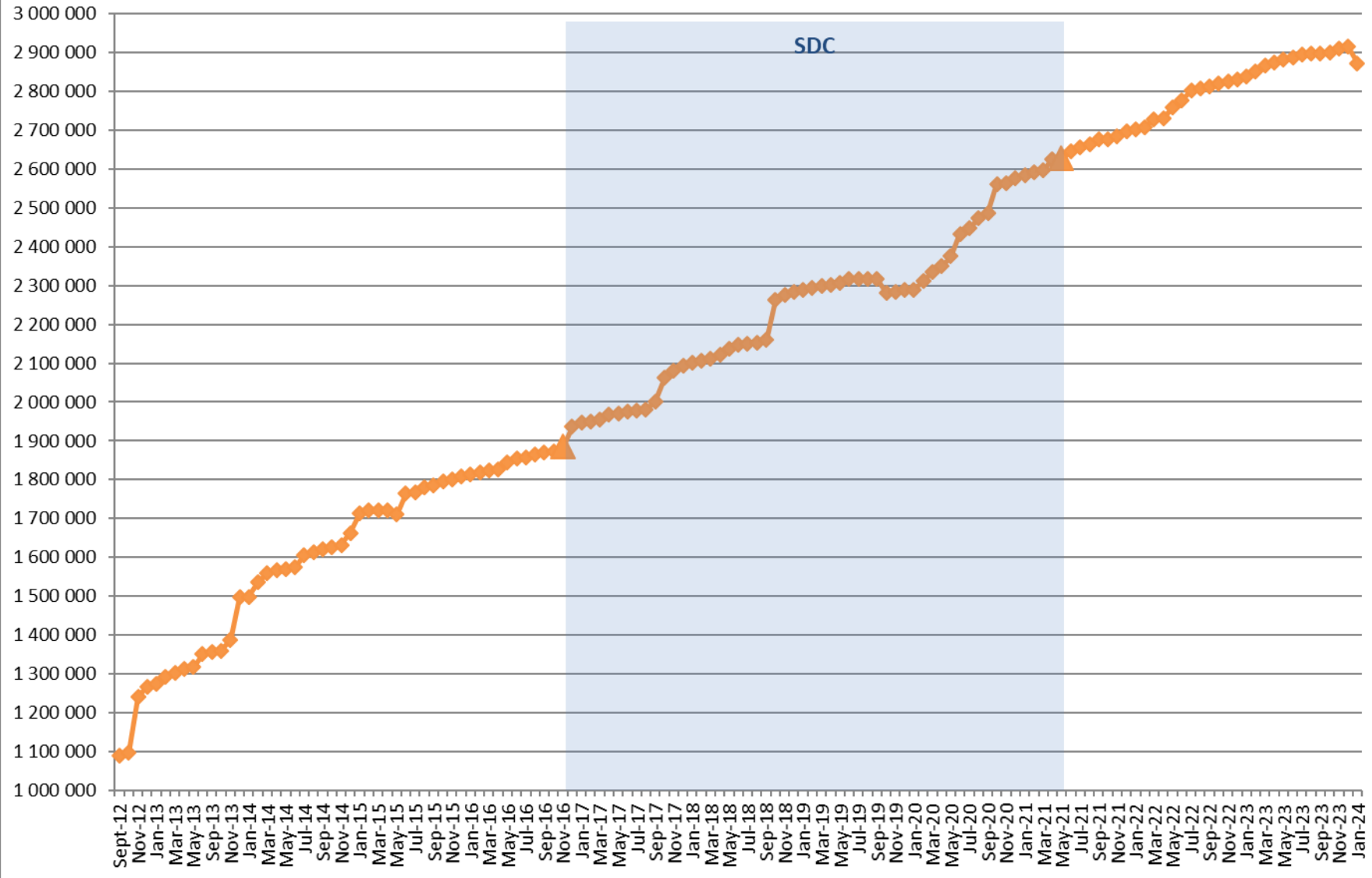
◆ Programmes    ◆ Series



# CSR



# CDI



## Statistics on CDI catalogue

AISBL members	CDI partner	Country	Last increase as distributor	Last increase as custodian
	AU	Denmark	+5 262	+5 272
	BSH	Germany	+39	+590
	IEO	Spain	-19 173	-19 113
*	IFREMER	France	+2 678	+973
*	IMR	Norway	-42 774	-42 638
*	IO-BAS	Bulgaria	+3	+28
*	IOLR	Israel	+1	+1
*	LHEI	Latvia	+476	+476
*	MI	Ireland	+427	+458
*	NIOZ	Netherlands	+7	+7
*	NIMRD	Romania	+663	+663
*	NOC-BODC	United Kingdom	+4 194	+4 546
*	OGS	Italy	+2 428	+161
*	RBINS	Belgium	+539	+539
*	SMHI	Sweden	+1 702	+1 702
	SYKE	Finland	+680	+680
*	VLIZ	Belgium	+2	+38
	<b>TOTAL</b>	<b>17</b>	<b>-42 846</b>	<b>-45 617</b>
	<b>For AISBL members</b>	<b>13</b>	<b>-29 654</b>	<b>-32 906</b>

Details of last month upgrades per SeaDataNet AISBL members are the following:

- 13 SeaDataNet AISBL members (as distributor) have worked on data in the CDI catalogue, for a total decrease of -29 654 records.
- 16 other partners, not in the SeaDataNet AISBL, have worked for a decrease of -12 353 records.

There are 117 distributor of CDIs :

- 29 SeaDataNet AISBL members and
- 88 other partners.



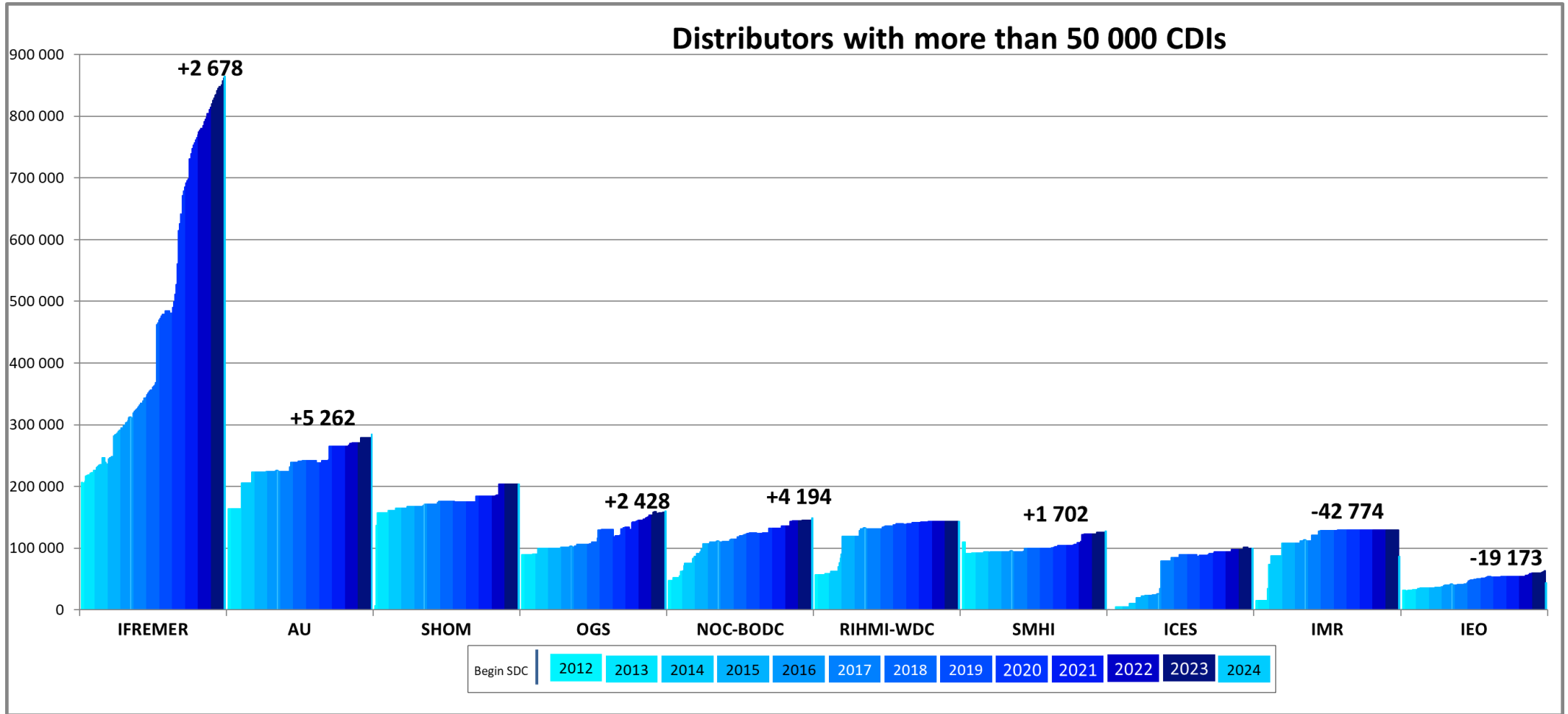
Since the beginning of the follow-up reports (October 2012), the increase in CDI since start SDC (November 2016), between end SDN2 (September 2015) and start SDC, increase since SDN2, per partner, is the following:

**\* Members of SeaDataNet AISBL**

* CDI partne	Name of partner	Country	Nb as distributor 05/02/2024	Nb as Custodian 05/02/2024	Increase as distributor since start SDC	Increase as custodian since start SDC	Increase as distributor between SDN2 and SDC	Increase as distributor since start SDN2
GEOMAR	Helmholtz Centre for Ocean Research Kiel	Germany	0	15 791	0	15 791	0	-
CNRS/OSU-SBF	Roscoff Marine Station, Sorbonne Universités, UPMC Univ Paris 06 and CNRS	France	2	735	2	735	0	2
CNRS/MIO	CNRS/Mediterranean Institute of Oceanography-LUMINY (MIO)-UMR 7294/235/110	France	70	70	70	70	0	70
CNR	CNR - Institute of Atmospheric Sciences and Climate (ISAC) (Rome)	Italy	874	874	621	621	0	874
* INSTM	Institut National des Sciences et Technologies de la Mer	Tunisia	973	973	4	4	0	973
* UTM-CSIC	UTM-CSIC/Marine Technology Unit	Spain	1 150	1 164	1 144	1 158	0	1 150
* IMB-MNE	Institute of Marine Biology - University of Montenegro	Montenegro	1 198	1 894	492	1 188	647	1 176
* TSU-DNA	Iv.Javakhishvili Tbilisi State University	Georgia	1 357	1 360	405	408	34	462
* UM	University Of Malta	Malta	1 941	2 098	916	1 073	393	1 313
* IOPAN	IOPAN	Poland	2 856	10 750	2 838	10 732	0	2 856
* IOF	Institute of Oceanography and Fisheries	Croatia	3 164	3 233	931	1 000	490	1 588
* ORION	ORION Joint Research and Development Center	Cyprus	3 666	3 775	3 666	3 775	0	3 666
CNRS/OASU	Aquitaine Observatory of Sciences of the Universe - University of Bordeaux (OASU)	France	3 933	3 933	3 933	3 933	46	3 933
* VLIZ	Flanders Marine Institute	Belgium	4 565	4 621	993	1 049	74	2 946
* IO-BAS	Bulgarian National Oceanographic Data Centre(BGODC)	Bulgaria	5 032	7 932	1 553	4 453	273	2 724
* LHEI	Latvian Institute of Aquatic Ecology	Latvia	5 778	6 211	2 294	2 727	536	5 471
UkrSCES	Ukrainian scientific center of Ecology of Sea (UkrSCES)	Ukraine	6 764	6 764	1 120	1 120	267	6 764
* IHPT	IHPT, Hydrographic institute	Portugal	7 452	7 452	1 119	1 119	1 713	6 547
* IOLR	Israel Oceanographic and Limnological Research (IOLR)	Israel	8 675	8 675	2 943	2 943	333	3 602
* NIMRD	National Institute for Marine Research and Development Grigore Antipa	Romania	9 733	10 277	2 843	3 387	602	5 479
* MFRI	Marine and Freshwater Research Institute (MFRI)	Iceland	9 861	9 861	3 947	3 947	0	6 037
* ENEA	ENEA Centro Ricerche Ambiente Marino - La Spezia	Italy	9 888	9 888	799	799	284	1 814

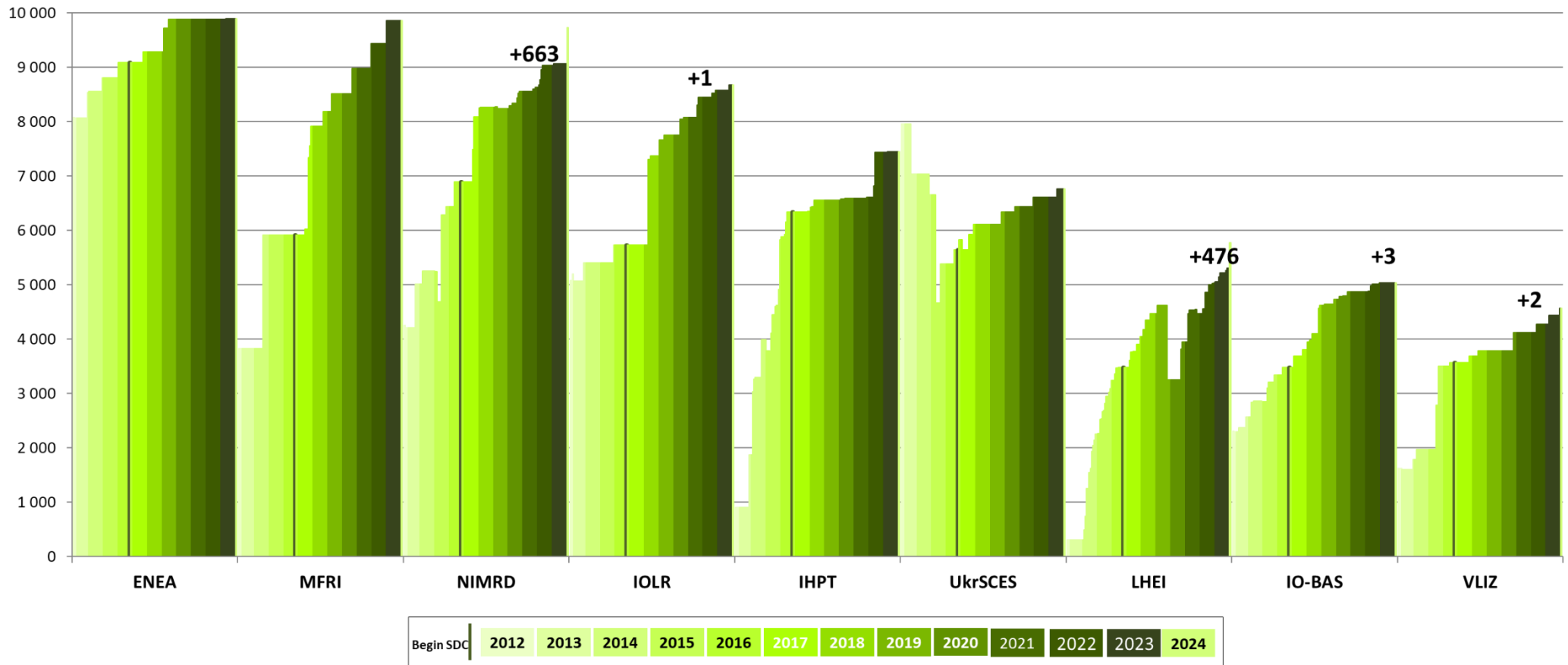
* <b>NIB</b>	National Institute of Biology - NIBMarine Biology Station	Slovenia	10 262	10 306	2 600	2 644	287	6 142
SIO-RAS	P.P.Shirshov Institute of Oceanology-RAS	Russian Federati	13 668	13 668	3 227	3 227	482	-25 155
IMGW	Instytut Meteorologii i Gosodarki Wodnej	Poland	14 668	15 012	1 558	1 902	1 770	14 668
* <b>RBINS</b>	Royal Belgian Institute of Natural Sciences	Belgium	17 259	17 259	4 930	4 930	0	5 726
SYKE	Finnish Environment Institute	Finland	18 811	19 376	12 604	13 169	5 162	18 811
* <b>MI</b>	Marine Institute	Ireland	23 958	36 856	15 709	28 607	0	19 257
* <b>NIOZ</b>	NIOZ Royal Netherlands Institute for Sea Research	Netherlands	23 873	13 317	17 743	7 187	46	19 244
* <b>HCMR</b>	Hellenic Centre for Marine Research	Greece	24 846	28 206	8 857	12 217	260	12 822
* <b>MSI-TALTECH</b>	Marine Systems Institute at Tallinn University of Technology	Estonia	32 102	31 993	5 628	5 519	-3	19 105
METU-IMS	Institute of Marine Sciences, Middle East Technical University	Turkey	34 852	34 909	6 835	6 892	2 222	31 770
* <b>FMI</b>	Finnish Meteorological Institute	Finland	34 957	40 358	21 457	26 858	0	32 746
BSH	German Oceanographic Datacentre (NODC)	Germany	40 686	138 114	1 239	98 667	465	23 408
IEO	IEO/Spanish Oceanographic Institute	Spain	44 138	58 306	3 782	17 950	4 265	12 723
ICES	International Council for the Exploration of the Sea (ICES)	Denmark	100 096	109 736	75 925	85 565	369	100 096
* <b>SMHI</b>	Swedish Meteorological and Hydrological Institute	Sweden	127 190	129 255	32 904	34 969	0	17 663
* <b>IMR</b>	Institute of Marine Research - Norwegian Marine Data Centre (NMD)	Norway	86 384	100 787	-25 253	-10 850	3 808	71 591
* <b>RIHMI-WDC</b>	All-Russia Research Institute of Hydrometeorological Information - World Data Centre	Russian Federati	143 693	143 693	12 361	12 361	12 003	86 568
* <b>NOC-BODC</b>	British Oceanographic Data Centre	United Kingdom	149 401	252 148	39 398	142 145	2 973	101 344
* <b>OGS</b>	OGS (Istituto Nazionale di Oceanografia e di Geofisica Sperimentale)	Italy	160 535	168 604	58 988	67 057	1 922	70 937
SHOM	Shom	France	203 510	234 299	32 176	62 965	3 754	197 087
AU	Aarhus University	Denmark	284 527	284 996	60 572	61 041	609	120 373
* <b>IFREMER</b>	IFREMER / IDM/SISMER	France	865 045	507 598	554 288	196 841	24 240	658 846
			<b>TOTAL</b>	<b>2 543 393</b>	<b>2 507 127</b>	<b>980 161</b>	<b>943 895</b>	<b>70 326 1 675 219</b>

# CDIs number per month and per distributors

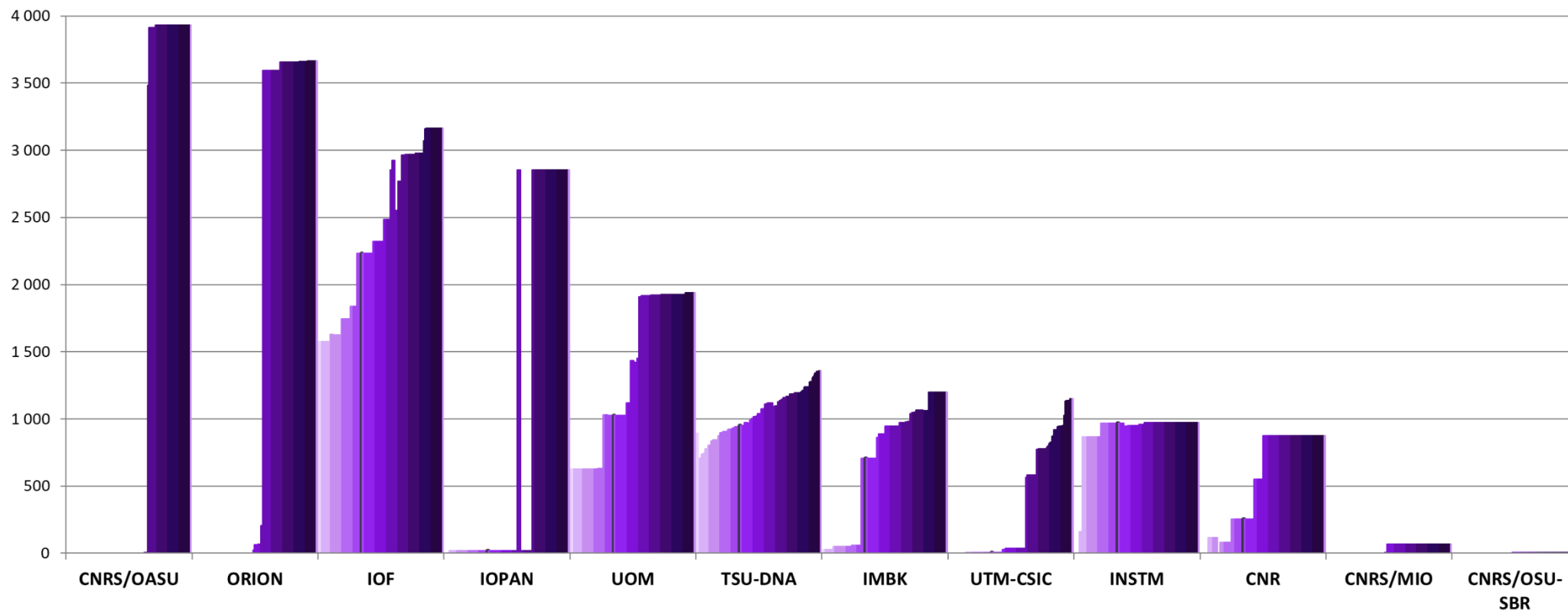




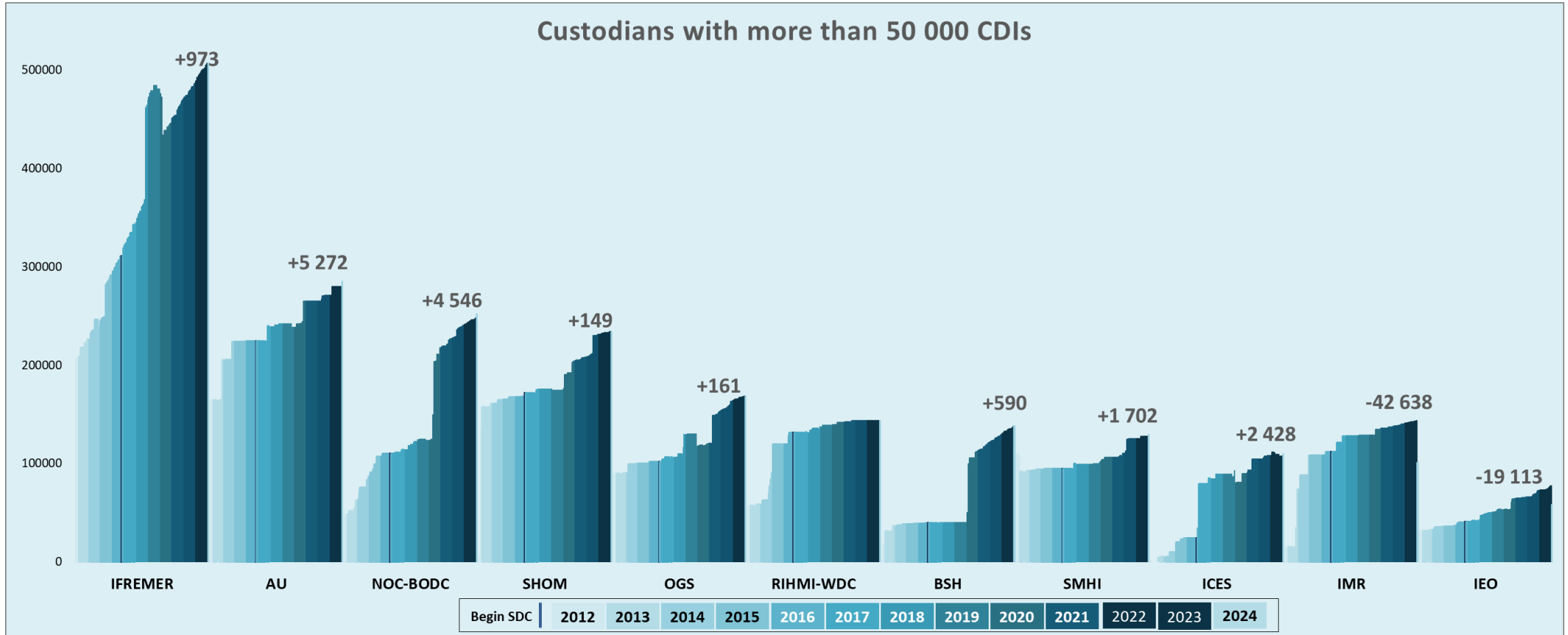
### Distributors with 4 000 < CDI entries < 10 000



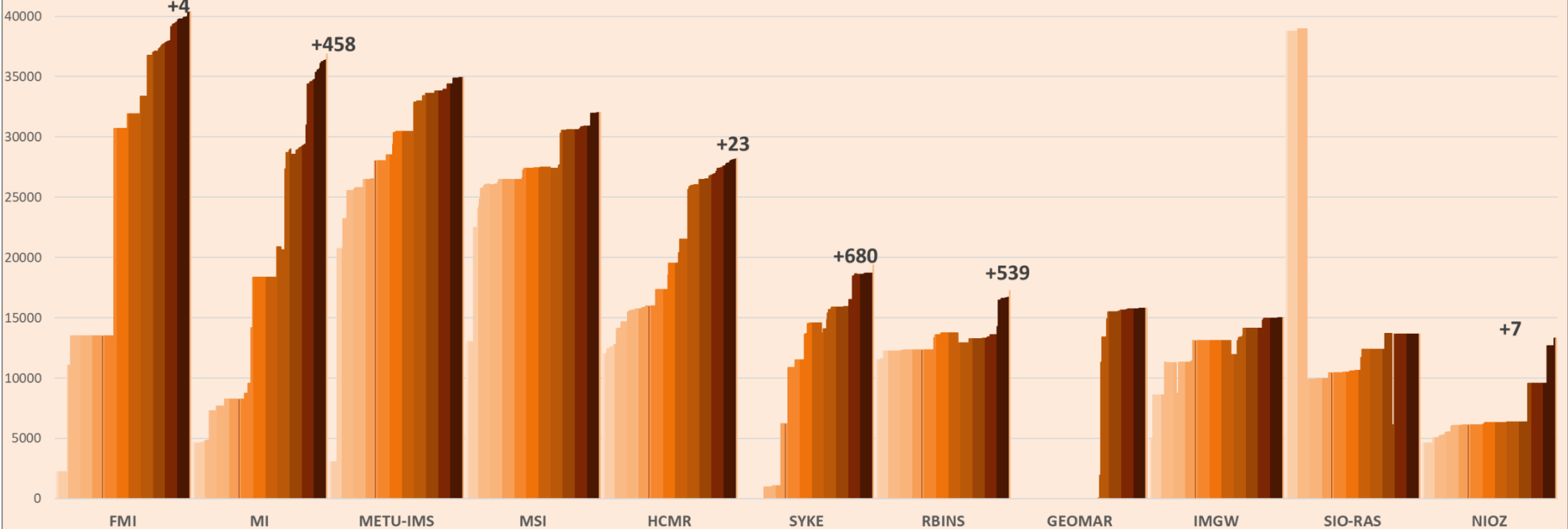
## Distributors with less than 4 000 CDI entries



## CDIs number per month and per custodians



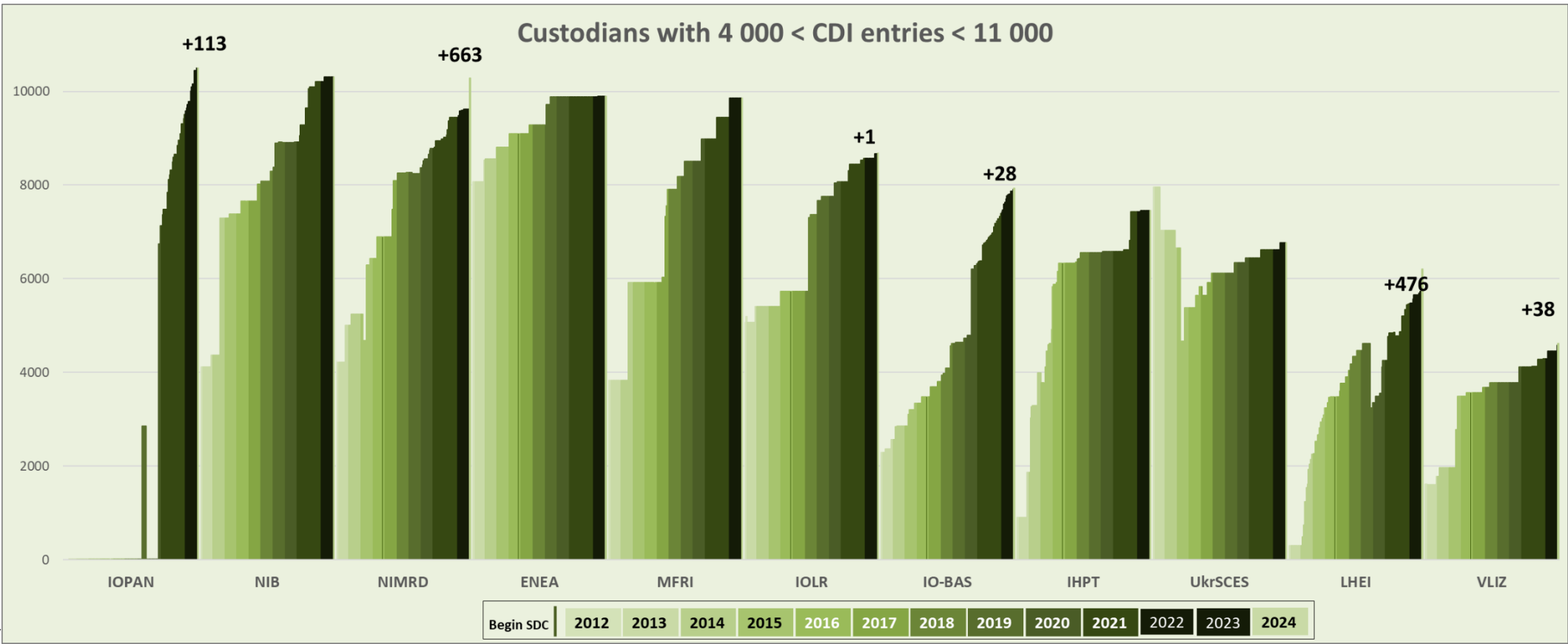
### Custodians with 12 000 < CDIs < 50 000



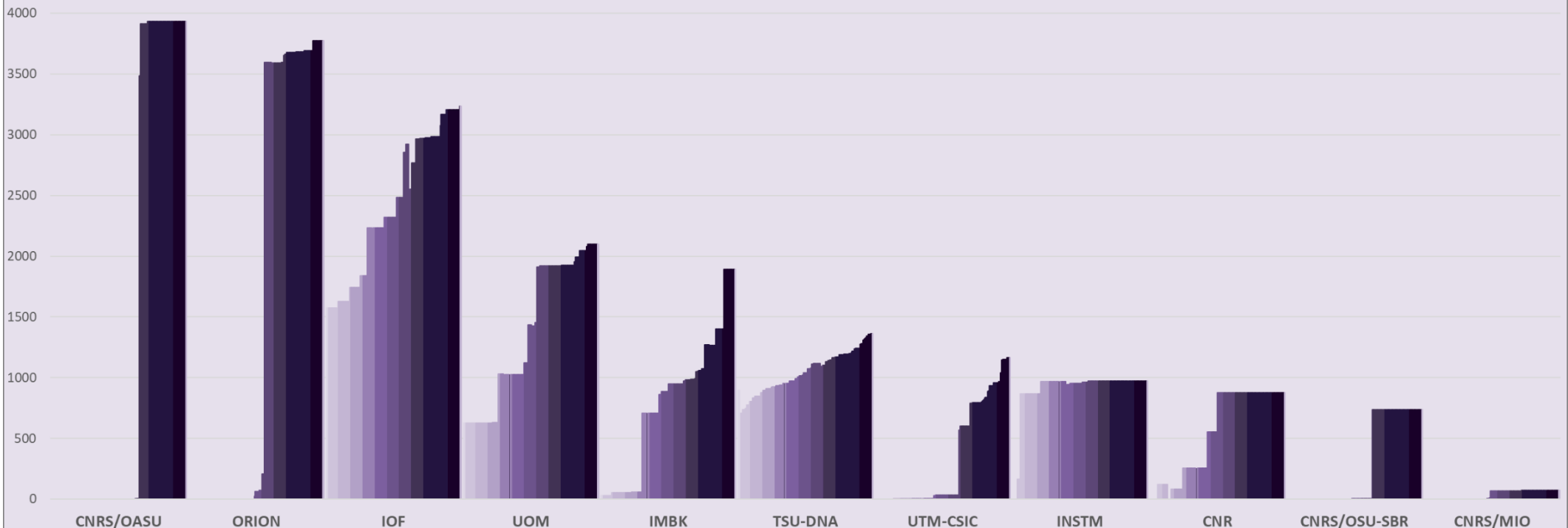
Begin SDC	2012	2013	2014	2015	2016	2017	2018	2019	2020	2021	2022	2023	2024
-----------	------	------	------	------	------	------	------	------	------	------	------	------	------



### Custodians with 4 000 < CDI entries < 11 000

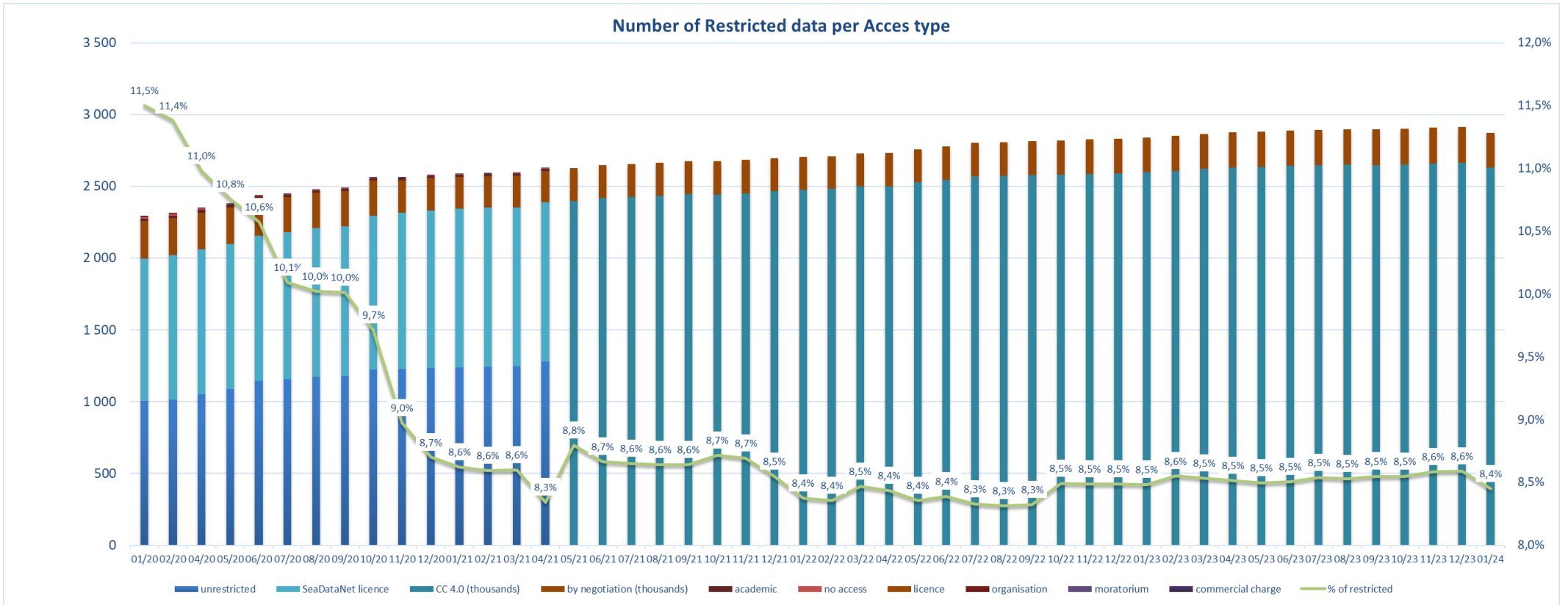


### Custodians with less than 4000 CDI entries



Begin SDC	2012	2013	2014	2015	2016	2017	2018	2019	2020	2021	2022	2023	2024
-----------	------	------	------	------	------	------	------	------	------	------	------	------	------

# CDIs number per acces type



**91,55 % of CDIs are unrestricted .**

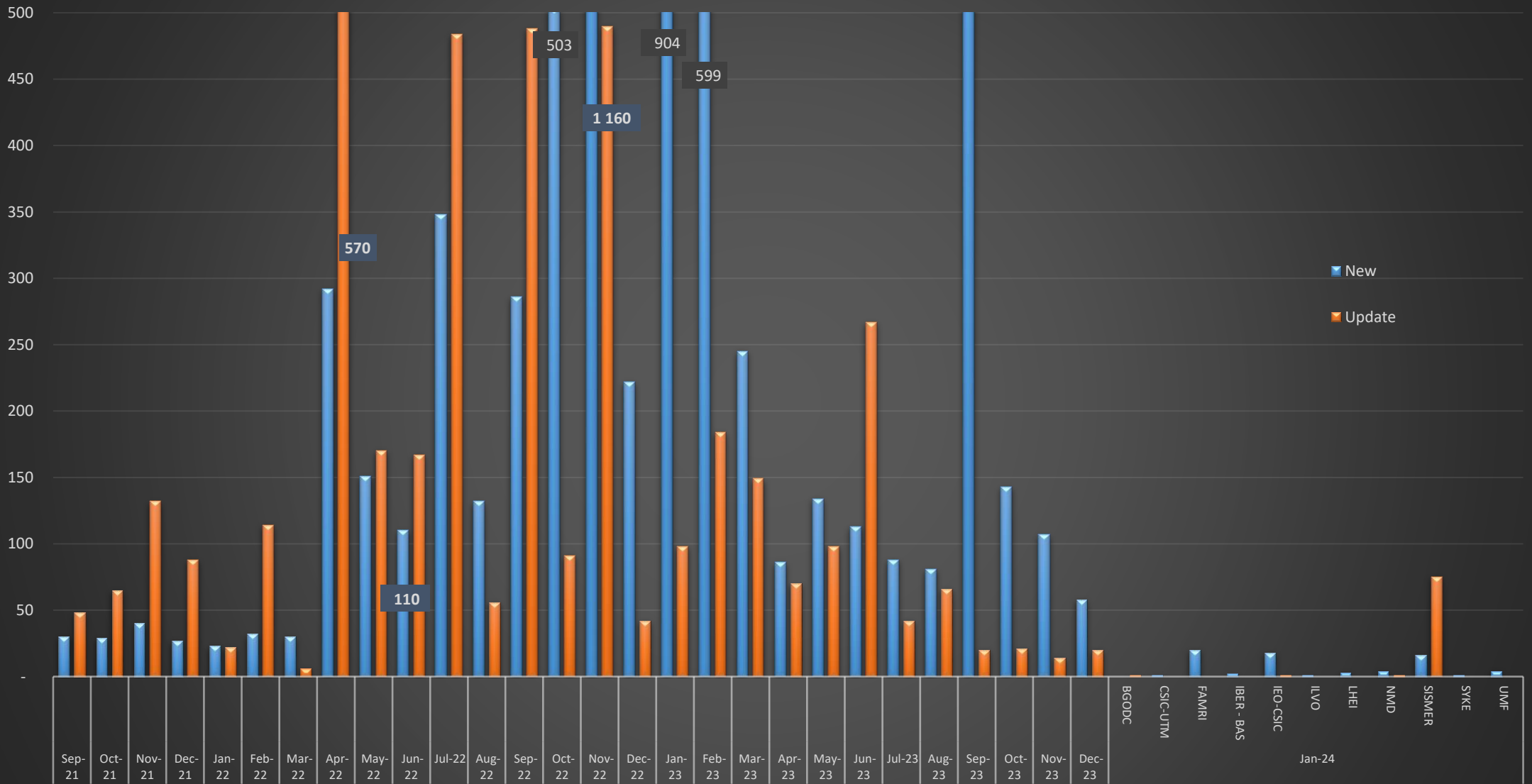
## Statistics on CSR back office

This are the statistics from the new CSR back office allowing all partners to upload their CSR reports in the central catalogue.

This month, 70 new CSRs and 78 updates have been uploaded by 11 partners . Detail of CSR delivery per centre is the following :

CSR workflow Sep 2021 - Jan 2024				janv-24		
	Nb CSRs	New	Update	Nb CSRs	New	Update
2021	Sep-21	30	48	BGODC		1
	Oct-21	29	65	CSIC-UTM	1	
	Nov-21	40	132	FAMRI	20	
	Dec-21	27	88	IBER - BAS	2	
2022	Jan-22	23	22	IEO-CSIC	18	1
	Feb-22	32	114	ILVO	1	
	Mar-22	30	6	LHEI	3	
	Apr-22	292	570	NMD	4	1
	May-22	151	170	SISMER	16	75
	Jun-22	110	167	SYKE	1	
	Jul-22	348	484	UMF	4	
	Aug-22	132	56	<b>Jan-24</b>	<b>70</b>	<b>78</b>
	Sep-22	286	488	<b>Total</b>	<b>7 052</b>	<b>4 160</b>
	Oct-22	503	91			
	Nov-22	1 160	490			
	Dec-22	222	42			
2023	Jan-23	904	98			
	Feb-23	599	184			
	Mar-23	245	149			
	Apr-23	86	70			
	May-23	134	98			
	Jun-23	113	267			
	Jul-23	88	42			
	Aug-23	81	66			
	Sep-23	1 009	20			
	Oct-23	143	21			
Nov-23	107	14				
Dec-23	<b>58</b>	<b>20</b>				

# CSR workflow



## History

### Global counts on all catalogues in 2023

Catalogue	Jan-23	Feb-23	Mar-23	Apr-23	May-23	Jun-23	Jul-23	Aug-23	Sep-23	Oct-23	Nov-23	Dec-23
EDMO	4 723	4 731	4 758	4 763	4 785	4 833	4 838	4 841	4 852	4 858	4 873	4 896
EDMED	4 327	4 328	4 328	4 331	4 332	4 333	4 333	4 333	4 337	4 339	4 345	4 347
EDMERP	3 427	3 431	3 433	3 434	3 442	3 446	3 454	3 454	3 462	3 466	3 470	3 472
EDIOS-PRG	372	372	372	372	372	372	372	372	372	373	373	373
-Series	17 020	17 020	17 020	17 020	17 020	17 020	17 020	17 020	17 038	17 040	17 040	17 040
CSR	65 231	65 804	66 049	66 133	66 264	66 408	66 457	66 538	67 477	67 647	67 720	67 774
CDI	2 837 353	2 851 301	2 865 680	2 874 806	2 880 666	2 887 335	2 894 186	2 897 449	2 896 333	2 900 312	2 909 377	2 914 830

### Global counts on all catalogues in 2022

Catalogue	Jan-22	Feb-22	Mar-22	Apr-22	May-22	Jun-22	Jul-22	Aug-22	Sep-22	Oct-22	Nov-22	Dec-22
EDMO	4 521	4 526	4 533	4 551	4 560	4 584	4 588	4 616	4 634	4 667	4 691	4 703
EDMED	4 281	4 292	4 294	4 296	4 298	4 306	4 307	4 309	4 309	4 321	4 322	4 324
EDMERP	3 364	3 365	3 367	3 367	3 373	3 374	3 395	3 397	3 401	3 406	3 413	3 423
EDIOS-PRG	371	371	371	371	371	371	371	372	372	372	372	372
-Series	16 657	16 666	16 666	16 666	16 666	16 666	16 666	16 667	16 667	16 667	17 020	17 020
CSR	64 815	64 895	65 009	65 328	65 354	61 820	62 096	62 226	62 512	63 032	64 141	64 363
CDI	2 702 535	2 708 033	2 728 713	2 731 329	2 758 139	2 777 414	2 801 184	2 806 350	2 813 360	2 819 264	2 826 367	2 831 011

### Global counts on all catalogues in 2021

Catalogue	Jan-21	Feb-21	Mar-21	Apr-21	May-21	Jun-21	Jul-21	Aug-21	Sep-21	Oct-21	Nov-21	Dec-21
EDMO	4 403	4 413	4 434	4 441	4 460	4 470	4 481	4 486	4 487	4 497	4 502	4 509
EDMED	4 262	4 262	4 263	4 264	4 267	4 268	4 273	4 274	4 278	4 278	4 278	4 279
EDMERP	3 311	3 317	3 326	3 330	3 335	3 339	3 341	3 341	3 348	3 354	3 354	3 355
EDIOS-PRG	371	370	371	371	371	371	371	371	371	371	371	371
-Series	16 653	16 654	16 656	16 656	16 656	16 656	16 656	16 656	16 657	16 657	16 657	16 657
CSR	60 783	60 822	61 276	61 343	63 030	63 079	64 458	64 567	64 624	64 667	64 722	64 764
CDI	2 584 536	2 591 431	2 596 096	2 625 498	2 626 427	2 646 959	2 656 975	2 663 701	2 676 060	2 676 121	2 683 271	2 697 131

## Global counts on all catalogues in 2020

Catalogue	Jan-20	Feb-20	Mar-20	Apr-20	May-20	Jun-20	Jul-20	Aug-20	Sep-20	Oct-20	Nov-20	Dec-20
EDMO	4 249	4 267	4 278	4 291	4 298	4 316	4 320	4 331	4 349	4 365	4 374	4 388
EDMED	4 225	4 227	4 228	4 232	4 234	4 245	4 247	4 249	4 250	4 252	4 254	4 259
EDMERP	3 166	3 170	3 177	3 190	3 205	3 239	3 254	3 278	3 289	3 300	3 300	3 307
EDIOS-PRG	368	370	370	370	370	370	370	370	370	370	370	370
-Series	16 645	16 645	16 645	16 645	16 645	16 645	16 645	16 651	16 652	16 652	16 652	16 652
CSR	57 920	58 136	58 177	58 261	58 315	58 560	58 935	59 414	60 159	59 599	60 167	60 995
CDI	2 289 624	2 311 070	2 333 919	2 349 773	2 375 117	2 433 487	2 447 194	2 474 835	2 487 180	2 561 271	2 563 223	2 576 807

## Global counts on all catalogues in 2019

Catalogue	Jan-19	Feb-19	Mar-19	Apr-19	May-19	Jun-19	Jul-19	Aug-19	Sep-19	Oct-19	Nov-19	Dec-19
EDMO	4 105	4 110	4 117	4 131	4 138	4 177	4 181	4 190	4 195	4 211	4 227	4 234
EDMED	4 198	4 198	4 203	4 205	4 207	4 205	4 205	4 206	4 209	4 210	4 213	4 223
EDMERP	3 125	3 128	3 133	3 133	3 135	3 138	3 144	3 144	3 149	3 159	3 163	3 164
EDIOS-PRG	363	363	363	363	363	363	363	363	367	367	367	367
CSR	56 877	56 943	57 089	57 148	57 267	57 331	57 437	57 474	57 537	57 637	57 749	57 866
CDI	2 289 929	2 294 771	2 299 924	2 302 286	2 306 093	2 316 223	2 316 610	2 316 610	2 316 610	2 281 710	2 283 087	2 288 566

## Global counts on all catalogues in 2018

Catalogue	Jan-18	Feb-18	Mar-18	Apr-18	May-18	Jun-18	Jul-18	Aug-18	Sep-18	Oct-18	Nov-18	Dec-18
EDMO	3 927	3 931	3 940	3 952	3 968	3 981	3 997	3 999	4 010	4 021	4 068	4 078
EDMED	4 154	4 158	4 162	4 166	4 166	4 170	4 173	4 189	4 191	4 182	4 187	4 187
EDMERP	3 042	3 048	3 051	3 054	3 058	3 062	3 068	3 071	3 073	3 083	3 105	3 106
EDIOS-PRG	362	362	362	362	362	362	363	363	363	363	363	363
CSR	55 399	55 485	55 630	55 709	55 783	55 937	55 982	56 085	56 316	56 436	56 694	56 783
CDI	2 101 090	2 106 680	2 110 688	2 122 824	2 137 067	2 146 266	2 148 856	2 152 074	2 159 216	2 262 108	2 276 264	2 283 986

## Global counts on all catalogues in 2017

Catalogue	Jan-17	Feb-17	Mar-17	Apr-17	May-17	Jun-17	Jul-17	Aug-17	Sep-17	Oct-17	Nov-17	Dec-17
EDMO	3 802	3 812	3 826	3 832	3 838	3 869	3 880	3 886	3 891	3 899	3 915	3 920
EDMED	4 082	4 085	4 084	4 096	4 099	4 101	4 101	4 108	4 131	4 135	4 142	4 149
EDMERP	2 981	2 988	2 990	2 990	2 992	2 993	3 000	3 016	3 018	3 020	3 026	3 036
EDIOS-PRG	362	362	362	362	362	362	362	362	362	362	362	362
CSR	53 850	53 892	53 974	54 175	54 218	54 217	54 250	54 387	54 795	54 949	55 052	55 178
CDI	1 947 452	1 949 991	1 955 483	1 968 060	1 971 285	1 974 509	1 977 738	1 980 818	2 000 402	2 063 832	2 081 618	2 093 605

## Global counts on all catalogues in 2016

Catalogue	Jan-16	Feb-16	Mar-16	Apr-16	May-16	Jun-16	Jul-16	Aug-16	Sep-16	Oct-16	Nov-16	Dec-16
EDMO	3 671	3 670	3 686	3 691	3 695	3 712	3 730	3 733	3 747	3 758	3 775	3 791
EDMED	4 060	4 066	4 007	4 061	4 062	4 067	4 069	4 074	4 076	4 077	4 077	4 077
EDMERP	2 903	2 961	2 961	2 961	2 966	2 971	2 971	2 974	2 975	2 975	2 975	2 979
EDIOS-PRG	362	362	362	362	362	362	362	362	362	362	362	362
CSR	54 182	54 339	54 422	55 100	55 119	55 178	55 216	55 238	55 264	53 484	53 537	53 669
CDI	1 813 947	1 819 492	1 824 402	1 825 957	1 844 660	1 854 787	1 858 162	1 864 378	1 869 790	1 873 823	1 884 034	1 936 759

## Global counts on all catalogues in 2015

Catalogue	Jan-15	Feb-15	Mar-15	Apr-15	May-15	Jun-15	Jul-15	Aug-15	Sep-15	Oct-15	Nov-15	Dec-15
EDMO	3 210	3 223	3 275	3 324	3 422	3 532	3 556	3 564	3 583	3 619	3 639	3 659
EDMED	3 980	3 982	3 984	3 984	3 990	3 992	4 014	4 034	4 053	4 055	4 054	4 060
EDMERP	2 858	2 866	2 878	2 878	2 886	2 898	2 900	2 900	2 901	2 903	2 903	2 903
EDIOS-PRG	360	360	361	361	361	361	361	361	362	362	362	362
CSR	52 977	53 028	53 238	53 304	53 400	53 463	53 553	53 602	53 836	53 938	54 057	54 135
CDI	1 714 285	1 721 708	1 721 604	1 720 724	1 709 958	1 764 762	1 767 715	1 779 199	1 784 327	1 796 791	1 800 648	1 809 541

## Global counts on all catalogues in 2014

Catalogue	Jan-14	Feb-14	Mar-14	Apr-14	May-14	Jun-14	Jul-14	Aug-14	Sep-14	Oct-14	Nov-14	Dec-14
EDMO	2 451	2 467	2 651	2 685	2 688	2 692	2 693	2 701	2 875	3 103	3 199	3 212
EDMED	3 944	3 945	3 945	3 947	3 948	3 955	3 957	3 960	3 961	3 962	3 963	3 965
EDMERP	2 787	2 808	2 830	2 832	2 834	2 837	2 841	2 844	2 847	2 849	2 850	2 857
EDIOS-PRG	359	360	360	360	360	360	360	360	360	360	360	360
CSR	51 724	51 788	51 941	52 012	52 012	52 151	52 190	52 506	52 566	52 603	52 650	52 657
CDI	1 498 793	1 537 556	1 558 428	1 566 528	1 569 847	1 575 035	1 604 916	1 612 514	1 621 749	1 626 904	1 631 984	1 662 548



## Global counts on all catalogues in 2012/2013

Catalogue	Sept-12	Oct-12	Nov-12	Dec-12	Jan-13	Feb-13	Mar-13	Apr-13	May-13	Aug-13	Sep-13	Oct-13	Nov-13	Dec-13
<b>EDMO</b>	2 261	2 283	2 296	2 304	2 330	2 351	2 359	2 362	2 370	2 384	2 404	2 404	2 423	2 431
<b>EDMED</b>	3 834	3 834	3 834	3 834	3 834	3 834	3 882	3 885	3 885	3 889	3 901	3 901	3 925	3 944
<b>EDMERP</b>	2 617	2 637	2 667	2 674	2 683	2 684	2 685	2 686	2 690	2 698	2 710	2 710	2 772	2 772
<b>EDIOS-PRG</b>	350	350	350	350	353	353	353	353	354	356	358	359	359	359
<b>CSR</b>	48 824	48 975	49 326	49 750	50 917	51 033	51 276	51 647	50 973	51 181	51 207	51 259	51 588	51 730
<b>CDI</b>	1 088 322	1 097 399	1 241 010	1 267 669	1 274 982	1 291 491	1 302 629	1 311 827	1 317 191	1 350 455	1 356 245	1 360 236	1 386 446	1 496 950