



Data access services

The SeaDataNet infrastructure links 40 national oceanographic data centres and marine data centres from 35 countries riparian to all European seas. The data centres manage large sets of marine and ocean data, originating from their own institutes and from other parties in their country, in a variety of data management systems and configurations. A major objective and challenge in SeaDataNet is to provide an integrated and harmonised overview and access to these data resources, using a distributed network approach.

This is achieved by developing and implementing the

[Common Data Index service](#)

, that gives users a highly detailed insight in the availability and geographical spreading of marine data across the different data centres across Europe. The CDI provides an ISO19115 based index (metadatabase) to individual data sets (such as samples, timeseries, profiles, trajectories, etc) and it provides a unique interface to online data access.

- **[Common Data Index \(CDI\)](#)**

- **[How to contribute?](#)**

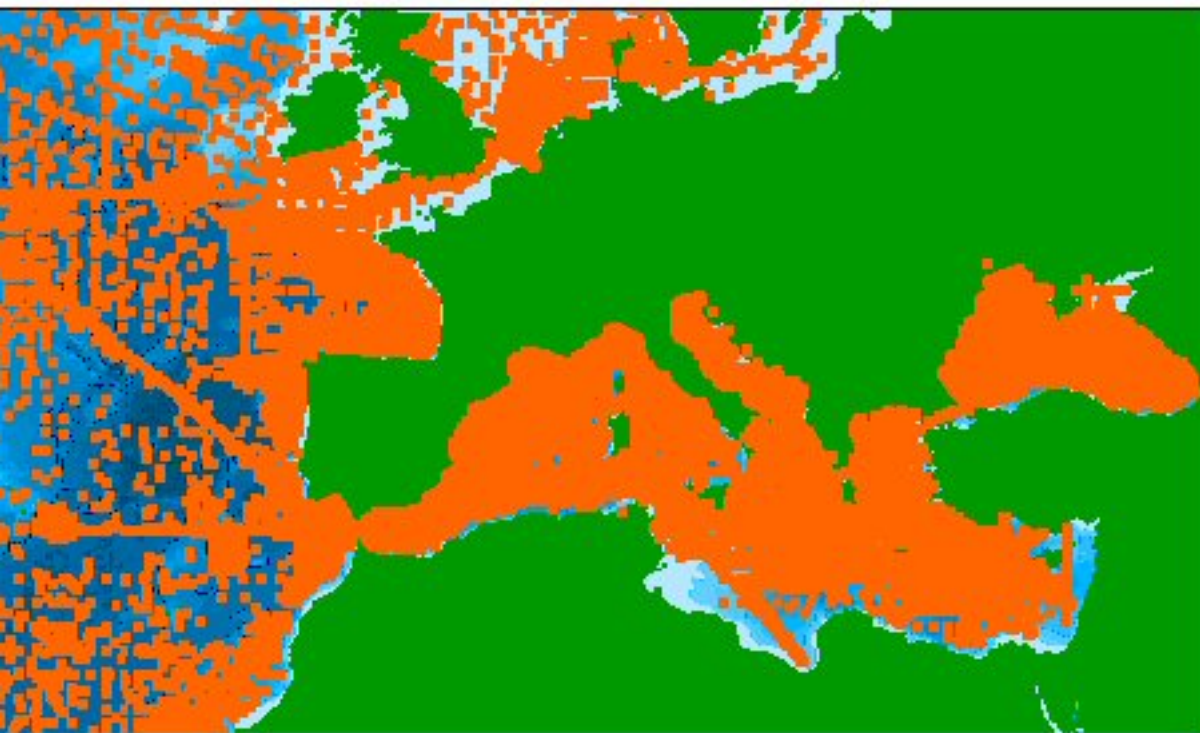
Pan-European infrastructure for Ocean & Marine Data

Common Data Index (CDI) V1 - Access to Data

Proceed to check out

Reset basket

Summary



Layer control ?

- CDI entries Points ?
- CDI entries Areas ?
- Main Sea-areas ?
- Regional Seas ?
- Grid lines ?
- Partner locations ?

Display all selected records

Only selected records

Zoom to selected

Add to basket

20 50 100 Records

Go

| Found 457958 |

#	Data set name	Variables measured	Instrument /
<input type="checkbox"/>	RNODC_Bottle_10855	Administration and dimensions > Administration and dimensions Physical oceanography > Water column temperature and salinity	discrete water
<input type="checkbox"/>	RNODC_Bottle_10855	Administration and dimensions > Administration and dimensions Physical oceanography	discrete water