



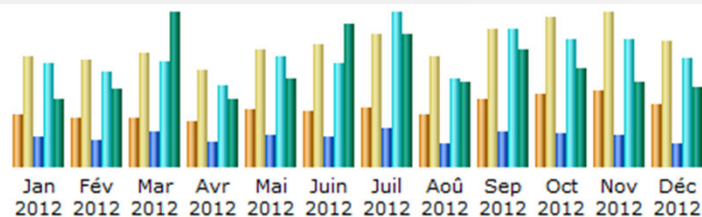
SeaDataNet

PAN-EUROPEAN INFRASTRUCTURE
FOR OCEAN & MARINE DATA
MANAGEMENT

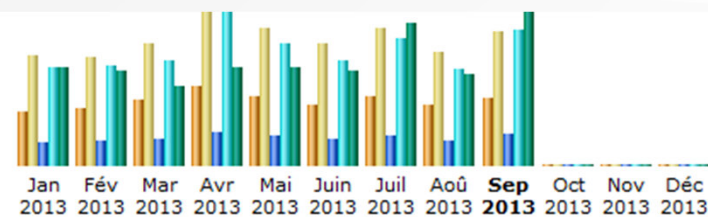
Usage Statistics

By Dick M.A. Schaap - MARIS

Visits to SeaDataNet portal - hosted at IFREMER

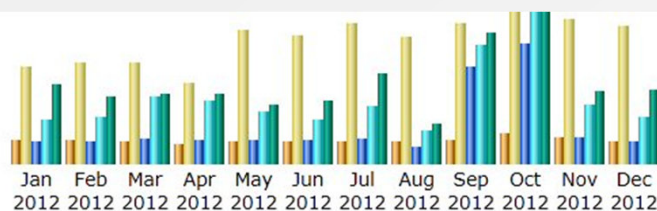


Mois	Visiteurs différents	Visites	Pages	Hits	Bande passante
Jan 2012	1674	3562	26287	92053	2.68 Go
Fév 2012	1569	3429	23409	85039	3.13 Go
Mar 2012	1581	3640	30806	93987	6.15 Go
Avr 2012	1443	3130	21712	72214	2.68 Go
Mai 2012	1838	3765	27706	99462	3.53 Go
Juin 2012	1766	3946	27486	93079	5.70 Go
Juil 2012	1922	4251	34090	137954	5.32 Go
Aoû 2012	1653	3551	20339	78598	3.37 Go
Sep 2012	2174	4441	32155	123672	4.68 Go
Oct 2012	2364	4843	29663	114064	3.95 Go
Nov 2012	2451	4958	28577	113749	3.37 Go
Déc 2012	2034	4038	19983	98089	3.18 Go
Total	22469	47554	322213	1201960	47.75 Go

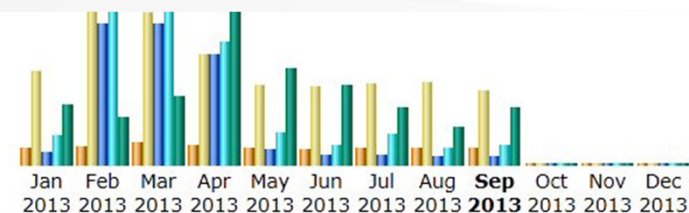


Mois	Visiteurs différents	Visites	Pages	Hits	Bande passante
Jan 2013	2333	4776	24993	108006	3.84 Go
Fév 2013	2448	4741	26740	109981	3.67 Go
Mar 2013	2844	5318	29457	117004	3.11 Go
Avr 2013	3424	6670	36523	169943	3.80 Go
Mai 2013	3030	5937	32419	134687	3.81 Go
Juin 2013	2651	5299	29418	115470	3.69 Go
Juil 2013	3021	5975	32966	140467	5.55 Go
Aoû 2013	2617	4917	26673	106842	3.53 Go
Sep 2013	2951	5819	35121	150114	5.99 Go
Oct 2013	0	0	0	0	0
Nov 2013	0	0	0	0	0
Déc 2013	0	0	0	0	0
Total	25319	49452	274310	1152514	36.99 Go

Visits to *seadatanet.maris2.nl* with CDI, EDMERP, EDIOS and EDMO



Month	Unique visitors	Number of visits	Pages	Hits	Bandwidth
Jan 2012	1,633	6,965	72,135	148,041	5.93 GB
Feb 2012	1,644	7,379	72,414	161,308	4.96 GB
Mar 2012	1,544	7,326	84,548	226,350	5.14 GB
Apr 2012	1,425	5,907	78,535	212,059	5.14 GB
May 2012	1,483	9,661	75,624	177,718	4.36 GB
Jun 2012	1,542	9,357	78,955	149,445	4.66 GB
Jul 2012	1,598	10,110	83,231	191,124	6.60 GB
Aug 2012	1,546	9,232	52,208	109,677	2.96 GB
Sep 2012	1,684	10,108	327,746	403,063	9.70 GB
Oct 2012	2,097	11,092	404,793	518,689	11.41 GB
Nov 2012	1,898	10,435	88,736	199,183	5.42 GB
Dec 2012	1,528	9,945	74,458	155,671	5.48 GB
Total	19,622	107,517	1,493,383	2,652,328	71.75 GB



Month	Unique visitors	Number of visits	Pages	Hits	Bandwidth
Jan 2013	1,868	10,255	71,097	166,245	6.14 GB
Feb 2013	2,082	17,215	816,860	907,070	4.94 GB
Mar 2013	2,470	16,700	811,844	910,536	7.10 GB
Apr 2013	2,153	12,241	642,028	715,047	16.06 GB
May 2013	1,836	8,714	85,349	190,939	9.92 GB
Jun 2013	1,691	8,582	51,567	111,661	8.03 GB
Jul 2013	1,886	8,861	59,989	174,574	5.80 GB
Aug 2013	1,751	9,060	40,832	94,222	3.84 GB
Sep 2013	1,736	8,087	44,945	112,823	5.81 GB
Oct 2013	0	0	0	0	0
Nov 2013	0	0	0	0	0
Dec 2013	0	0	0	0	0
Total	17,473	99,715	2,624,511	3,383,117	67.65 GB

Monthly averages from CDI service on other portals

2012 monthly averages					2013 monthly averages				
Domain	Users	Visits	Pages	Hits	Domain	Users	Visits	Pages	Hits
CaspInfo	790	983	2287	15757	CaspInfo	747	1166	2995	14752
UBSS	830	1087	3357	34264	UBSS	977	1507	4309	13805
EMODNet Hydrography	602	1020	13959	37023	EMODNet Hydrography	612	1246	16960	37023
EMODNet Chemistry	46	61	1405	3735	EMODNet Chemistry	39	55	1212	2413
EMODNet Physics	42	121	4823	7797	EMODNet Physics	9	23	1773	2187
Geo-Seas	508	947	10983	38651	Geo-Seas	610	1409	12528	32977
	2818	4219	36814	137227		2994	5406	39777	103157



SeaDataNet

PAN-EUROPEAN INFRASTRUCTURE
FOR OCEAN & MARINE DATA
MANAGEMENT

Monthly averages of SeaDataNet services overall

Domain	2013 monthly averages		
	Users	Visits	Pages
SeaDataNet portal	3000	5500	32000
Directories	1700	8000	50000
Other portals	3000	5000	40000
TOTAL	7700	18500	122000
Excl. CSR (BSH), Vocabs! (BODC) and EDMED (BODC)			



SeaDataNet

PAN-EUROPEAN INFRASTRUCTURE
FOR OCEAN & MARINE DATA
MANAGEMENT

Transactions in SDN2 CDI system – RSM

- **Since 1st October 2011:**
- Number of requests: **299589 data sets**
- Done by: **320 registered users**
- Extra: ROBOT user for WP10 and DM monitoring

Transactions in SDN2 CDI system – RSM

Partner	EDMO code	Number of requests	Number of downloaded files	Partner	EDMO code	Number of requests	Number of downloaded files	Partner	EDMO code	Number of requests	Number of downloaded files
BODC	42	29783	28442	YuGNiro	688	21634	20634	INSTM	1232	93	93
BGS	43	630	609	IOBAS\ BGODC	692	13315	12470	GAMMA	1265	4513	4467
BSH	96	8858	8754	TSU	693	5425	4612	NGU	1415	643	631
OGS	120	78471	68959	IMS-METU	696	5724	5724	BGR	1496	962	387
CNR-LaSpezia	134	38	38	NIMRD	697	5230	5001	RWS	1526	3935	1698
ENEA	136	12984	12621	LIAE	698	330	310	GEUS	1543	96	96
CNR ISMAR Bologna	145	22	0	IZOR	700	4042	4040	IGG-NRC	1545	552	552
IFR	191	1778	1389	IOI	708	1245	1245	BSCS	1546	822	822
IMWM	193	552	550	CyOC	711	5584	5582	MUMM	1578	10264	9674
IOPAN	195	36	36	MSI	713	14849	14828	EGK	1609	846	846
HCMR\ HNODC	269	32184	28003	MHI	727	104857	104486	NOA	1703	20	16
IGME	310	71	71	NERI	729	94336	94133	FMI	1725	3237	3237
IEO	353	45060	34114	ICES	730	528	528	UCC	1848	265	265
GSI	366	102	102	SHODB	731	52	31	EPA	2108	620	620
MI	396	4896	4871	BSTU	732	1227	973	LNEG	2124	38	31
VLIZ	422	4943	4943	SNU-FF	733	1507	1486	UB	2172	12	12
IFREMER	486	235386	223440	IKI-RAS	761	462	2	AU	2176	517	327
SHOM	540	152959	152281	DEU-MIST	801	3508	842	IGS	2228	140	140
SMHI	545	109138	109012	IU-IMS	802	473	473	UMG	2230	2674	2674
CDG\ CNRS	565	20	16	IBSS	840	2452	2360	DHMO	2231	145	55
MRI	583	9762	9762	MB-UHI	841	4163	4155	LU	2239	475	449
IHPT	590	1432	1428	RSHU	924	71	71	OGS-RIMA	2276	181	23
PGI	609	2403	2108	NIMH	961	2405	2062	IMBK	2432	113	113
IMR	612	15041	14948	IOLR	963	8894	8693	OceanWise	2607	122	5
NIOZ	630	39385	20407	BGRM	1022	943	942	NCSD	3092	176	5
KNMI	630	839	313	UkrSCES	1167	6628	6628	PANGAEA	3234	1427	927
NIOO	633	6170	2734	USRIEP	1168	16	16				
TNO	635	769	98	ONU	1169	233	170	SUBTOTAL3		32888	28165
RIHMI	681	61624	60756	IGewe	1228	21	21	TOTAL		1206784	1129390
SIO-RAS	685	4256	3755	MBSS\ NIB	1229	4150	4147				

Monitoring CDI system by Robot shopper

Partner	EDMO code	Number of successful robot orders	Total number of orders	Percentage	Partner	EDMO code	Number of successful robot orders	Total number of orders	Percentage	Partner	EDMO code	Number of successful robot orders	Total number of orders	Percentage
BODC	42	472	480	98,33333333	TSU	693	456	480	95	BGR	1496	461	480	96,04166667
BGS	43	472	480	98,33333333	IMS-METU	696	435	480	90,625	RWS	1526	467	480	97,29166667
BSH	96	462	480	96,25	NIMRD	697	463	480	96,45833333	GEUS	1543	456	480	95
OGS	120	463	480	96,45833333	LIAE	698	464	480	96,66666667	IGG-NRC	1545	470	480	97,91666667
CNR- LaSpezia	134	78	80	97,5	IZOR	700	469	480	97,70833333	BSCS	1546	350	480	72,91666667
ENEA	136	468	480	97,5	IOI	708	470	480	97,91666667	MUMM	1578	464	480	96,66666667
IFR	191	462	480	96,25	CyOC	711	468	480	97,5	EGK	1609	434	480	90,41666667
IMWM	193	246	248	99,19354839	MSI	713	471	480	98,125	NOA-GEIN	1703	428	480	89,16666667
IOPAN	195	170	171	99,41520468	MHI-MIST	727	450	480	93,75	FMI	1725	475	480	98,95833333
HCMR\HNODC	269	460	480	95,83333333	NERI	729	465	480	96,875	UCC	1848	463	480	96,45833333
IGME	310	474	480	98,75	ICES	730	152	152	100	EPA	2108	467	480	97,29166667
IEO	353	455	480	94,79166667	SHOBB	731	79	133	59,39849624	LNEG	2124	461	480	96,04166667
GSI	366	476	480	99,16666667	BSTU	732	435	480	90,625	UB	2172	397	412	96,3592233
MI	396	476	480	99,16666667	SNU-FF	733	455	480	94,79166667	AU	2176	427	480	88,95833333
VLIZ	422	476	480	99,16666667	IKI-RAS	761	406	480	84,58333333	IGS	2228	440	480	91,66666667
IFREMER	486	464	480	96,66666667	DEU-MIST	801	442	480	92,08333333	UMG	2230	404	480	84,16666667
SHOM	540	279	284	98,23943662	IU-IMS	802	466	480	97,08333333	DHMO	2231	442	480	92,08333333
SMHI	545	477	480	99,375	IBSS	840	476	480	99,16666667	LU	2239	437	480	91,04166667
CDG\ CNRS	565	440	480	91,66666667	MB-UHI	841	413	480	86,04166667	OGS-RIMA	2276	436	480	90,83333333
MRI	583	470	480	97,91666667	RSHU	924	192	192	100	IMBK	2432	322	328	98,17073171
IHPT	590	473	480	98,54166667	NIMH-BAS	961	476	480	99,16666667	NCSD	3092	296	305	97,04918033
PGI	609	476	480	99,16666667	IOLR	963	474	480	98,75	PANGEA	3234	121	133	90,97744361
IMR	612	474	480	98,75	BGRM	1022	455	480	94,79166667					
NIOZ	630	469	480	97,70833333	UkrSCES	1167	458	480	95,41666667					
KNMI	632	433	480	90,20833333	USRIEP	1168	469	480	97,70833333					
NIOO-CEME	633	477	480	99,375	ONU	1169	463	480	96,45833333					
TNO	635	475	480	98,95833333	IGWE	1228	72	73	98,63013699					
RIHMI	681	447	480	93,125	NIBI MBSS	1229	339	346	97,97687861					
IORAS	685	387	480	80,625	INSTM	1232	162	192	84,375					
YuGNiro	688	452	480	94,16666667	GAMMA	1265	430	480	89,58333333					
IOBAS\ BGODC	692	476	480	99,16666667	NGU	1415	469	480	97,70833333					



SeaDataNet

PAN-EUROPEAN INFRASTRUCTURE
FOR OCEAN & MARINE DATA
MANAGEMENT

Conclusions:

- **Increasing number of users and transactions**
- **However, we must do better!**
 - **More promotion and dissemination required**
 - **More use cases at the portal**
 - **More interesting tutorials at the portal**