



# SeaDataNet

PAN-EUROPEAN INFRASTRUCTURE  
FOR OCEAN & MARINE DATA  
MANAGEMENT

## ***WP2 – Short presentation of monitoring portal & Monitoring report of 2<sup>nd</sup> 18 Months, including statistics from RSM***

A. Lykiardopoulos, S. Balopoulou, S. Iona (HCMR-HNODC)  
M. Eliezer (OGS)

*SeaDataNet II – 3<sup>rd</sup> plenary meeting  
24-25 September 2014 – Split, Croatia*

## ***A. Short presentation of monitoring portal***

# ***Introduction to Network Monitoring***

- The term **network monitoring** describes the use of a system that constantly monitors a computer network for slow or failing components and notifies (via email, SMS, e.t.c.) the network and local administrators in case of outages.
- In the framework of SeaDataNetII project a network monitoring system was developed in order to monitor the **SeaDataNet components** (Download Managers, Central Catalogues, Common Vocabularies, Central Authentication Service) that is based on **Nagios** software.
- To correct the SDN modules' malfunctions local administrators need more than a notification email, they need to have access to Nagios log files to get more detailed information about the source of the problem.
- A user friendly **Monitoring Portal** is designed and developed for local administrators who are responsible to maintain their services up and running.

# ***Monitoring Portal: Services***

The SeaDataNet components that are monitored are divided into two groups of services:

- ✓ The **Core services**, which are centrally-based provided services:
  - Common Data Index (CDI) portal
  - European Directory of Marine Organisations (EDMO) portal
  - European Directory of the initial Ocean-observing Systems (EDIOS) portal
  - European Directory of Marine Environmental Research Projects (EDMERP) portal
  - European Directory of Marine Environmental Data Sets (EDMED) portal
  - Cruise Summary Reports (CSR) portal
  - SeaDataNet homepage
  - SDN Central Authentication Service
  - Common Vocabularies Web Services
  - Request Status Manager (RSM) soon.
- ✓ The **Local services**, which are services that are provided by the partners' infrastructures.
  - 86 Download Managers supporting SeaDataNet, GeoSeas, UBSS, EMODNet-Chemistry and EMODNet-Bathymetry projects

# Monitoring Portal: Web interface

- ✓ The Monitoring Portal is an **online web interface** that can be accessed by **members only** either via the <http://seadatanetnm.hcmr.gr/portal> URL or via the **SeaDataNet website** (<http://www.seadatanet.org>) under the **Standards & Software** menu and as an icon at the top right of the page, next to extranet icon.
- ✓ **Members are:** people whose SDN service(s) is(are) monitored by the system (e.g. Download Manager), who are set by their organization as responsible for this(these) service(s) up and running smoothly, have obtained a SeaDataNet user ID.
- ✓ **Note: To have access to the portal's functionalities the member's SeaDataNet user id is needed. (Send an email to MARIS providing your SDN user id)**



- ✓ The portal provides users the capability to:
  - search and access a variety of detailed information about their own servers and services status and logs,
  - view on map all SDN services status of operation (availability),
  - record and show the history of their services operation status (statistic reports),
  - calculate a percentage of their services uptime (availability indicator).



# Monitoring Network

[About the portal](#)

[Document Library](#)

[View all services on map](#)

Services

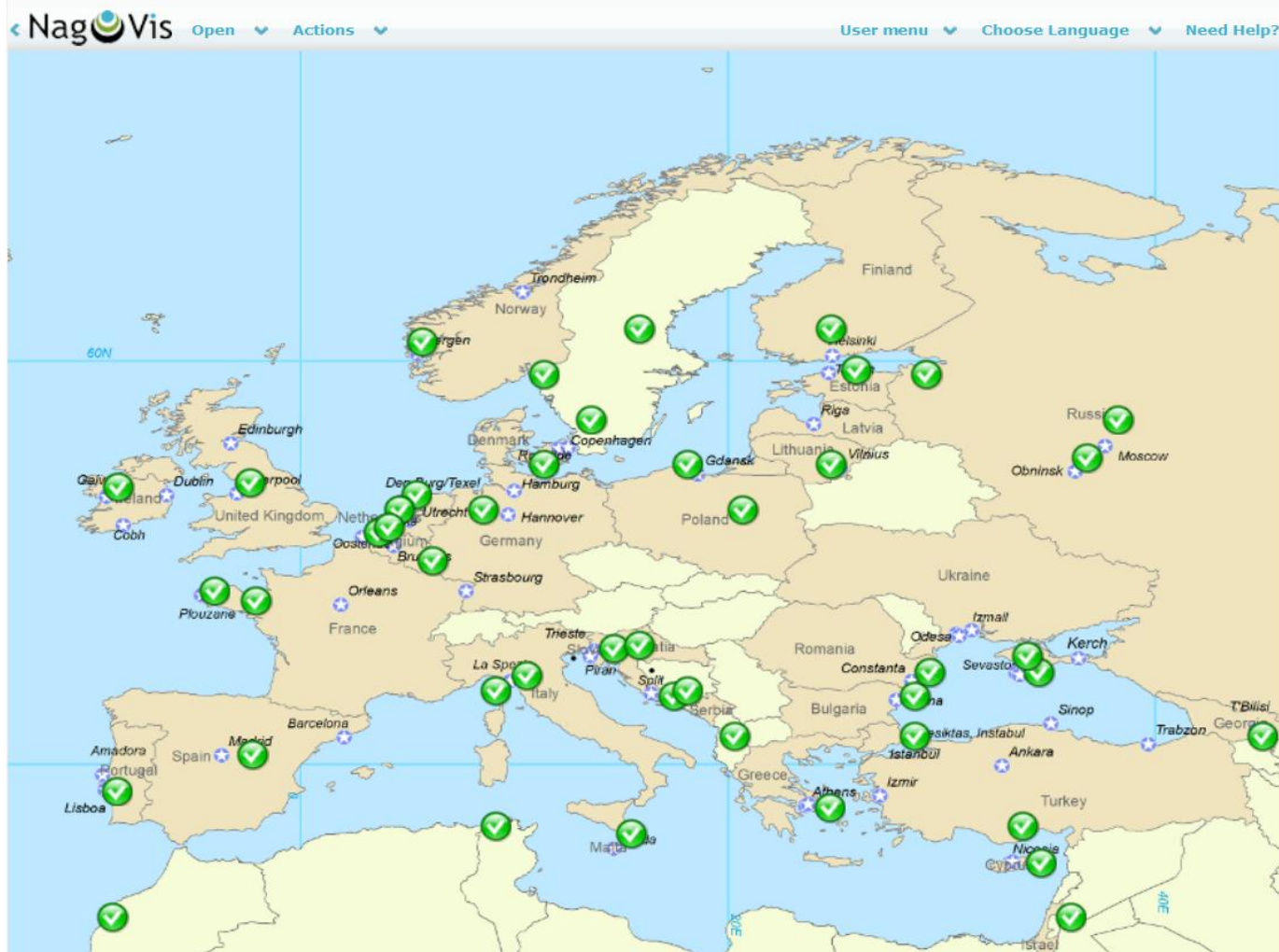
Service Groups

Service(s) Availability Index  
State Breakdowns  
(Availability)  
State History (Trends)

Latest Critical Events  
Alerts Summary  
Alerts Histograms

### Add your Service

- Ask for a new password
- Change your personal info
- Sign-out user *sb30fad!*



# State Reports -> Service Availability Index

### Monitoring Network

- About the portal
- Document Library
- View all services on map

### Current State

- Services
- Service Groups

### State Reports

- Service(s) Availability Index**
- State Breakdowns (Availability)
- State History (Trends)

### Alerts Reports

- Latest Critical Events
- Alerts Summary
- Alerts Histograms

### Add other service(s)

- Add your Service

### Account

- Change your personal info
- Sign-out user *sb30fad!*

### Calculate Availability Index

This form calculates in real-time the availability of a service in a specific period of time on percentage basis.

Select:

From:

To:

Select service & time period and press "Calculate"

Service Availability Index: %UP state of a single service.

# Alert Reports -> Latest Critical Events

Monitoring Network

- About the portal
- Document Library
- View all services on map

Current State

- Services
- Service Groups

State Reports

- Service(s) Availability Index
- State Breakdowns (Availability)
- State History (Trends)

Alerts Reports

- Latest Critical Events**
- Alerts Summary
- Alerts Histograms

Add other service(s)

- Add your Service

Account

- Change your personal info
- Sign-out user *sb30fad!*

Latest Critical Events

Select to view the latest critical events of your host/service.

Select Type:

Select service from the list below:

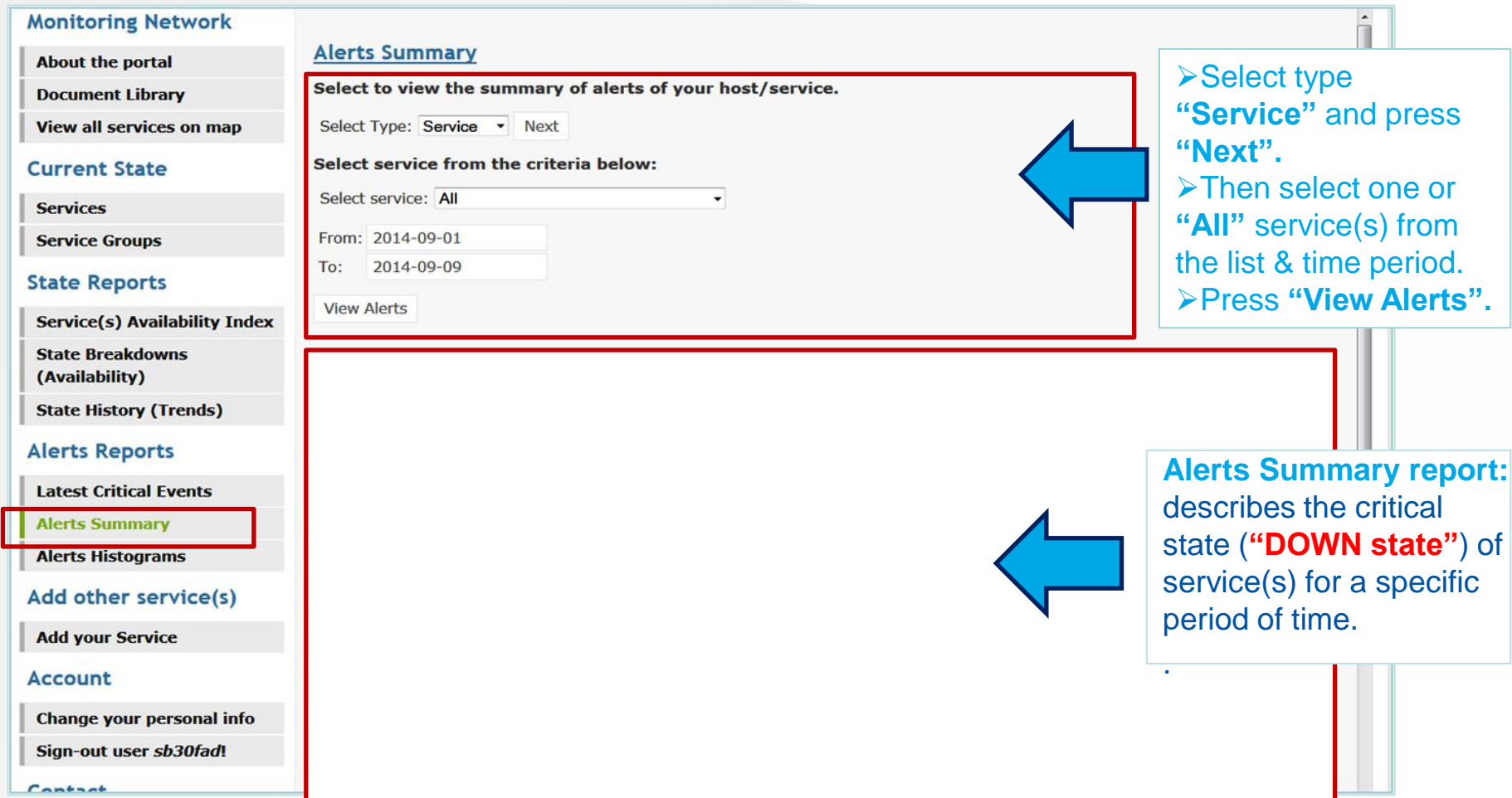
Select service:

➤ Select type “**Service**” & one or “**All**” service(s) from the list.

➤ Press “**View Alerts**”.

Latest critical events report: describes the critical state (“**DOWN state**”) of service(s) for the last 7 days.

# Alert Reports -> Alerts Summary



The screenshot shows the SeaDataNet web interface. On the left is a navigation menu with sections: Monitoring Network, Current State, State Reports, Alerts Reports, Add other service(s), and Account. The 'Alerts Reports' section is expanded, and 'Alerts Summary' is highlighted with a red box. The main content area is titled 'Alerts Summary' and contains a form for selecting alert criteria. A red box highlights the form fields, and a blue arrow points from a text box to it. Another red box highlights the empty area below the form, and a blue arrow points from a text box to it.

**Monitoring Network**

- About the portal
- Document Library
- View all services on map

**Current State**

- Services
- Service Groups

**State Reports**

- Service(s) Availability Index
- State Breakdowns (Availability)
- State History (Trends)

**Alerts Reports**

- Latest Critical Events
- Alerts Summary**
- Alerts Histograms

**Add other service(s)**

- Add your Service

**Account**

- Change your personal info
- Sign-out user *sb30fad!*

**Alerts Summary**

Select to view the summary of alerts of your host/service.

Select Type:  Next

Select service from the criteria below:

Select service:

From:

To:

➤ Select type “**Service**” and press “**Next**”.

➤ Then select one or “**All**” service(s) from the list & time period.

➤ Press “**View Alerts**”.

**Alerts Summary report:** describes the critical state (“**DOWN state**”) of service(s) for a specific period of time.

# Send your request/comments

About the portal

Document Library

View all services on map

Current State

Services

Service Groups

State Reports

Service(s) Availability Index

State Breakdowns (Availability)

State History (Trends)

Alerts Reports

Latest Critical Events

Alerts Summary

Alerts Histograms

Add other service(s)

Add your Service

Account

Change your personal info

Sign-out user *sb30fad!*

Contact

Send your request/comments

Send Request Form

Please describe in the fields below your request to change the IP or address of your service/host or your comments or e.t.c.

\* Full Name:

Stavroula Balopoulou

\* Email:

smpalop@hcmr.gr

\* Organization:

HCMR-HNODC

\* Choose the type of your request:

Schedule Downtime Event

\* Describe your request as free text

On the 28th of May from 9:00 to 13:00 GMT time the HNODC Download Manager will be down because of database maintenance.

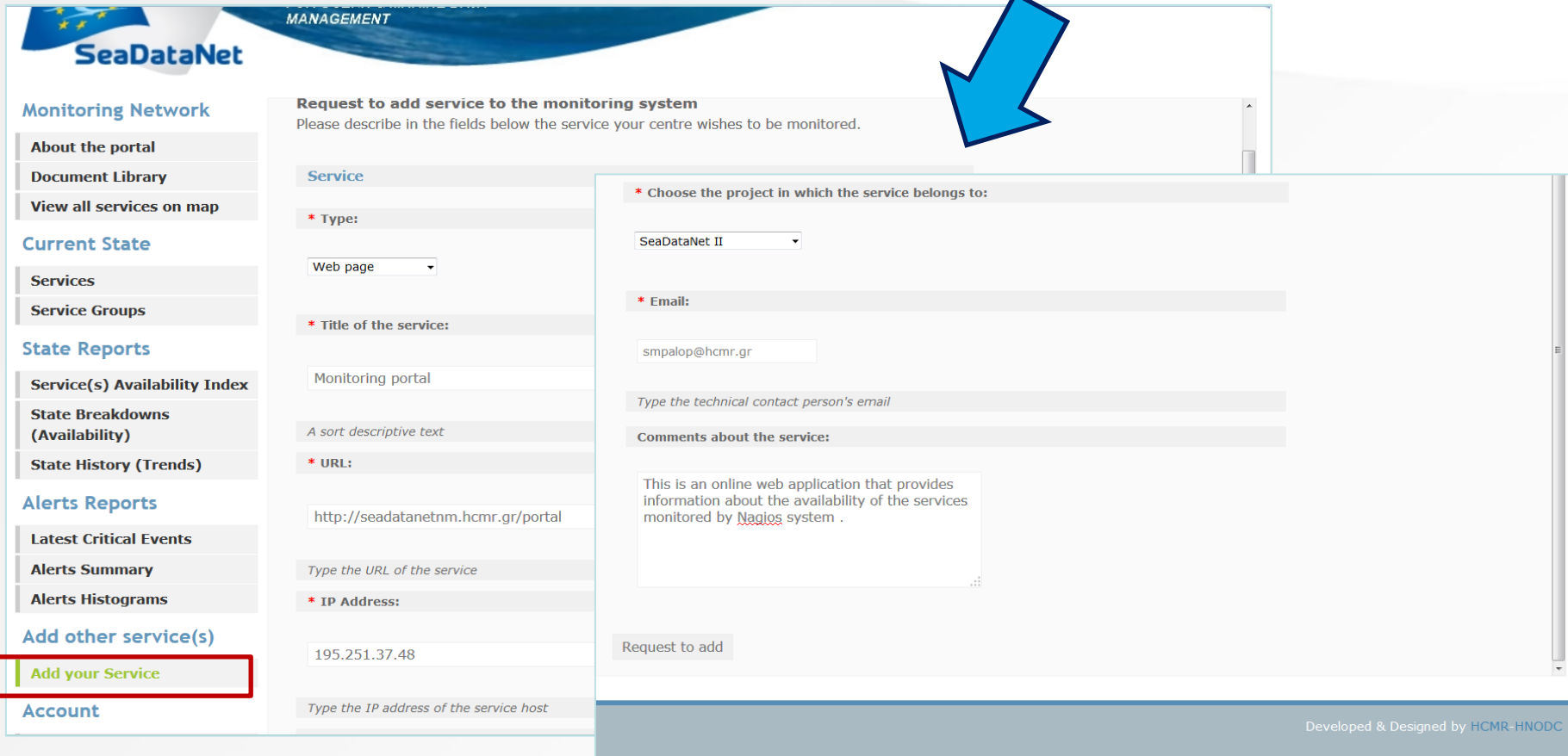
Send your request

Portal users can send their requests for:

- ✓ changing the IP or address of service
- ✓ scheduling downtime events
- ✓ making comments
- ✓ other

Make request through portal for a new service to be monitored by Nagios. The portal team will examine the case and will notify the user by email if and when the service will be added to the system, and therefore can be viewed by the portal interface.

# Add your service



**SeaDataNet**

**Monitoring Network**

- About the portal
- Document Library
- View all services on map

**Current State**

- Services
- Service Groups

**State Reports**

- Service(s) Availability Index
- State Breakdowns (Availability)
- State History (Trends)

**Alerts Reports**

- Latest Critical Events
- Alerts Summary
- Alerts Histograms

**Add other service(s)**

- Add your Service**

**Account**

**Request to add service to the monitoring system**  
Please describe in the fields below the service your centre wishes to be monitored.

**Service**

\* Type:  
Web page

\* Title of the service:  
Monitoring portal

A sort descriptive text

\* URL:  
http://seadatanetnm.hcmr.gr/portal

Type the URL of the service

\* IP Address:  
195.251.37.48

Type the IP address of the service host

\* Choose the project in which the service belongs to:  
SeaDataNet II

\* Email:  
smpalop@hcmr.gr

Type the technical contact person's email

Comments about the service:  
This is an online web application that provides information about the availability of the services monitored by Nagios system .

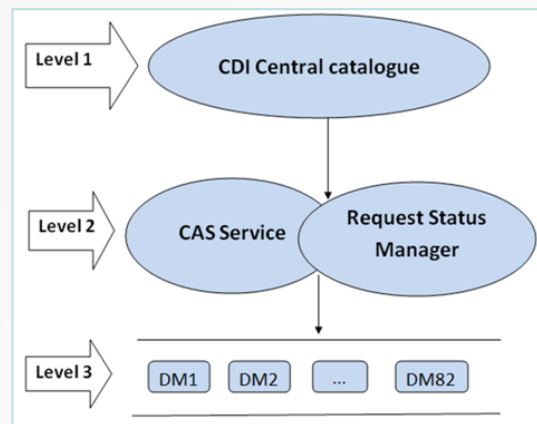
Request to add

Developed & Designed by HCMR-HNODC

## Global Availability Indicator: Definition

- ✓ In the previous TTG meeting in March 2013, the method for defining the global availability indicator has been presented and can be described as follows:
  - Division of the whole system in operational modules (single services whose availability is measured by the monitoring portal).
  - Definition of dependencies between these modules to formulate the influence of each module's availability against the whole system.
  - Definition of a weight coefficient for each module indicating its involvement in the total system productivity.

Data Access Services – Hierarchical chain



## *Global Availability Indicator: Mathematical formula*

- ✓ In the SDN case, the seadatanet.org, CAS authentication and Request Status Manager services play a critical role to the overall data availability of the network, due to the fact that if they are not functioning (**OFF**) then the availability is **NULL**. Whereas, for the cases when seadatanet.org, CAS authentication and Request Status Manager are actually functioning properly (**ON**) an evaluation coefficient ( $w_i$ ) for each local service has been defined based on the estimated requests, along with a binary value ( $s_i$ ) which represents whether the local service's is functioning properly.

$$Availability = \begin{cases} 0, & \text{seadatanet.org / CAS authentication / Request Status Manager OFF} \\ \sum_{i=1}^N w_i s_i, & \text{seadatanet.org / CAS authentication / Request Status Manager ON} \end{cases}$$

# ***B1. Monitoring report of 2<sup>nd</sup> 18 Months***

## ***What is being monitored until now?***

A total of 167 services are currently being monitored (149 in March 2013):

- ✓ 11 SeaDataNet Services,
- ✓ 2 GeoSeas Services,
- ✓ 47 SeaDataNet Download Managers,
- ✓ 26 GeoSeas Download Managers,
- ✓ 24 UBSS Download Managers,
- ✓ 43 EMODnet Chemistry Download,
- ✓ 14 EMODnet Bathymetry Download Managers.

## ***Monitored Services statistics***

In the next slides, statistics are presented about the availability results of the 167 services derived from 7 service groups. The results are presented per service group and refer to a monitoring period of approximately 18 months (from 01-04-2013 to 17-09-2014).

The 7 service groups are:

- ✓ SeaDataNet Services
- ✓ GeoSeas Services
- ✓ SeaDataNet Download Managers (SeaDataNet DMs)
- ✓ GeoSeas Download Managers (GeoSeas DMs)
- ✓ UBSS Download Managers (UBSS DMs)
- ✓ EMODnet Chemistry Download Managers (EMODnet-Chem DMs)
- ✓ EMODnet Bathymetry Download Managers (EMODnet-Bathym DMs)

## 'SeaDataNet Services' results from 01-04-2013 to 17-09-2014

	Service	Starting Date	% Time OK	% Time Critical
	Common Vocabularies	27/11/2013 12:36	99.742% (99.742%)	0.258% (0.258%)
	CAS Service	29/11/2013 13:42	99.172% (99.172%)	0.828% (0.828%)
	CSR homepage	29/6/2012 21:00	98.999% (98.999%)	1.001% (1.001%)
	CDI homepage 1	29/6/2012 21:00	99.391% (99.391%)	0.609% (0.609%)
	CDI homepage 2	29/6/2012 21:00	99.388% (99.388%)	0.612% (0.612%)
	EDIOS homepage	29/6/2012 21:00	99.927% (99.927%)	0.073% (0.073%)
	EDMERP homepage	29/6/2012 21:00	99.924% (99.924%)	0.076% (0.076%)
	EDMO homepage	29/6/2012 21:00	99.914% (99.914%)	0.086% (0.086%)
	EDMED homepage	29/6/2012 21:00	99.930% (99.930%)	0.070% (0.070%)
	SeaDataNet homepage	15/6/2012 21:00	99.781% (99.781%)	0.219% (0.219%)
<b>Average</b>			<b>99.617% (99.617%)</b>	<b>0.383% (0.383%)</b>

## ***‘GeoSeas Services’ results from 01-04-2013 to 17-09-2014***

	Service	Starting Date	% Time OK	% Time Critical
	Geoseas Godiva Service	7/3/2013 13:45	99.528% (99.528%)	0.472% (0.472%)
	Geoseas Thredds Service	7/3/2013 13:46	99.533% (99.533%)	0.467% (0.467%)
<b>Average</b>			<b>99.530% (99.530%)</b>	<b>0.470% (0.470%)</b>



	Service	Starting Date	% Time OK	% Time Critical
	BGODC-IOBAS Download Manager	29/6/2012 21:00	99,701%	0,299%
	BODC Download Manager	29/6/2012 12:53	99,831%	0,169%
	BSH Download Manager	30/6/2012 21:00	97,964%	2,036%
	CNR Download Manager	15/7/2013 21:00	98,873%	1,127%
	CYOC Download Manager	29/6/2012 12:54	98,781%	1,219%
	ENEA Download Manager	29/6/2012 21:00	97,892%	2,108%
	EPA Download Manager	7/9/2012 13:19	99,469%	0,531%
	FMI Download Manager	7/9/2012 12:45	99,673%	0,327%
	HNODC Download Manager	27/6/2012 12:13	99,995%	0,005%
	IBSS Download Manager	29/6/2012 21:00	99,812%	0,188%
	ICES Download Manager	30/4/2013 21:00	99,480%	0,520%
	IEO Download Manager	15/11/2012 22:00	99,566%	0,434%
	IFREMERE Download Manager	29/6/2012 21:00	99,608%	0,392%
	IGEWE Download Manager	15/7/2013 21:00	75,609%	24,391%
	IHPT Download Manager	29/6/2012 12:52	98,644%	1,356%
	IMBK Download Manager	19/10/2012 21:00	99,845%	0,155%
	IMES-METU Download Manager	31/1/2014 10:18	99,181%	0,819%
	IMGW Download Manager	29/1/2013 9:32	99,904%	0,096%
	IMR Download Manager	29/6/2012 21:00	99,769%	0,231%
	INRH Download Manager	29/10/2013 9:42	98,180%	1,820%
	INSTM Download Manager	18/4/2013 21:00	93,080%	6,920%
	IOI Download Manager	29/6/2012 21:00	99,560%	0,440%
	IOLR Download Manager	19/10/2012 21:00	99,726%	0,274%
	IORAS-SIO Download Manager	15/7/2013 14:33	99,434%	0,566%
	IZOR Download Manager	29/6/2012 12:57	99,773%	0,227%
	LIAE Download Manager	3/4/2014 18:11	99,965%	0,035%
	MHI-MIST Download Manager	15/7/2013 21:00	96,953%	3,047%
	MI Download Manager	29/6/2012 21:00	99,837%	0,163%
	MRI Download Manager	29/6/2012 12:57	99,846%	0,154%
	MSI Download Manager	29/6/2012 12:53	99,977%	0,023%
	MSI-NIB Download Manager	7/9/2012 12:55	99,835%	0,165%
	MUMM Download Manager	29/6/2012 12:54	98,558%	1,442%
	NERI Download Manager	29/6/2012 21:00	99,616%	0,384%
	NIMRD Download Manager	29/6/2012 21:00	96,504%	3,496%
	NIOO Download Manager	29/6/2012 21:00	97,972%	2,028%
	NIOZ Download Manager	30/6/2012 21:00	99,692%	0,308%
	OGS Download Manager	29/6/2012 21:00	99,380%	0,620%
	PANGEA Download Manager	27/5/2013 21:00	99,848%	0,152%
	RIHMI Download Manager	30/6/2012 21:00	99,936%	0,064%
	RSHU Download Manager	18/4/2013 21:00	79,622%	20,378%
	RWS Download Manager	31/1/2014 22:00	100,000%	0,000%
	SHODB Download Manager	27/5/2013 21:00	91,471%	8,529%
	SHOM Download Manager	19/10/2012 21:00	98,332%	1,668%
	SMHI Download Manager	29/1/2013 22:00	99,838%	0,162%
	TSU Download Manager	29/6/2012 21:00	99,638%	0,362%
	VLIZ Download Manager	29/6/2012 21:00	99,831%	0,169%
<b>Average</b>			<b>98,081%</b>	<b>1,919%</b>

**'SeaDataNet DMs' results from 01-04-2013 to 17-09-2014**

**'Geo-Seas DMs' results from 01-04-2013 to 17-09-2014**

	Service	Starting Date	% Time OK	% Time Critical
	BGODC-IOBAS Download Manager	29/6/2012 21:00	99,701%	0,299%
	BGR Download Manager	29/6/2012 21:00	99,844%	0,156%
	BGS Download Manager	29/6/2012 21:00	99,518%	0,482%
	BODC Download Manager	29/6/2012 21:00	99,831%	0,169%
	BRGM Download Manager	15/7/2013 17:47	99,839%	0,161%
	BSH Download Manager	30/6/2012 21:00	97,964%	2036,000%
	CDG-CNRS Download Manager	29/6/2012 21:00	98,675%	1,325%
	EGK Download Manager	29/6/2012 21:00	99,908%	0,092%
	GEUS Download Manager	29/6/2012 20:07	99,671%	0,329%
	OSU Download Manager	29/6/2012 21:00	99,828%	0,172%
	IFREMER Download Manager	29/6/2012 21:00	99,608%	0,392%
	IGG-NRC Download Manager	29/6/2012 21:00	99,636%	0,364%
	IGME-ES Download Manager	29/6/2012 21:00	97,976%	2,024%
	IGME-GR Download Manager	15/11/2012 22:00	98,426%	1,574%
	LNEG Download Manager	29/6/2012 21:00	99,624%	0,376%
	LU Download Manager	29/6/2012 21:00	61,848%	38,152%
	MUMM Download Manager	29/6/2012 12:52	98,558%	1,442%
	NGU Download Manager	29/6/2012 12:52	99,068%	0,932%
	NOA Download Manager	29/6/2012 21:00	99,937%	0,063%
	OGS-RIMA Download Manager	29/6/2012 12:52	99,527%	0,473%
	PGI Download Manager	29/6/2012 21:00	99,558%	0,442%
	SHOM Download Manager	19/10/2012 21:00	98,332%	1,668%
	TNO Download Manager	29/6/2012 21:00	100,000%	0,000%
	UB Download Manager	7/9/2012 15:24	98,730%	1,270%
	UCC Download Manager	29/6/2012 12:53	99,462%	0,538%
<b>Average</b>			<b>97,803%</b>	<b>2,197%</b>

	Service	Starting Date	% Time OK	% Time Critical
	Ankara University Download Manager	27/6/2012 12:11	96,813% (96,813%)	3,187% (3,187%)
	BGODC-IOBAS Download Manager	29/6/2012 21:00	99,701% (99,701%)	0,299% (0,299%)
	BSCS Download Manager	29/6/2012 21:00	98,293% (98,293%)	1,707% (1,707%)
	BSTU Download Manager	29/6/2012 21:00	93,317% (93,317%)	6,683% (6,683%)
	DEU-IMST Download Manager	29/6/2012 21:00	84,886% (84,886%)	15,114% (15,114%)
	DHMO Download Manager	15/7/2013 14:03	95,186% (95,186%)	4,814% (4,814%)
	GAMMA Download Manager	29/6/2012 21:00	99,907% (99,907%)	0,093% (0,093%)
	IBSS Download Manager	29/6/2012 21:00	99,812% (99,812%)	0,188% (0,188%)
	IFR Download Manager	29/6/2012 13:18	93,814% (93,814%)	6,186% (6,186%)
	IGS Download Manager	19/10/2012 21:00	85,730% (85,730%)	14,270% (14,270%)
<b>'UBSS DMS' results from 01-04-2013 to 17-09-2014</b>				
	IKIRAS Download Manager	15/7/2013 22:00	99,660% (99,660%)	1,340% (1,340%)
	IMES-METU Download Manager	31/1/2014 10:18	99,181% (99,181%)	0,819% (0,819%)
	IORAS-SIO Download Manager	15/7/2013 14:33	99,434% (99,434%)	0,566% (0,566%)
	IU-IMS Download Manager	29/6/2012 21:00	99,888% (99,888%)	0,112% (0,112%)
	MHI-MIST Download Manager	15/7/2013 21:00	96,953% (96,953%)	3,047% (3,047%)
	MHI-UB Download Manager	15/7/2013 21:00	98,928% (98,928%)	1,072% (1,072%)
	NIMH Download Manager	12/5/2014 21:00	98,362% (98,362%)	1,638% (1,638%)
	NIMRD Download Manager	29/6/2012 21:00	96,505% (96,505%)	3,495% (3,495%)
	ONU Download Manager	29/6/2012 21:00	99,232% (99,232%)	0,768% (0,768%)
	RIHMI Download Manager	30/6/2012 21:00	99,936% (99,936%)	0,064% (0,064%)
	SNU Download Manager	5/7/2012 21:00	98,998% (98,998%)	1,002% (1,002%)
	TSU Download Manager	29/6/2012 21:00	99,638% (99,638%)	0,362% (0,362%)
	UKRSCES Download Manager	29/6/2012 12:59	96,188% (96,188%)	3,812% (3,812%)
	UMG Download Manager	29/1/2013 9:37	97,063% (97,063%)	2,937% (2,937%)
	YugNIRO Download Manager	7/9/2012 21:00	77,514% (77,514%)	22,486% (22,486%)
<b>Average</b>			<b>96,158%</b>	<b>3,842%</b>



	Service	Starting Date	% Time OK	% Time Critical
	BGODC-IOBAS Download Manager	29/6/2012 21:00	99,701%	0,299%
	BODC Download Manager	29/6/2012 12:53	99,831%	0,169%
	BSH Download Manager	30/6/2012 21:00	97,964%	2,036%
	CDG-CNRS Download Manager	29/6/2012 21:00	98,675%	1,325%
	CYOC Download Manager	29/6/2012 12:54	98,781%	1,219%
	ENEA Download Manager	29/6/2012 21:00	97,892%	2,108%
	EPA Download Manager	7/9/2012 13:19	99,469%	0,531%
	FMI Download Manager	7/9/2012 12:45	99,673%	0,327%
	HNODC Download Manager	27/6/2012 12:13	99,995%	0,005%
	IBSS Download Manager	29/6/2012 21:00	99,812%	0,188%
	ICES Download Manager	30/4/2013 21:00	99,480%	0,520%
	IEO Download Manager	15/11/2012 22:00	99,566%	0,434%
	IFREMER Download Manager	29/6/2012 21:00	99,608%	39,200%
	IHPT Download Manager	29/6/2012 12:52	98,644%	1,356%
	IMBK Download Manager	19/10/2012 21:00	99,845%	0,155%
	IMES-METU Download Manager	31/1/2014 10:18	99,181%	0,819%
	IMGW Download Manager	29/1/2013 9:32	99,904%	0,096%
	IMR Download Manager	29/6/2012 21:00	99,769%	0,231%
	IOLR Download Manager	19/10/2012 21:00	99,726%	0,274%
	IORAS-SIO Download Manager	15/7/2013 14:33	99,434%	0,566%
	IPMA Download Manager	1/9/2014 20:32	100,000%	0,000%
	ISMAR Ancona Download Manager	5/3/2014 22:00	99,986%	0,014%
	ISPRAS Download Manager	2/5/2014 10:05	99,197%	0,803%
	IO-IMS Download Manager	29/6/2012 21:00	99,886%	0,112%
	IZOR Download Manager	29/6/2012 12:57	99,773%	0,227%
	LIAE Download Manager	3/4/2014 18:11	99,965%	0,035%
	MHI-MIST Download Manager	15/7/2013 21:00	96,953%	3,047%
	MHI-UB Download Manager	15/7/2013 21:00	98,928%	1,072%
	MI Download Manager	29/6/2012 21:00	99,837%	0,163%
	MSI Download Manager	29/6/2012 12:53	99,977%	0,023%
	MSI-NIB Download Manager	7/9/2012 12:55	99,835%	0,165%
	MUMM Download Manager	29/6/2012 12:52	98,558%	1,442%
	NERI Download Manager	29/6/2012 21:00	99,616%	0,384%
	NIMRD Download Manager	29/6/2012 21:00	96,505%	3,495%
	NIOZ Download Manager	30/6/2012 21:00	99,692%	0,308%
	OGS Download Manager	29/6/2012 21:00	99,380%	0,620%
	PANGEA Download Manager	27/5/2013 21:00	99,848%	0,152%
	RIHMI Download Manager	30/6/2012 21:00	99,936%	0,064%
	RWS Download Manager	31/1/2014 22:00	100,000%	0,000%
	SMHI Download Manager	29/1/2013 22:00	99,838%	0,162%
	TSU Download Manager	29/6/2012 21:00	99,638%	0,362%
	UKRSCES Download Manager	29/6/2012 12:59	96,188%	3,812%
	VLIZ Download Manager	29/6/2012 21:00	99,831%	0,169%
	YugNIRO Download Manager	7/9/2012 21:00	77,514%	22,486%
<b>Average</b>			<b>98,826%</b>	<b>2,056%</b>

**'EMODNet-Chemistry DMs' results from 01-04-2013 to 17-09-2014**

***‘EMODNet-Bathymetry DMs’ results from 01-04-2013 to 17-09-2014***

	Service	Starting Date	% Time OK	% Time Critical
	BGODC-IOBAS Download Manager	29/6/2012 21:00	99,701% (99,701%)	0,299% (0,299%)
	BODC Download Manager	29/6/2012 12:53	99,831% (99,831%)	0,169% (0,169%)
	BSH Download Manager	30/6/2012 21:00	97,964% (97,964%)	2,036% (2,036%)
	GSI Download Manager	29/6/2012 21:00	99,828% (99,828%)	0,172% (0,172%)
	INCO-DC Download Manager	27/6/2012 11:13	99,995% (99,995%)	0,005% (0,005%)
	ED Download Manager	15/11/2012 22:00	99,566% (99,566%)	0,434% (0,434%)
	IFREMER Download Manager	29/6/2012 21:00	99,608% (99,608%)	0,392% (0,392%)
	IHPT Download Manager	29/6/2012 12:52	98,644% (98,644%)	1,356% (1,356%)
	LNEG Download Manager	29/6/2012 21:00	99,624% (99,624%)	0,376% (0,376%)
	MRI Download Manager	29/6/2012 12:57	99,846% (99,846%)	0,154% (0,154%)
	MUMM Download Manager	29/6/2012 12:52	98,558% (98,558%)	1,442% (1,442%)
	OGS-RIMA Download Manager	29/6/2012 12:52	99,527% (99,527%)	0,473% (0,473%)
	SHOM Download Manager	19/10/2012 21:00	98,332% (98,332%)	1,668% (1,668%)
<b>Average</b>			<b>99,310% (99,310%)</b>	<b>0,690% (0,690%)</b>

## ***B2. RSM Statistics***

## ***Operational performance of the infrastructure***

- ✓ MARIS robot verifies that the Download Manager's are capable of handling shopping requests made via the CDI portal.
- ✓ Test results are for the period 01-04-2013 -> 17-09-2014.
- ✓ The SDN2 third year annual metrics report will provide more details.

## ***Robot monitoring of CDI shopping process: Table of results for the period 01-04-2013 -> 17-09-2014***

Partner	EDMO code	Number of successful robot orders	Total number of orders	% successful robot requests per partner	SeaDataNet partner or subcontractor
BGS	42	497	521	95,39%	No
BODC	43	506	521	97,12%	Yes
German -NODC	96	498	521	95,59%	Yes
OGS	120	503	521	96,55%	Yes
CNR(SP)	134	382	426	89,67%	Yes
ENEA	136	487	521	93,47%	Yes
IFR	191	457	521	87,72%	No, partner in UBSS
IMWM MB	193	516	521	99,04%	Yes
IO PAS	195	513	517	99,23%	Yes
HCMR/HNODC	269	514	521	98,66%	Yes
IGME-Spain	310	498	521	95,59%	No, partner in Geo-Seas
IEO	353	501	521	96,16%	Yes
GSI	366	516	521	99,04%	No, partner in Geo-Seas
MI	396	510	521	97,89%	Yes
FMI	422	512	521	98,27%	Yes
IFREMER / IDM/SISMER	486	505	521	96,93%	Yes
SHOM	540	445	521	85,41%	Yes
SMHI	545	516	521	99,04%	Yes
CDG / CNRS	565	474	521	90,98%	No, partner in Geo-Seas
MRI	583	515	521	98,85%	Yes
IHPT	590	496	521	95,20%	Yes

## Table of results – Cont.1

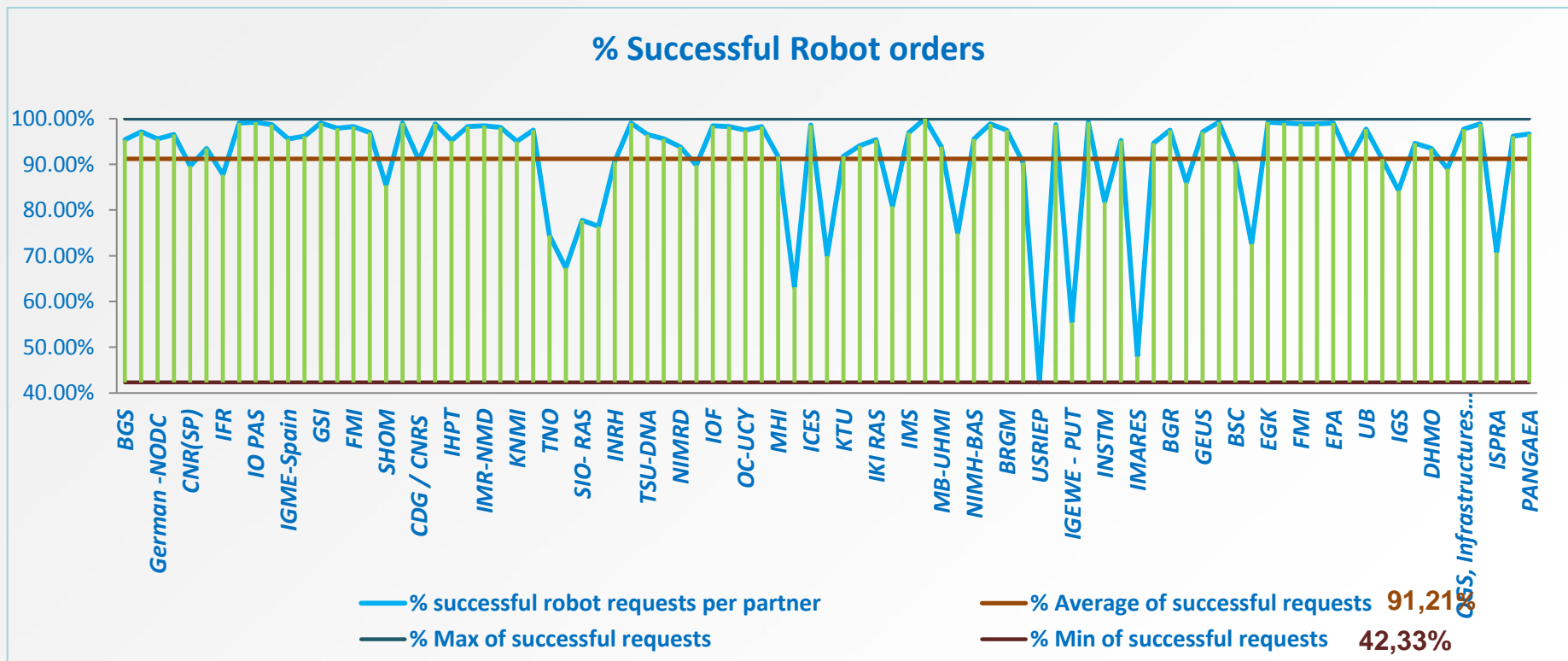
Partner	EDMO code	Number of successful robot orders	Total number of orders	% successful robot requests per partner	SeaDataNet partner or subcontractor
PGI BMG	609	512	521	98,27%	No, partner in Geo-Seas
IMR-NMD	612	513	521	98,46%	Yes
NIOZ	630	511	521	98,08%	Yes, indirect partner
KNMI	632	495	521	95,01%	Yes, indirect partner
NIOO-CEME	633	508	521	97,50%	Yes, indirect partner
TNO	635	388	521	74,47%	Yes, indirect partner
RIHMI-WDC/NODC	681	351	521	67,37%	Yes
SIO- RAS	685	405	521	77,74%	Yes
YugNIRO	688	399	522	76,44%	No, partner in UBSS
INRH	691	270	298	90,60%	Yes, subcontractor of IEO
BGODC	692	516	521	99,04%	Yes
TSU-DNA	693	503	521	96,55%	Yes
IMS	696	498	521	95,59%	Yes
NIMRD	697	489	521	93,86%	Yes
LIAE	698	468	521	89,83%	Yes
IOF	700	513	521	98,46%	Yes
UMT.IOI.POU	708	512	521	98,27%	Yes
OC-UCY	711	508	521	97,50%	Yes
MSI-TTU	713	512	521	98,27%	Yes
MHI	727	478	521	91,75%	Yes
BIOS MAR	729	329	521	63,15%	Yes
ICES	730	491	498	98,59%	Yes
SHODB	731	335	479	69,94%	Yes
KTU	732	478	521	91,75%	No, partner in UBSS
Sinop-SNU FF	733	490	521	94,05%	No, partner in UBSS
IKI RAS	761	497	521	95,39%	No, partner in UBSS
IMST	801	421	521	80,81%	No, partner in UBSS
IMS	802	505	521	96,93%	No, partner in UBSS + EMODnet Chemistry
IBSS	840	521	521	100,00%	Yes
MB-UHMI	841	489	521	93,86%	No, partner in UBSS + EMODnet Chemistry
RSHU	924	391	522	74,90%	Yes

## Table of results – Cont.2

Partner	EDMO code	Number of successful robot orders	Total number of orders	% successful robot requests per partner	SeaDataNet partner or subcontractor
NIMH-BAS	961	498	521	95,59%	No, partner in UBSS
IOLR	963	515	521	98,85%	Yes
BRGM	1022	508	521	97,50%	No, partner in Geo-Seas
UkrSCES	1167	470	520	90,38%	No, partner in UBSS + EMODnet Chemistry
USRIEP	1168	221	522	42,34%	No, partner in UBSS
ONU	1169	514	521	98,66%	No, partner in UBSS
IGWE - PUT	1228	233	420	55,48%	Yes, subcontractor of OGS
NIB-Marine Biology Station	1229	517	521	99,23%	Yes
INSTM	1232	426	521	81,77%	Yes, subcontractor of IEO
GAMMA	1265	496	521	95,20%	No, partner in UBSS
IMARES	1340	84	175	48,00%	No, partner in WaLTaR
NGU	1415	493	521	94,63%	No, partner in Geo-Seas
BGR	1496	508	521	97,50%	No, partner in Geo-Seas
RW	1526	449	522	86,02%	Yes, indirect partner
GEUS	1543	506	521	97,12%	No, partner in Geo-Seas
IGG-NRC	1545	517	521	99,23%	No, partner in Geo-Seas
BSC	1546	472	521	90,60%	No, partner in UBSS
MUMM-BMDC	1578	379	522	72,61%	Yes
EGK	1609	517	521	99,23%	No, partner in Geo-Seas
NOA	1703	516	521	99,04%	No, partner in Geo-Seas
FMI	1725	515	521	98,85%	Yes
UCC	1848	515	521	98,85%	No, partner in Geo-Seas
EPA	2108	516	521	99,04%	Yes
LNEG	2124	475	521	91,17%	No, partner in Geo-Seas + EMODNet Bathymetry
UB	2172	509	521	97,70%	No, partner in Geo-Seas
Ankara University	2176	475	521	91,17%	No, partner in UBSS
IGS	2228	440	522	84,29%	No, partner in UBSS
MGU	2230	493	521	94,63%	No, partner in UBSS
DHMO	2231	487	521	93,47%	No, partner in UBSS
LU	2239	464	521	89,06%	No, partner in Geo-Seas
OGS, Infrastructures Division	2276	509	521	97,70%	Yes
IMBK	2432	515	521	98,85%	Yes, subcontractor of OGS
ISPRA	3009	87	123	70,73%	No, partner in EMODNet Chemistry
NCSD	3092	502	522	96,17%	No, partner in Geo-Seas
PANGAEA	3234	463	479	96,66%	Yes

## Robot monitoring of CDI shopping process: Statistics for the period 01-04-2013 -> 17-09-2014

- ✓ MARIS Robot successful tests per partner Download Manager are summarized below:



## ***Robot monitoring of CDI shopping process: Comparison with “Second Year Annual metrics”***

✓ Table of indicators for the 2<sup>nd</sup> 18 months:

Period 01-04-2013 until 17-09-2014	
Average of the percentage of successful requests	91,21%
Maximum of the percentage of successful requests	100%
Number of organization with 100% result	1
Minimum of the percentage of successful requests	42,33%

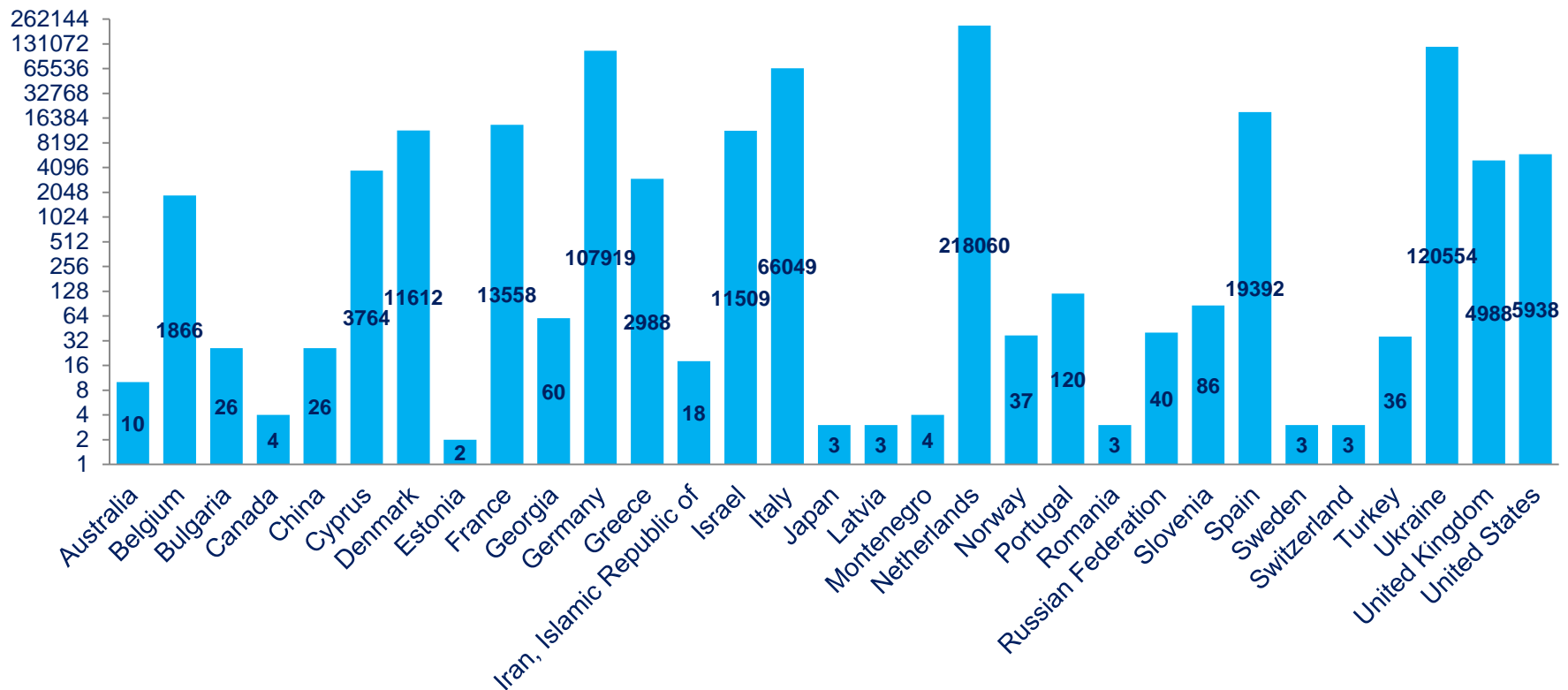
✓ Indicators, compared to last annual metrics report:

- Average of successful requests: 91,21% < 95,75%.
- Maximum of successful requests: 100% = 100%
- Number of organisation with 100% result: 1 < 2
- Minimum of succesful requests: 42,33% < 60,87%
- Standard deviation of successful requests: 11,64 > 6.19

## Data requests (01-04-2014 until 17-09-2014)

- ✓ Results for 5 months: Requests for data files made to countries that have submitted data to the CDI portal.

Requests by country

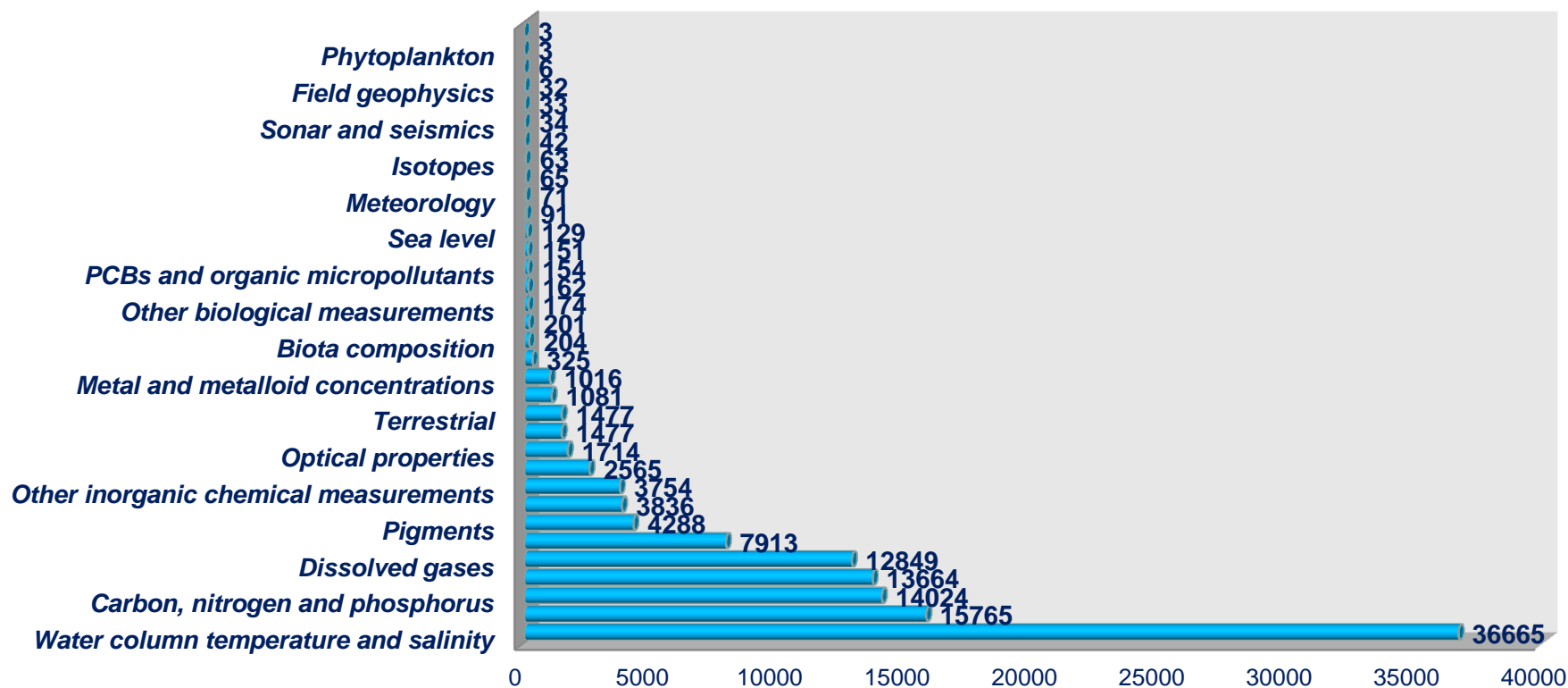


## CDI submission (01-04-2014 until 17-09-2014)

- ✓ Results for 5 months: Graphical distribution of datasets by partner, access restriction and measurement type category.

### CDI distribution by measur. type category

■ Total Datasets



## ***Future Plans***

- ✓ Continue to maintain the monitoring system:
  - upgrade Nagios to the latest version,
  - add new services,
  - update the services to the latest changes (IP servers, addresses, contact persons, e.t.c ).
- ✓ HCMR is currently developing software for the calculation of the Total Availability Indicator formula that will be included in the monitoring portal.
- ✓ HCMR and OGS will implement shortly a method for checking recorded events from both Nagios systems (HCMR+OGS synchronized but not in ) so as to define if critical events are false or not.

***Thank you.***  
***Questions, Comments or Remarks?***