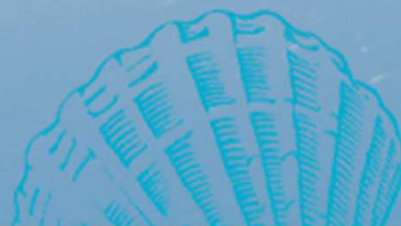




INSTITUTE OF MARINE RESEARCH
HAVFORSKNINGSINSTITUTTET

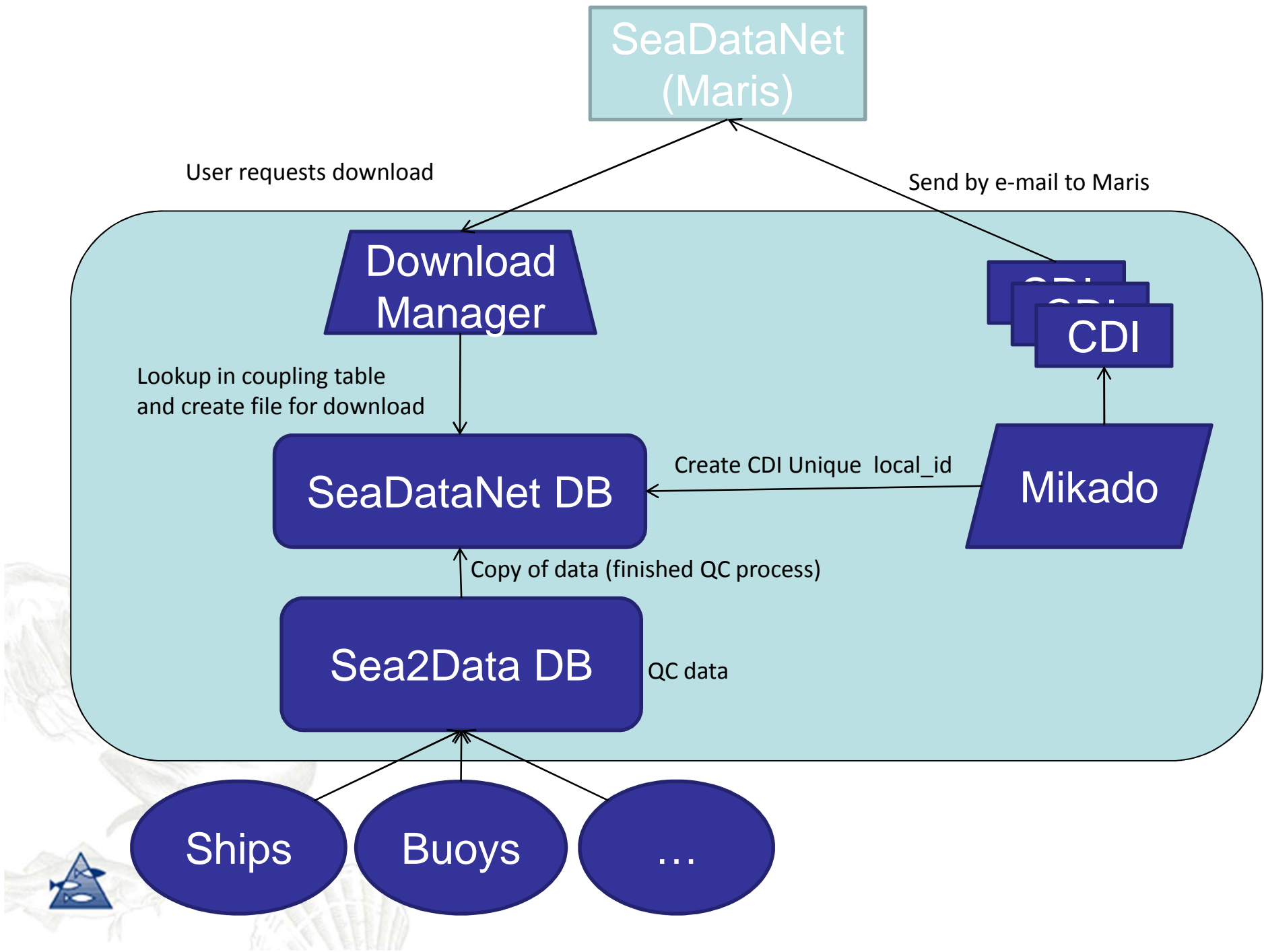




CDI and QC at IMR

Ann Kristin Østrem

Sjur Ringheim Lid



Sea2Data Database

Internal database for data handling

- Contains quality controlled data

Has information about cruises and the actual data collected on cruises

- Currently hydrographic, biological (fish), chemical, fisheries acoustic and cruise tracks
- Other data types planned for the future (e.g. plankton, underway data, fisheries statistics)



Sea2Data DB

Handling updates

Copies in the SeaDataNet DB is checked against the Sea2Data DB (last_edited field)

– If the data has been updated we regenerate the data and generate a new CDI

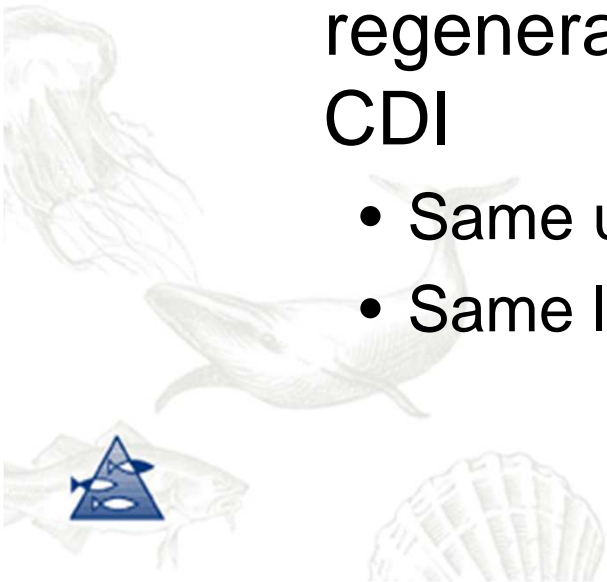
- Same unique key
- Same local_cdi_id



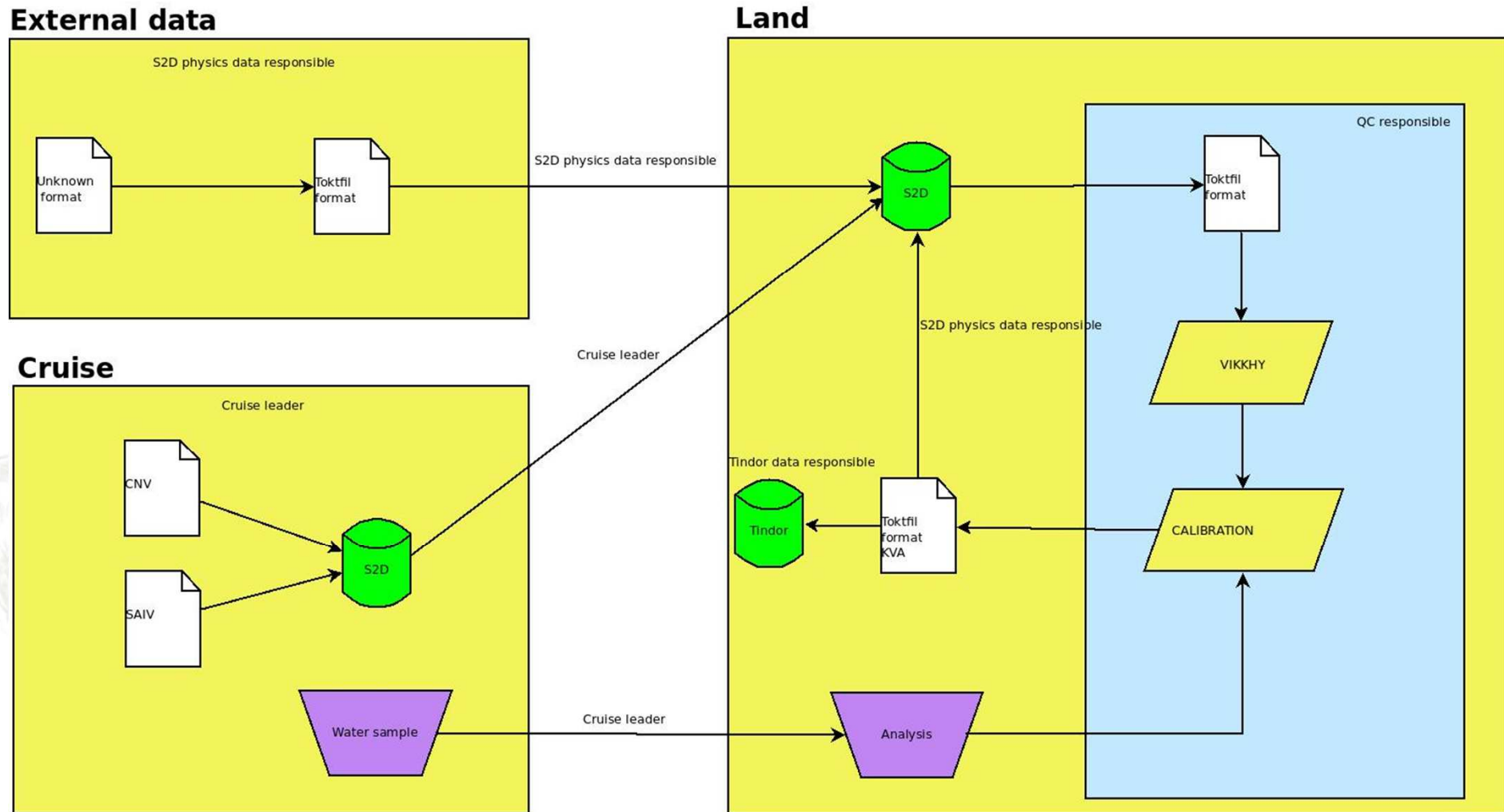
```
graph BT; A[Sea2Data DB] --> B[SeaDataNet DB]
```

SeaDataNet DB

Sea2Data DB



Data handling procedure (TS)



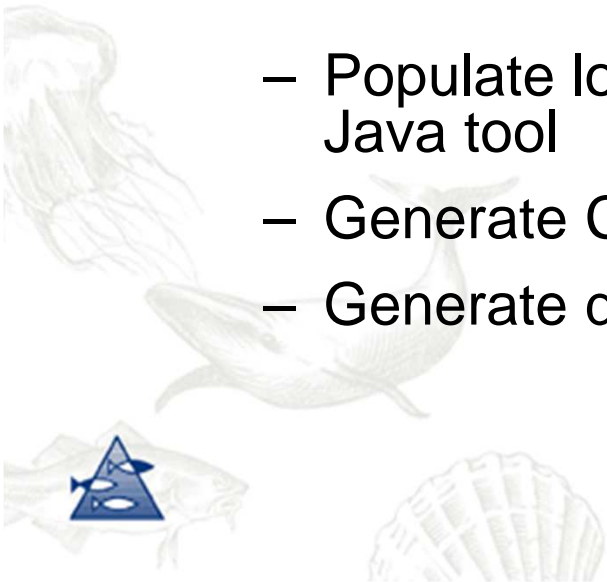
Tools used in the process

Quality control

- VIKHHY – IMR developed tool for QC (SAS Institute)
- Laboratory corrections – IMR developed tool (Pascal)

Creation of CDI's

- Populate local SeaDataNet database - IMR developed Java tool
- Generate CDI's – Mikado
- Generate data files when ordered - Download Manager



Many thanks to BODC who shared their database schema and Mikado xml document for creating CDI's

We now have a PostgreSQL version of the Oracle schema that BODC uses so if anyone is interested please let us know (nmd@imr.no)

