

MSP in the Med: A Vision from Southern Europe

the data factor ... importance of data integration instruments for maritime spatial plans

Vittorio Barale

European Commission, Joint Research Centre
Directorate D "Sustainable Resources"
Ispra (Italy)

"... spatial planning of the sea was [initially] perceived in the EU as an environmental policy. However, it is now regarded as a sector-neutral approach with the objective not only to protect the marine environment, but also to promote economic growth of the maritime economy ..."

*Maria Damanaki
[former] European Commissioner for Maritime Affairs and Fisheries
in: Marine Ecosystems and Management (MEAM), Vol. 4, No. 4, February-March 2011*

**USING M.S.P. ACCORDING TO
AREA AND TYPE OF ACTIVITY**

**II
DEFINING OBJECTIVES
TO GUIDE M.S.P.**

**III
DEVELOPING M.S.P. IN
A TRANSPARENT MANNER**

**IV
STAKEHOLDER
PARTICIPATION**

**V
COORDINATION OF MEMBER STATES,
SIMPLER DECISION PROCESSES**

**VI
ENSURING THE LEGAL EFFECT
OF NATIONAL M.S.P.**

**VII
CROSS-BORDER COOPERATION
AND CONSULTATION**

**VIII
INCORPORATING MONITORING
& EVALUATION IN THE PLANNING**

**IX
COHERENCE OF TERRESTRIAL
AND MARITIME PLANNING**

**X
STRONG SCIENTIFIC DATA
AND KNOWLEDGE BASE**



data banking
N.O.D.C.s
or equivalent...

RTD

COPERNICUS
marine
services

GROW

EuroStat

EMSA
CleanSeaNet
SafeSeaNet
VTMIS

EurOcean
iMarine

VMS

DCF

EUMOF
A

FIDES
MIS

Regional
Marine
Conventions

CISE

ENV
EEA



MARE

MCC
MSFD
Competence
Centre

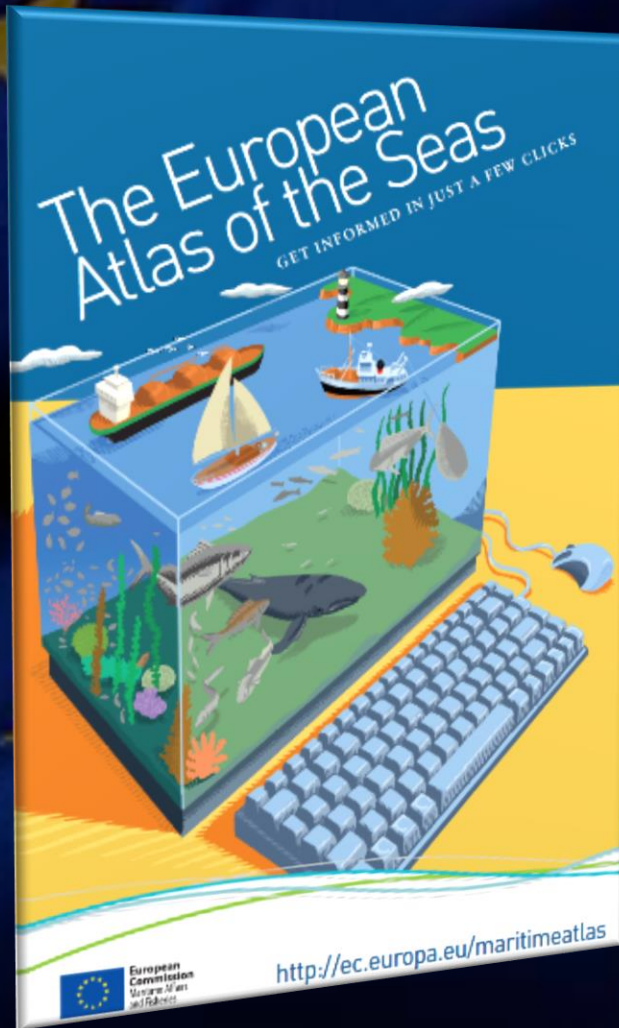


data collection
monitoring
business
science
...

JRC

EMIS
GIIIS

IPChem



✓ aims of the Atlas

- dynamical database: data collection, map validation, regular updates
- offering access to complex information in pictorial form
- conflicts (problems) and synergies (opportunities)

✓ technical features

- multi-theme, map overlay
- time series, space/time sliders, bar charts
- data layers descriptions, metadata access & data sources

✓ user mode

- pre-cooked thematic maps (based data from EC and its Agencies)
- do-it-yourself maps (indicators, map services, analysis tools)
- restricted (sensitive data, to be shared by Institutions)

✓ target users

- General Public: simple to understand parameters and indicators
- Students, Researchers & Practitioners: access & retrieval of data
- Stakeholders, Professionals & Policy Makers: easy to query and use

✓ user feedback