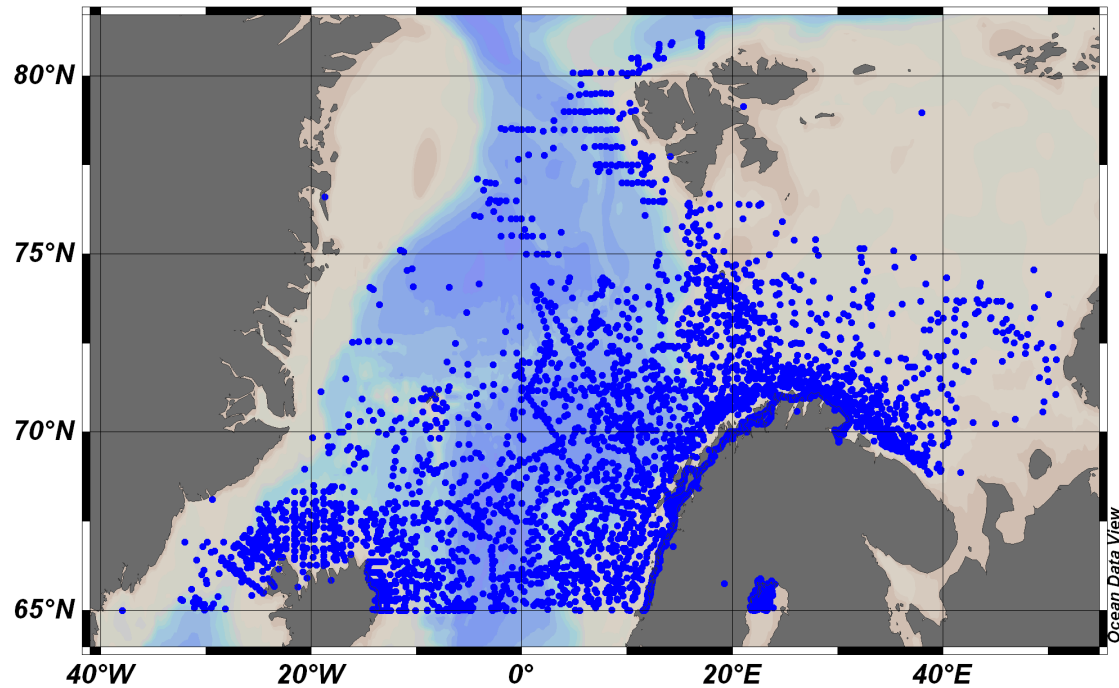
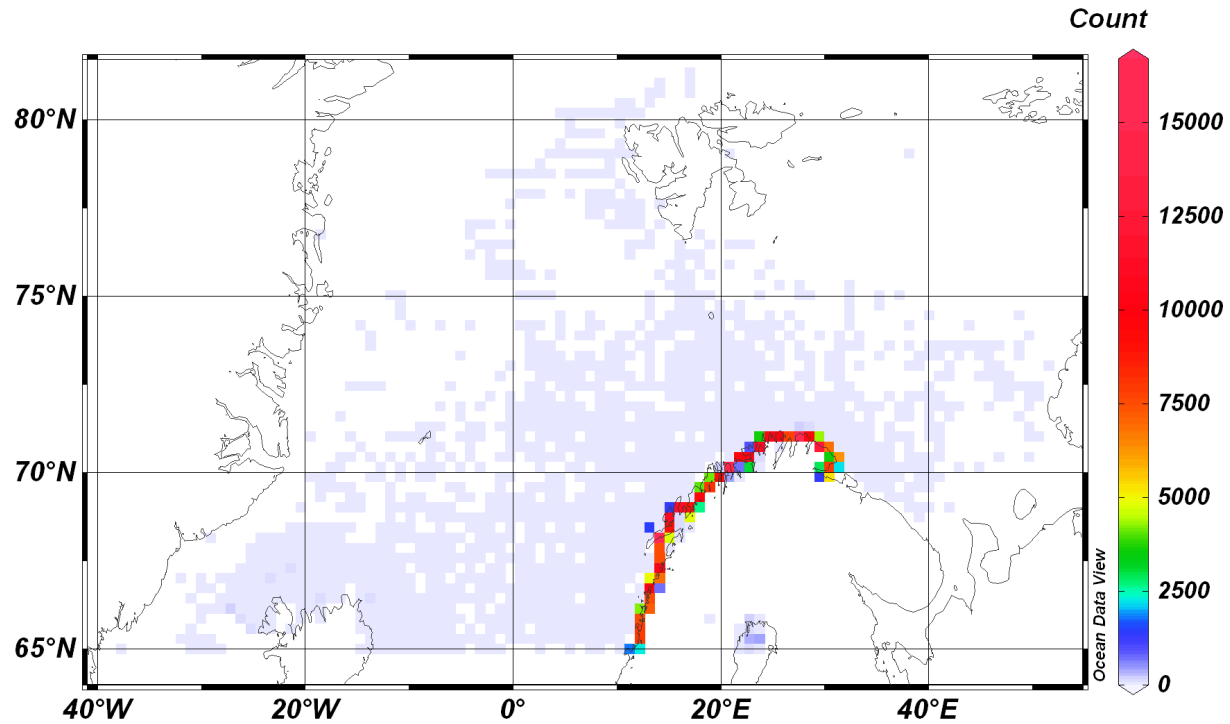


Arctic V1 dataset 1900-2012 geographic distribution



Number of data points

408946 stations



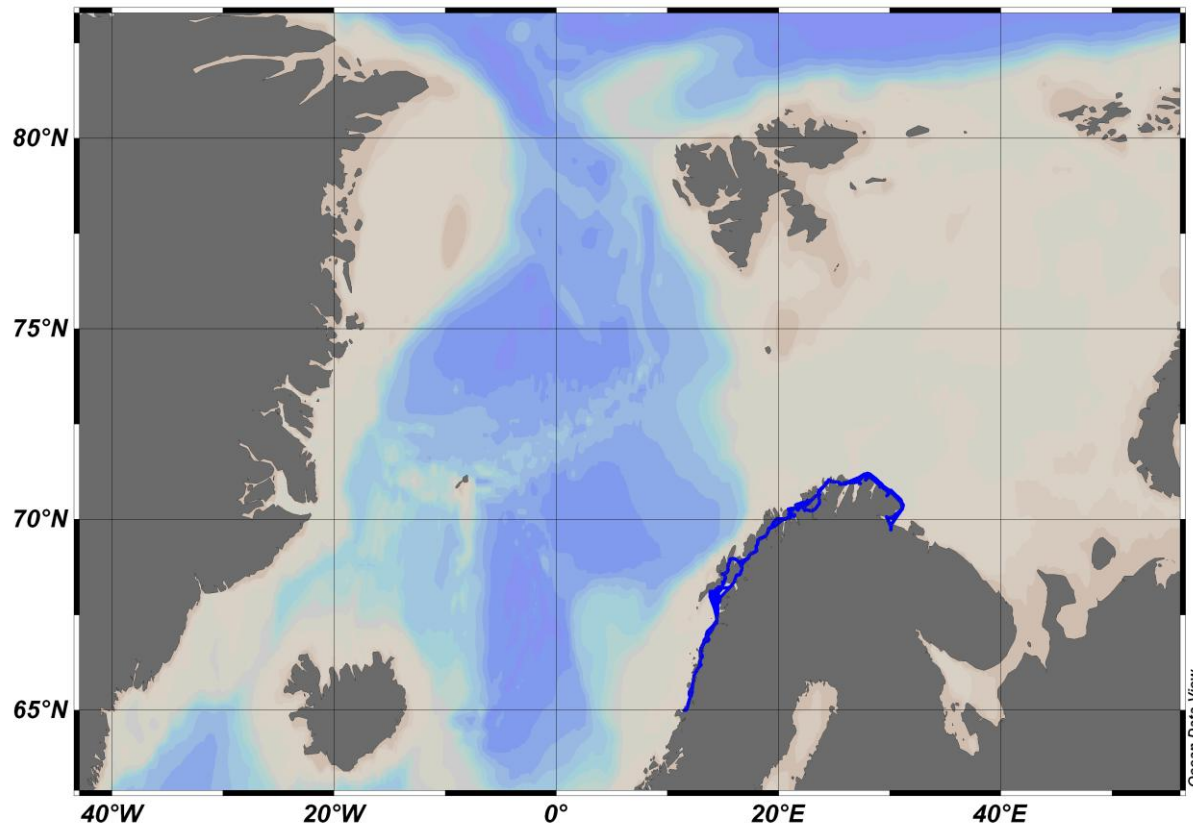
QC steps (1)

- Polygon selection to remove data from
 - Baltic Sea 1235 stations , saved to spreadsheet
- Range check ,
 - Depth range 0 – 4000m
no outliers
 - Temp range -2.5 – 25 deg C
4 outliers saved to file ,all QF = 1
outliers_Temperature_range_-2.5_-_25.0.lst
 - Salinity range 0 – 36 PSU
4 outliers saved to file ,all QF = 4
outliers_Salinity_range_0-36.lst

QC steps (2) ferryboxdata

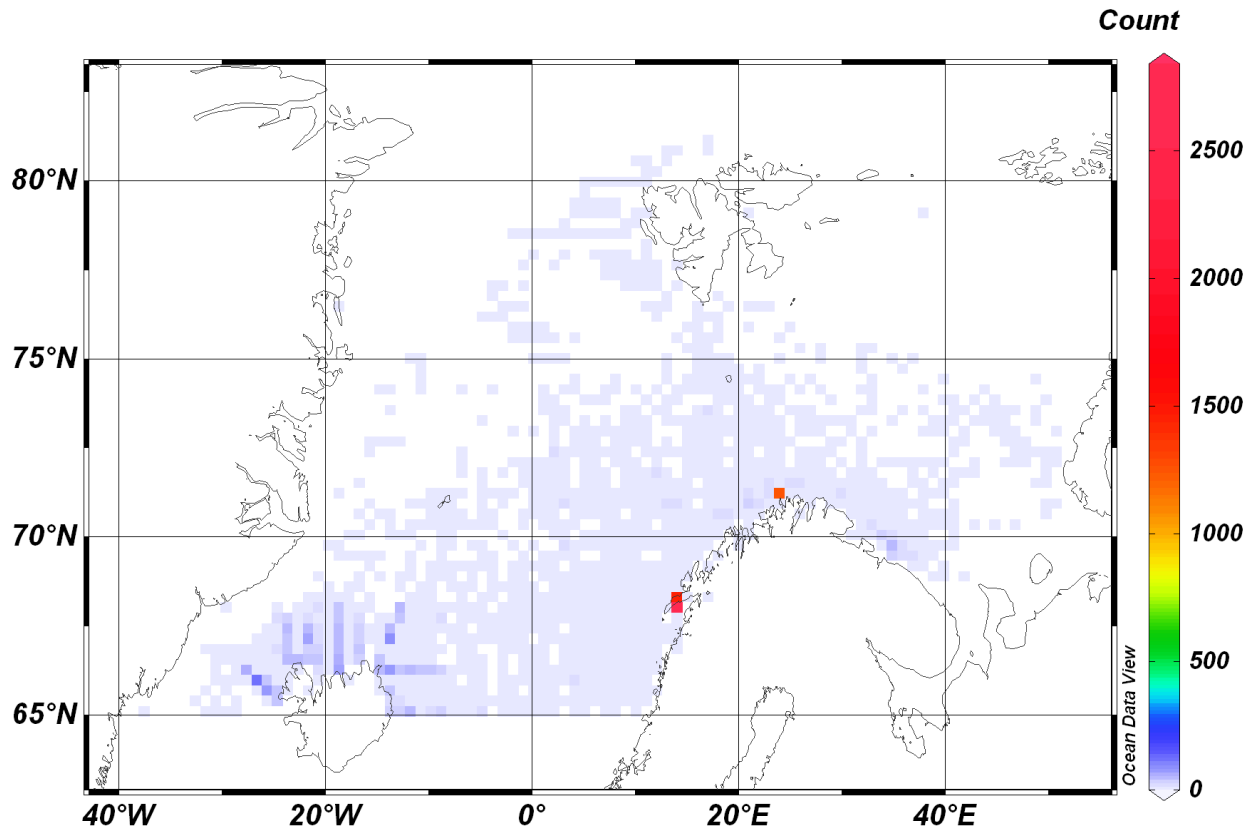
Coastal steamers thermograph data from 4 m depth paths

- Vesteraalen 263078 stations
- Vester_len 53227 stations same ship as above
- Lofoten 78983 stations



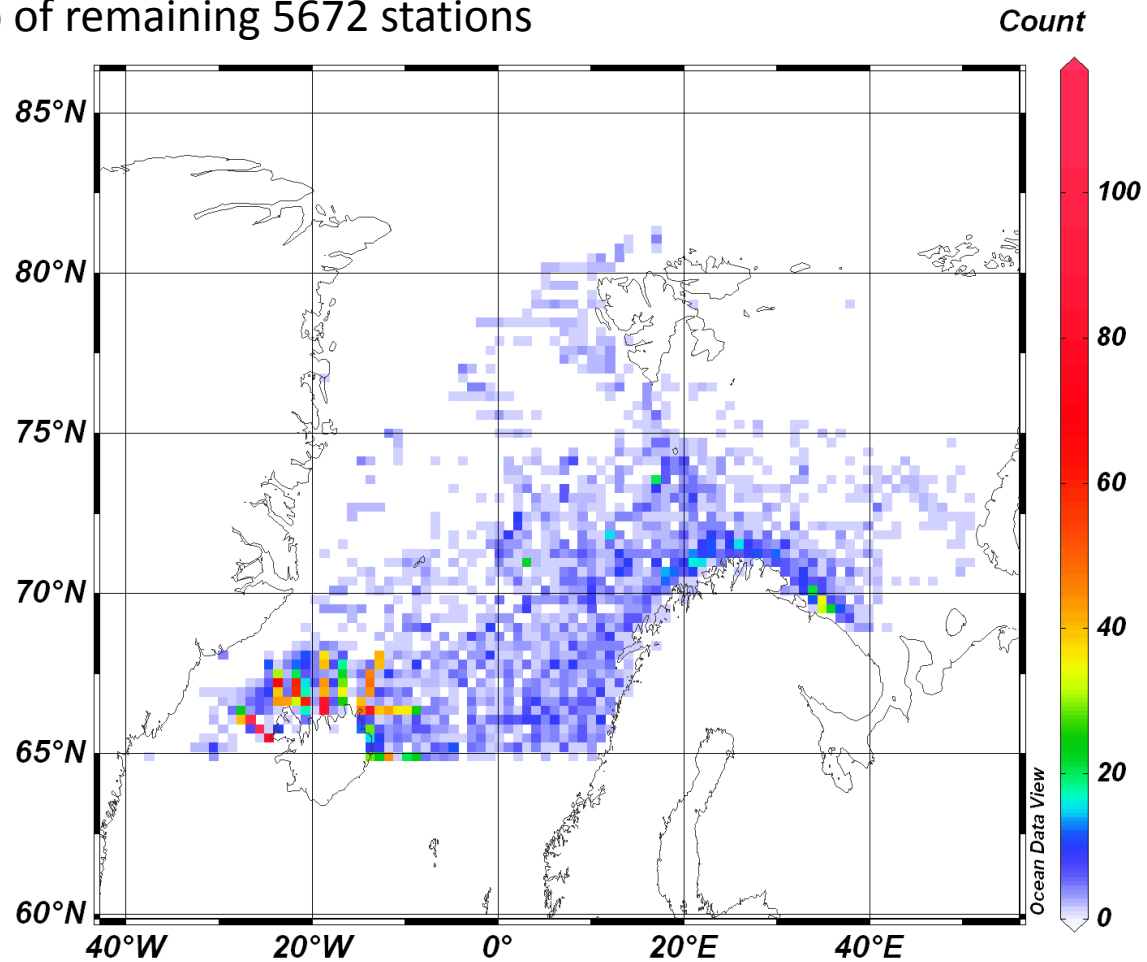
QC steps (3) fixed coastal stations (profile data)

Ingoy	1246 stations	standard depths 1 to 300m
Eggum	1430 stations	standard depths 1 to 200m
Skrova	2840 stations	standard depths 1 to 300m



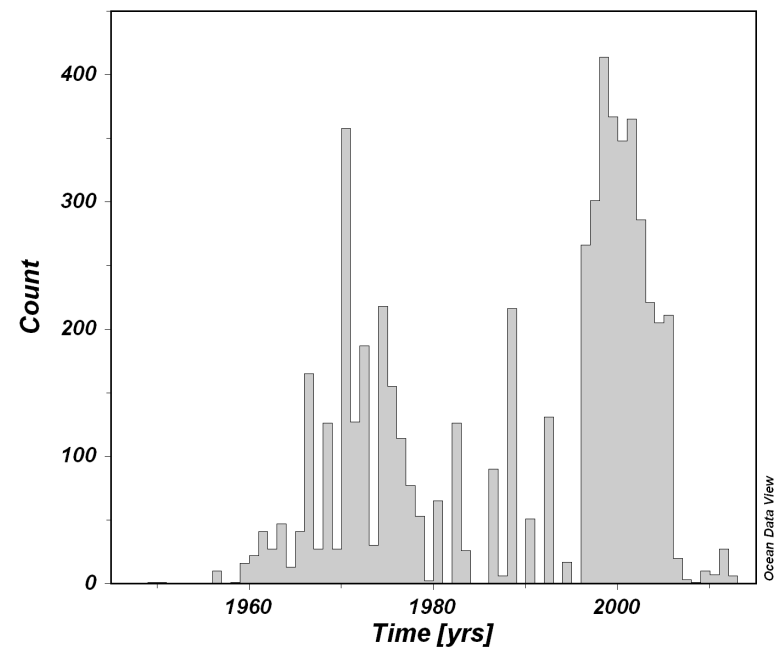
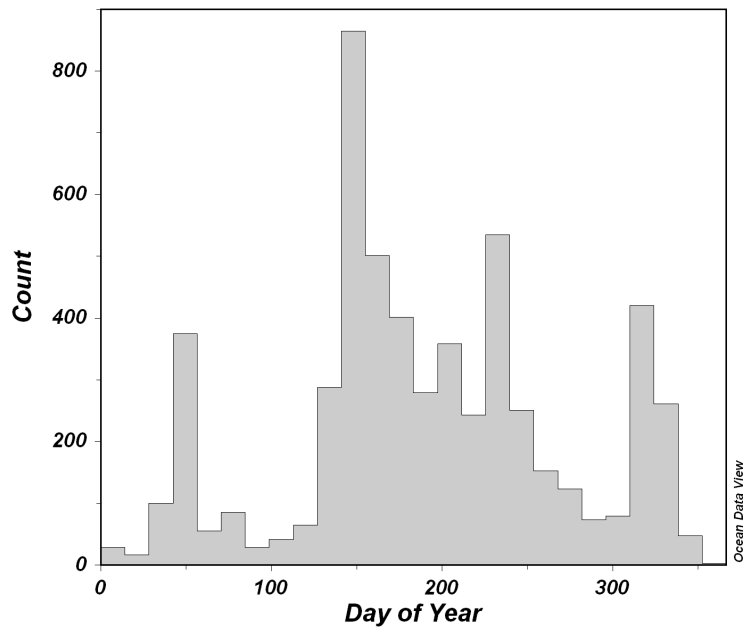
QC steps (4)

Distribution map of remaining 5672 stations



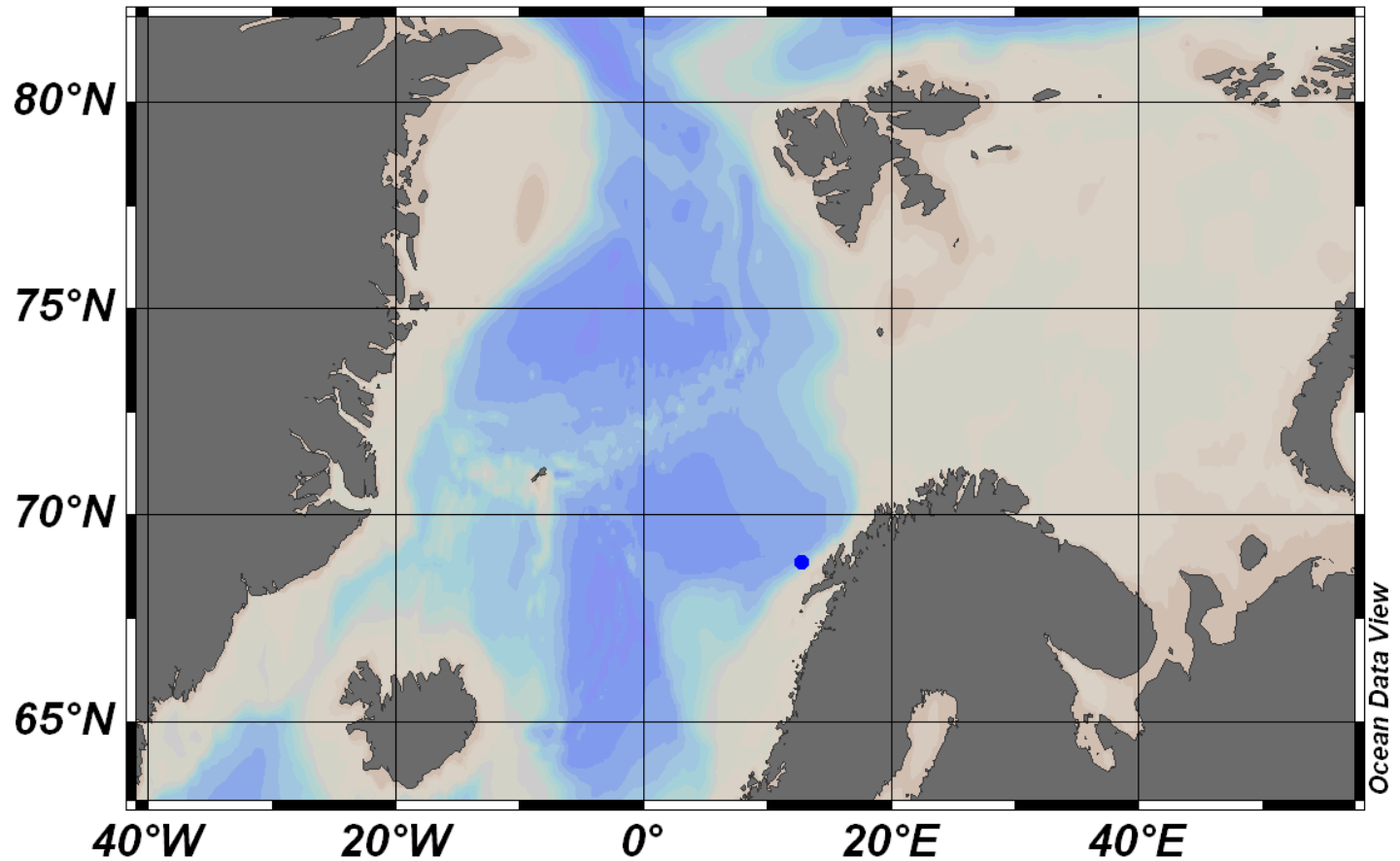
QC steps (5)

season (left) and annual (right) histogram of the remaining 5672 stations



Time series dataset 1900 - 2012

Position of temp recording in 981.5 m

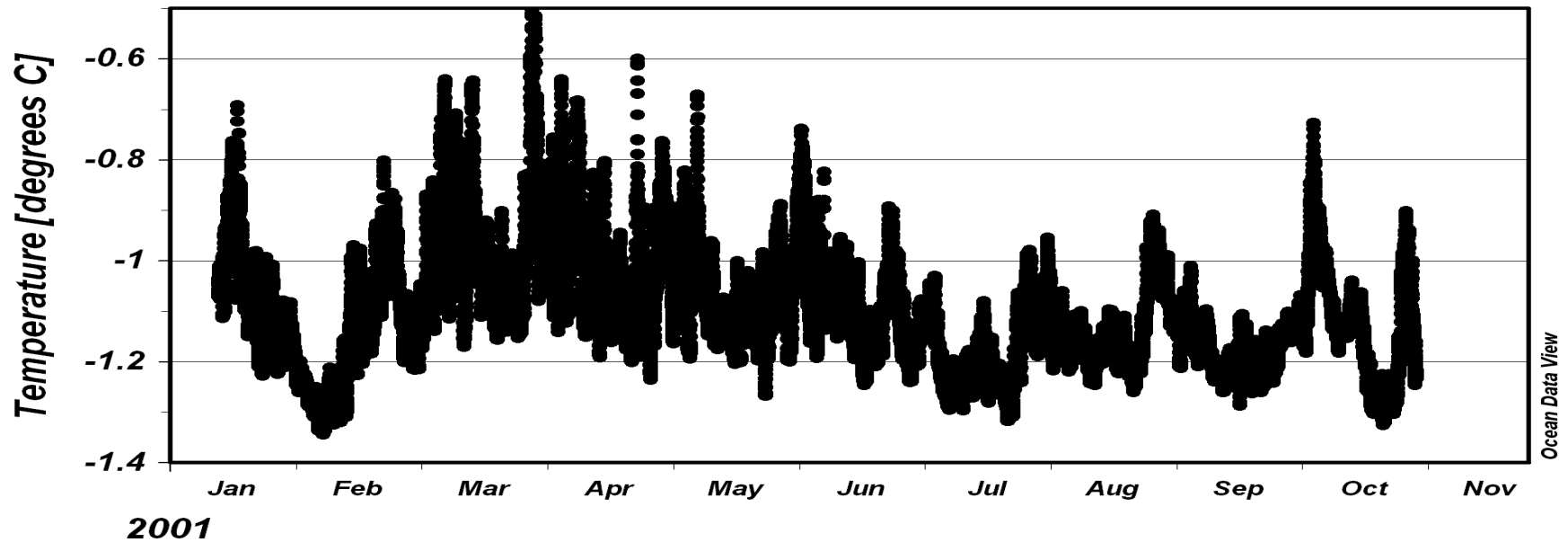


QC steps (1)

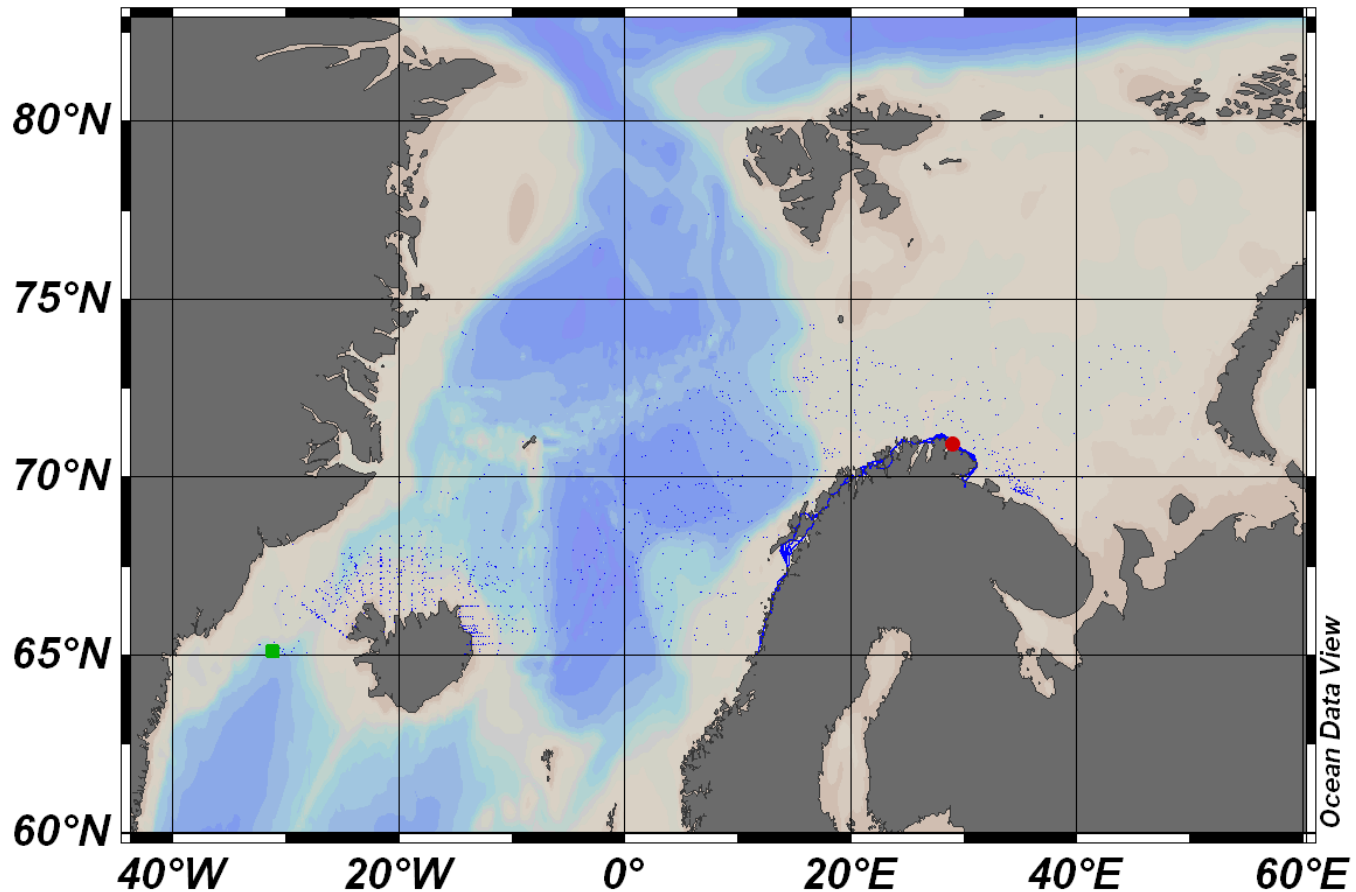
1 series in 2001 from current meter in 981.5 m depth

Temperature only

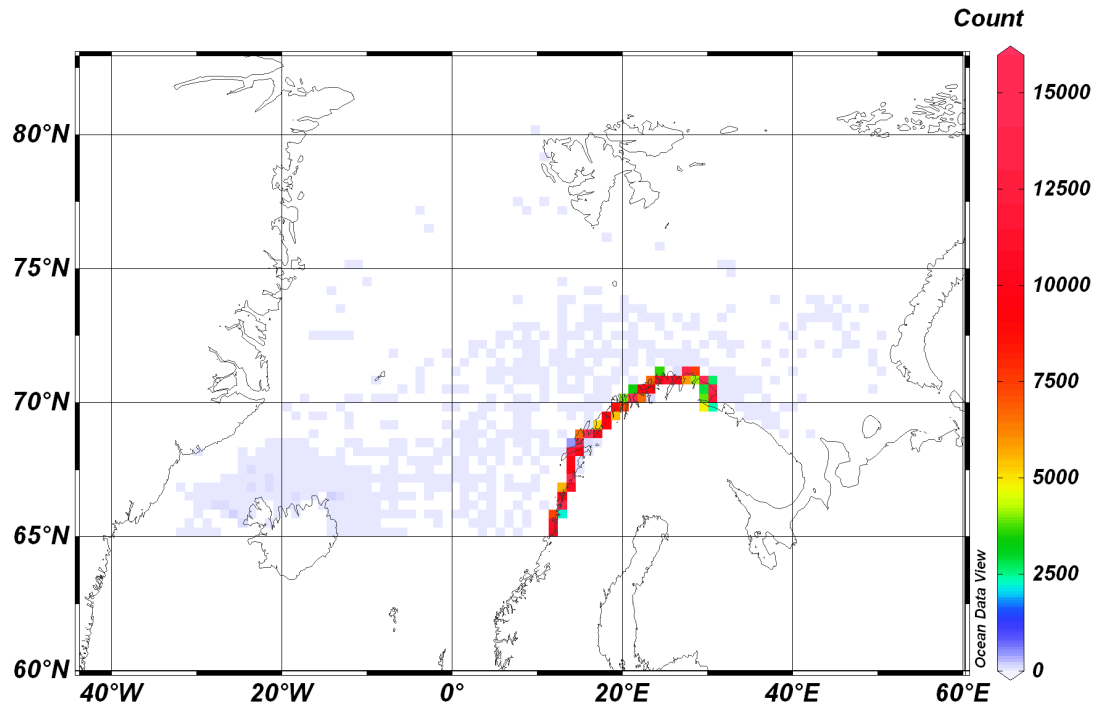
No outliers



Arctic V1 dataset 1990-2012 geographic distribution



- 400098 temperature single depth and 876 C stations



Arctic V1 dataset 1990-2012

