

Arctic Sea Climatology

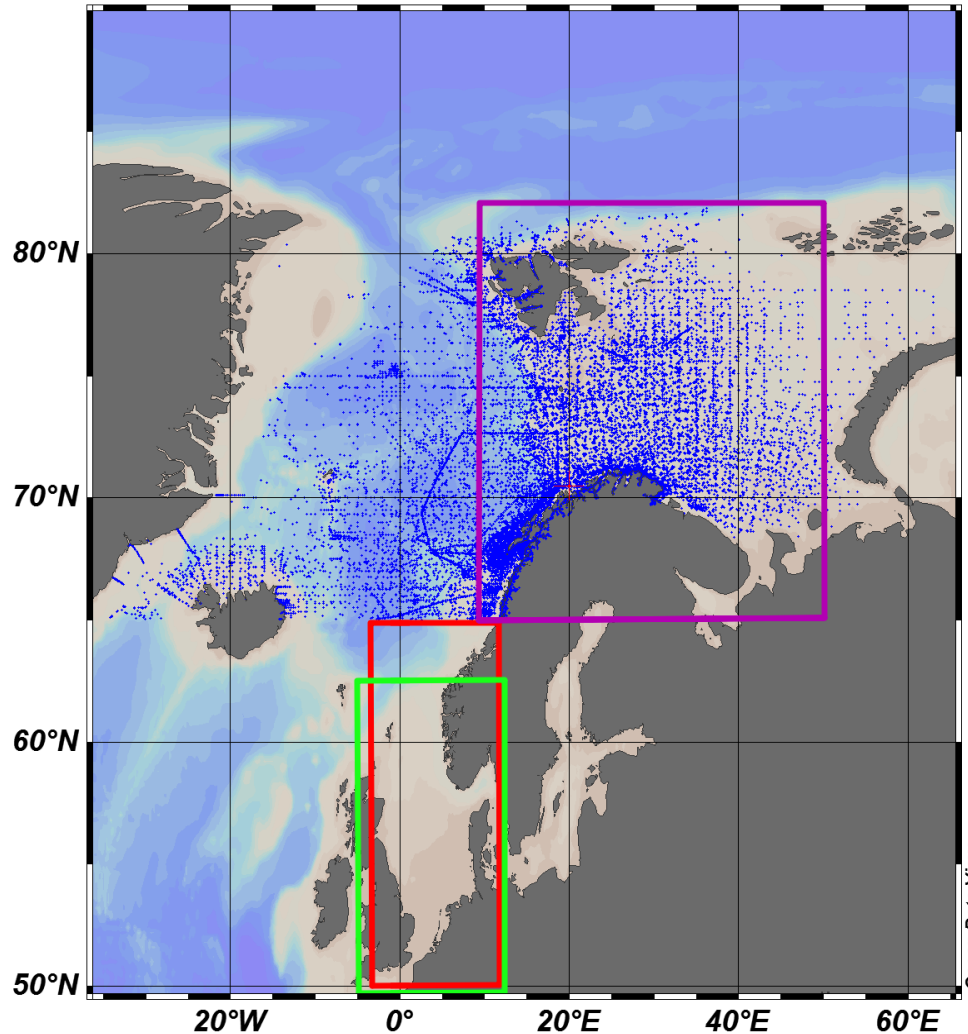
Domain definition SDN reports:

Green – North Sea
5W – 12.25E 49N - 61.75 N

Red – Norwegian Sea
3W – 12E 50N – 65N

Purple – Barents Sea
10E – 55E 65N – 82N

**Arctic Sea used domain:
40W–65E 65N–82N**

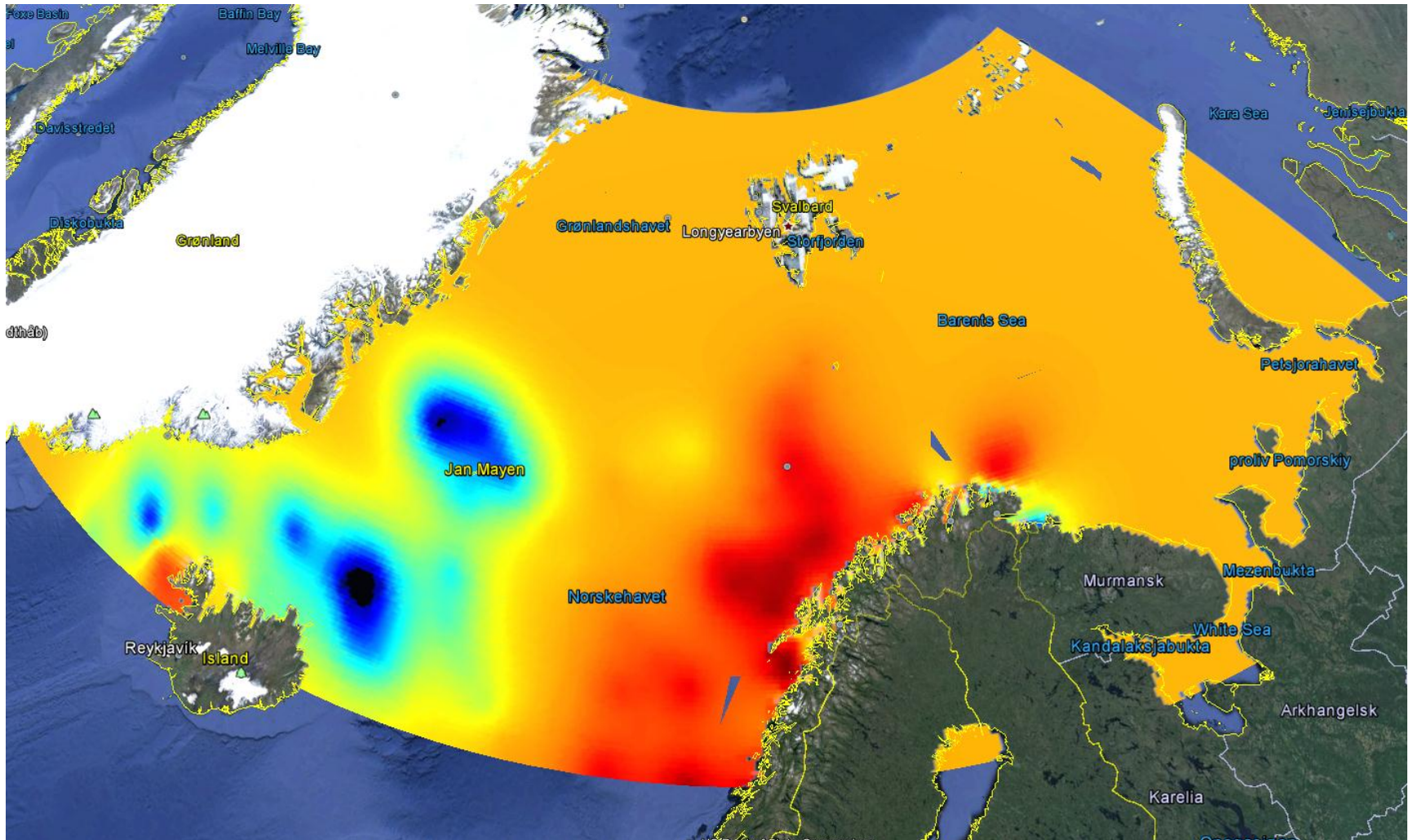


Arctic Sea Climatology

- Used diva 4.6.8 on the SeaDataNet **V1.1** data in the Arctic.
- Monthly data, Temperature and Salinity
- Year **19002013**
- param.par xori **-40** yori **65**; dx **0.2** dy **0.1**; nx **526** ny **171**
- contour.depth **3000,2500,2000,1750,1500,1400,1300,1200,1100,1000,900,800,700,600,500,400,300,250,200,150,125,100,75,50,30,20,10,0**
- Temperature.bounds **-3** to **21**
- Salinity.bounds **25** to **36**
- Quality flags **0 1 5**
- No reference field, Diva interpolate to the mean of the data.
- Two4D netCDF files, each of 900MB as the result.

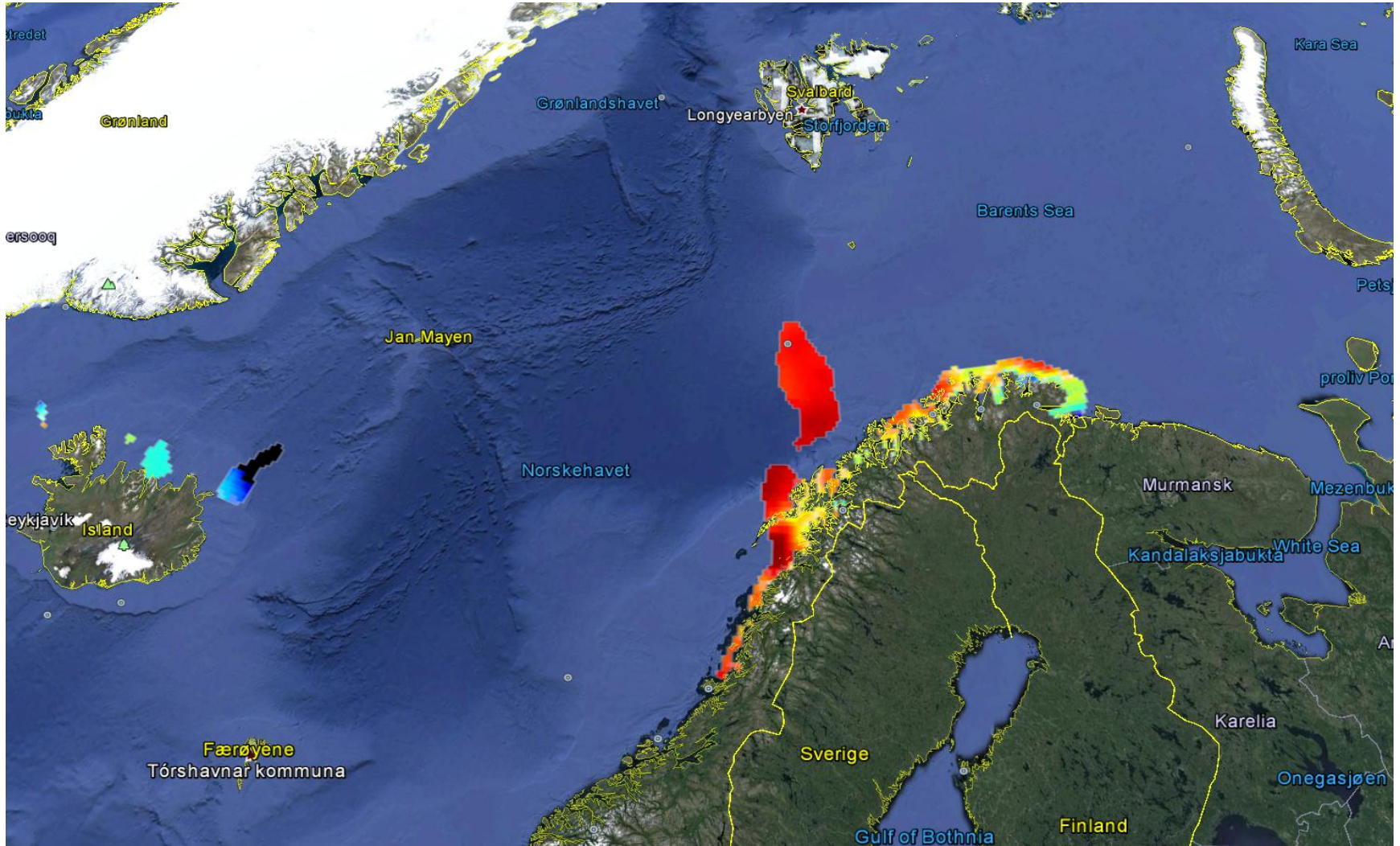
Arctic Sea Climatology

T 0m December 19002013



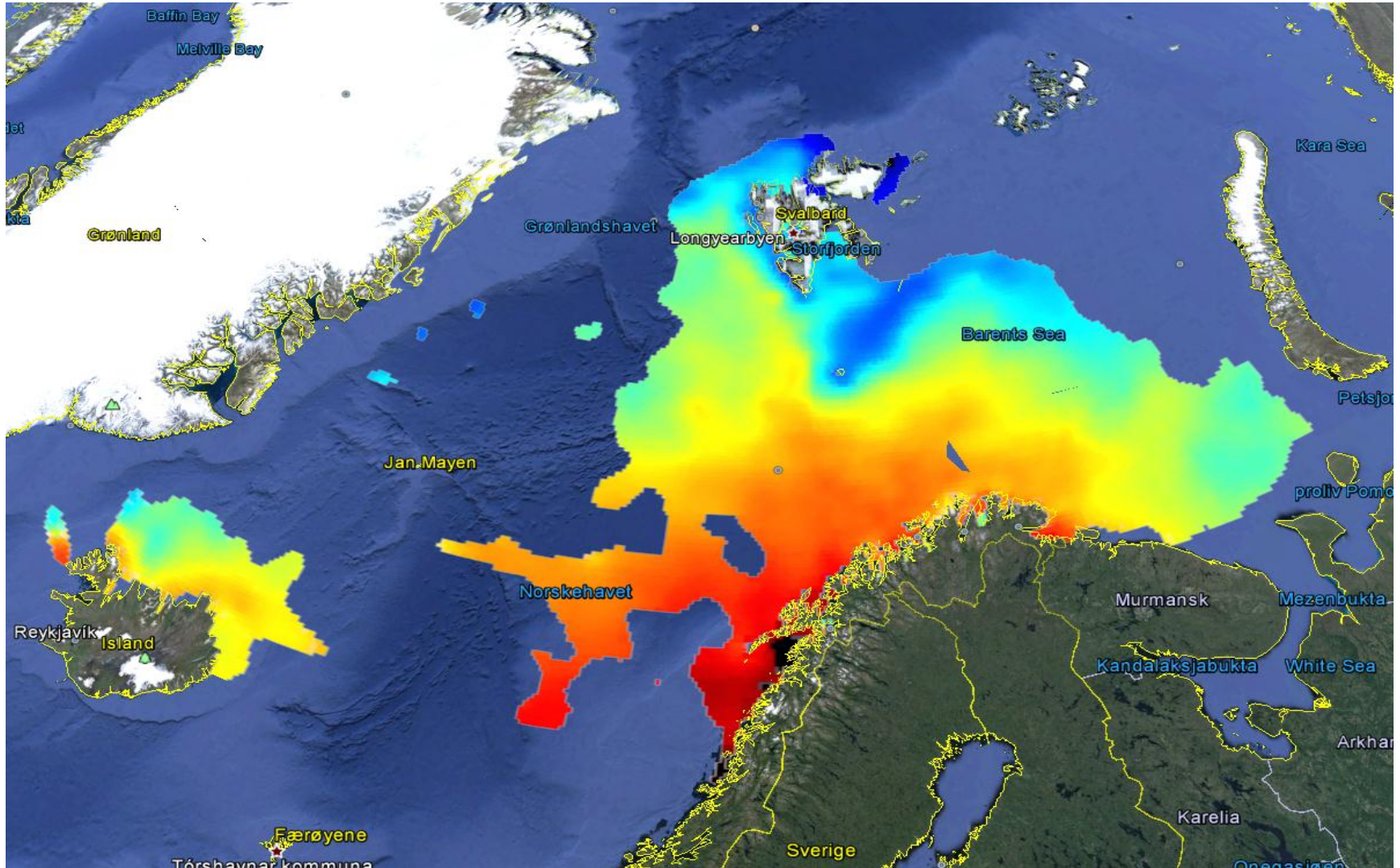
Arctic Sea Climatology

masked T 0.5 0m December 19002013



Arctic Sea Climatology

masked T 0.5 0m August19002013



Arctic Sea Climatology masked T 0.5 0m March 1900-2013

