

## February 2014 – SeaDataNet catalogues follow-up

Here are the graphs for monitoring the SeaDataNet catalogues content (all documents are available on the extranet of the project under [SeaDataNet II> Follow up](#)).

In February 2014, we are pleased to see **increases on all catalogues**: EDMO (+16), EDMED (+1), EDMERP(+21), EDIOS (+1), CSR (+64) and CDI (+38 763).

15 partners have input or deleted data in the CDI catalogue, for a total increase of 38 763 records. Which gives a total of **more than 1.5 Million** (1 537 556) records in the CDI catalogue.

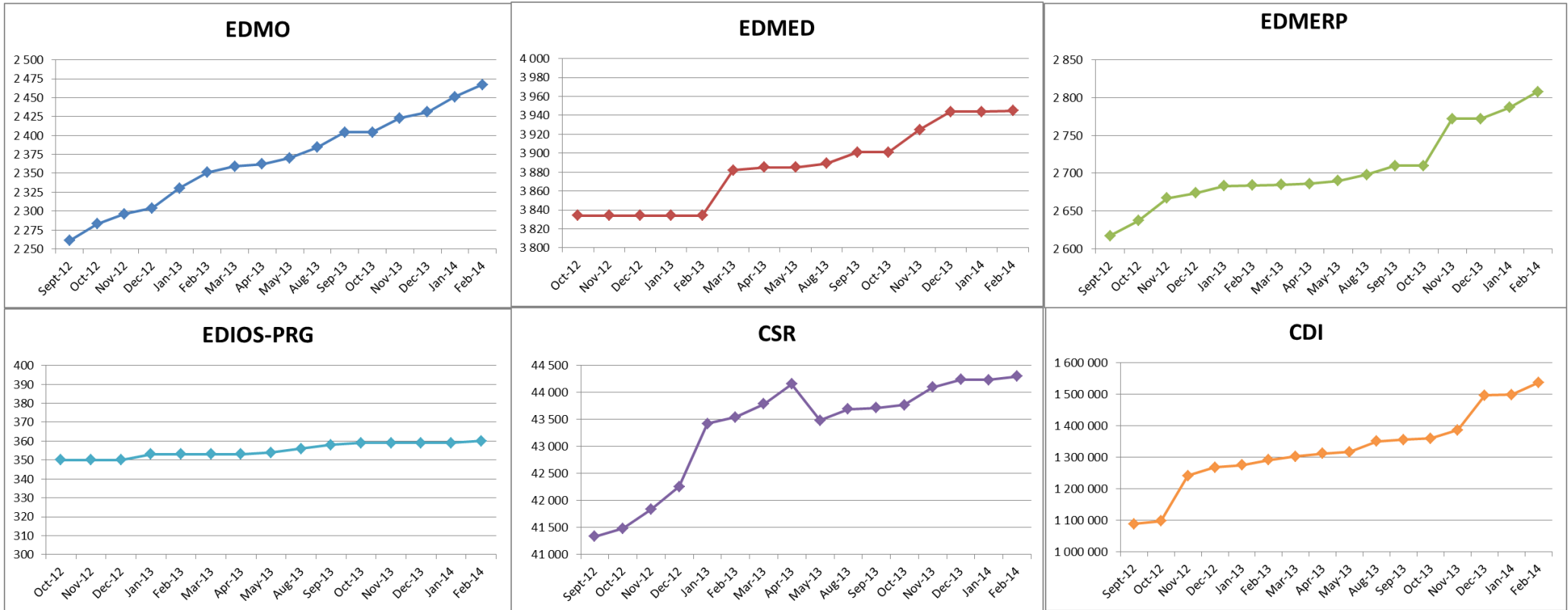
Details of last month upgrade per partners are the following:

Data centre	Country	Number of new records
BODC	UK	+7 873
BSH-DOD	Germany	+437
HCMR	Greece	+1 250
IEO	Spain	+1 773
IFREMER	France	+4 852
IHPT	Portugal	+1 159
IMR	Norway	+14 137
LIAE	Latvia	+189
METU-IMS	Turkey	+2 468
MHI	Ukraine	+104
MI	Ireland	+43
MSI	Estonia	+577
OGS	Italy	+5
RIHMI	Russia	+4 038
UniHb	Germany	-42
<b>Total</b>		<b>+38 863</b>

One partner, not in the SeaDataNet consortium, has deleted 100 entries from his CDIs data, which explains the difference between the total increase of CDI catalogue and the increase by SeaDataNet partners.

Catalogue	Sept-12	Oct-12	Nov-12	Dec-12	Jan-13	Feb-13	Mar-13	Apr-13	May-13	Aug-13	Sep-13	Oct-13	Nov-13	Dec-13	Jan-14	Feb-14
EDMO	2 261	2 283	2 296	2 304	2 330	2 351	2 359	2 362	2 370	2 384	2 404	2 404	2 423	2 431	2 451	2 467
EDMED	3 834	3 834	3 834	3 834	3 834	3 834	3 882	3 885	3 885	3 889	3 901	3 901	3 925	3 944	3 944	3 945
EDMERP	2 617	2 637	2 667	2 674	2 683	2 684	2 685	2 686	2 690	2 698	2 710	2 710	2 772	2 772	2 787	2 808
EDIOS-PRG	350	350	350	350	353	353	353	353	354	356	358	359	359	359	359	360
CSR	41 330	41 481	41 832	42 256	43 423	43 539	43 782	44 153	43 479	43 687	43 713	43 765	44 094	44 236	44 230	44 294
CDI	1 088 322	1 097 399	1 241 010	1 267 669	1 274 982	1 291 491	1 302 629	1 311 827	1 317 191	1 350 455	1 356 245	1 360 236	1 386 446	1 496 950	1 498 793	1 537 556

Figure 1 - Global counts on all catalogues



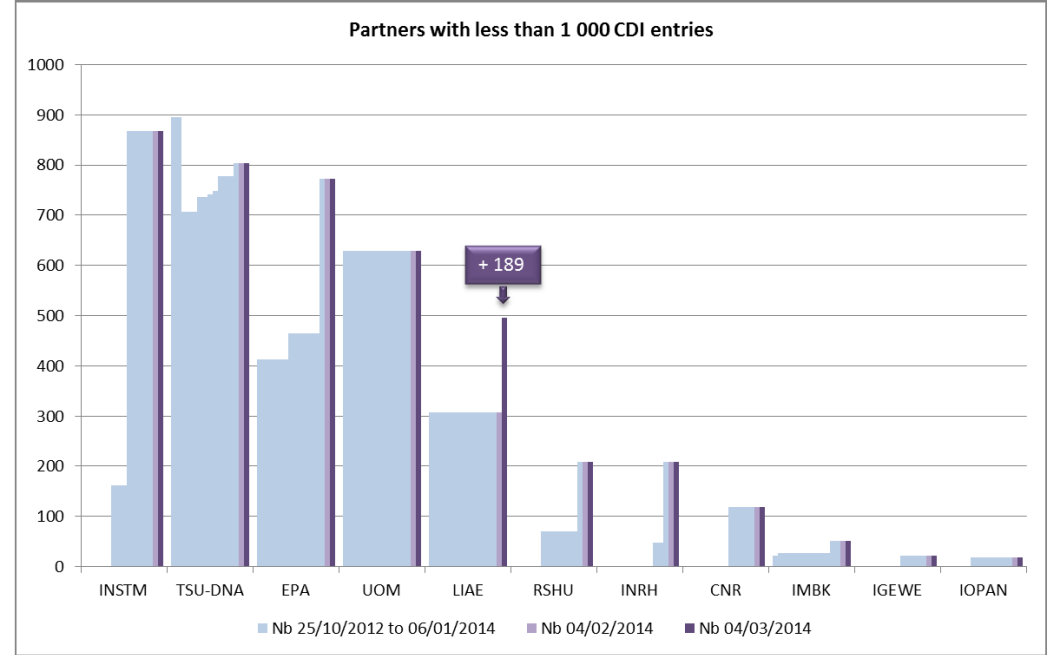
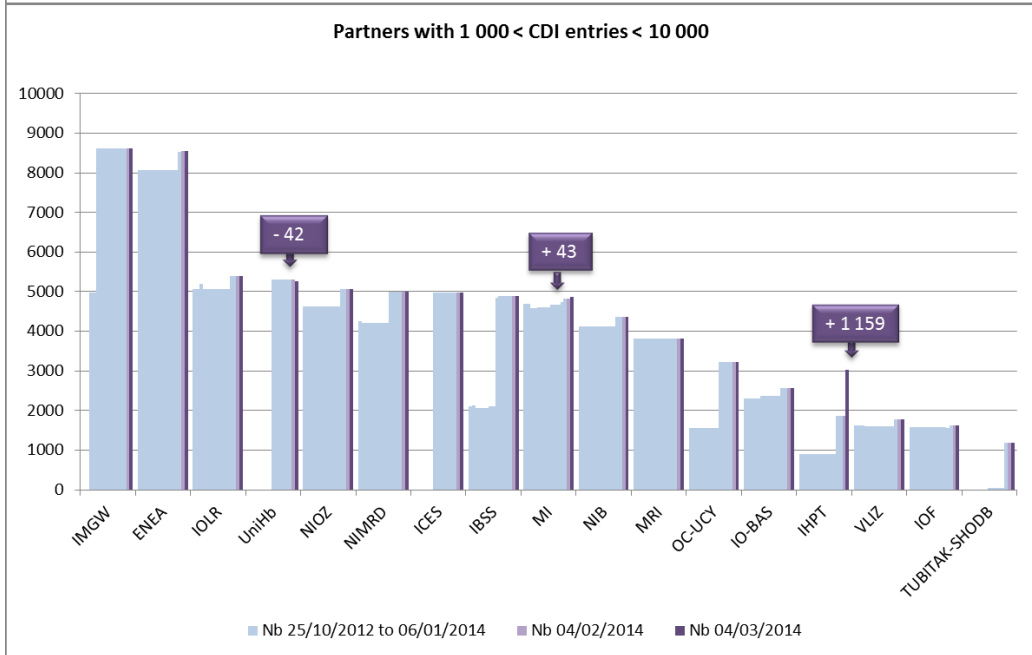
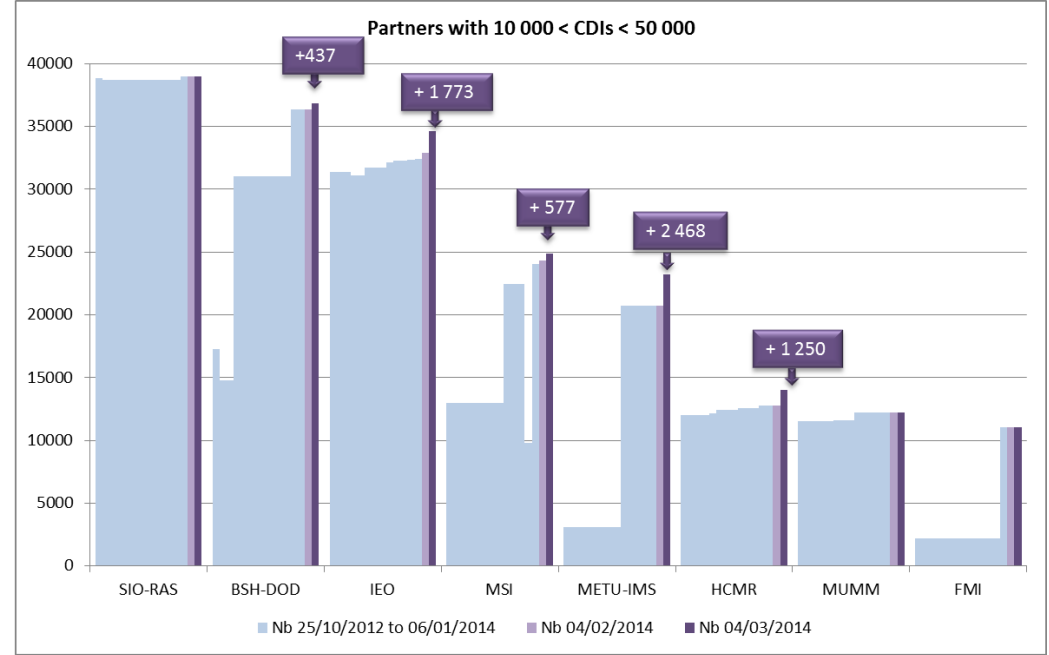
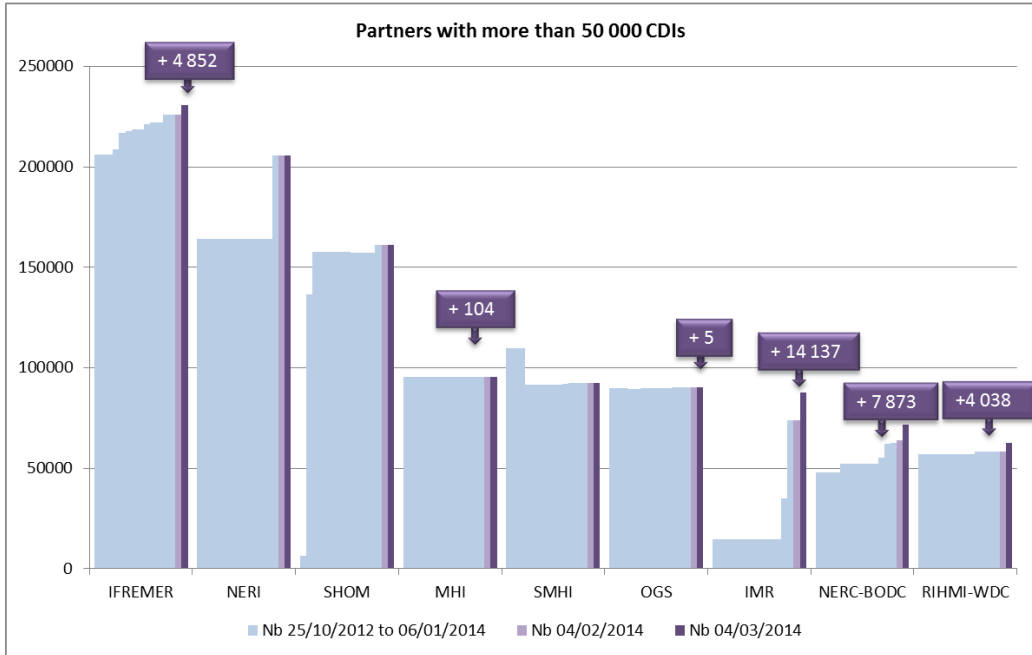


Figure 2 - Nb of CDI per partner, data centres with new data in February 2014