

April 2014 – SeaDataNet catalogues follow-up

Here are the graphs for monitoring the SeaDataNet catalogues content (all documents are available on the extranet of the project under [SeaDataNet II> Follow up](#)).

In April 2014, still significant **increases on catalogues**: **EDMO** (+34), **CSR** (+71) and **CDI** (+8 100), not much on **EDMERP**(+2) and on **EDMED** (+2) while **no activities on EDIOS**.

8 partners have input data in the CDI catalogue, for a total increase of 6 441 records.

Details of last month upgrades per partners are the following:

| CDI partner | Country | Number of new records |
|----------------|----------|-----------------------|
| BSH-DOD | Germany | 1 |
| FMI | Finland | 1 |
| IEO | Spain | 311 |
| IFREMER | France | 2 165 |
| IHPT | Portugal | 37 |
| IMGW | Poland | 2 726 |
| LIAE | Latvia | 503 |
| MHI | Ukraine | 697 |
| Total | | 6 441 |

7 partners, not in the SeaDataNet consortium, have input a total of 1 659 new entries in the CDI catalogue, which explains the difference between the total increase of CDI catalogue (8 100) and the increase by SeaDataNet partners (6 441).

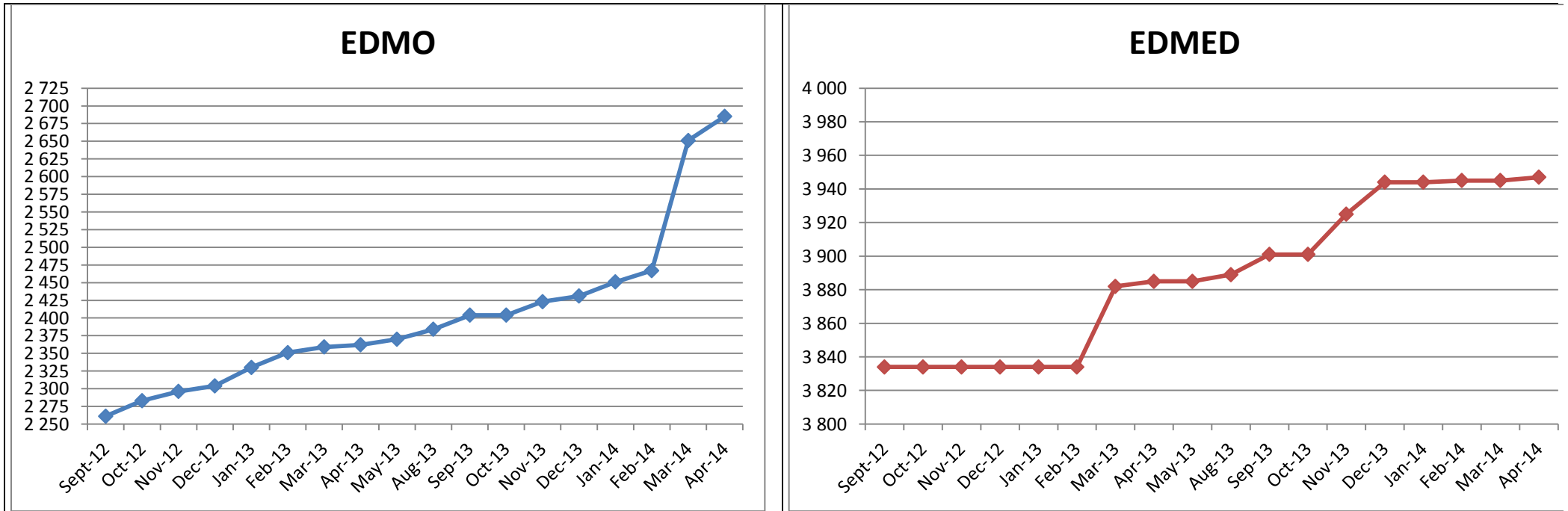
Since the beginning of the follow-up reports (October 2012), the global increase in CDI, per partner, is the following: Note that for SMHI and TSU-DNA, the negative global increase is due to the change in their time series management (SMHI) or the duplicates detection (TSU-DNA).

| CDI partner | Name of partner | | Country | Total CDIs (14/05/2014) | Global increase |
|---------------------------|-----------------|--|--------------------|----------------------------|--------------------|
| 5 | SMHI | Swedish Meteorological and Hydrological Institute | Sweden | 92 473 | -17 054 |
| 35 | TSU-DNA | Iv.Javakhishvili Tbilisi State University | Georgia | 834 | -61 |
| 25 | MRI | Marine Research Institute (MRI) | Iceland | 3 824 | 0 |
| 38 | UOM | International Ocean Institute - Malta Operational | Malta | 628 | 0 |
| Associated partner | IOPAN | IOPAN | Poland | 18 | 18 |
| Subcontractor | IGEWE | IGEWE | Albania | 21 | 21 |
| Subcontractor | IMBK | Institute of Marine Biology (IMBK) | Montenegro | 51 | 29 |
| 36 | IOF | Institute of Oceanography and Fisheries | Croatia | 1 625 | 49 |
| 41 | CNR | CNR | Italy | 118 | 118 |
| 31 | SIO-RAS | P.P.Shirshov Institute of Oceanology-RAS | Russian Federation | 38 973 | 150 |
| 20 | MI | Marine Institute | Ireland | 4 875 | 174 |
| Subcontractor | INRH | Institut National de Recherche Halieutique | Morocco | 208 | 208 |
| Subcontractor | RSHU | RSHU | Russian Federation | 209 | 209 |
| 37 | NIB | National Institute of Biology - NIBMarine Biology Station | Slovenia | 4 370 | 250 |
| 40 | IOLR | Israel Oceanographic and Limnological Research (IOLR) | Israel | 5 399 | 326 |
| 24 | VLIZ | Flanders Marine Institute | Belgium | 1 967 | 348 |
| 30 | EPA | Environmental Protection Agency (EPA) | Lithuania | 772 | 359 |
| 22 | NIOZ | NIOZ Royal Netherlands Institute for Sea Research | Netherlands | 5 075 | 446 |
| 10 | ENEA | ENEA Centro Ricerche Ambiente Marino - La Spezia | Italy | 8 560 | 486 |
| 33 | IO-BAS | Bulgarian National Oceanographic Data Centre(BGODC) | Bulgaria | 2 842 | 534 |
| 23 | MUMM | Management Unit of the North Sea and Scheldt estuary Mathematical Models | Belgium | 12 249 | 716 |
| 32 | MHI | Marine Hydrophysical Institute | Ukraine | 96 074 | 726 |
| Subcontractor | INSTM | Institut National des Sciences et Technologies de la Mer | Tunisia | 867 | 867 |
| 29 | LIAE | Latvian Institute of Aquatic Ecology | Latvia | 1 246 | 939 |

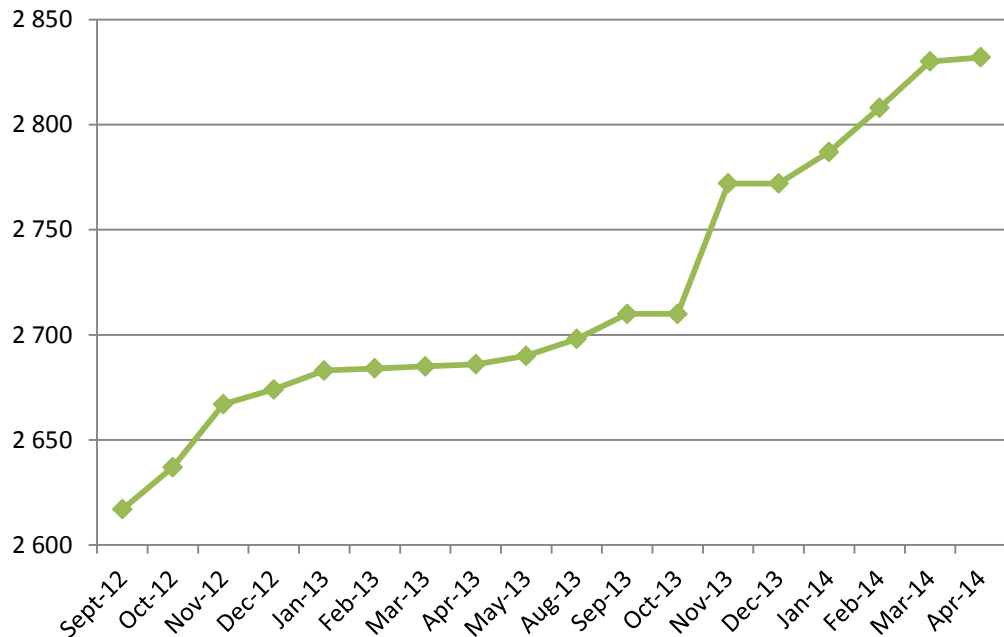
| | | | | | |
|----------------------|---------------|--|--------------------|------------------|----------------|
| 34 | NIMRD | National Institute for Marine Research and Development Grigore Antipa | Romania | 5 247 | 993 |
| 44 | TUBITAK-SHODB | Turkiye Bilimsel ve Teknolojik Arastirma Kurumu | Turkey | 1 185 | 1 185 |
| 39 | OC-UCY | Cyprus Oceanography Center | Cyprus | 3 245 | 1 690 |
| 7 | HCMR | Hellenic Centre for Marine Research | Greece | 14 113 | 2 089 |
| 21 | IHPT | IHPT, Hydrographic institute | Portugal | 3 298 | 2 393 |
| 42 | IBSS | Institute of Biology of the Southern Seas | Ukraine | 4 897 | 2 791 |
| 6 | IEO | IEO/Spanish Oceanographic Institute | Spain | 35 254 | 3 839 |
| 18 | ICES | ICES | Denmark | 4 986 | 4 986 |
| 43 | UniHb | Universitaet Bremen | Germany | 5 264 | 5 264 |
| 9 | RIHMI-WDC | All-Russia Research Institute of Hydrometeorological Information - World Data Centre (RIHMI-WDC) National Oceanographic Data Centre (NODC) | Russian Federation | 62 488 | 5 363 |
| 8 | OGS | OGS (Istituto Nazionale di Oceanografia e di Geofisica Sperimentale) | Italy | 99 319 | 9 721 |
| 26 | FMI | Finnish Meteorological Institute | Finland | 13 500 | 11 289 |
| 27 | IMGW | Instytut Meteorologii i Gosodarki Wodnej | Poland | 11 340 | 11 340 |
| 28 | MSI | Marine Systems Institute at Tallinn University of Technology | Estonia | 25 759 | 12 762 |
| 4 | BSH-DOD | German Oceanographic Datacentre (NODC) | Germany | 37 076 | 19 798 |
| 12 | METU-IMS | Institute of Marine Sciences, Middle East Technical University | Turkey | 23 212 | 20 130 |
| 3 | NERC-BODC | British Oceanographic Data Centre | United Kingdom | 75 690 | 27 633 |
| 1 | IFREMER | IFREMER / IDM/SISMER | France | 234 606 | 28 407 |
| 17 | NERI | Aarhus University | Denmark | 205 488 | 41 334 |
| 16 | IMR | Institute of Marine Research - Norwegian Marine Data Centre (NMD) | Norway | 87 829 | 73 036 |
| Subcontractor | SHOM | SHOM (Service Hyfrographique et Océanographique de la Marine) | France | 161 030 | 154 607 |
| Total | | | | 1 398 104 | 430 508 |

| Catalogue | Sept-12 | Oct-12 | Nov-12 | Dec-12 | Jan-13 | Feb-13 | Mar-13 | Apr-13 | May-13 | Aug-13 | Sep-13 | Oct-13 | Nov-13 | Dec-13 | Jan-14 | Feb-14 | Mar-14 | Apr-14 |
|-----------|-----------|-----------|-----------|-----------|-----------|-----------|-----------|-----------|-----------|-----------|-----------|-----------|-----------|-----------|-----------|-----------|-----------|-----------|
| EDMO | 2 261 | 2 283 | 2 296 | 2 304 | 2 330 | 2 351 | 2 359 | 2 362 | 2 370 | 2 384 | 2 404 | 2 404 | 2 423 | 2 431 | 2 451 | 2 467 | 2 651 | 2 685 |
| EDMED | 3 834 | 3 834 | 3 834 | 3 834 | 3 834 | 3 834 | 3 882 | 3 885 | 3 885 | 3 889 | 3 901 | 3 901 | 3 925 | 3 944 | 3 944 | 3 945 | 3 945 | 3 947 |
| EDMERP | 2 617 | 2 637 | 2 667 | 2 674 | 2 683 | 2 684 | 2 685 | 2 686 | 2 690 | 2 698 | 2 710 | 2 710 | 2 772 | 2 772 | 2 787 | 2 808 | 2 830 | 2 832 |
| EDIOS-PRG | 350 | 350 | 350 | 350 | 353 | 353 | 353 | 353 | 354 | 356 | 358 | 359 | 359 | 359 | 359 | 360 | 360 | 360 |
| CSR | 41 330 | 41 481 | 41 832 | 42 256 | 43 423 | 43 539 | 43 782 | 44 153 | 43 479 | 43 687 | 43 713 | 43 765 | 44 094 | 44 236 | 44 230 | 44 294 | 44 447 | 44 518 |
| CDI | 1 088 322 | 1 097 399 | 1 241 010 | 1 267 669 | 1 274 982 | 1 291 491 | 1 302 629 | 1 311 827 | 1 317 191 | 1 350 455 | 1 356 245 | 1 360 236 | 1 386 446 | 1 496 950 | 1 498 793 | 1 537 556 | 1 558 428 | 1 566 528 |

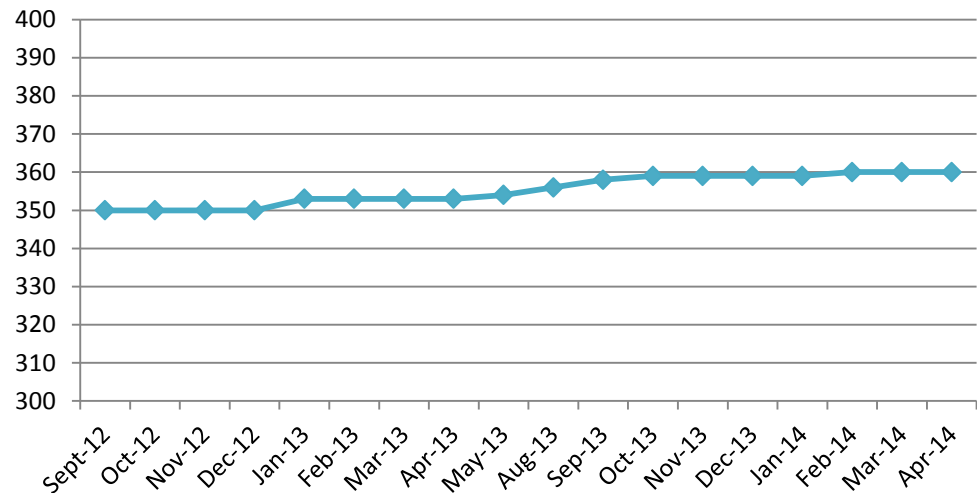
Figure 1 - Global counts on all catalogues



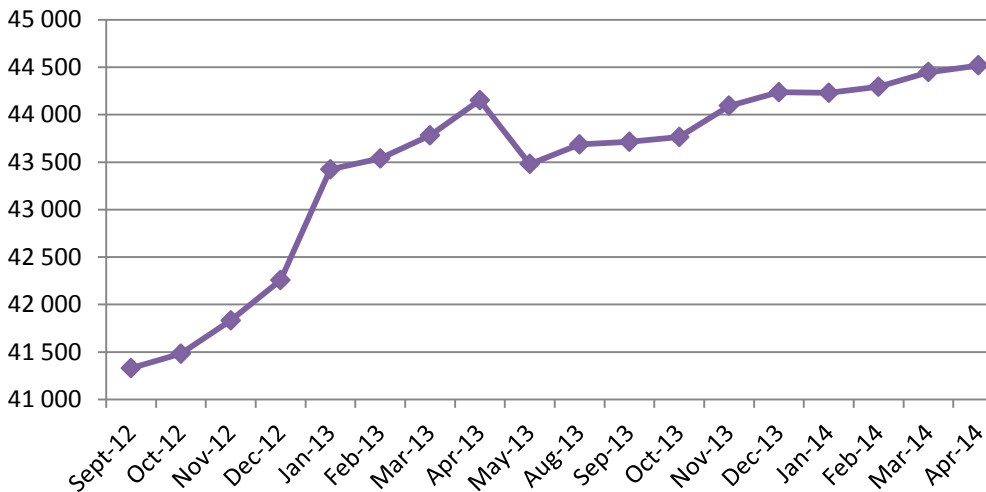
EDMERP



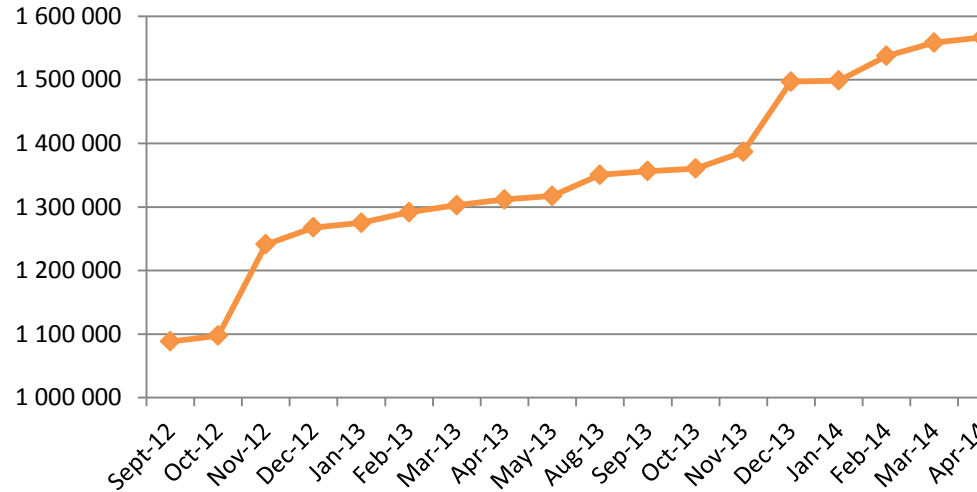
EDIOS-PRG



CSR



CDI



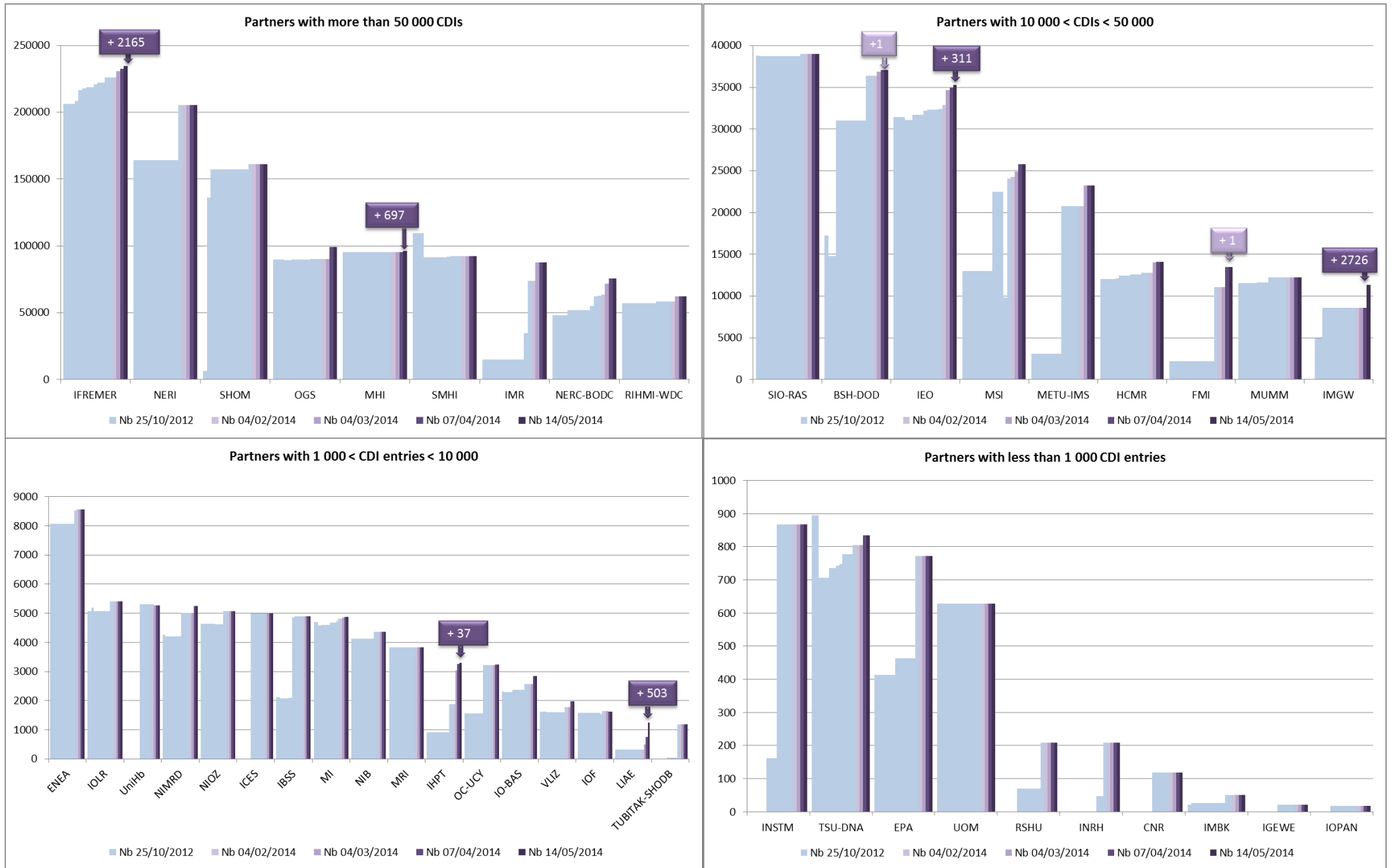


Figure 2 - Nb of CDI per partner, data centres with new data input in April 2014