

January 2015 – SeaDataNet catalogues follow-up

Here are the graphs for monitoring the SeaDataNet catalogues content (all documents are available on the extranet of the project under [SeaDataNet II> Follow up](#)).

In January 2015, global increases on catalogue CDI (+51 737), CSR (+320), not much on EDMED (+15), EDMERP (+1), and decrease on EDMO (-2),

No activities on EDIOS-PRG.

Details of last month upgrades per partners are the following:

CDI partner	Country	Last increase
HCMR	Greece	807
ICES	Denmark	9903
IEO	Spain	57
IFREMER	France	8336
IHPT	Portugal	-209
LIAE	Latvia	10
METU-IMS	Turkey	118
MI	Ireland	-2
MSI	Estonia	13
MUMM	Belgium	61
NERC-BODC	United Kingdom	132
NIMRD	Romania	-6
NIOZ	Netherlands	9
OGS	Italy	14
RIHMI-WDC	Russian Federation	28979
SHOM	France	-6
SMHI	Sweden	-672
TSU-DNA	Georgia	20
UniHb	Germany	1580
Total		49 144

19 SeaDataNet partners have input or deleted data in the CDI catalogue, for a total increase of 49 144 records, and 5 partners, not in the SeaDataNet consortium, have a increase of 2 593 CDIs.

Since the beginning of the follow-up reports (October 2012), the global increase in CDI, per partner, is the following: Note that for SMHI, TSU-DNA and SIO-RAS the negative global decrease is due to the change in their time series management (SMHI), the duplicates detection (TSU-DNA) or the change of data owner. Only one partner is inactive concerning the input of new data in the CDI catalogue.

CDI partner	Name of partner	Country	Nb 04/02/2015	Global increase
SIO-RAS	P.P.Shirshov Institute of Oceanology-RAS	Russian Federation	9 901	-28 922
SMHI	Swedish Meteorological and Hydrological Institute	Sweden	93 078	-16 449
TSU-DNA	Iv.Javakhishvili Tbilisi State University, Centre of Relations with UNESCO Oceanological Research Centre and GeoDNA (UNESCO)	Georgia	896	1
UOM	International Ocean Institute - Malta Operational Centre (University Of Malta) / Physical Oceanography Unit	Malta	628	0
IOPAN	IOPAN	Poland	18	18
IGEWE	IGEWE	Albania	21	21
IMBK	Institute of Marine Biology (IMBK)	Montenegro	51	29
IOF	Institute of Oceanography and Fisheries	Croatia	1 743	167
RSHU	RSHU	Russian Federation	206	206
IOLR	Israel Oceanographic and Limnological Research (IOLR)	Israel	5 399	326
VLIZ	Flanders Marine Institute	Belgium	1 967	348
EPA	Environmental Protection Agency (EPA)	Lithuania	818	405
CNR	CNR	Italy	484	484
ENEA	ENEA Centro Ricerche Ambiente Marino - La Spezia	Italy	8 805	731
INRH	Institut National de Recherche Halieutique	Morocco	536	536
IO-BAS	Bulgarian National Oceanographic Data Centre(BGODC)	Bulgaria	2 853	545
NIOZ	NIOZ Royal Netherlands Institute for Sea Research	Netherlands	5 516	887
MHI	Marine Hydrophysical Institute	Ukraine	96 035	687
MUMM	Management Unit of the North Sea and Scheldt estuary Mathematical Models	Belgium	12 306	773
INSTM	Institut National des Sciences et Technologies de la Mer	Tunisia	867	867
NIMRD	National Institute for Marine Research and Development Grigore Antipa	Romania	5 241	987
TUBITAK-SHODB	Turkiye Bilimsel ve Teknolojik Arastirma Kurumu	Turkey	1 182	1 182
LIAE	Latvian Institute of Aquatic Ecology	Latvia	2 264	1 957

OC-UCY	Cyprus Oceanography Center	Cyprus	3 546	1 991
MRI	Marine Research Institute (MRI)	Iceland	5 914	2 090
MI	Marine Institute	Ireland	7 660	2 959
HCMR	Hellenic Centre for Marine Research	Greece	15 494	3 470
IBSS	Institute of Biology of the Southern Seas	Ukraine	4 897	2 791
IHPT	IHPT, Hydrographic institute	Portugal	3 780	2 875
NIB	National Institute of Biology - NIBMarine Biology Station	Slovenia	7 291	3 171
IEO	IEO/Spanish Oceanographic Institute	Spain	35 591	4 176
UniHb	Universitaet Bremen	Germany	6 844	6 844
OGS	OGS (Istituto Nazionale di Oceanografia e di Geofisica Sperimentale)	Italy	99 513	9 915
ICES	ICES	Denmark	19 902	19 902
IMGW	Instytut Meteorologii i Gosodarki Wodnej	Poland	11 286	11 286
FMI	Finnish Meteorological Institute	Finland	13 500	11 289
MSI	Marine Systems Institute at Tallinn University of Technology	Estonia	26 045	13 048
RIHMI-WDC	All-Russia Research Institute of Hydrometeorological Information - World Data Centre (RIHMI-WDC) National Oceanographic Data Centre (NODC)	Russian Federation	119 329	62 204
BSH-DOD	German Oceanographic Datacentre (NODC)	Germany	38 111	20 833
METU-IMS	Institute of Marine Sciences, Middle East Technical University	Turkey	25 675	22 593
IFREMER	IFREMER / IDM/SISMER	France	244 826	38 627
NERC-BODC	British Oceanographic Data Centre	United Kingdom	86 988	38 931
NERI	Aarhus University	Denmark	223 349	59 195
IMR	Institute of Marine Research - Norwegian Marine Data Centre (NMD)	Norway	107 829	93 036
SHOM	SHOM (Service Hydrographique et Océanographique de la Marine)	France	164 968	158 545
TOTAL			1 523 153	555 557

Catalogue	Sept-12	Oct-12	Nov-12	Dec-12	Jan-13	Feb-13	Mar-13	Apr-13	May-13	Aug-13	Sep-13	Oct-13	Nov-13	Dec-13
EDMO	2 261	2 283	2 296	2 304	2 330	2 351	2 359	2 362	2 370	2 384	2 404	2 404	2 423	2 431
EDMED	3 834	3 834	3 834	3 834	3 834	3 834	3 882	3 885	3 885	3 889	3 901	3 901	3 925	3 944
EDMERP	2 617	2 637	2 667	2 674	2 683	2 684	2 685	2 686	2 690	2 698	2 710	2 710	2 772	2 772
EDIOS-PRG	350	350	350	350	353	353	353	353	354	356	358	359	359	359
CSR	41 330	41 481	41 832	42 256	43 423	43 539	43 782	44 153	43 479	43 687	43 713	43 765	44 094	44 236
CDI	1 088 322	1 097 399	1 241 010	1 267 669	1 274 982	1 291 491	1 302 629	1 311 827	1 317 191	1 350 455	1 356 245	1 360 236	1 386 446	1 496 950

Figure 1 - Global counts on all catalogues in 2012/2013

Jan-14	Feb-14	Mar-14	Apr-14	May-14	Jun-14	Jul-14	Aug-14	Sep-14	Oct-14	Nov-14	Dec-14	Jan-15
2 451	2 467	2 651	2 685	2 688	2 692	2 693	2 701	2 875	3 103	3 199	3 212	3 210
3 944	3 945	3 945	3 947	3 948	3 955	3 957	3 960	3 961	3 962	3 963	3 965	3 980
2 787	2 808	2 830	2 832	2 834	2 837	2 841	2 844	2 847	2 849	2 850	2 857	2 858
359	360	360	360	360	360	360	360	360	360	360	360	360
44 230	44 294	44 447	44 518	44 518	44 657	44 696	45 012	45 072	45 109	45 156	45 163	45 483
1 498 793	1 537 556	1 558 428	1 566 528	1 569 847	1 575 035	1 604 916	1 612 514	1 621 749	1 626 904	1 631 984	1 662 548	1 714 285

Figure 2 - Global counts on all catalogues in 2014/2015

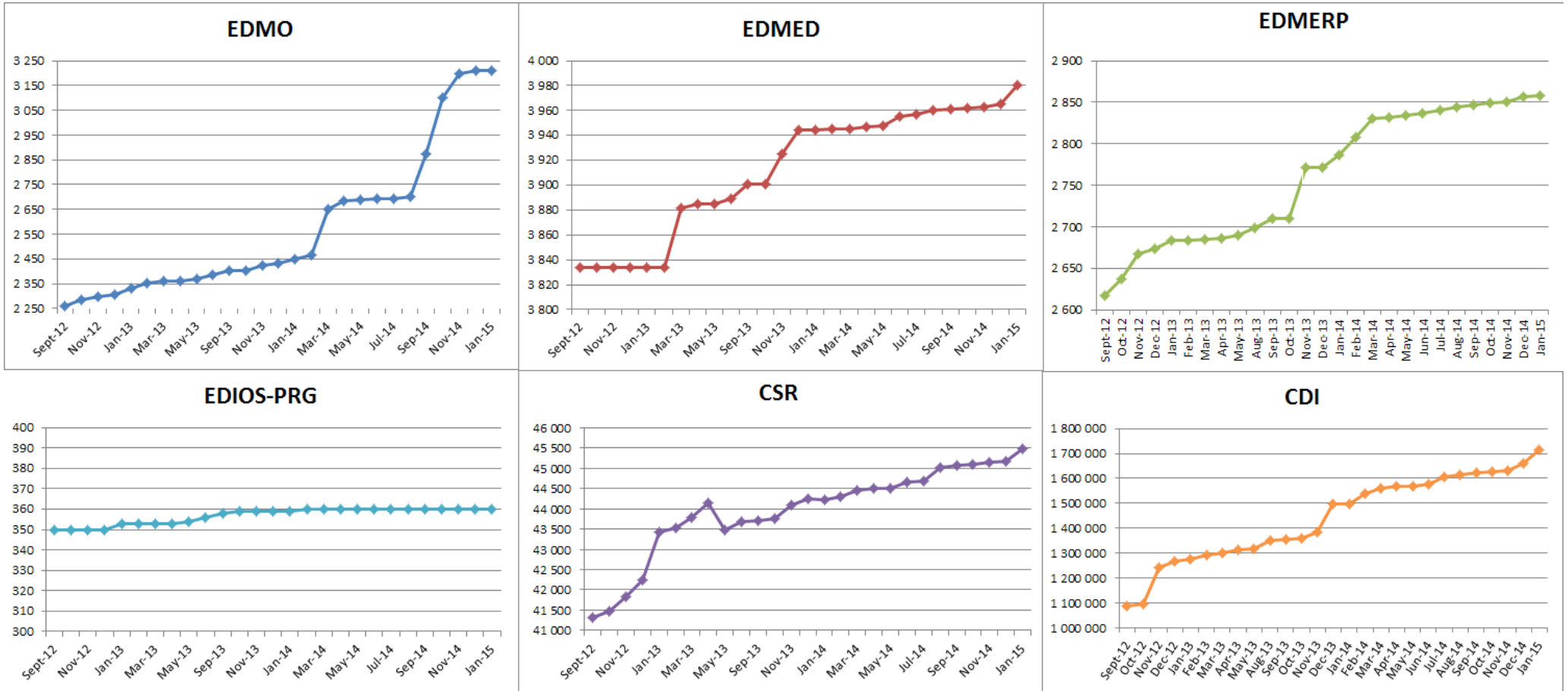
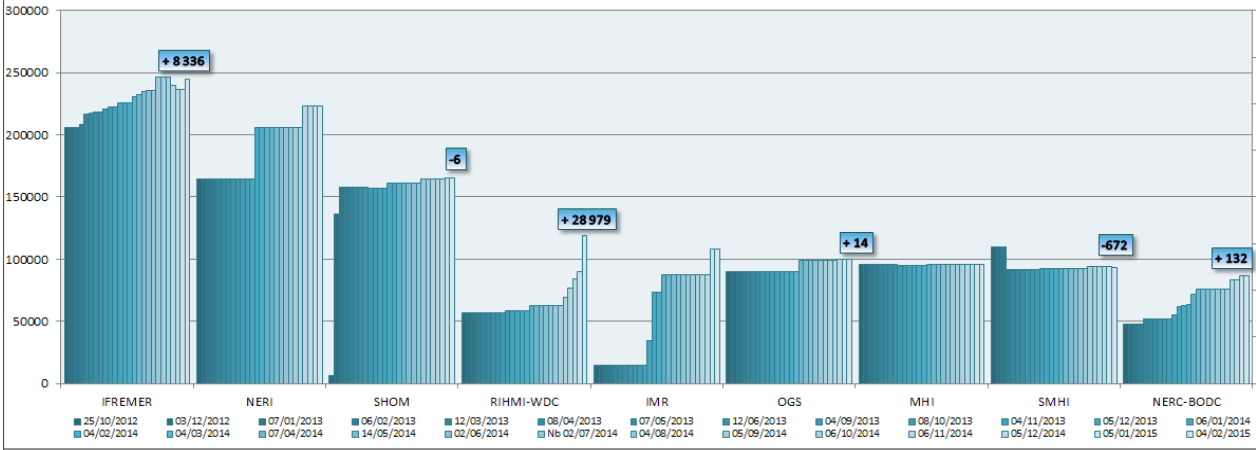
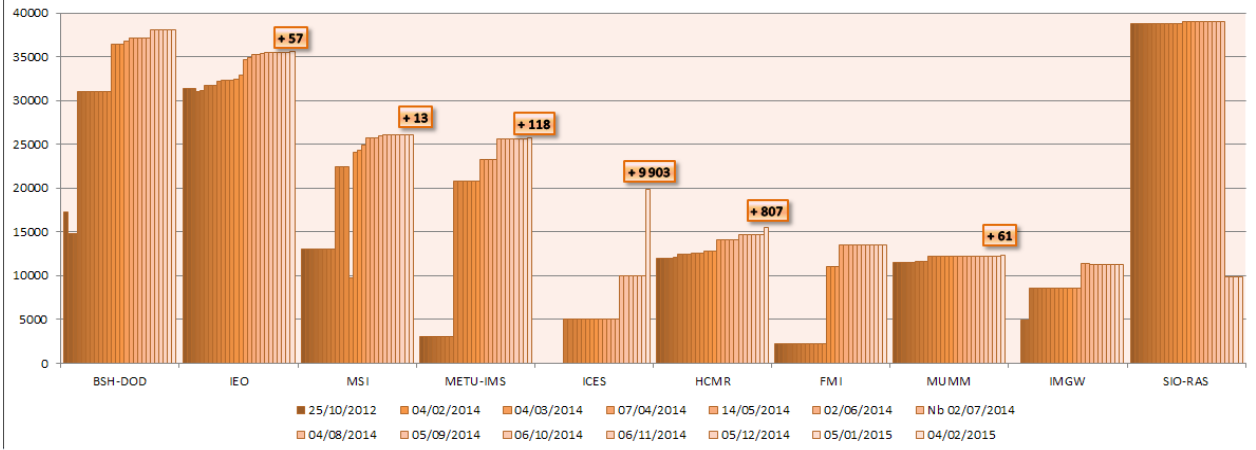


Figure 3 - Nb of EDMO, EDMED, EDMERP, EDIOS, CSR and CDI per month

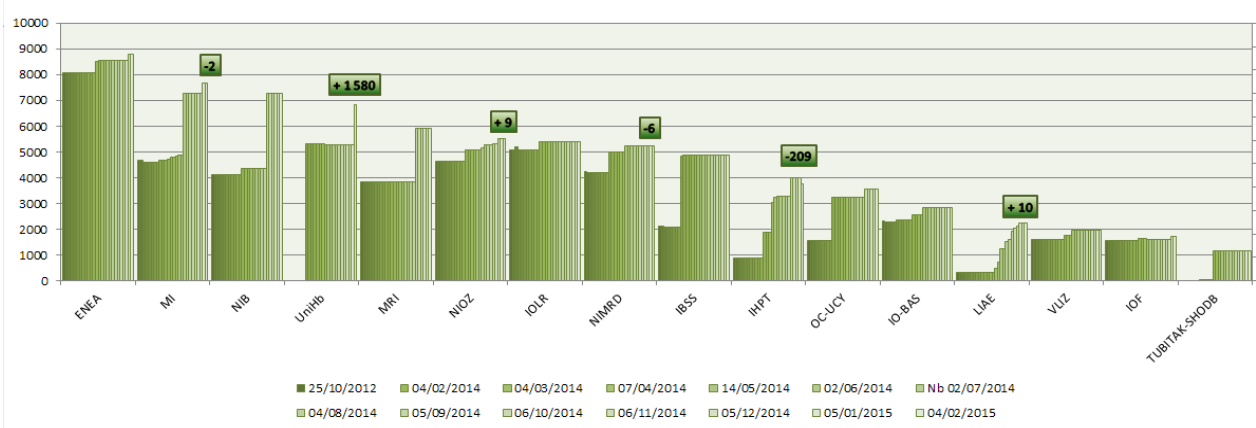
Partners with more than 50 000 CDIs



Partners with 10 000 < CDIs < 50 000



Partners with 1 000 < CDI entries < 10 000



Partners with less than 1 000 CDI entries

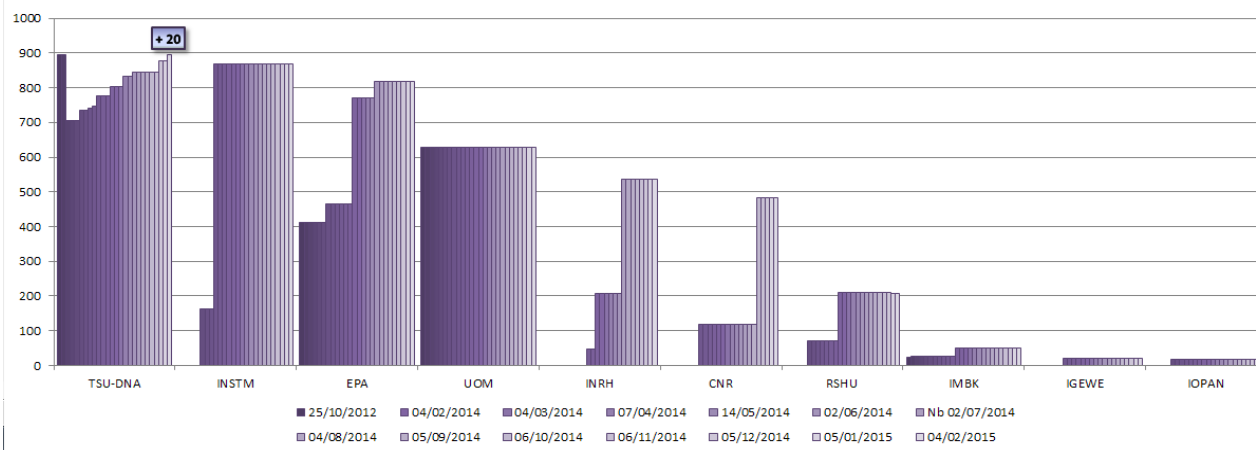


Figure 4 - Nb of CDIs per partner, data centres with new data input in January 2015