

## June 2015 – SeaDataNet catalogues follow-up

---

All documents used to write this report are available on the extranet of the project under [SeaDataNet II> Follow up](#).

In June 2015, global increases on catalogue **CDI** (+54 804), **CSR** (+63), **EDMO** (+ 110), **EDMERP** (+12), **EDMED** (+2) and no activities on **EDIOS-PRG** .

Details of last month upgrades per partners are the following:

CDI partner	Country	Last increase
<b>ICES</b>	Denmark	<b>2 696</b>
<b>IEO</b>	Spain	<b>278</b>
<b>IFREMER</b>	France	<b>33 306(*)</b>
<b>IHPT</b>	Portugal	<b>340</b>
<b>IMGW</b>	Poland	<b>2 588</b>
<b>LIAE</b>	Latvia	<b>24</b>
<b>MHI</b>	Ukraine	<b>4</b>
<b>NERC-BODC</b>	United Kingdom	<b>4 692</b>
<b>NERI</b>	Denmark	<b>-3</b>
<b>NIMRD</b>	Romania	<b>1 603</b>
<b>NIOZ</b>	Netherlands	<b>77</b>
<b>OC-UCY</b>	Cyprus	<b>34</b>
<b>SHOM</b>	France	<b>2 612</b>
<b>SIO-RAS</b>	Russian Federation	<b>58</b>
	<b>TOTAL</b>	<b>48 309</b>

- 14 SeaDataNet partners have input or deleted data in the CDI catalogue, for a total increase of + 48 309 records .

- For others partners, not in the SeaDataNet consortium, 12 have worked on data for a total of + 6 495 records.

(\*) The huge increase of CDIs records sent by from IFREMER (France) is linked to the 28000 CDIs for BSH Argo floats that are managed in Coriolis database located in IFREMER (originator BSH who gives the authorization for their publication by IFREMER).

The CSR automatic harvesting is done once a week in 4 data centres: IEO, IFREMER, HCMR and OGS.

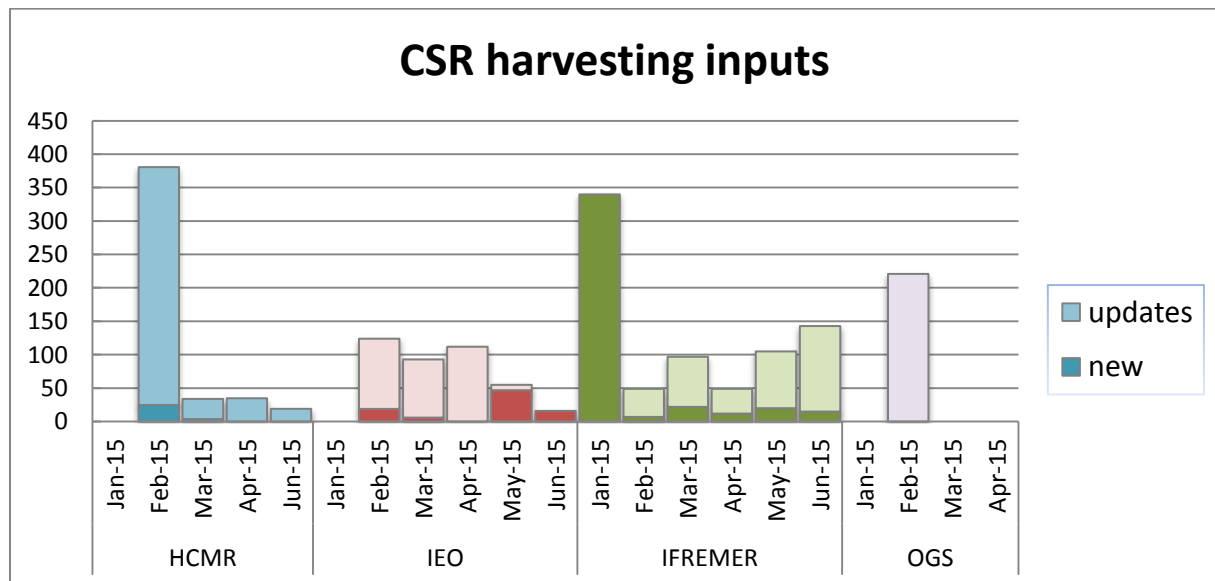
For June 2015, the result of this harvesting is 31 new records of CSR, and 147 updated records.

Details of harvesting per centre are the following:

Centre	Date	New	Updates
IFREMER	02/06/2015	1	5
IEO	02/06/2015	16	
IFREMER	09/06/2015	14	116
IFREMER	16/06/2015		7
HCMR	30/06/2015		19
<b>Total</b>		<b>31</b>	<b>147</b>

OGS had no CSR creations or updates during this month.

The graph below shows the CSR harvesting inputs since beginning of 2015 :



Since the beginning of the follow-up reports (October 2012), the global increase in CDI, per partner, is the following: Note that for SMHI, TSU-DNA and SIO-RAS the negative or low global increase is due to the change in their time series management (SMHI), the duplicates detection (TSU-DNA) or the change of data owner and the remove of incorrect records (SIO-RAS. The new owner is SOI, not in the SeaDataNet consortium).

CDI partner	Name of partner	Country	Nb 06/07/2015	Global increase
<b>SIO-RAS</b>	P.P.Shirshov Institute of Oceanology-RAS	Russian Federation	9 959	<b>-28 864</b>
<b>SMHI</b>	Swedish Meteorological and Hydrological Institute	Sweden	94 286	<b>-15 241</b>
<b>UOM</b>	International Ocean Institute - Malta Operational Centre (University Of Malta) / Physical Oceanography Unit	Malta	632	<b>4</b>
<b>TSU-DNA</b>	Iv.Javakishvili Tbilisi State University, Centre of Relations with UNESCO Oceanological Research Centre and GeoDNA	Georgia	908	<b>13</b>
<b>IOPAN</b>	IOPAN	Poland	18	<b>18</b>
<b>IMBK</b>	Institute of Marine Biology (IMBK)	Montenegro	51	<b>29</b>
<b>IOF</b>	Institute of Oceanography and Fisheries	Croatia	1 743	<b>167</b>
<b>RSHU</b>	RSHU	Russian Federation	206	<b>206</b>
<b>IOLR</b>	Israel Oceanographic and Limnological Research (IOLR)	Israel	5 399	<b>326</b>
<b>VLIZ</b>	Flanders Marine Institute	Belgium	1 967	<b>348</b>
<b>CNR</b>	CNR	Italy	484	<b>484</b>
<b>INRH</b>	Institut National de Recherche Halieutique	Morocco	536	<b>536</b>
<b>EPA</b>	Environmental Protection Agency (EPA)	Lithuania	962	<b>549</b>
<b>MHI</b>	Marine Hydrophysical Institute	Ukraine	96 031	<b>683</b>
<b>ENEA</b>	ENEA Centro Ricerche Ambiente Marino - La Spezia	Italy	8 805	<b>731</b>
<b>MUMM</b>	Management Unit of the North Sea and Scheldt estuary Mathematical Models	Belgium	12 329	<b>796</b>
<b>IO-BAS</b>	Bulgarian National Oceanographic Data Centre(BGODC)	Bulgaria	3 206	<b>898</b>
<b>INSTM</b>	Institut National des Sciences et Technologies de la Mer	Tunisia	969	<b>969</b>
<b>TUBITAK-SHODB</b>	Turkiye Bilimsel ve Teknolojik Arastirma Kurumu	Turkey	1 180	<b>1 180</b>
<b>NIOZ</b>	NIOZ Royal Netherlands Institute for Sea Research	Netherlands	6 083	<b>1 454</b>
<b>OC-UCY</b>	Cyprus Oceanography Center	Cyprus	3 580	<b>2 025</b>
<b>NIMRD</b>	National Institute for Marine Research and Development Grigore Antipa	Romania	6 288	<b>2 034</b>
<b>MRI</b>	Marine Research Institute (MRI)	Iceland	5 914	<b>2 090</b>
<b>LIAE</b>	Latvian Institute of Aquatic Ecology	Latvia	2 685	<b>2 378</b>
<b>IBSS</b>	Institute of Biology of the Southern Seas	Ukraine	4 897	<b>2 791</b>
<b>MI</b>	Marine Institute	Ireland	7 680	<b>2 979</b>
<b>NIB</b>	National Institute of Biology - NIBMarine Biology Station	Slovenia	7 375	<b>3 255</b>
<b>IHPT</b>	IHPT, Hydrographic institute	Portugal	4 452	<b>3 547</b>

<b>HCMR</b>	Hellenic Centre for Marine Research	Greece	15 652	<b>3 628</b>
<b>IEO</b>	IEO/Spanish Oceanographic Institute	Spain	36 059	<b>4 644</b>
<b>UniHb</b>	Universitaet Bremen	Germany	6 844	<b>6 844</b>
<b>OGS</b>	OGS (Istituto Nazionale di Oceanografia e di Geofisica Sperimentale)	Italy	99 525	<b>9 927</b>
<b>FMI</b>	Finnish Meteorological Institute	Finland	13 500	<b>11 289</b>
<b>IMGW</b>	Instytut Meteorologii i Gosodarki Wodnej	Poland	11 340	<b>11 340</b>
<b>MSI</b>	Marine Systems Institute at Tallinn University of Technology	Estonia	26 072	<b>13 075</b>
<b>BSH-DOD</b>	German Oceanographic Datacentre (NODC)	Germany	38 389	<b>21 111</b>
<b>ICES</b>	ICES	Denmark	22 709	<b>22 709</b>
<b>METU-IMS</b>	Institute of Marine Sciences, Middle East Technical University	Turkey	25 795	<b>22 713</b>
<b>NERC-BODC</b>	British Oceanographic Data Centre	United Kingdom	99 187	<b>51 130</b>
<b>NERI</b>	Aarhus University	Denmark	223 346	<b>59 192</b>
<b>RIHMI-WDC</b>	All-Russia Research Institute of Hydrometeorological Information - World Data Centre (RIHMI-WDC) (NODC)	Russian Federation	119 329	<b>62 204</b>
<b>IFREMER</b>	IFREMER / IDM/SISMER	France	281 663	<b>75 464</b>
<b>IMR</b>	Institute of Marine Research - Norwegian Marine Data Centre (NMD)	Norway	107 829	<b>93 036</b>
<b>SHOM</b>	SHOM (Service Hydrographique et Océanographique de la Marine)	France	167 580	<b>161 157</b>
		<b>TOTAL</b>	<b>1 583 444</b>	<b>615 848</b>

Catalogue	Sept-12	Oct-12	Nov-12	Dec-12	Jan-13	Feb-13	Mar-13	Apr-13	May-13	Aug-13	Sep-13	Oct-13	Nov-13	Dec-13
EDMO	2 261	2 283	2 296	2 304	2 330	2 351	2 359	2 362	2 370	2 384	2 404	2 404	2 423	2 431
EDMED	3 834	3 834	3 834	3 834	3 834	3 834	3 882	3 885	3 885	3 889	3 901	3 901	3 925	3 944
EDMERP	2 617	2 637	2 667	2 674	2 683	2 684	2 685	2 686	2 690	2 698	2 710	2 710	2 772	2 772
EDIOS-PRG	350	350	350	350	353	353	353	353	354	356	358	359	359	359
CSR	41 330	41 481	41 832	42 256	43 423	43 539	43 782	44 153	43 479	43 687	43 713	43 765	44 094	44 236
CDI	1 088 322	1 097 399	1 241 010	1 267 669	1 274 982	1 291 491	1 302 629	1 311 827	1 317 191	1 350 455	1 356 245	1 360 236	1 386 446	1 496 950

Figure 1.a - Global counts on all catalogues in 2012/2013

Catalogue	Jan-14	Feb-14	Mar-14	Apr-14	May-14	Jun-14	Jul-14	Aug-14	Sep-14	Oct-14	Nov-14	Dec-14
EDMO	2 451	2 467	2 651	2 685	2 688	2 692	2 693	2 701	2 875	3 103	3 199	3 212
EDMED	3 944	3 945	3 945	3 947	3 948	3 955	3 957	3 960	3 961	3 962	3 963	3 965
EDMERP	2 787	2 808	2 830	2 832	2 834	2 837	2 841	2 844	2 847	2 849	2 850	2 857
EDIOS-PRG	359	360	360	360	360	360	360	360	360	360	360	360
CSR	44 230	44 294	44 447	44 518	44 518	44 657	44 696	45 012	45 072	45 109	45 156	45 163
CDI	1 498 793	1 537 556	1 558 428	1 566 528	1 569 847	1 575 035	1 604 916	1 612 514	1 621 749	1 626 904	1 631 984	1 662 548

Figure 1.b - Global counts on all catalogues in 2014

Catalogue	Jan-15	Feb-15	Mar-15	Apr-15	May-15	Jun-15
EDMO	3 210	3 223	3 275	3 324	3 422	<b>3 532</b>
EDMED	3 980	3 982	3 984	3 984	3 990	<b>3 992</b>
EDMERP	2 858	2 866	2 878	2 878	2 886	<b>2 898</b>
EDIOS-PRG	360	360	361	361	361	<b>361</b>
CSR	45 483	45 534	45 744	45 810	45 906	<b>45 969</b>
CDI	1 714 285	1 721 708	1 721 604	1 720 724	1 709 958	<b>1 764 762</b>

Figure 1.c - Global counts on all catalogues in 2015

Figure 2 - Global counts on all catalogues in 2014/2015

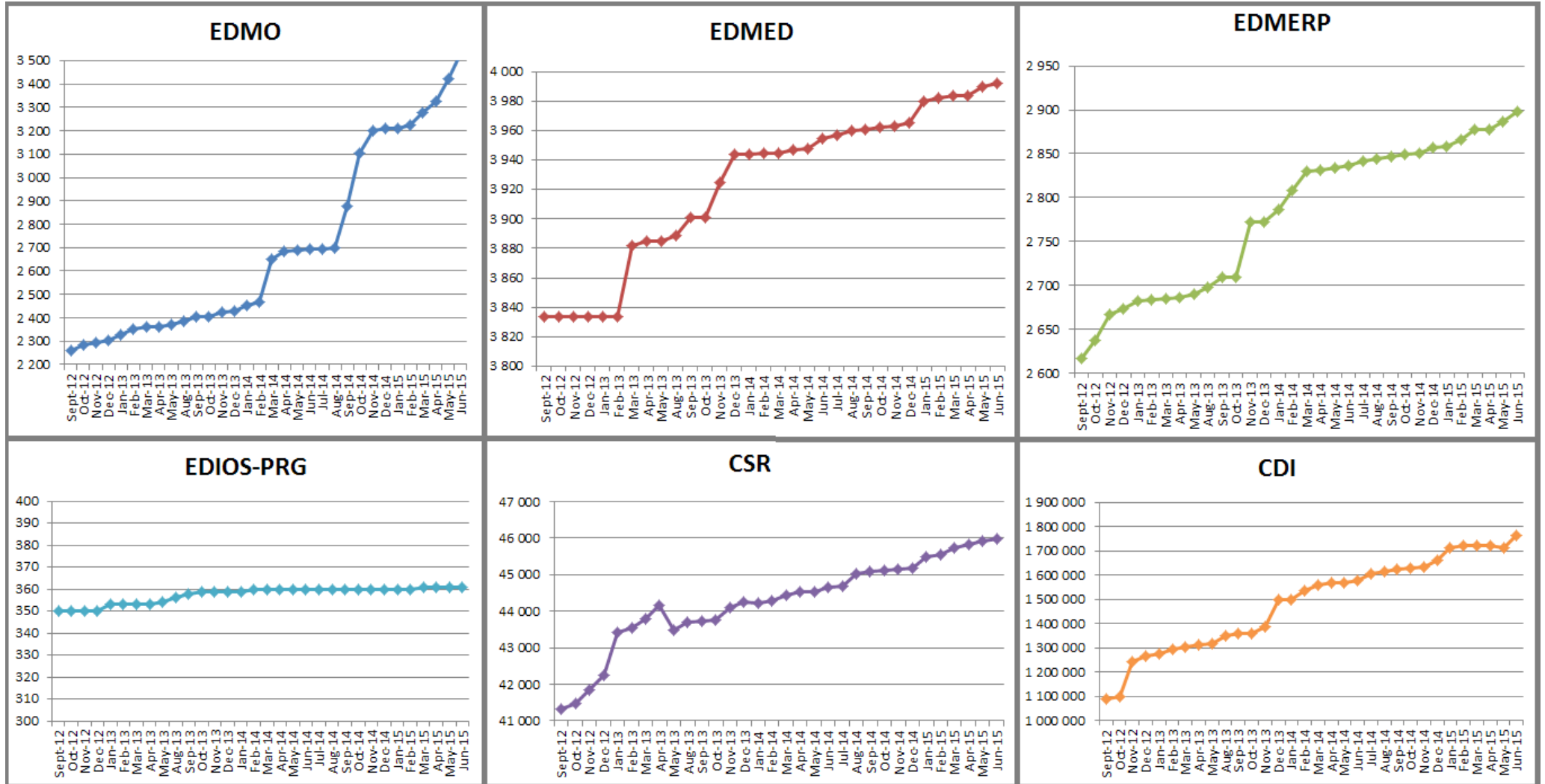


Figure 3 - Nb of EDMO, EDMED, EDMERP, EDIOS, CSR and CDI per month

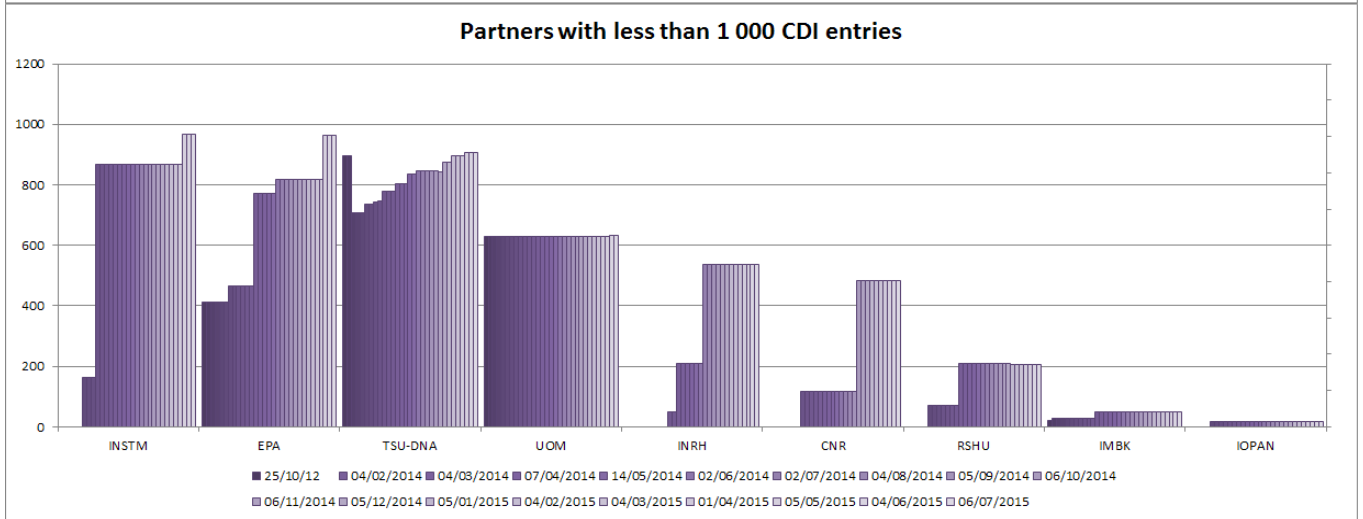
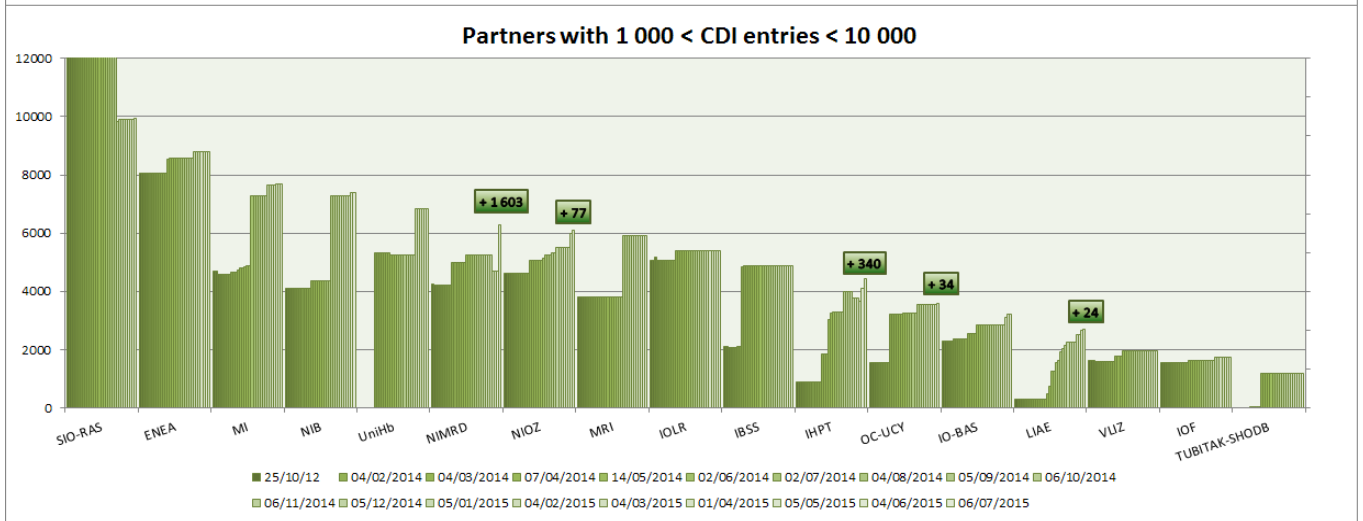
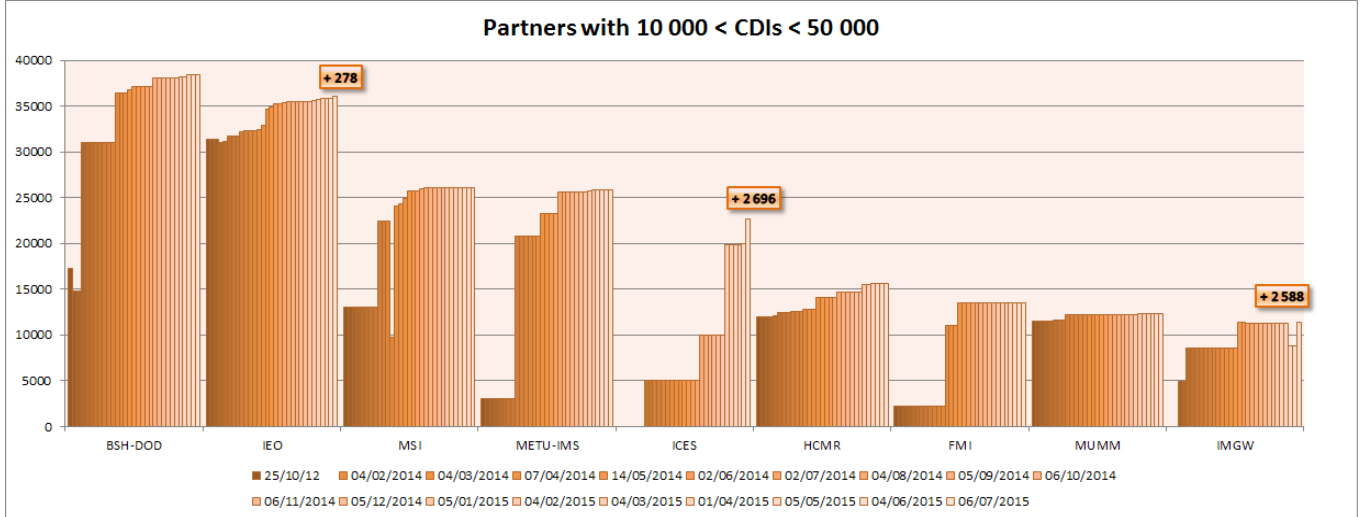
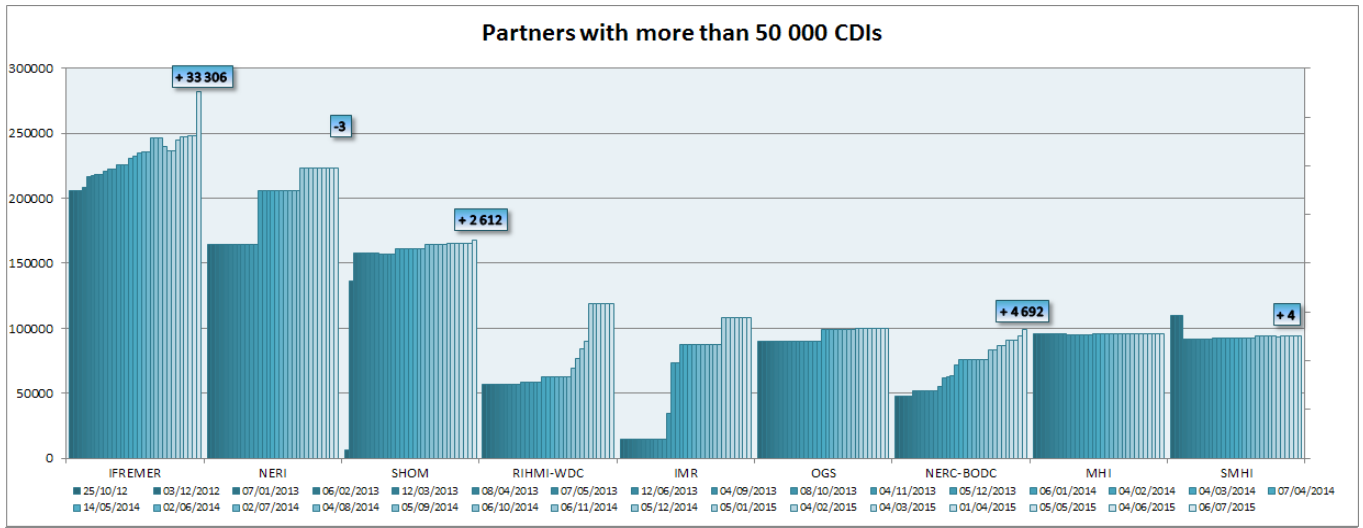


Figure 4 - Nb of CDIs per partner, data centres with new data input in June 2015