

September 2015 – SeaDataNet catalogues follow-up

All documents used to write this report are available on the extranet of the project under [SeaDataNet II> Follow up](#).

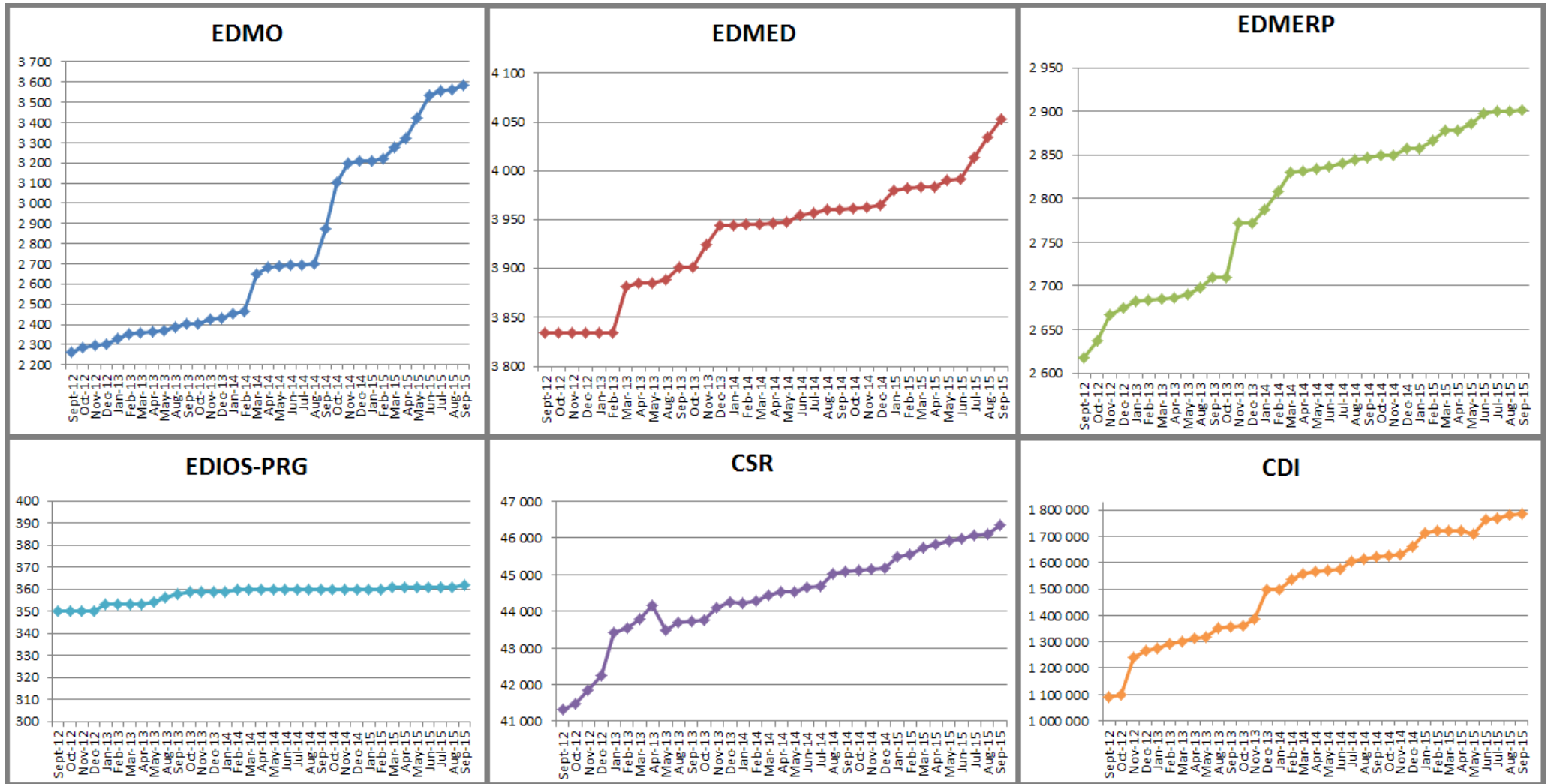
Statistics on all catalogues

In September 2015, global increases on catalogue **CDI (+5 128)**, **CSR (+234)**, **EDMO (+19)**, **EDMED (+19)**, **EDIOS-PRG (+1)** and **EDMERP (+1)**.

Global counts on all catalogues in 2015

Catalogue	Jan-15	Feb-15	Mar-15	Apr-15	May-15	Jun-15	Jul-15	Aug-15	Sep-15	Evolution
EDMO	3 210	3 223	3 275	3 324	3 422	3 532	3 556	3 564	3 583	19
EDMED	3 980	3 982	3 984	3 984	3 990	3 992	4 014	4 034	4 053	19
EDMERP	2 858	2 866	2 878	2 878	2 886	2 898	2 900	2 900	2 901	1
EDIOS-PRG	360	360	361	361	361	361	361	361	362	1
CSR	45 483	45 534	45 744	45 810	45 906	45 969	46 059	46 108	46 342	234
CDI	1 714 285	1 721 708	1 721 604	1 720 724	1 709 958	1 764 762	1 764 762	1 779 199	1 784 327	5 128

Nb of EDMO, EDMED, EDMERP, EDIOS, CSR and CDI per month



Statistics on CDI catalogue

Details of last month upgrades per partners are the following:

CDI partner	Country	Last increase
HCMR	Greece	77
ICES	Denmark	1 093
IEO	Spain	32
IFREMER	France	1 693
IHPT	Portugal	25
INRH	Morocco	490
MHI	Ukraine	75
MSI	Estonia	254
OGS	Italy	113
TSU-DNA	Georgia	10
VLIZ	Belgium	715
TOTAL		4 577

- 11 SeaDataNet partners have input or deleted data in the CDI catalogue, for a total increase of + 4 577 records .

- For others partners, not in the SeaDataNet consortium, 4 have worked on data for a total of + 551 records.

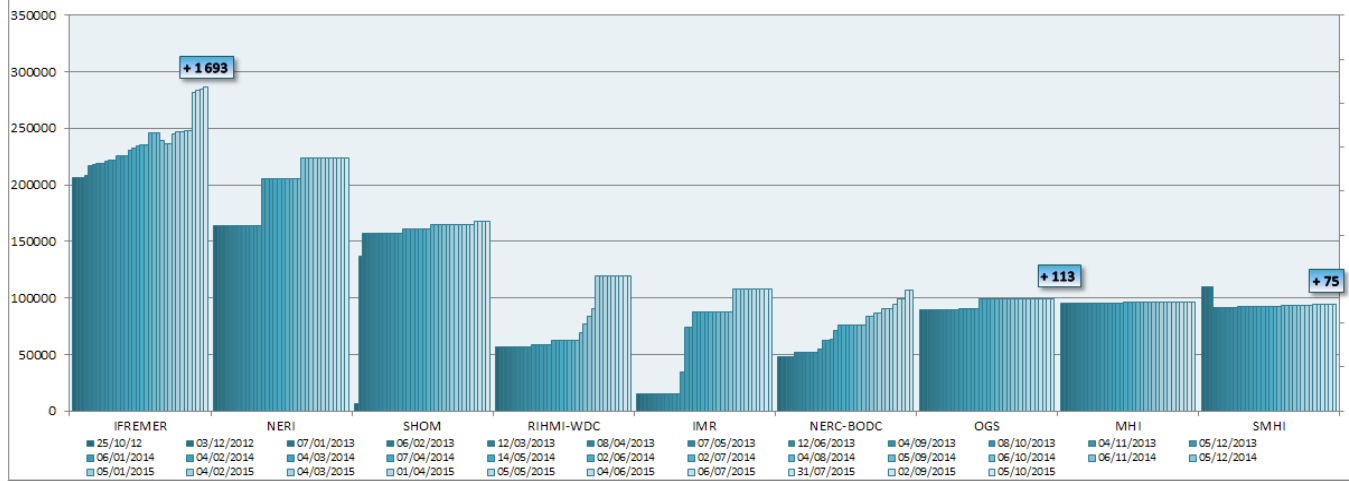
Since the beginning of the follow-up reports (October 2012), the global increase in CDI, per partner, is the following: Note that for SMHI, TSU-DNA and SIO-RAS the negative or low global increase is due to the change in their time series management (SMHI), the duplicates detection (TSU-DNA) or the change of data owner and the remove of incorrect records (SIO-RAS. The new owner is SOI, not in the SeaDataNet consortium).

CDI partner	Name of partner	Country	Nb 05/10/2015	Global increase
SIO-RAS	P.P.Shirshov Institute of Oceanology-RAS	Russian Federation	9 959	-28 864
SMHI	Swedish Meteorological and Hydrological Institute	Sweden	94 286	-15 241
UOM	International Ocean Institute - Malta Operational Centre (University Of Malta) / Physical Oceanography Unit	Malta	632	4
IOPAN	IOPAN	Poland	18	18
TSU-DNA	Iv.Javakhishvili Tbilisi State University, Centre of Relations with UNESCO Oceanological Research Centre and GeoDNA	Georgia	918	23
IMBK	Institute of Marine Biology (IMBK)	Montenegro	59	37
IOF	Institute of Oceanography and Fisheries	Croatia	1 743	167
RSHU	RSHU	Russian Federation	206	206
IOLR	Israel Oceanographic and Limnological Research (IOLR)	Israel	5 399	326
CNR	CNR	Italy	484	484
EPA	Environmental Protection Agency (EPA)	Lithuania	962	549
ENEA	ENEA Centro Ricerche Ambiente Marino - La Spezia	Italy	8 805	731
MHI	Marine Hydrophysical Institute	Ukraine	96 106	758
MUMM	Management Unit of the North Sea and Scheldt estuary Mathematical Models	Belgium	12 329	796
IO-BAS	Bulgarian National Oceanographic Data Centre(BGODC)	Bulgaria	3 206	898
INSTM	Institut National des Sciences et Technologies de la Mer	Tunisia	969	969
INRH	Institut National de Recherche Halieutique	Morocco	1 026	1 026
TUBITAK-SHODB	Turkiye Bilimsel ve Teknolojik Arastirma Kurumu	Turkey	1 180	1 180
NIOZ	NIOZ Royal Netherlands Institute for Sea Research	Netherlands	6 084	1 455
VLIZ	Flanders Marine Institute	Belgium	3 498	1 879
OC-UCY	Cyprus Oceanography Center	Cyprus	3 501	1 946
NIMRD	National Institute for Marine Research and Development Grigore Antipa	Romania	6 288	2 034
MRI	Marine Research Institute (MRI)	Iceland	5 914	2 090
LIAE	Latvian Institute of Aquatic Ecology	Latvia	2 948	2 641
IBSS	Institute of Biology of the Southern Seas	Ukraine	4 897	2 791
NIB	National Institute of Biology - NIBMarine Biology Station	Slovenia	7 375	3 255
MI	Marine Institute	Ireland	8 249	3 548
HCMR	Hellenic Centre for Marine Research	Greece	15 729	3 705

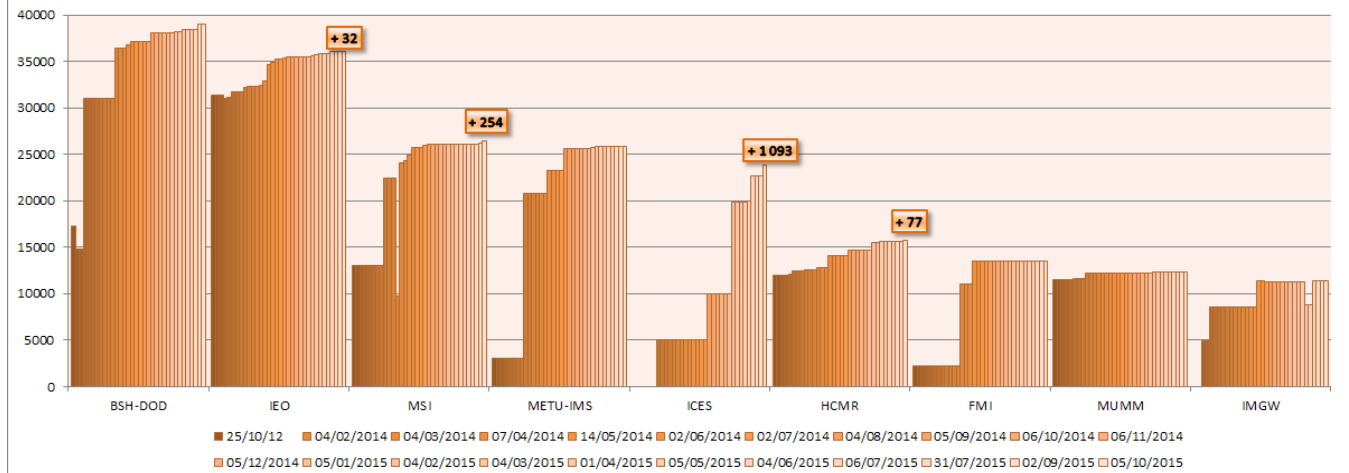
IHPT	IHPT, Hydrographic institute	Portugal	4 620	3 715
IEO	IEO/Spanish Oceanographic Institute	Spain	36 091	4 676
UniHb	Universitaet Bremen	Germany	6 844	6 844
OGS	OGS (Istituto Nazionale di Oceanografia e di Geofisica Sperimentale)	Italy	99 625	10 027
FMI	Finnish Meteorological Institute	Finland	13 500	11 289
IMGW	Instytut Meteorologii i Gosodarki Wodnej	Poland	11 340	11 340
MSI	Marine Systems Institute at Tallinn University of Technology	Estonia	26 477	13 480
BSH-DOD	German Oceanographic Datacentre (NODC)	Germany	38 982	21 704
METU-IMS	Institute of Marine Sciences, Middle East Technical University	Turkey	25 795	22 713
ICES	ICES	Denmark	23 802	23 802
NERC-BODC	British Oceanographic Data Centre	United Kingdom	107 030	58 973
NERI	Aarhus University	Denmark	223 346	59 192
RIHMI-WDC	All-Russia Research Institute of Hydrometeorological Information - World Data Centre (RIHMI-WDC) (NODC)	Russian Federation	119 329	62 204
IFREMER	IFREMER / IDM/SISMER	France	286 517	80 318
IMR	Institute of Marine Research - Norwegian Marine Data Centre (NMD)	Norway	107 829	93 036
SHOM	SHOM (Service Hydrographique et Océanographique de la Marine)	France	167 580	161 157
		TOTAL	1 601 477	633 881

Nb of CDIs per partner, data centres with new data input in Septembre 2015

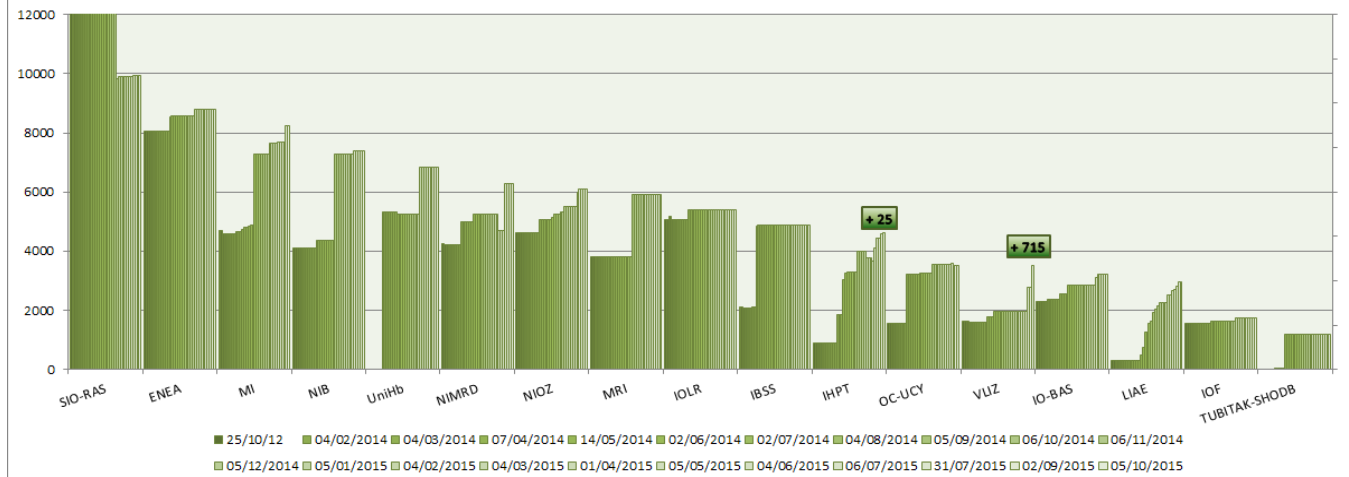
Partners with more than 50 000 CDIs



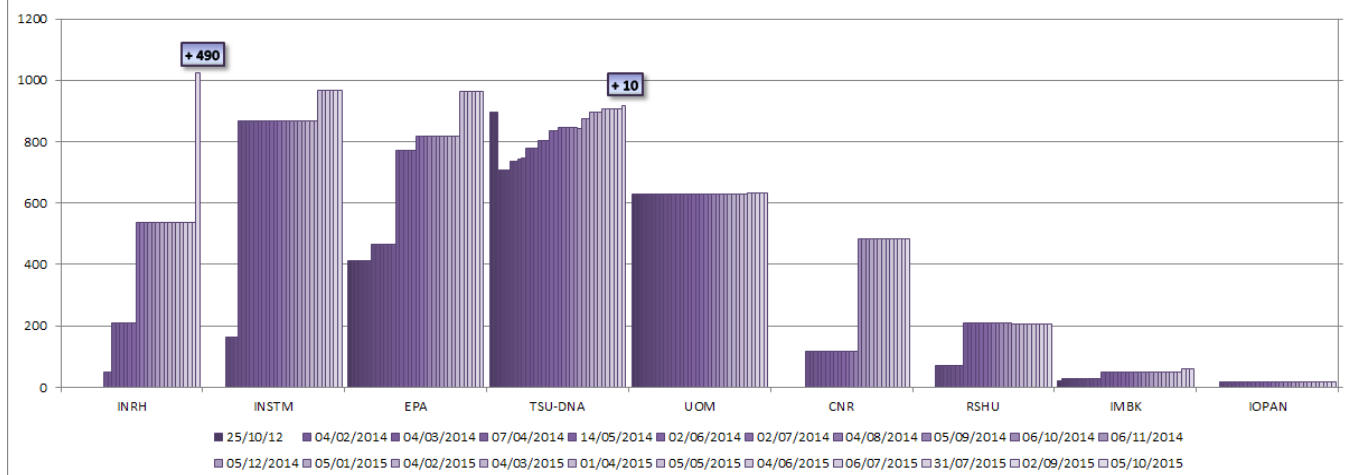
Partners with 10 000 < CDIs < 50 000



Partners with 1 000 < CDI entries < 10 000



Partners with less than 1 000 CDI entries



Statistics on CSR harvesting

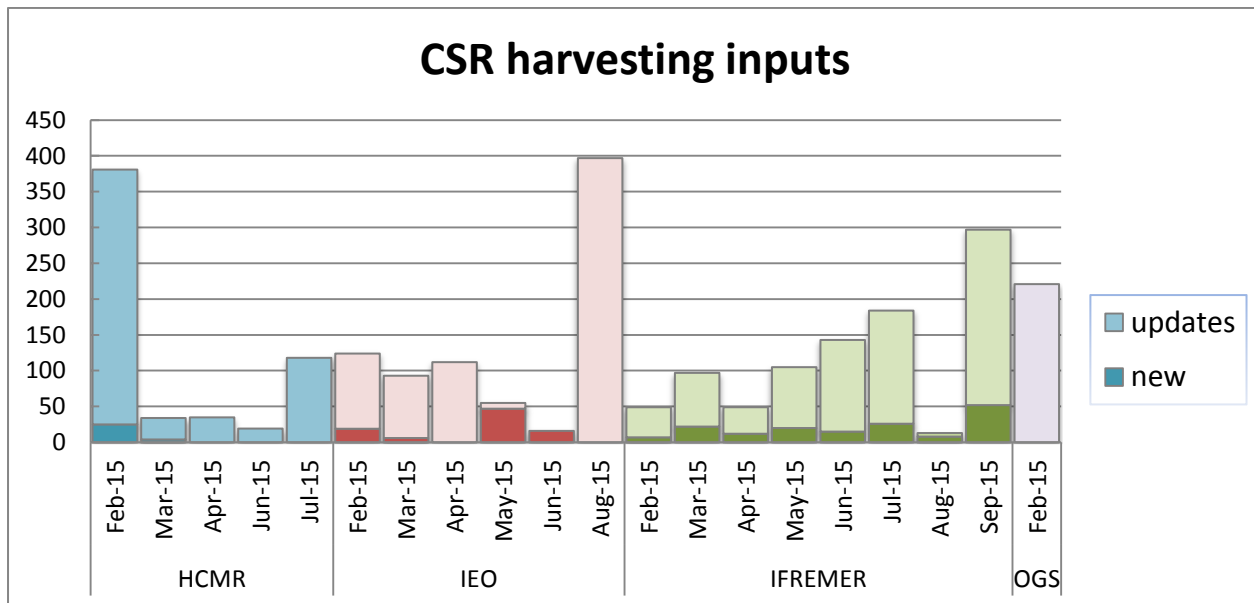
The CSR automatic harvesting result for this month is 52 new and 245 updated records.

Details of harvesting per centre are the following:

Centre	Date	New	Updates
IFREMER	02/09/2015		1
IFREMER	09/09/2015	45	100
IFREMER	15/09/2015	7	118
IFREMER	22/09/2015		26
Total		52	245

HCMR and OGS had no CSR creations or updates during this month.

The graph below shows the CSR harvesting inputs since beginning of 2015:



History

Global counts on all catalogues in 2014

Catalogue	Jan-14	Feb-14	Mar-14	Apr-14	May-14	Jun-14	Jul-14	Aug-14	Sep-14	Oct-14	Nov-14	Dec-14
EDMO	2 451	2 467	2 651	2 685	2 688	2 692	2 693	2 701	2 875	3 103	3 199	3 212
EDMED	3 944	3 945	3 945	3 947	3 948	3 955	3 957	3 960	3 961	3 962	3 963	3 965
EDMERP	2 787	2 808	2 830	2 832	2 834	2 837	2 841	2 844	2 847	2 849	2 850	2 857
EDIOS-PRG	359	360	360	360	360	360	360	360	360	360	360	360
CSR	44 230	44 294	44 447	44 518	44 518	44 657	44 696	45 012	45 072	45 109	45 156	45 163
CDI	1 498 793	1 537 556	1 558 428	1 566 528	1 569 847	1 575 035	1 604 916	1 612 514	1 621 749	1 626 904	1 631 984	1 662 548

Global counts on all catalogues in 2012/2013

Catalogue	Sept-12	Oct-12	Nov-12	Dec-12	Jan-13	Feb-13	Mar-13	Apr-13	May-13	Aug-13	Sep-13	Oct-13	Nov-13	Dec-13
EDMO	2 261	2 283	2 296	2 304	2 330	2 351	2 359	2 362	2 370	2 384	2 404	2 404	2 423	2 431
EDMED	3 834	3 834	3 834	3 834	3 834	3 834	3 882	3 885	3 885	3 889	3 901	3 901	3 925	3 944
EDMERP	2 617	2 637	2 667	2 674	2 683	2 684	2 685	2 686	2 690	2 698	2 710	2 710	2 772	2 772
EDIOS-PRG	350	350	350	350	353	353	353	353	354	356	358	359	359	359
CSR	41 330	41 481	41 832	42 256	43 423	43 539	43 782	44 153	43 479	43 687	43 713	43 765	44 094	44 236
CDI	1 088 322	1 097 399	1 241 010	1 267 669	1 274 982	1 291 491	1 302 629	1 311 827	1 317 191	1 350 455	1 356 245	1 360 236	1 386 446	1 496 950